

PURPOSE - I. To prepare a pool of Y-SK virus from infected Cynomolgus monkey tissues.

II - To observe effect of intra-cerebral inoculation of Y-SK virus on the temperature curve & on the course of paralysis in Cynomolgus monkeys.

VIRUS - Y-SK mouse pool II 11/24/50. 1090 blend in saline. 0.5cc of uncentrifuged 1090 blend into right thalamic area. Inoculated 3/8/51 - Pm - First ten feathers taken immediately prior to inoculation.

MONKEYS - 15 Cynomolgus monkeys received 3/1/51 in a shipment of poor animals

<u>CYNOMOLGUS</u>	<u>DESCRIPTION</u>	<u>P.A.R.</u>	<u>DEAD (DISCARDED)</u>
# 1865	medium, poor condition		D ₂
# 1866	medium, poor condition		D ₃
# 1867*	large, fairly good condition	P ₃ *	RL, RU, Fever slight 3
# 1868*	large, fairly good condition	P ₆ *	Part RU, LU, weak lowers
# 1869*	" " " "	P ₃ *	Part. all ext. + back, prostr
# 1870*	medium, fairly good condition	P ₆ *	" " " " " Fev 4
# 1871*	large, fairly good condition	P ₃ *	" " " " " Fev 3
# 1872*	medium, fair condition	P ₄ *	Part RU + LU
# 1881*	medium, fair condition	P ₃ *	<u>Right facial</u> , part. RU
# 1883*	large, fair condition	P ₆ *	RU + LU
# 1884*	large, fair condition	P ₇ *	Part. RL + LL
# 1885*	Small, fairly good condition	P ₇ *	Part. RL, LL, LU
# 1886	Small, poor condition		D ₂
# 1887	Small, poor condition		D ₂
# 1888	Small, fair condition		D ₃

* - Spinal cord + medulla removed for pool.

Preparation of Y-SK Monkey Pool I

MAR 16 1951

Cords + medullas of 10 cynomolgus monkeys weighed + thawed. Material (weighed 58.0 grams) was placed in chilled Waring blender cup + blended = 532 cc of chilled, sterile saline for 5 minutes at high speed. 1090 bleed was distributed in 10 cc amounts to rubber stoppered glass ampoules. 54 ampoules frozen.

BAP-00

MAR 17 1951

1 ampoule containing @ 4cc thawed + 1090 Y-SK virus blend was spun at 2000 RPM for 10 min. 2000 SN diluted in saline + filtered 10^{-1} - 10^{-5} in 13 - 20 gram moffield albinos mice.

4/19/51

All ampoules thawed + contents mixed = pool of 13 monkeys 4/19/51. 5 big mixtures distributed in 10 cc amounts (115 ampoules), labeled Monkey pool I 3/16 + 4/19/51, + frozen in large CO₂ box.

NOV 3 0 1951

- 22 ampoules used for feeding experiment

1150 cc
660

Y-SK
MONKEY
POOL I

CYN. 1865

Y-SK - I.cen

MAR 8 1951

107

106

105

104

103

102

101

100

99

98

97

96

95

↑

VIRUS

94

0 1 2 3 4 5 6 7 8 9 10 11 12 13 14

MAR. 8 9 10 11 12 13 14 15 16 17 18 19 20 21 22

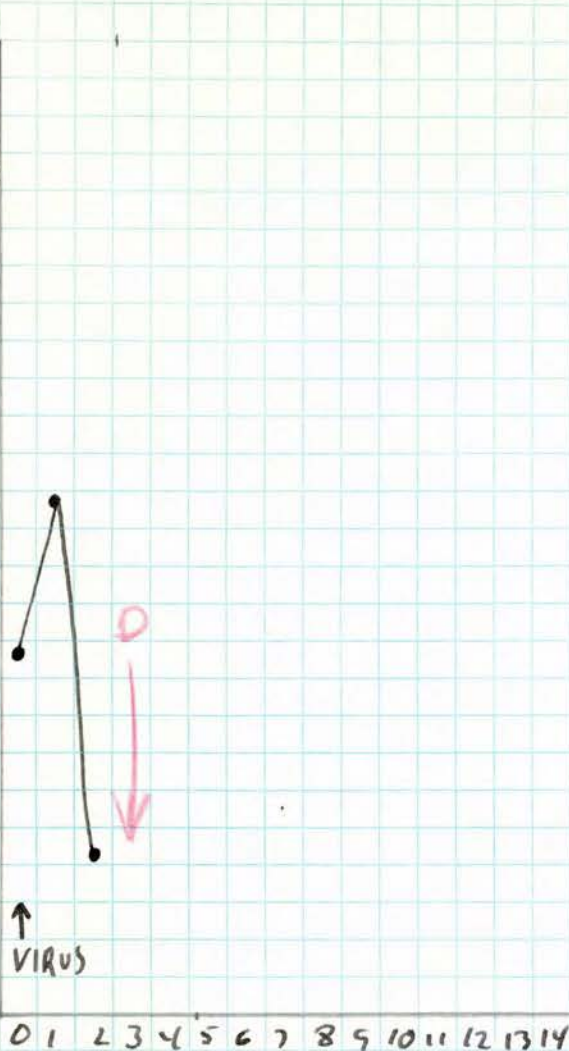
3/10/51 - Am - Dead, dis corded

CYH. 1866

Y-SK Ice.

MAR 8 1951

107
106
105
104
103
102
101
100
99
98
97
96
95
94



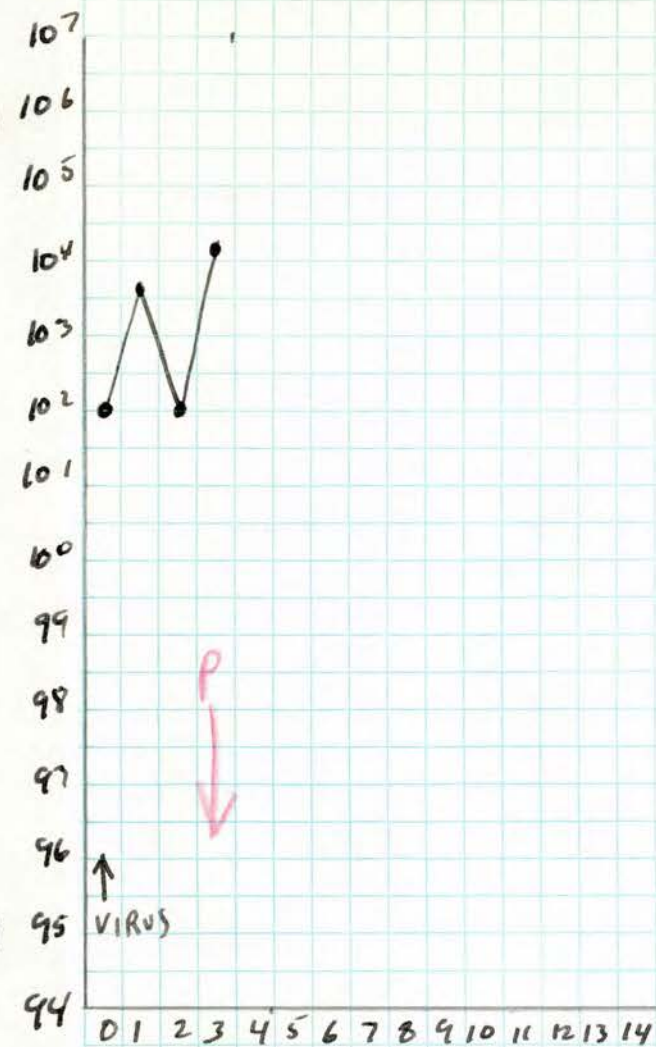
0 1 2 3 4 5 6 7 8 9 10 11 12 13 14

MAR 8 9 10 11 12 13 14 15 16 17 18 19 20 21 22

CYN 1867

YK-Ice

MAR 8 1951



MAR 8 9 10 11 12 13 14 15 16 17 18 19 20 21 22

3/11/51 - Extensive paralysis of right lower; Partial paralysis of right upper.

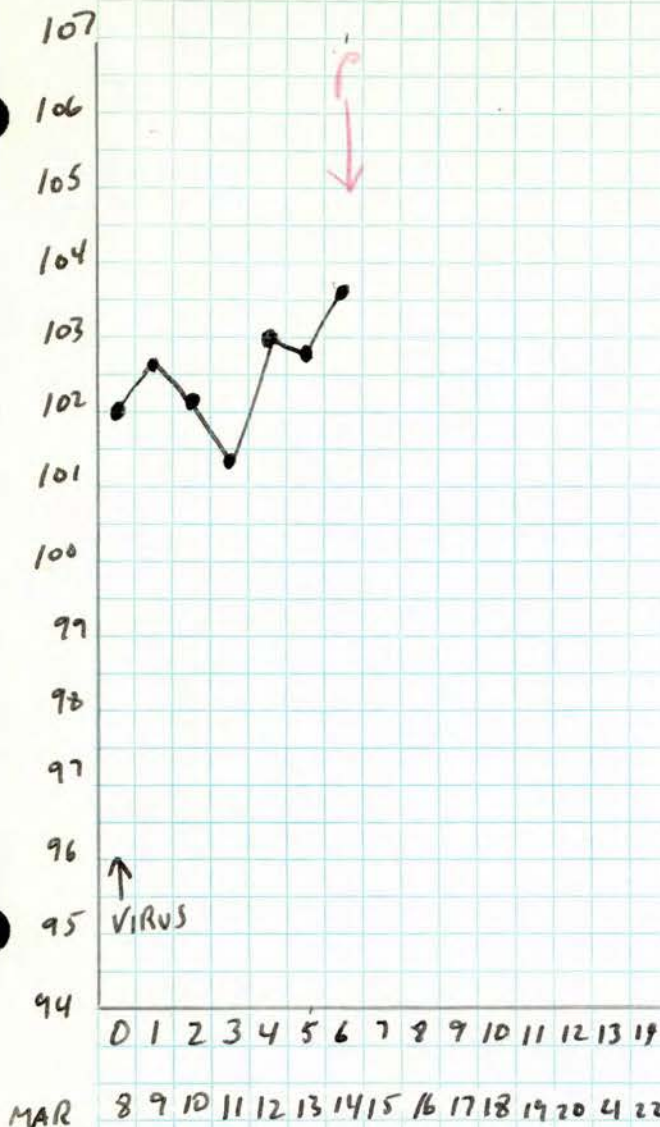
Sacrificed, Cord + medulla removed + frozen in liquid N₂ to be used in virus prod.

BAP-000

CYN 1868

K-SK-Ice

MAR 8 1951



3/11/51 - weak right upper. - O.K.

3/14/51 - Am - Partial paralysis of uppers; v. weak lowers.

Sacrificed - Cord + medulla frozen; to be used -
virus Prod

BAP-020



MAR 8 9 10 11 12 13 14 15 16 17 18 19 20 21 22

3/11/51 - Partial paralysis of extremities + back, Prostrate;
Crawls, alert.

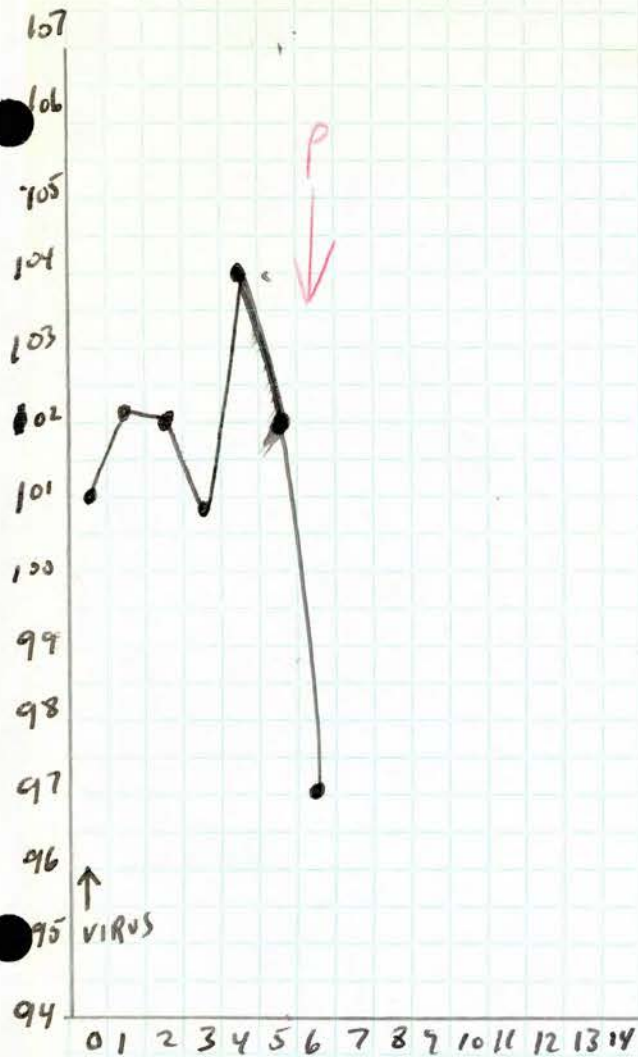
Sacrificed - Cord + medulla removed + frozen in
liquid N₂, to be used in virus prod.

BAP-000

CYN-1870

Y-SK-Ice

MAR 8 1951

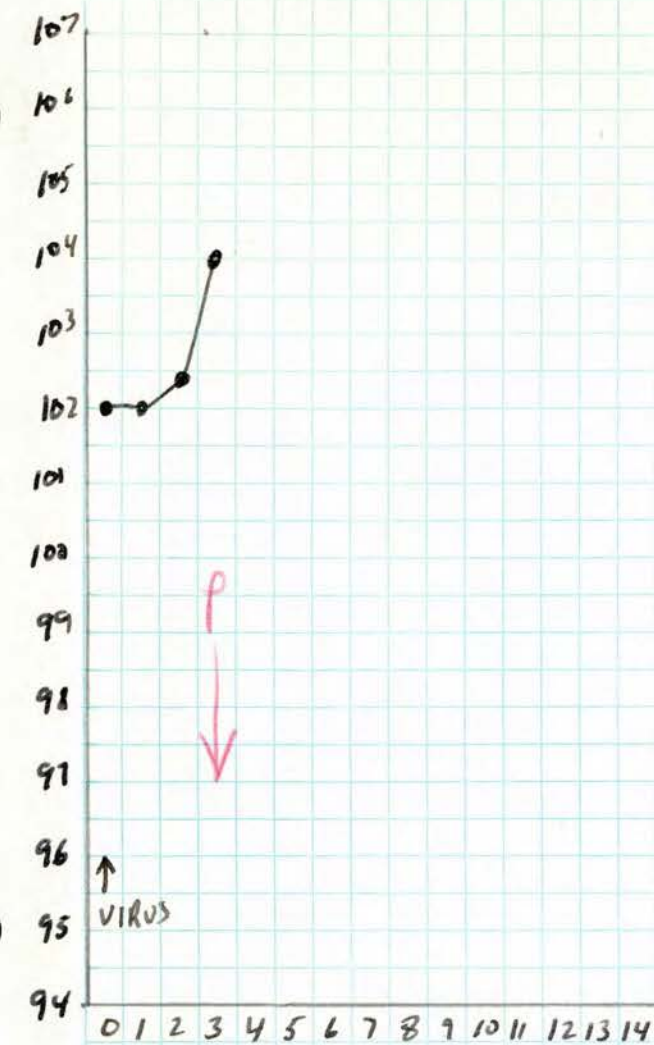


MAR 8 9 10 11 12 13 14 15 16 17 18 19 20 21 22

3/14/51 - Am. - Partial paralysis of left hind limbs & back; Can not sit up; Crawls.

Sacrificed - Cord + medulla frozen, to be used - virus pool.

BAP-000



MAR 8 9 10 11 12 13 14 15 16 17 18 19 20 21 22

3/11/51 - Partial paralysis of upper, lower + back; into =
great difficulty; very alert.

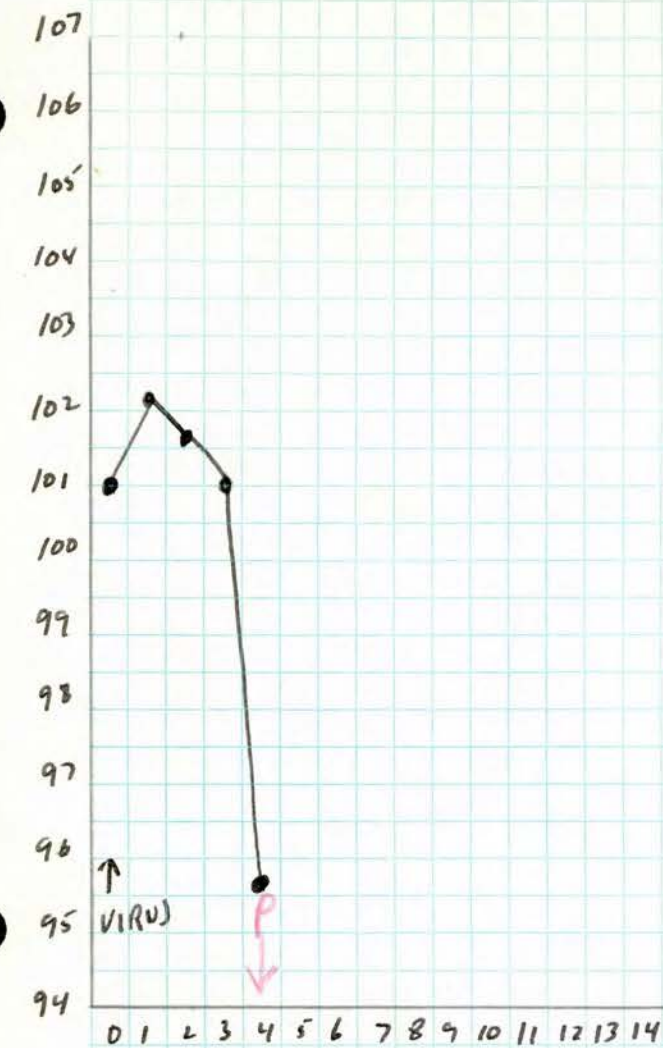
Sacrificed - Cord + medulla removed + frozen in
liquid N₂, to be used in Y-SK Pool.

BAP-000

CYN-1372

Y-SK-Ice

MAR 8 1951

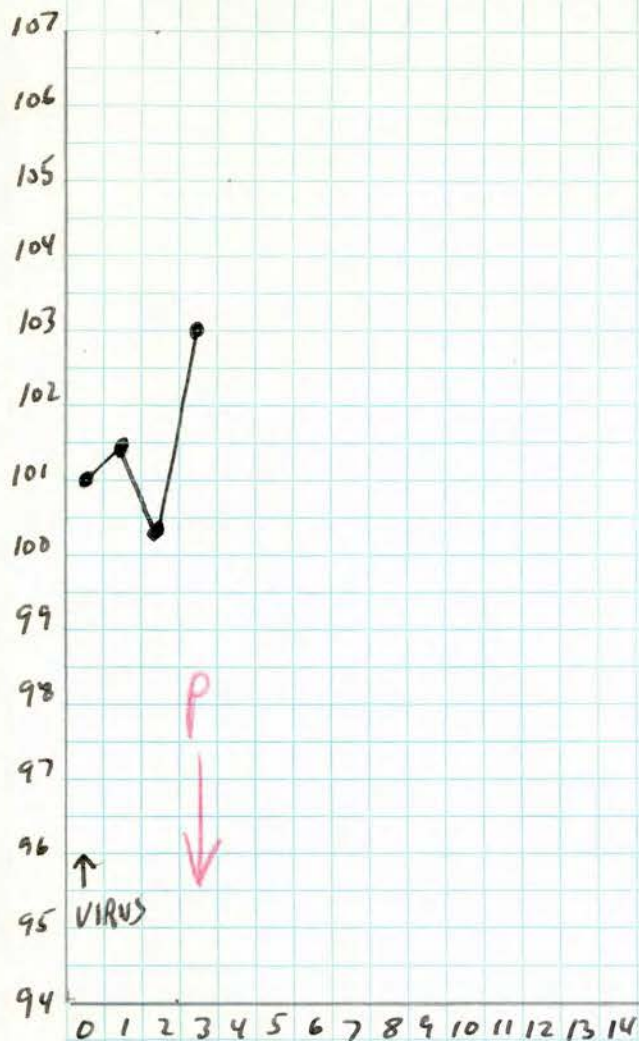


MAR. 8 9 10 11 12 13 14 15 16 17 18 19 20 21 22

3/12/51 - Partial Paralysis of uppers.

Sacrificed - Cord & medulla removed & frozen in liquid N₂, to be used in virus part.

BAP-000



Mar. 8 9 10 11 12 13 14 15 16 17 18 19 20 21 22

3/11/51 - Paralysis of right facial muscles involving eye & mouth; partial paralysis of its upper.

Sacrificed - Cord + medulla removed + froze, to be used in virus pool.

BAP-070

CYN-1883

Y-sk-Ice

MAR 8 1951



MAR. 8 9 10 11 12 13 14 15 16 17 18 19 20 21 22

3/14/51 - Am - almost complete Paralysis of uppers.

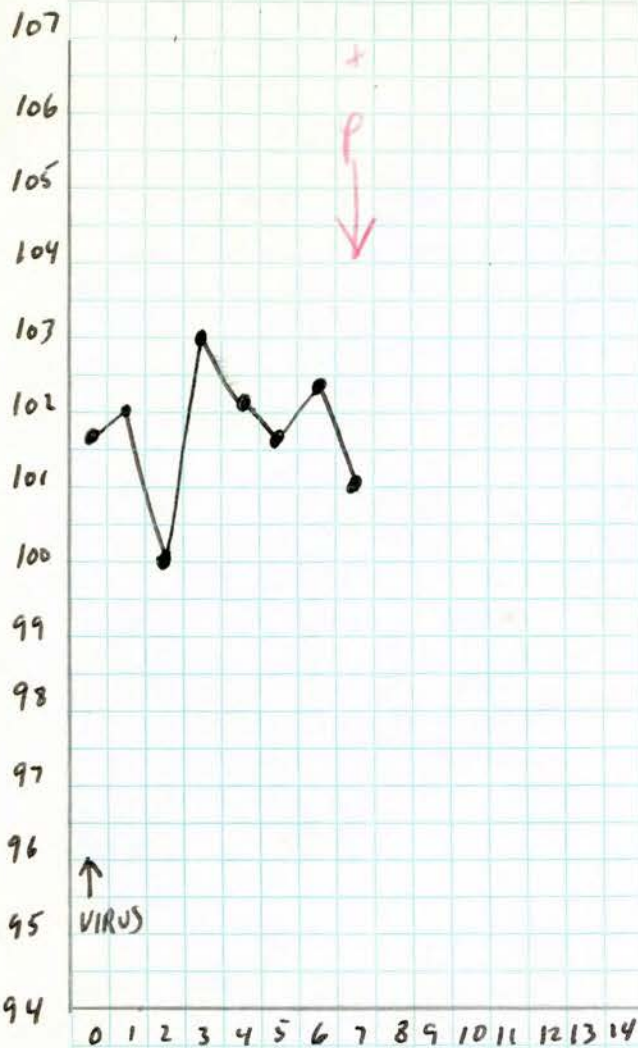
Sacrificed - Cord + medulla frozen, to be used in virus pool

BAP-000

CYN-1884

Y-SK-Ice

MAR 8 1951



MAR 8 9 10 11 12 13 14 15 16 17 18 19 20 21 22

3/15/51 - Partial Paralysis of lower

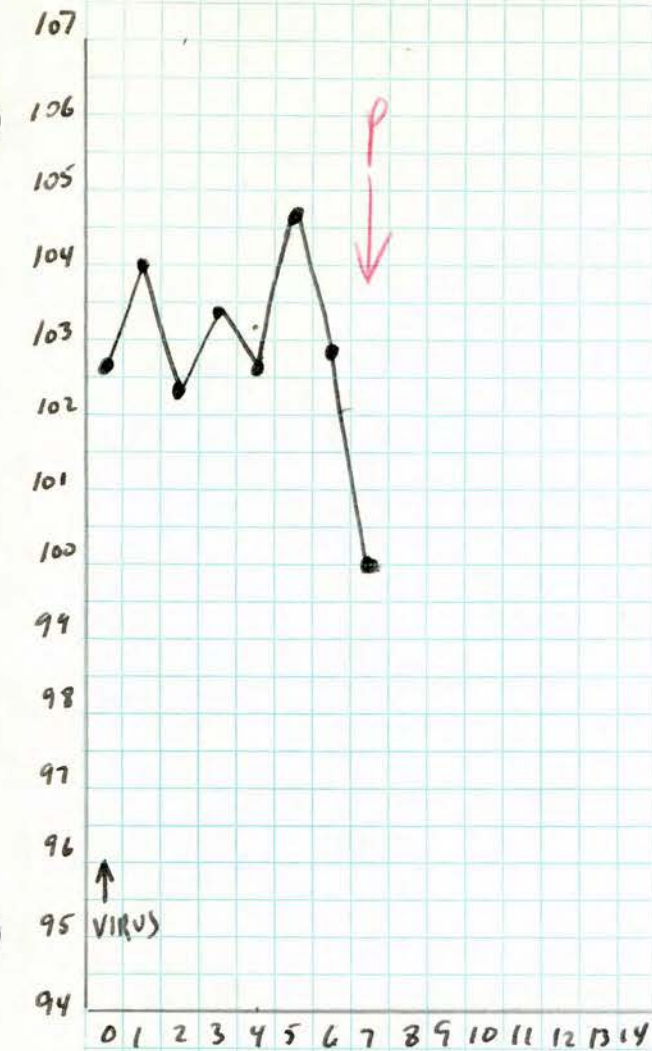
Sacrificed - Cord + medulla frozen, to be used in virus pool.

BAP-000

CYN - 1885

Y-5A-1ce

MAR 8 1951



MAR 8 9 10 11 12 13 14 15 16 17 18 19 20 21 22

3/14/51 - AM - Chumsey - lowers; no definite Paraly in

3/15/51 - Partial Paraly in of lowers + left upper.

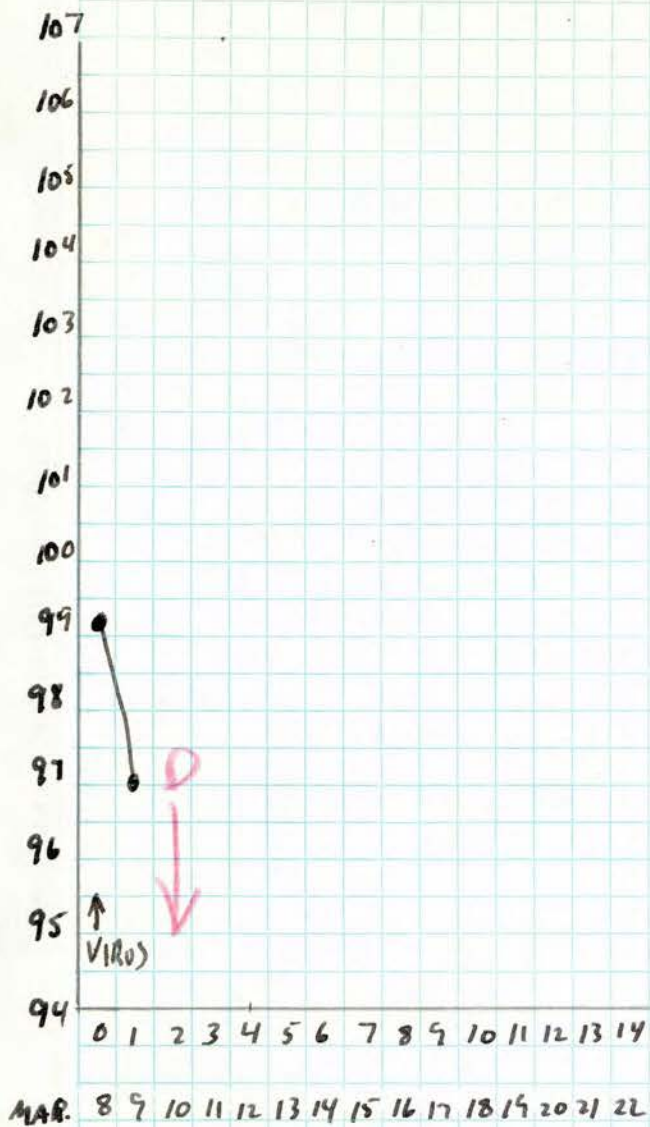
Sacrificed - Cord + medulla frozen, to be used in virus pool.

BAP-000

CYN - 1886

Y-SK-ICE

MAR 8 1951



3/10/51 - Am - Dead, discarded

CYN- 1887

Y-SK-Ice

MAR 8 1951

107
106
105
104
103
102
101
100
99
98
97
96
95
94

0 1 2 3 4 5 6 7 8 9 10 11 12 13 14

MAR 8 9 10 11 12 13 14 15 16 17 18 19 20 21 22

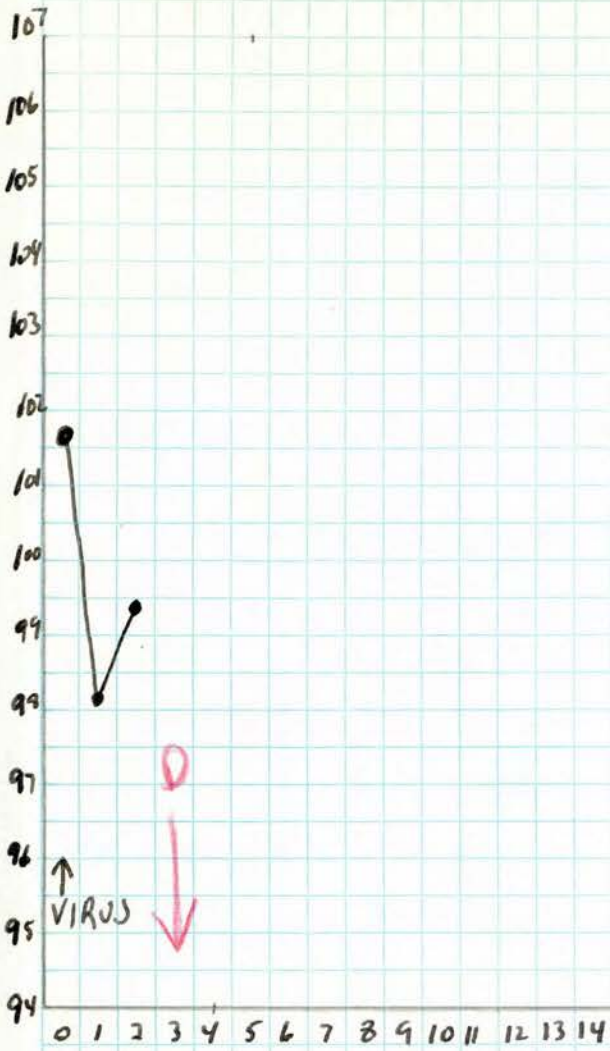
3/10/51 - Am - dead, discarded



CYN - 1888

Y-SM-Ice

MAR 8 1951



MAR 8 9 10 11 12 13 14 15 16 17 18 19 20 21 22

Y-SK Virus pool from Cynomolgus monkey

MAR 26 1951

VIRUS - Y-SK mouse pool II 11/24/50 - 10% blend in saline.
0.5 cc of uncentrifuged 10% blend into right thalamic area.
Inoculated 3/26/51 pm.

MONKEYS - 13 Cynomolgus monkey

CYNOMOLGUS

1849

Prostr ~~D~~ - Acute Polio Histology

1850

P₅

1851

P₉

1852

P₇

1853

P₁₀

1855

P₁₀

1857

P₃

1859

P₆

1860

P₆

1861

Sacrificed₁₀ (no def analysis) - Acute Polio Histology

1862

14

1873

P₉

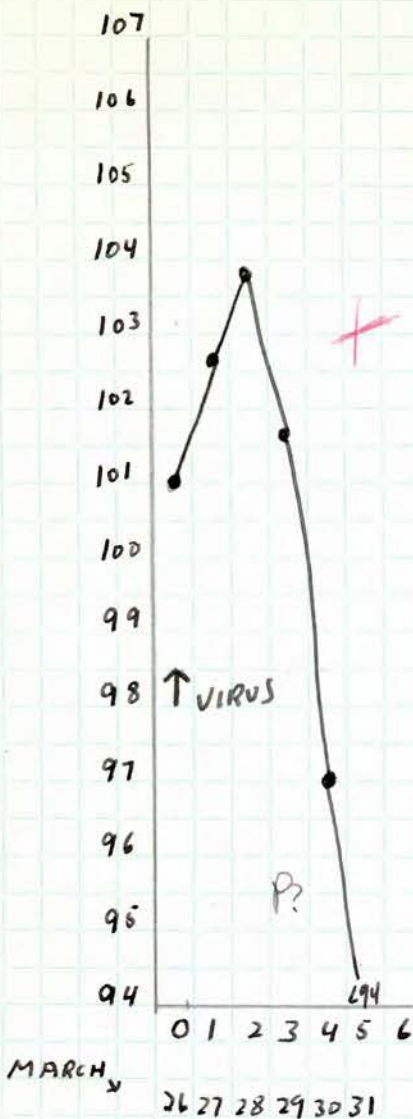
1874

P₅

4/19/51 Cords + medullas of all the above monkeys, weighed + thawed.
Material (weighed 67.8 grams) was placed in chilled Waring
blender cup + blended = 610 cc of chilled sterile saline
for 5 minutes at high speed.

* Monkey pool prepared 3/16/51 thawed + mixed =
this material + entire amount of the mixture was
distributed in 10 cc amounts in rubber stoppered
ampule Monkey Pool I 3/16 + 4/19/51. 115 ampules frozen
in 3 cartons in CO₂ box.

BAP-000



Histology - Acute polymorphonuclear
neuronophagia and
interstitial infiltration

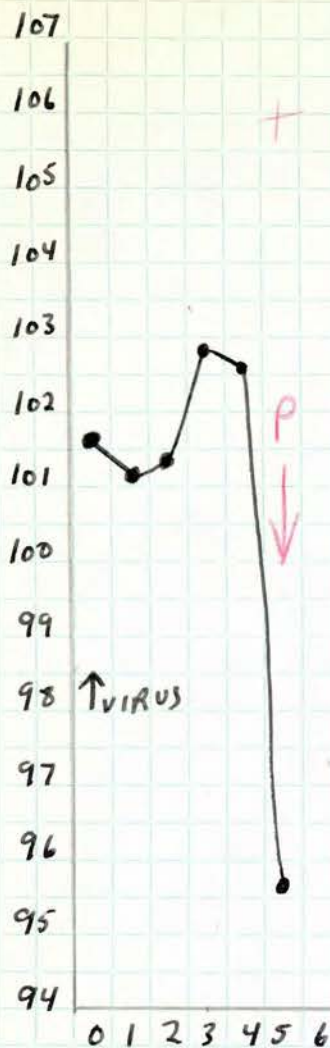
- 3/29 - walk right leg, hunched
 - 3/30 - very weak; hunched, ruffled; no Paralysis evident
 - 3/31 - Am - Prostrate, terminal; Sacrificed + medulla + cord frozen in liquid for post op section from Cervical and thoracic lesions.
- Piece of Cervical cord in Z.A.

BAP-000

CYN 1850

Y-SK - I. ce.

MAR 26 1951



MARCH 26 27 28 29 30 31

3/29/51 - 6:00 pm Constant hoarse grunting, no
bulbar Paralysis of extremities. Impression of
Polio.

3/30/51 - no longer grunts, weak, ruffled.

3/31/51 - 9:00 AM - Extremity paralysis of all 4 limbs + back;
Present.

10:30 AM - Dead

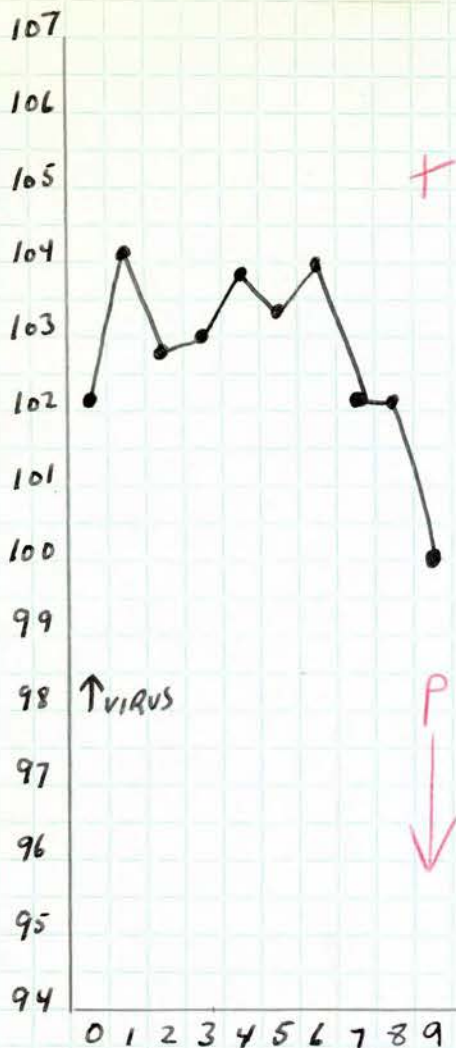
11:00 AM - Cord + medulla removed for virus Prod.

BAP-000

CYN 1851

Y-SK-Ice

MAR 26 1951



MARCH 26 27 28 29 30 31 1 2 3 4

3/29 - 6:00 pm - Pilot motor

3/30 - Same

4/4/51 - AM - Extensive paralysis of lower.

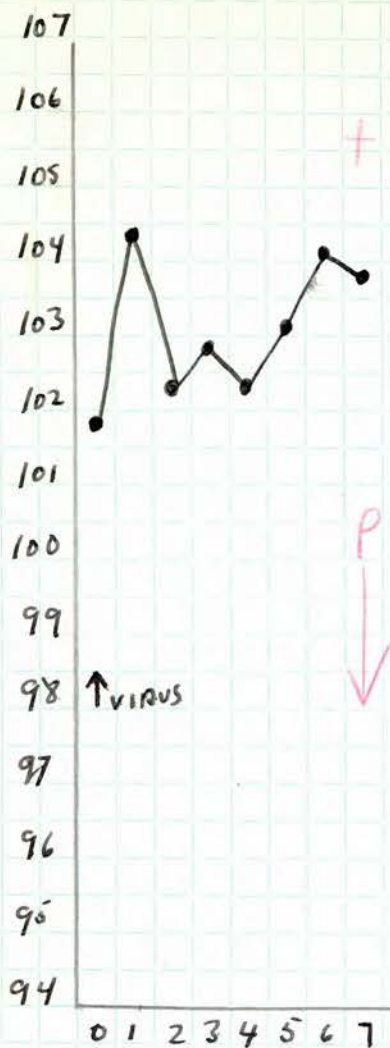
Sacrificed; cord + medulla removed for Y-SK Pool.

BAP-000

CYN 1852

Y-SK ICE.

MAR 26 1951



MARCH 26 27 28 29 30 31 1 2

3/29
3/30

- Pulso-meter
- Same

4/2/51

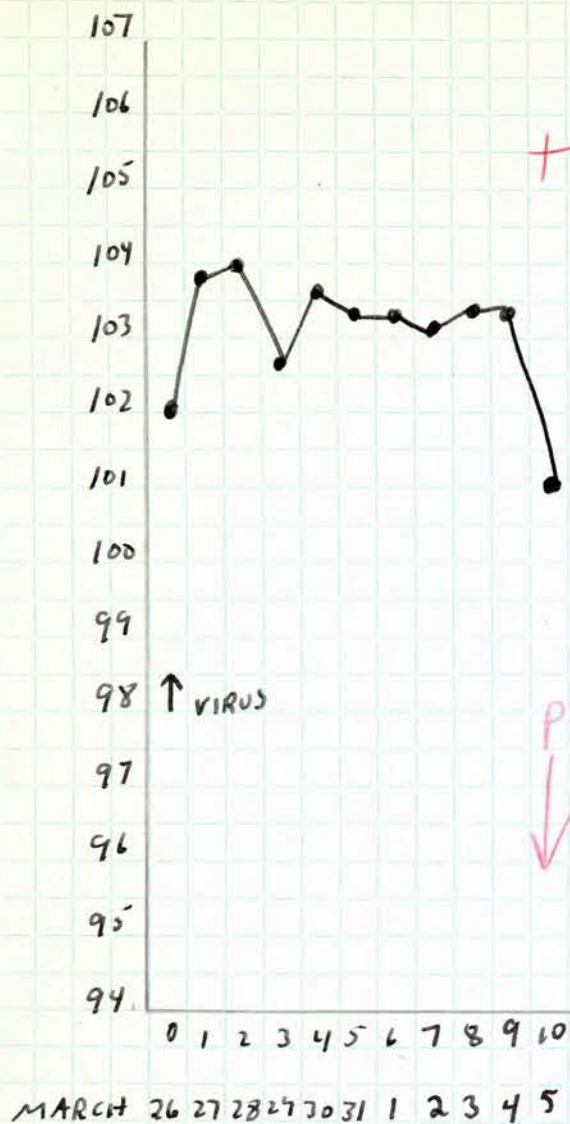
- Partial Paralysis of right upper
Sacrificed - Cord + medulla removed for Post.

BAP- 000

CYN 1853

Y-JK-I.C.R.

MAR 26 1951



4/5/51 - AM - Weak lower; no definite Paralysis.
 PM - Partial Paralysis of lower & deltoids.
 Sacrificed for YSK Pool - Cord & medulla frozen.

BAP-000

CYN 1855

Y-SK Ice.

MAR 26 1951



MARCH 26 27 28 29 30 31 1 2 3 4 5

4/5/51 - Pm - Paralysis of right deltoid.

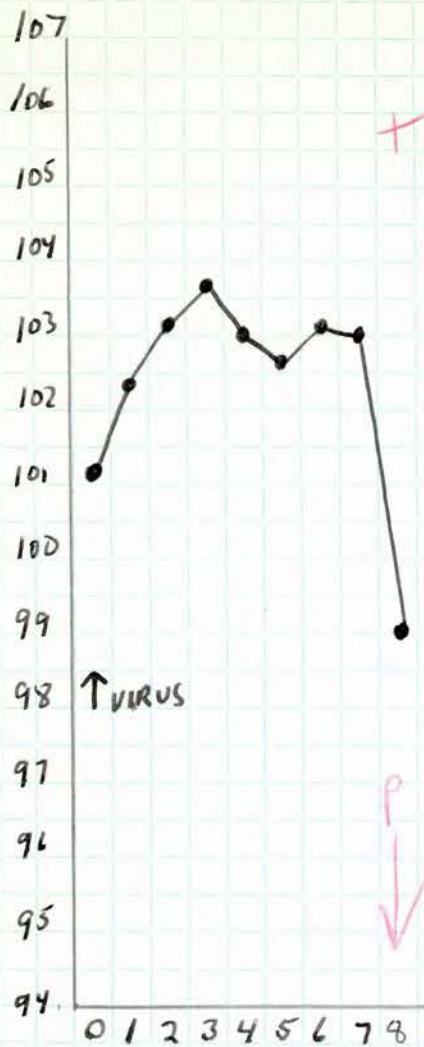
Sacrificed - Cord + medulla removed for Y-SK Prod.

BAP. - 000

CYN 1857

Y-SK Ice

MAR 26 1951



MARCH 26 27 28 29 30 31 1 2 3

3/29 6:00 pm - Pilot motor

4/2/51 - Weak lowers ; no definite paralysis

4/5/51 - Extensive Paralysis of lowers

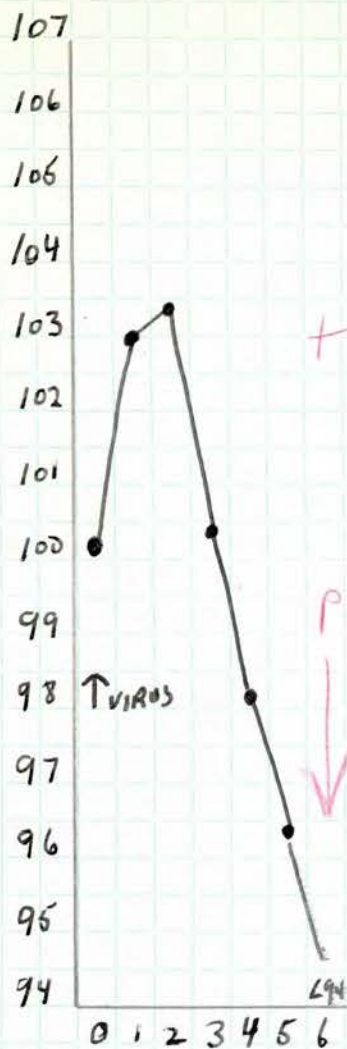
Sacrificed - Cord + medulla frozen for post.

BAP. - 800

CYN 1859

Y-SK I.Ce

MAR 26 1951



MARCH 26 27 28 29 30 31 1

3/30 - weak; very thin; no paralysis.

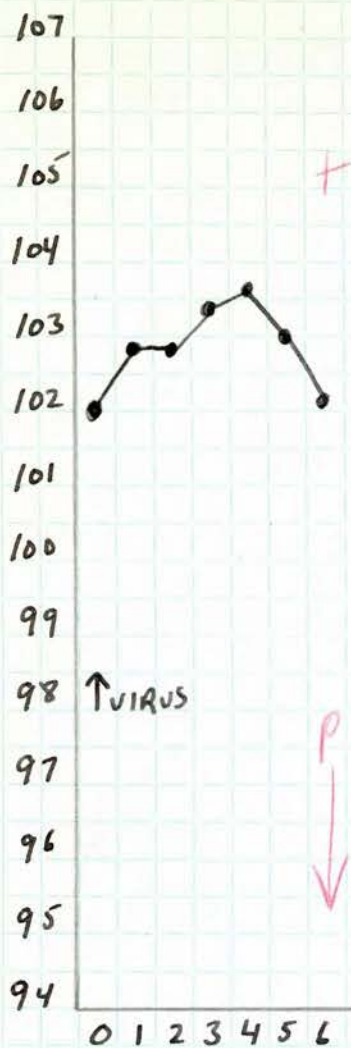
4/1/51 - Partial paralysis of extremities + back; Prostrate.
Sacrificed - cord + medulla frozen for pool

BAP 000

CYN 1860

VSK-ICE

MAR 26 1951



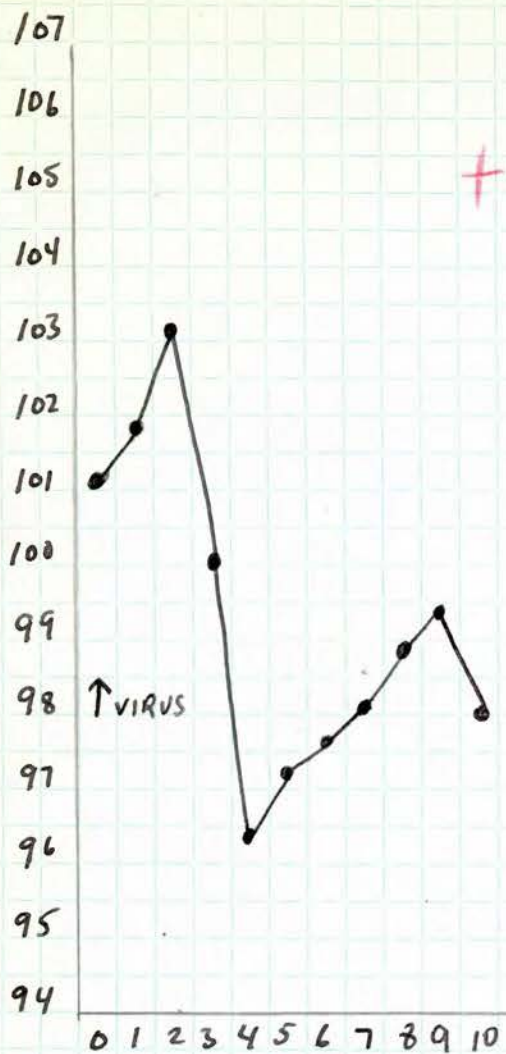
↑ VIRUS

MARCH 26 27 28 29 30 31 1

3/29
3/30
4/1/51

Prionotus
Same
- Partial Paralysis of lowers.
Sacrificed, Cord + medulla frozen for Y-St. Pool

BAP. 000



Histology - Acute polymorpho
nuclear neuronophagia
and infiltration.

MARCH 26 27 28 29 30 31 | 2 3 4 5

3/30 - 5 hr, weak.

4/5/51 - Very thin, sits - extreme difficulty,
rolls on cage floor.

J.W. could not
establish localized
paralysis

Sacrificed - Cord + medulla taken
in Pool (if sections are positive)

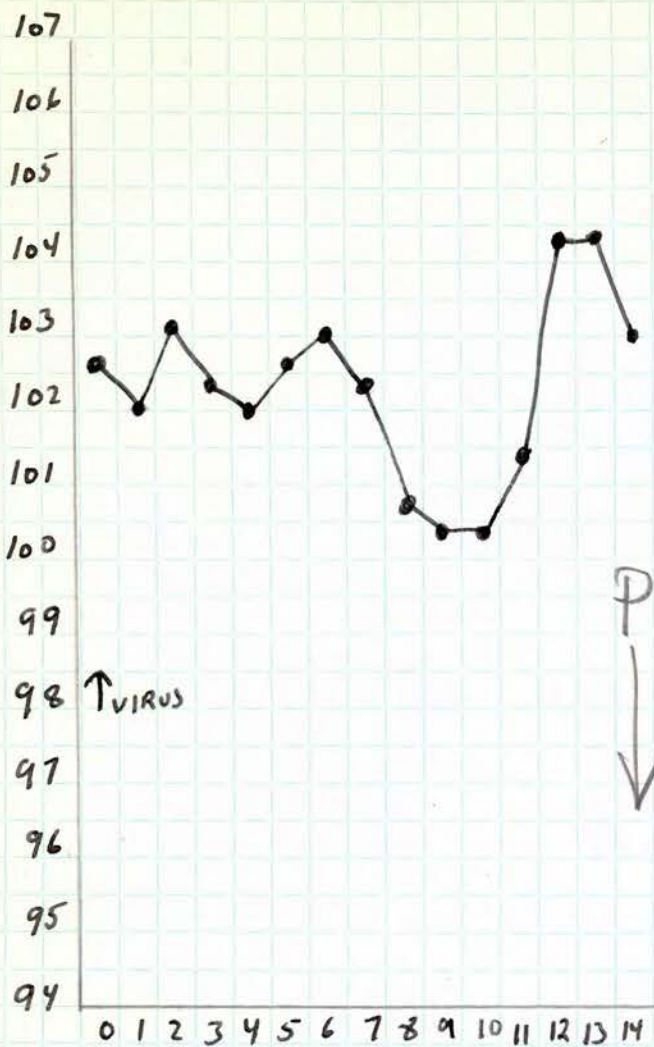
Portion of cervical cord in ZA.

Intestines greatly bloated = gas BAP-000

CYN 1862

Y-SK Ice

MAR 26 1951



MARCH 26 27 28 29 30 31 1 2 3 4 5 6 7 8 9

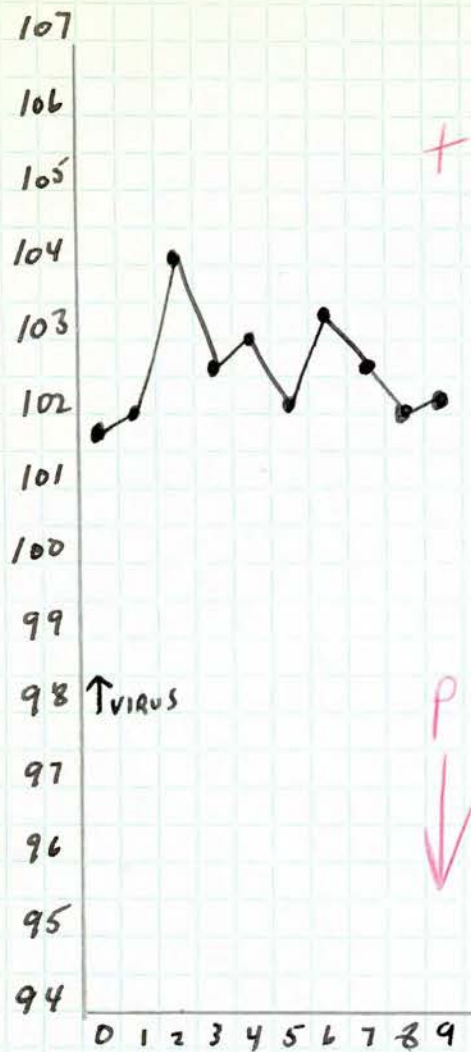
4/3/51 - Weak lower; not definitely paralyzed.
 4/9/51 - Partial Paralysis of lower.
 Sacrificed for Y-SK Pool - cord + medulla frozen.

BAP. 000

CYN 1873

Y-SK Ice

MAR 26 1951



MARCH 26 27 28 29 30 31 1 2 3 4

4/4/51 - Am - Partial Paralysis of extremities; sits with difficulty.

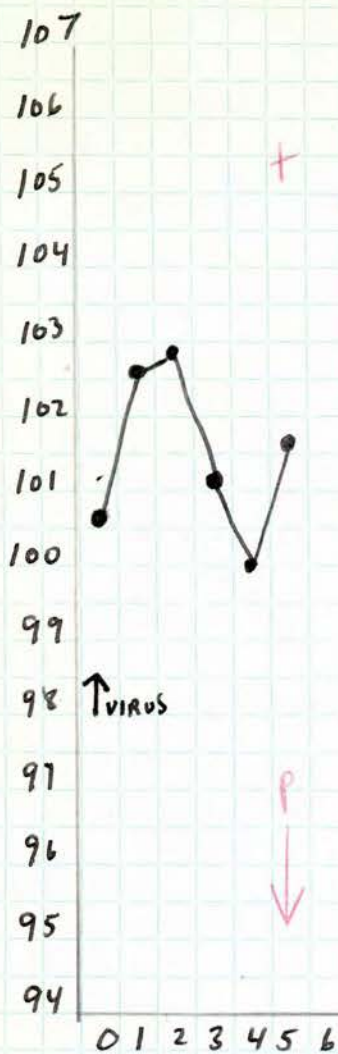
Sacrificed, cord & medulla removed for Y-SK Pool.

BAP-000

CYN 1874

Y-SK ICE.

MAR 26 1951



MARCH 21 27 28 29 30 31

3/30 - weak upper, no definite paralysis

3/31/51 - AM almost complete paralysis of upper.

Sacrificed. Cord + medulla frozen for post

BAP. 000

Titration of Y-SK monkey Pool I

MAR 17 1951

VIRUS - Y-SK monkey pool I of 3/16/51 - 109 blood in saline.
2000 SN diluted in saline for this titration.

MICE - 18-20 gram Masfield albinos (female).

	1	2	3	4	5	6	7	8	9	10	11	12	13	14	15	16	17	18	19	20	21	22	23	24	25	26	27	28	29	30		
10^{-1} 10/10	1	-	D																													
	2	-	D																													
	3	-	-	WPPD																												
	4	-	-	-	PD																											
	5	-	-	-	-	PWPPD																										
	6	-	-	-	-	-	-	?	P	D																						
	7	-	-	-	-	-	-	-	-	-	D																					
	8	-	-	-	-	-	-	-	-	-	-																					
	9	-	-	-	-	-	-	-	-	-	-																					
	10	-	-	-	-	-	-	-	-	-	-																					
10^{-2} 9/10	1	-	-	-	-	-	(CN)	D																								
	2	-	-	-	-	-	-	-	D																							
	3	-	-	-	-	-	-	-	-	WWD																						
	4	-	-	-	-	-	-	-	-	-	-																					
	5	-	-	-	-	-	-	-	-	-	-																					
	6	-	-	-	-	-	-	-	-	-	-																					
	7	-	-	-	-	-	-	-	-	-	-																					
	8	-	-	-	-	-	-	-	-	-	-																					
	9	-	-	-	-	-	-	-	-	-	-																					
	10	-	-	-	-	-	-	-	-	-	-																					
10^{-3} 6/10	1	-	-	(D)																												
	2	-	-	-																												
	3	-	-	-																												
	4	-	-	-																												
	5	-	-	-																												
	6	-	-	-																												
	7	-	-	-																												
	8	-	-	-																												
	9	-	-	-																												
	10	-	-	-																												
10^{-4} 2/9	1	-	-	-	-	-	-	-	-	P	D																					
	2	-	-	-	-	-	-	-	-	-	-																					
	3	-	-	-	-	-	-	-	-	-	-																					
	4	-	-	-	-	-	-	-	-	-	-																					
	5	-	-	-	-	-	-	-	-	-	-																					
	6	-	-	-	-	-	-	-	-	-	-																					
	7	-	-	-	-	-	-	-	-	-	-																					
	8	-	-	-	-	-	-	-	-	-	-																					
	9	-	-	-	-	-	-	-	-	-	-																					
	10	-	-	-	-	-	-	-	-	-	-																					

$10^{-2.4}$

10/10

7/10

1/7

1/9

36 37
(CN) PD

36 37
D
(CN) D

(D)

TITRATION OF Y-SK MONKEY POOL I MAY 23 1951
 POOL OF 3/16/51 + 4/19/51 MATERIAL

VIRUS - Y-SK MONKEY POOL I of 3/16/51 + 4/19/51 - 10%
 blend in saline. @ 2cc removed from 10cc ampule
 + spun at 2000 RPM for 10 min.
 2000 SN diluted in saline used for this titration.

MICE - 18-20 gram Musfield albino (female).

	1	2	3	4	5	6	7	8	9	10	11	12	13	14	15	16	17	18	19	20	21	22	23	24	25	26	27	28	29	30	31	32	33	34				
10 ⁻¹	1	-	D																																			
	2	-	PP	D																																		
	3	-	-	PP	D																																	
	4	-	-	-	P	PP	D																															
	5	-	-	-	-	PP	PP	PP	D																													
10/10	6	-	-	-	-	-	PP	D																														
	7	-	-	-	-	-	-	P	D																													
	8	-	-	-	-	-	-	-	W	D																												
	9	-	-	-	-	-	-	-	-	W	PP	PP	D																									
	10	-	-	-	-	-	-	-	-	-	-	-	-	-	-	-	-	-	-	-	-	-	-	-	-	-	-	-	-	-	-	-	-	-	-	-	PP	D

10^{-2.8}

10/10

10 ⁻²	1	-	-	P	D																																	
	2	-	-	-	-	-	-	W	D																													
	3	-	-	-	-	-	-	-	-	P	D																											
	4	-	-	-	-	-	-	-	-	-	EE	D																										
	5	-	-	-	-	-	-	-	-	-	W	PP	PP	D																								
9/10	6	-	-	-	-	-	-	-	-	-	-	-	-	-	-	-	-	-	-	-	-	-	-	-	-	-	-	-	-	-	-	-	-	-	-	-	-	
	7	-	-	-	-	-	-	-	-	-	-	-	-	-	-	-	-	-	-	-	-	-	-	-	-	-	-	-	-	-	-	-	-	-	-	-	-	
	8	-	-	-	-	-	-	-	-	-	-	-	-	-	-	-	-	-	-	-	-	-	-	-	-	-	-	-	-	-	-	-	-	-	-	-	-	-
	9	-	-	-	-	-	-	-	-	-	-	-	-	-	-	-	-	-	-	-	-	-	-	-	-	-	-	-	-	-	-	-	-	-	-	-	-	-
	10	-	-	-	-	-	-	-	-	-	-	-	-	-	-	-	-	-	-	-	-	-	-	-	-	-	-	-	-	-	-	-	-	-	-	-	-	-

9/10

10 ⁻³	1	-	-	-	-	-	-	-	-	P	D																											
	2	-	-	-	-	-	-	-	-	-	-	-	-	-	-	-	-	-	-	-	-	-	-	-	-	-	-	-	-	-	-	-	-	-	-	-	-	
	3	-	-	-	-	-	-	-	-	-	-	-	-	-	-	-	-	-	-	-	-	-	-	-	-	-	-	-	-	-	-	-	-	-	-	-	-	-
	4	-	-	-	-	-	-	-	-	-	-	-	-	-	-	-	-	-	-	-	-	-	-	-	-	-	-	-	-	-	-	-	-	-	-	-	-	-
	5	-	-	-	-	-	-	-	-	-	-	-	-	-	-	-	-	-	-	-	-	-	-	-	-	-	-	-	-	-	-	-	-	-	-	-	-	-
5/9	6	-	-	-	-	-	-	-	-	-	-	-	-	-	-	-	-	-	-	-	-	-	-	-	-	-	-	-	-	-	-	-	-	-	-	-	-	
	7	-	-	-	-	-	-	-	-	-	-	-	-	-	-	-	-	-	-	-	-	-	-	-	-	-	-	-	-	-	-	-	-	-	-	-	-	
	8	-	-	-	-	-	-	-	-	-	-	-	-	-	-	-	-	-	-	-	-	-	-	-	-	-	-	-	-	-	-	-	-	-	-	-	-	-
	9	-	-	-	-	-	-	-	-	-	-	-	-	-	-	-	-	-	-	-	-	-	-	-	-	-	-	-	-	-	-	-	-	-	-	-	-	-
	10	-	-	-	-	-	-	-	-	-	-	-	-	-	-	-	-	-	-	-	-	-	-	-	-	-	-	-	-	-	-	-	-	-	-	-	-	-

4/9

3839
 ↑
 ↑

12/10

10⁻⁴

10 ⁻⁴	1	-	-	-	-	-	-	-	-	-	-	-	-	-	-	-	-	-	-	-	-	-	-	-	-	-	-	-	-	-	-	-	-	-	-	-	-	-	
	2	-	-	-	-	-	-	-	-	-	-	-	-	-	-	-	-	-	-	-	-	-	-	-	-	-	-	-	-	-	-	-	-	-	-	-	-	-	
	3	-	-	-	-	-	-	-	-	-	-	-	-	-	-	-	-	-	-	-	-	-	-	-	-	-	-	-	-	-	-	-	-	-	-	-	-	-	-
	4	-	-	-	-	-	-	-	-	-	-	-	-	-	-	-	-	-	-	-	-	-	-	-	-	-	-	-	-	-	-	-	-	-	-	-	-	-	-
	5	-	-	-	-	-	-	-	-	-	-	-	-	-	-	-	-	-	-	-	-	-	-	-	-	-	-	-	-	-	-	-	-	-	-	-	-	-	-
	6	-	-	-	-	-	-	-	-	-	-	-	-	-	-	-	-	-	-	-	-	-	-	-	-	-	-	-	-	-	-	-	-	-	-	-	-	-	-
	7	-	-	-	-	-	-	-	-	-	-	-	-	-	-	-	-	-	-	-	-	-	-	-	-	-	-	-	-	-	-	-	-	-	-	-	-	-	-
	8	-	-	-	-	-	-	-	-	-	-	-	-	-	-	-	-	-	-	-	-	-	-	-	-	-	-	-	-	-	-	-	-	-	-	-	-	-	-
	9	-	-	-	-	-	-	-	-	-	-	-	-	-	-	-	-	-	-	-	-	-	-	-	-	-	-	-	-	-	-	-	-	-	-	-	-	-	-
	10	-	-	-	-	-	-	-	-	-	-	-	-	-	-	-	-	-	-	-	-	-	-	-	-	-	-	-	-	-	-	-	-	-	-	-	-	-	-

(D)

