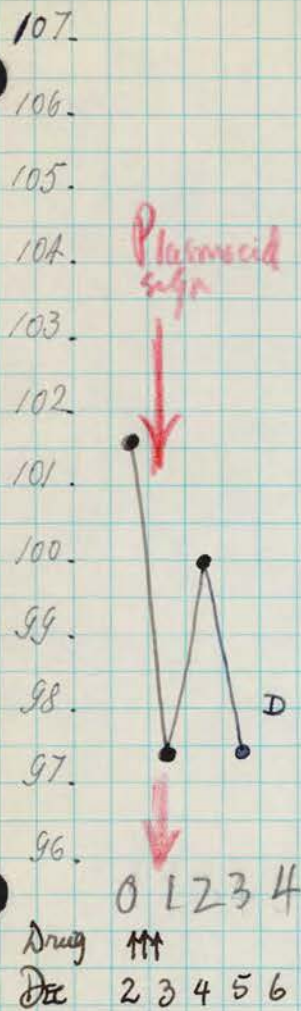


VI
1165
1174
1178
1186

Regular autopsy as soon after death
as possible

Rh. 1174 - Only PLASMOCID by stomach tube. GROUP VI



- Dec. 2 - Drug started about 6:30 PM
- Dec. 3 - 12:30 AM - 2nd dose
 9 A.M. - Plasmocid signs present - 3rd dose given
 2:30 PM - Plasmocid signs advanced
Drug discontinued
- Dec. 4 - 9 AM - Condition same
 3 PM - Rolling on floor - appears very severely affected
- DEC. 5 - 11 AM Same condition -
 4 PM Same condition -
 9 PM. Very prostrate.
- DEC. 6 - 5 AM Dead.
 Immediate autopsy. CNS in L.A.
 Keweenaw: normal.

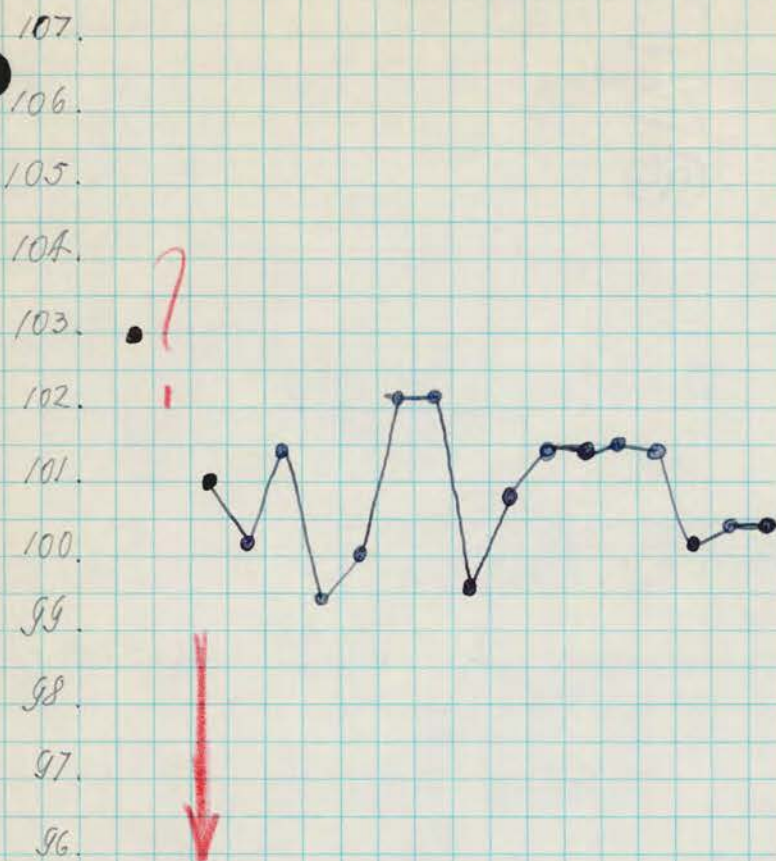
Memorandum concerning monkeys which received plasmocid and were transferred to Dr. Schmidt. December 21, 1948

Rhesus No. 1165: Normal monkey. Original weight, 2.038 kilo. Plasmocid - 1 mg./kilo. Started December 2, 6:30 p.m. December 3, between 12:30 a.m. and 9 p.m., received four doses of 1 mg. each/kilo. December 4, 9 a.m., exhibited advanced plasmocid signs. One more dose of drug given and then discontinued.

Rhesus No. 992x + Rhesus No. 993x: Previously used in poliomyelitis neutralization test but remained normal. December 2, plasmocid - 1 mg./kilo given at 6:30 p.m. December 3, two additional doses of same size at 12:30 a.m. and 9:00 a.m. At 9:00 a.m. on December 3 definite plasmocid signs present which were more advanced and severe at 2:30 p.m. when drug was discontinued. Both 992x and 993x remained severely affected and were almost prostrate on the floor most of the time.

Rh. 1165

Only PLASMOCID GROUP VI
by stomach tube.



Drug ↑↑↑↑↑

DEC 2 3 4 5 6 7 8 9 10 11 12 13 14 15 16 17 18 19 20

Dec 2 - Drug started about 6:30 P.M.

Dec 3 - about 12:30 AM - 2nd dose

2:30 PM - diarrhea - otherwise ok.; sits hunched, however.

DEC 4 - 9 AM - Advanced "Plasmodium signs" - but decided to give one more dose.

3 PM - Drug discontinued -

DEC 5 - 11 AM - Advanced Plasmodium signs - Mucus diarrhea - cannot eat by himself because the mucus obstruction. Banana was given. Eated.

DEC 6 - 9 PM - Same condition.
9 AM - Same condition.
3 PM - " " Face somewhat red.
9 PM - " " " "

DEC 7 - 9 AM - Sit up. hunched over. " " "

3 PM - Same condition.
9 PM - " "

DEC. 8 - 9 AM - " " Not myotomus.
3 PM - " " No red face. Marked staining.
9 PM - " "

DEC. 9 - 9 AM - " "
3 PM - " "
9 PM - " "

DEC. 10 - 9 AM - " "
3 PM - " "
9 PM - " "

DEC. 11 - 9 AM - " "
3 PM - " "
9 PM - " "

DEC. 12 - 9 AM - " "

DEC. 13 - Same condition: Sit up, hunched over.

DEC. 14 - Same condition

DEC. 15 - " "

DEC. 16 - " "

DEC. 17 - " "

DEC. 18 - " "

DEC. 19 - " "

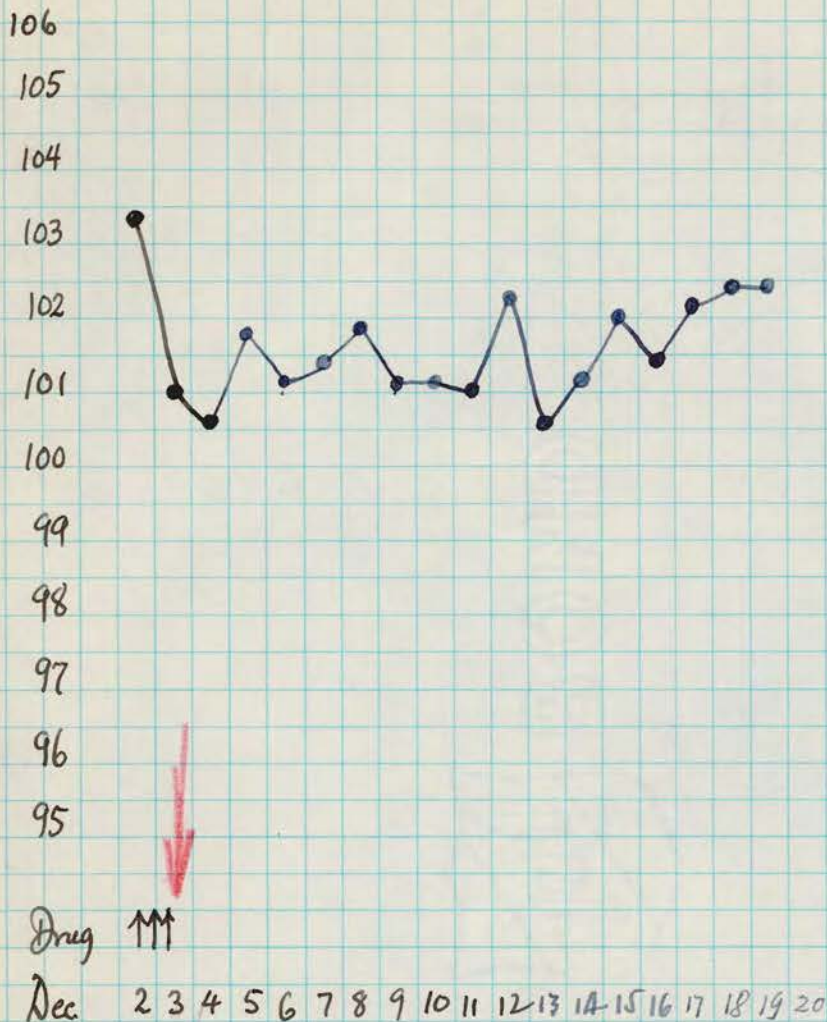
DEC. 20 - " " Disc. temp.

DEC. 21 / 28 " "

Transferred to Dr. Schmidt

Rh. 992 x

GROUP VI
Only PLASMOCID (1mg base/200
by stomach tube t.i.d.)



Dec. 2 - Drug started 6:30 PM

Dec. 3 - 12:30 AM - 2nd dose given
9 AM - appears OK - 3rd dose given
2:30 PM - advanced, severe "Plasmodium signs"

Drug discontinued

Dec. 4 - Very severely affected - on floor

DEC. 5 - Same condition -
4 PM - Cannot eat by himself - Banana was
given - Eaten -

DEC. 6 - 9 AM - Same condition
3 PM - " "
9 PM - " "

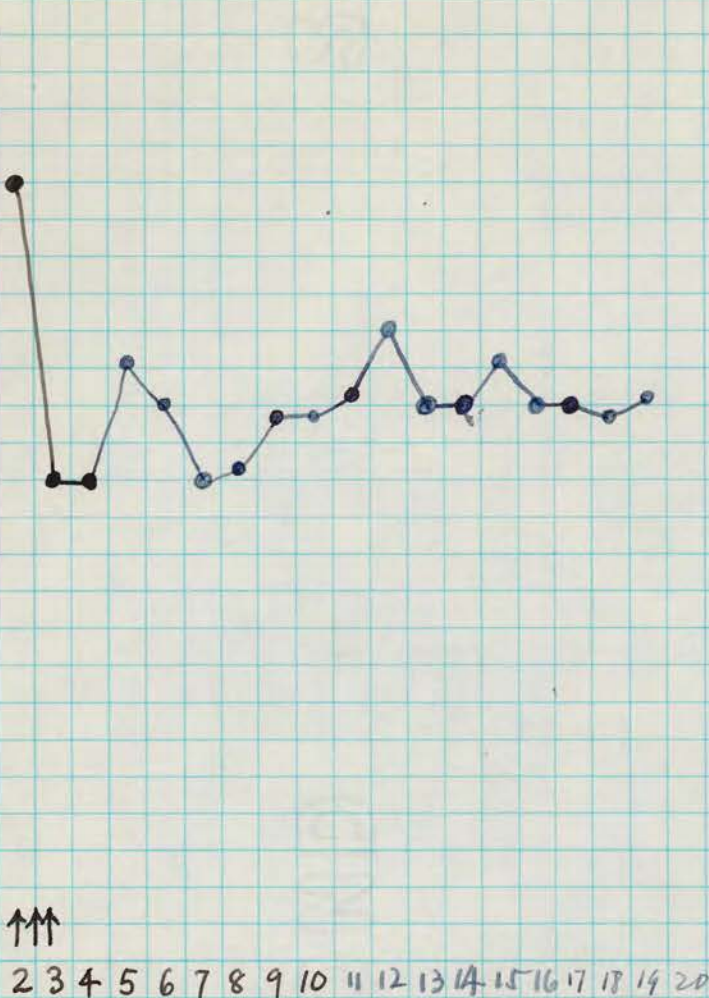
DEC. 7 - 9 AM - "
3 PM - " "

- DEC. 7 - 9 PM - Same condition - Can set up.
- DEC. 8 - 9 AM - " " "
 3 PM - " " "
 9 PM - " " "
- DEC. 9 - 9 AM - " " "
 3 PM - " " "
 9 PM - " " "
- DEC. 10 - 9 AM - Still myotagmus (less), starting less. - Other signs the same
 " - No myotagmus noted
 3 PM - Same condition
 9 PM - Same condition
- DEC. 11 - 9 AM - " " "
 3 PM - " " "
 9 PM - " " "
- DEC. 12 - 9 AM - " " "
- DEC. 13 - Irritated when stimulated, can set up.
- DEC. 14 - Same condition
- DEC. 15 - " " "
- DEC. 16 - " " "
- DEC. 17 - " " "
- DEC. 18 - " " "
- DEC. 19 - " " " disc. temp.
- DEC. 20 - " " "
- DEC. 21 - " " "

Transferred to Dr. Schmidt.

Kh. 9934 - Only PLASMOCID
 by stomach tube. GROOV

106
 105
 104
 103
 102
 101
 100
 99
 98
 97
 96
 95



Drug ↑↑↑
 Dec.

2 3 4 5 6 7 8 9 10 11 12 13 14 15 16 17 18 19 20

Dec. 2 - 1st dose of drug @ 6:30 PM

Dec. 3 - 12:30 AM - 2nd dose of drug
 9 AM - Definite "Plasmodic signs" - 3rd dose given
 2:30 PM - Advanced severe "plasmodic signs"
 Drug discontinued

Dec. 4 - 9 AM - Condition same
 3 PM - On floor - severely affected

DEC. 5 - Same condition -
 4 PM - Cannot eat because the incudaxdi-
 nation. Banana was given - Eated.

DEC. 6 - 9 AM - Same condition.
 3 PM - " "
 9 PM - " "

DEC. 7 - 9 AM - " "

DEC. 7	3 PM	Same condition	
	9 PM	Same condition	
DEC. 8	9 AM	"	"
	3 PM	"	"
	9 PM	"	"
DEC. 9	9 AM	"	" Still starting. No.
	3 PM	"	" Tagmen und aticant
	9 PM	"	" sometimes.
DEC. 10	9 AM	"	"
	3 PM	"	"
	9 PM	"	"
DEC. 11	9 AM	"	"
	3 PM	"	"
	9 PM	"	"
DEC. 12	9 AM	"	"
DEC. 13	Prostrated. When stimulated, can set up.		
DEC. 14	Same condition.		
DEC. 15	"	"	"
DEC. 16	"	"	"
DEC. 17	"	"	"
DEC. 18	"	"	"
DEC. 19	"	"	"
DEC. 20	"	"	"
DEC. 21/48	"	"	"

Transferred to Dr. Schmidt.

Bram: my car. -