

HETEROL

NOV 8 1948

Heterologous Challenge of Polio Convalescent Monkeys.

Ph. 631-

convalescent

challenged with

polio virus.



NOV 8 1948 - Inoc. I.C. with 0.5 cc of 1:200 [redacted] polio virus (100 PD₅₀) using Ph. 884X as control. (Ph. 884X record is with that of Ph. 699 - Hopkins convalescent)

CONDITION AT CHALLENGE: There is partial paralysis of both lowers with mod. severe bilateral atrophy R > L; uppers normal. - Animal is very active; climbs well.

DEC 6 1948

Challenge with MV virus.

Having withstood challenge with [redacted] virus (above) for 28 days, this monkey was today inoc. I.C. with 1.0 cc of 1:50 MV virus.

DAY	TEMP	Notes
0	102.2	
1	102.4	
2	102.6	
3	103.4	
4	105.6	O.K.
5	105.4	O.K.
6	104.7	? excited.
7	104.7	Same O.K.
8	102.6	Part. par. rt. upper now, weakness left upper; coarse tremors; flops over easily.
9	103.7	Partial par. of left upper now present; back weak but not prostrate. Tremors continue.
10	102.6	The par. of left upper is now almost complete. Tremors less marked; otherwise unchanged.
11	102.4	No change
12		"
13	102.0	No change.
14	103.6	"
15	102.8	"
16	103.0	No change; tremors now absent. (12/22/48 - Observation terminated. Discarded. } looks as if he would probably survive.

NOV 8 1948

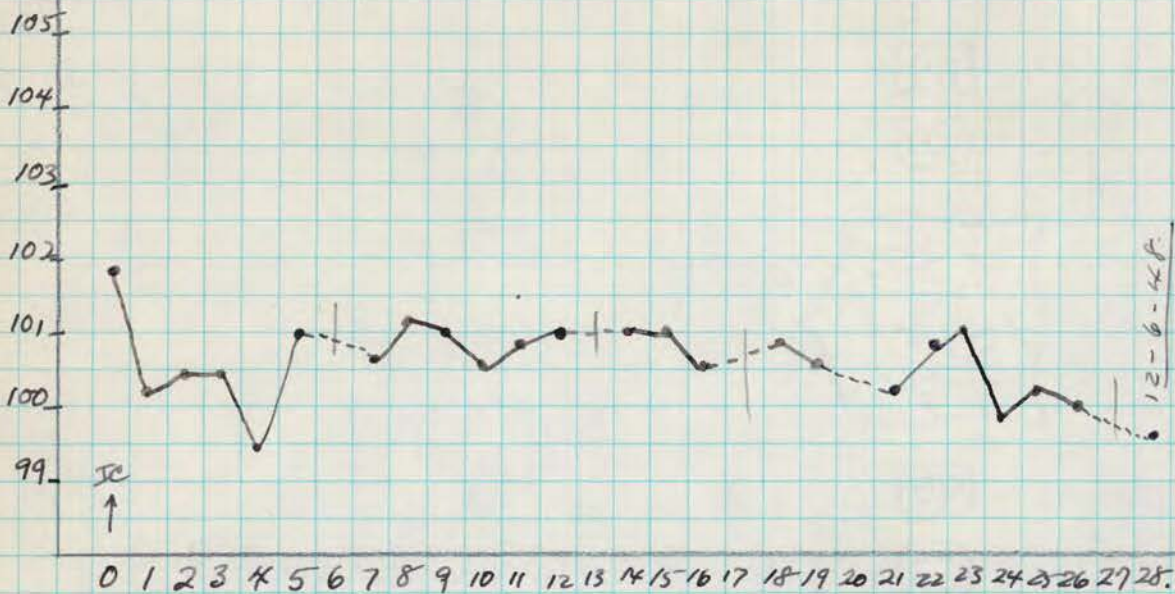
Heterologous Challenge of Polio Convalescent Monkey

Rh. 1931-

convalescent

challenged
with

polio virus.



NOV 8 1948 - Inoc. IC with 0.5 cc of 1:200 [redacted] virus - gent II (100 P.D₅₀) using Rh. 884X as control. (Rh. 884X record is with that of Rh. 699 - Hopkins convalescent)

CONDITION AT CHALLENGE: There is complete paralysis and severe atrophy of both lowers, so that monkey cannot sit at all. Partial paralysis of both uppers R > L and with mod. severe atrophy in both uppers but R > L. Moves neck, head and upper back (Thorax) well.

DEC 6 1948

Challenge with MV virus

Monkey remained unaffected for 28 days following challenge with [redacted] virus (above). This monkey was today challenged by IC. Inoc. of 1.0 cc of 1:50 MV virus.

DAY	TEMP	DAY	TEMP
0	99.6		
1	101.2	17	101.2 ✓
2	99.8 O.K.	18	101.2 ✓
3	101.5 ✓	19	101.2 ✓
4	99.8 ✓	20	100.9 ✓
5	99.8 ✓	21	99.9 ✓
6	100.1 ✓	22	99.8 ✓
7	99.8 ✓	23	100.1 ✓
8	100.2 ✓	24	100.2 ✓
9	100.6 ✓	25	100.2 ✓
10	99.5 ✓	26	✓
11	100.3 ✓	27	✓
12	✓	28	100.8 ✓
13	100.0 ✓	29	100.4 ✓
14	101.0 ✓		
15	101.4 ✓		
16	102.0 ✓		

(1-4-49) Observation terminated Discarded