

150
MONKEYS ∇

ISOPLOSMOCID + POLIO IN MONKEYS

EXP. V

12-23-1948

- Purpose - 1) Repeat test on effect of 24 mg. base/kilo/day given for 4 days before virus and 4 days after (total 8 days).
Variation - drug will be given 3x a day (8, 8+12mg) instead of 2x (12 and 12)
- 2) Effect of 16 mg base/kilo/day given for 4 days before virus and if possible for 6 days after
- a) without penicillin
 - b) with aqueous penicillin 3x a day
 - c) with procain penicillin 1x a day.

Group I - CONTROLS - VIRUS ONLY - 4⁵ monkeys

✓1072 ₄	4 #	= 1812
✓1073 _x	6 #	= 2718
✓1175	3 1/2 #	= 15855
✓1182	4 1/2 #	= 20385
✓1183	5 1/2 #	= 23725

GROUP II - 24 mg base/kilo/day 8mg, 8mg + 12mg - 6 monkeys

	lbs	Kg	8mg	12mg	9AM + 3PM	9 PM
✓1184	7 1/2 #	= 3.3975	20.3850	40.77	2.04 + 17.96	4.08 + 15.92
✓1185	8 3/4 #	= 3.96375	23.78	47.56	2.38 17.62	4.76 15.24
✓1186	5 1/2 #	= 2.4915	14.9490	29.8980	1.49 18.51	2.99 17.01
hemorrhage ✓1187	9 1/2 #	= 4.3035	25.8210	51.6420	2.58 17.42	5.16 14.84
✓1188	6 3/4 #	= 3.05775	18.3465	36.6930	1.83 18.17	3.67 16.33
✓1189	8 #	= 3.624	21.744	43.488	2.17 17.83	4.35 15.65

GROUP III - 16 mg base/kilo/day - 4mg, 4mg, 8mg - 10 monkeys

		4mg	8mg			
✓1190	7 #	= 3.171	12.684	25.368	1.27 + 18.73	2.54 + 17.46
✓1191	6 #	= 2.718	10.872	21.744	1.09 18.91	2.17 17.83
✓1192	5 1/2 #	= 2.4915	9.966	19.932	1.00 19.00	2.00 18.00
✓1193	6 1/2 #	= 2.5368	10.1472	20.2944	1.01 18.99	2.03 17.97
✓1194	6 1/2 #	= 2.5368	10.1472	20.2944	1.01 18.99	2.03 17.97
✓1195	6 3/4 #	= 3.05775	12.2310	24.4620	1.22 18.78	2.45 17.55
✓1196	5 3/4 #	= 2.60475	10.4190	20.8380	1.04 18.96	2.09 17.91
✓1197	4 1/2 #	= 2.0385	8.1540	16.3080	0.81 19.19	1.63 18.37
✓1198	5 3/4 #	= 2.60475	10.4190	20.8380	1.04 18.96	2.08 17.92
✓1199	5 #	= 2.265	9.060	18.120	0.90 19.10	1.81 18.19

7/10 toxicity

GROUP IV - 16 mg. base/kilo/day - 4mg, 4mg, 8mg + Aqueous Penicillin 100,000 U 3x a day

5 monkeys ✓1200	6 1/2 #	= 2.8525	11.3250	22.65	1.13 + 18.87	2.26 + 17.74
✓1201	5 1/2 #	= 2.4915	9.9660	19.9320	1.00 19.00	1.99 18.01
✓1202	5 3/4 #	= 2.37825	9.51300	19.0260	0.95 19.05	1.90 18.10
✓1203	5 1/2 #	= 2.4915	9.9660	19.9320	1.00 19.00	1.99 18.01
✓1204	4 3/4 #	= 2.15175	8.6070	17.2140	0.86 19.14	1.72 over 18.28

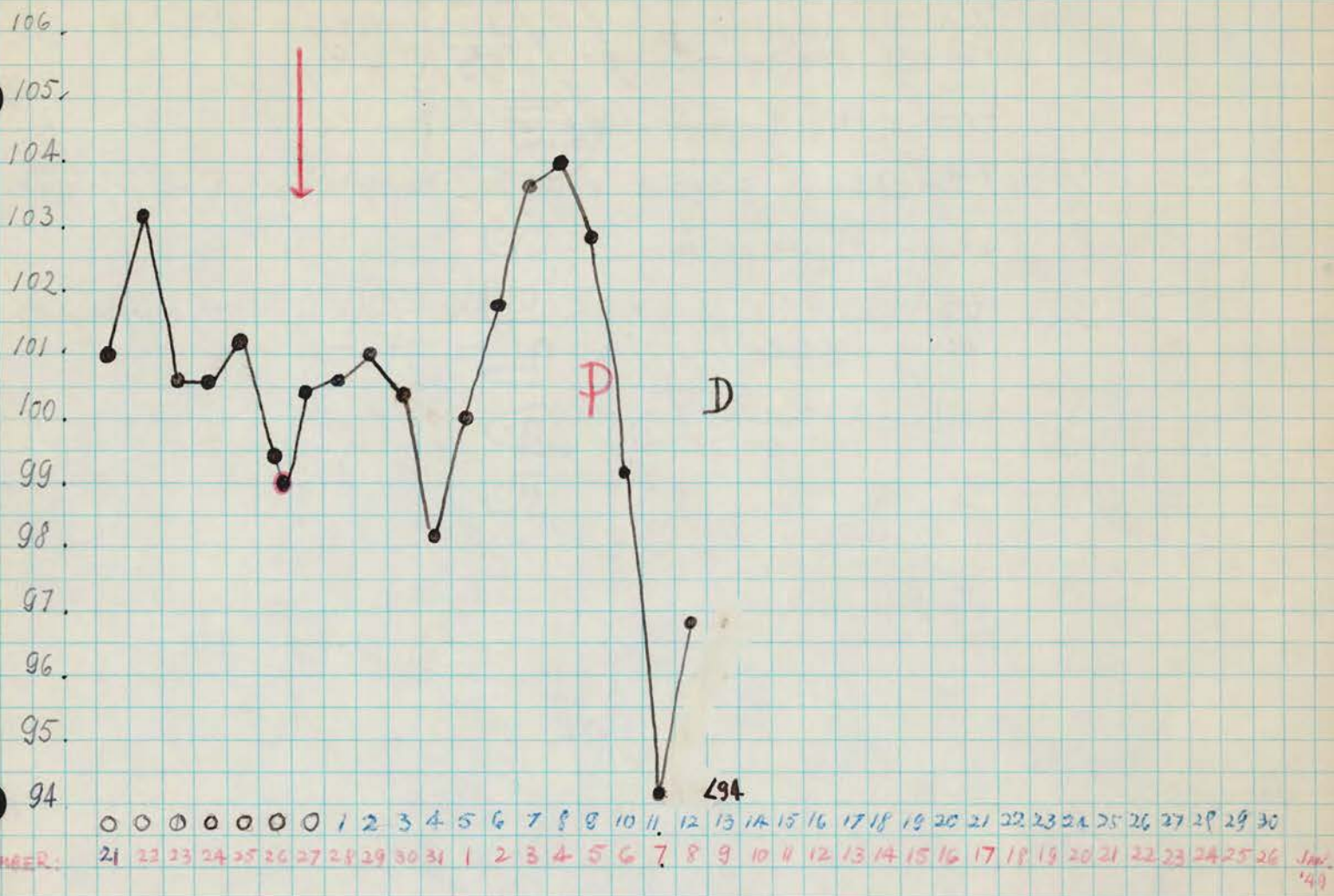
GROUP V - 16 mg. base/kilo/day - 4mg, 4mg, 8mg - Procain penicillin
300,000 U 1x adas

	Procain GM.	4mg	8mg	9AM + 3PM		9PM	
				S.S.	D.W.	monkeys	D.W.
✓ 1205	4 1/4 # = 1.92525	7.70100	15.4020	0.77	+ 19.33	1.54	+ 18.46
✓ 1206	4 1/2 # = 2.0385	8.1540	16.3080	0.82	19.18	1.63	18.37
✓ 1207	7. # = 3.171	12.684	25.368	1.27	18.73	2.54	17.46
✓ 1208	6 1/2 # = 2.9445	11.7780	23.5560	1.18	18.82	2.36	17.64
✓ 1008x	4. # = 1.812	7.248	14.496	0.72	19.28	1.45	18.55

stock solution contains: 10 mg base / c.c. —

DRUG STARTED: DECEMBER 23 - 1948 —

RH. 1072 x - CONTROL, VIRUS ONLY



DECEMBER.

- 23 - O.K.
- 24 - O.K.
- 25 - O.K.
- 26 - O.K.
- 27 - VIRUS.
- 28 - 11 AM - O.K.
- 29 - 8:30 " - O.K.
- 30 - 8:30 " - O.K.
- 31 - 8:30 " - O.K.

JANUARY, 1949.

- 1 - O.K.
- 2 - O.K.
- 3 - O.K.
- 4 - ~~TANG~~ Cifed
2:30 PM - Grammar
- 5 - 10 AM Partial paralysis both lowers.
- 6 - 8:30 AM: Prostrated - Complete paralysis

JAN. 6 - 8:30 AM.

both lowers - Partial paralysis
left upper. Back paralyzed -
Can move head. -

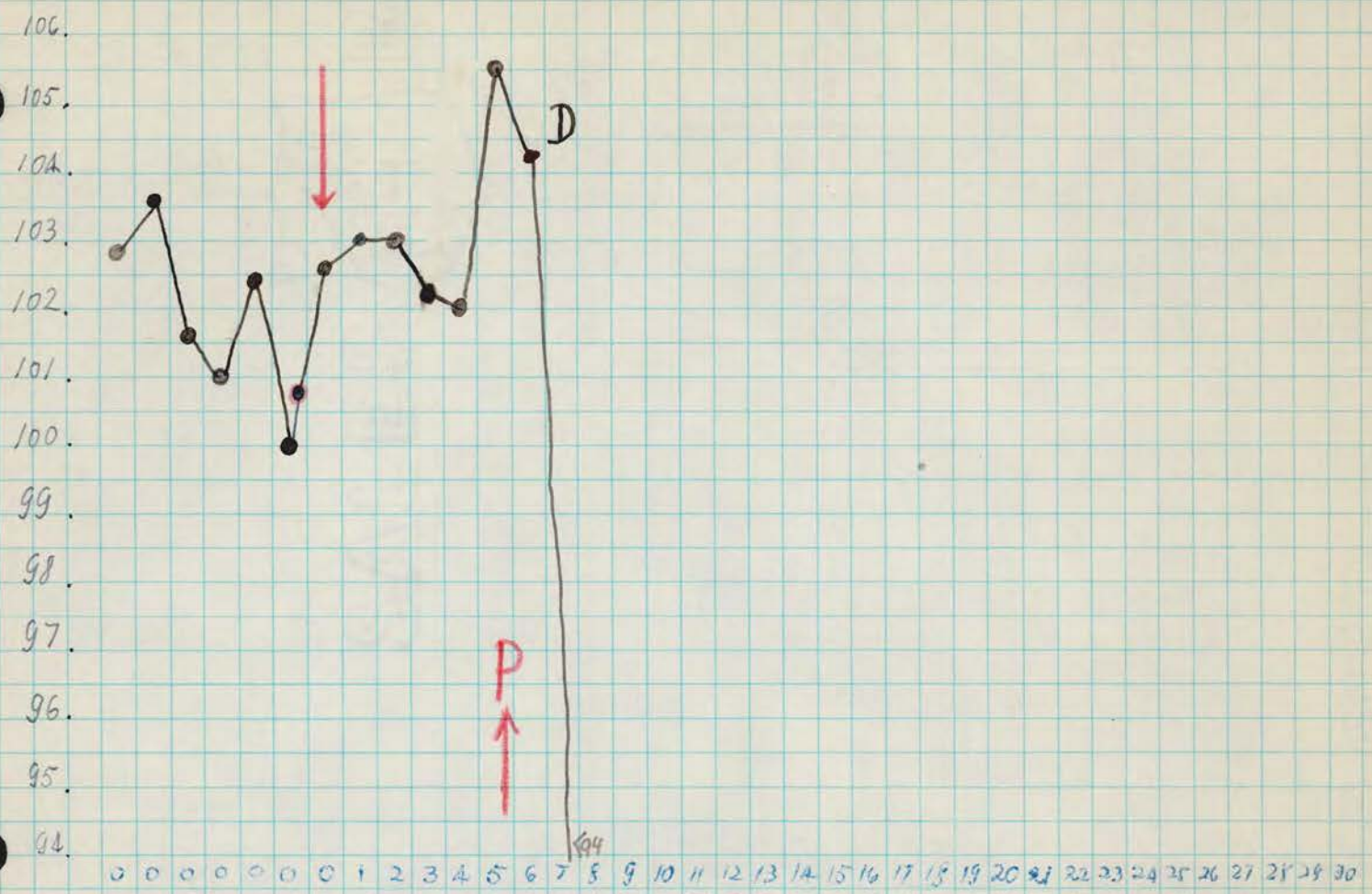
L 4.00 PM - Completely prostrated. -

" 7 - 7:45 AM. Same condition - Very slow respiration.

" 8 - Same condition. -

" 9 - To day, cannot move head. Prostrate,
very weak respiration movements.

" 8:15 PM - Dead - No rigor
NO AUTOPSY



DECEMBER: 21 22 23 24 25 26 27 28 29 30 31 1 2 3 4 5 6 7 8 9 10 11 12 13 14 15 16 17 18 19 20 21 22 23 24 25 26 27 28 29 30 JAN. '49.

DECEMBER

- 23 - O.K. -
- 24 - O.K.
- 25 - O.K.
- 26 - O.K.
- 27 - VIRUS:
- 28 - O.K.
- 29 - O.K.
- 30 - O.K.
- 31 - O.K.

JANUARY - 1949

- 1 - 10 AM: Excited, Lornat. - 5 PM - ^{Marker tremor; weakness} Comp. flaccid paralysis left upper; weak both lowers cannot climb
- 2 - noon Paralysis both uppers - head drop - weakness lowers
- 6:00 PM: Partial paralysis all four extremities
- 10:00 PM: Prostrated, cannot get up, Quadriplegia + back and neck also paralyzed.

3-9 AM - Complete flaccid quadri-
plegia, back and neck also
paralyzed.

11³⁰ AM - Dead, warm, no rigor.

Autopsy: 5³⁰ PM. -

Visura: Not gross pathological
changes.

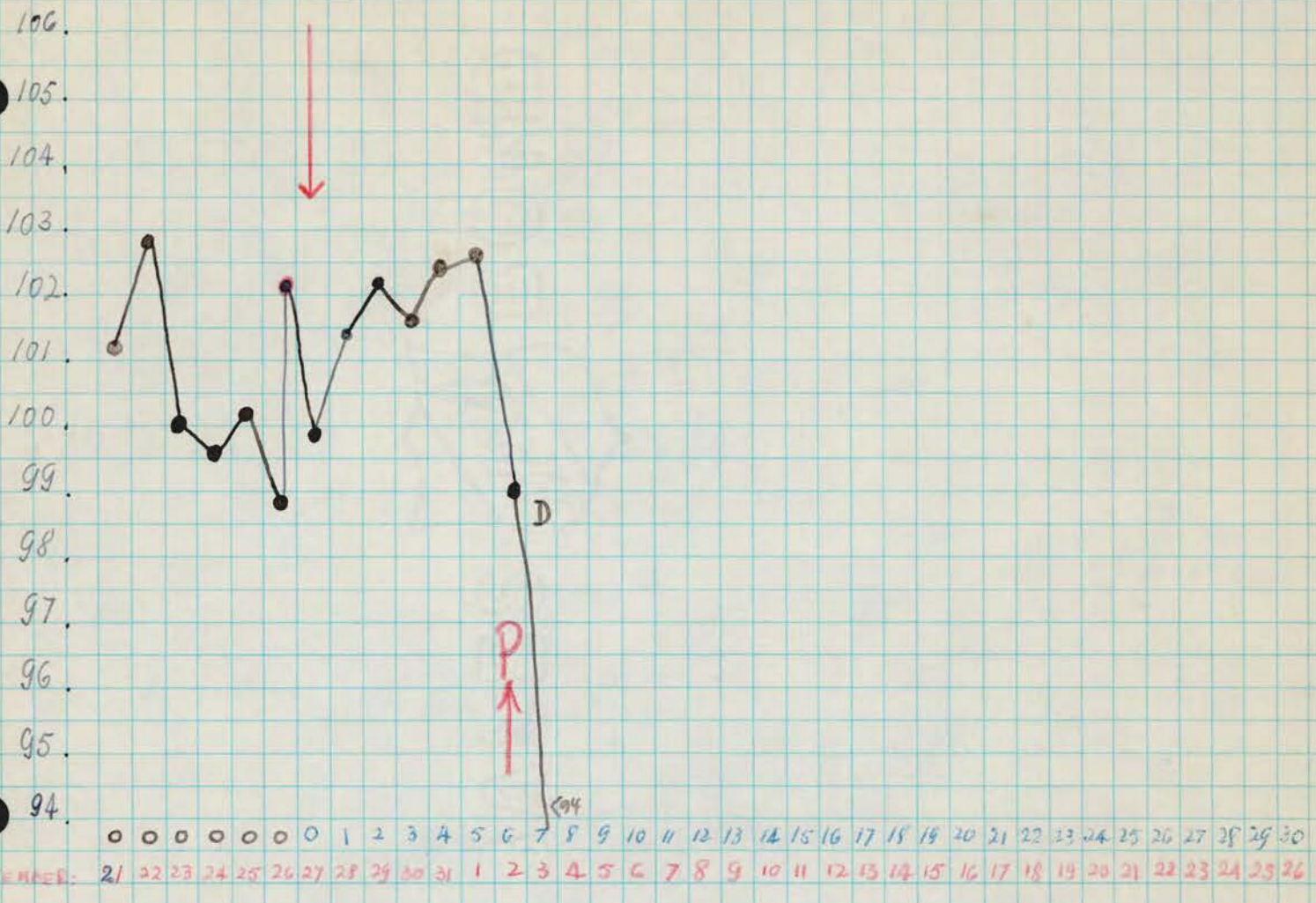
CNS → M. A. -

RH 1175

CONTROL

VIRUS ONLY

Influenza: 12/20/48
for Exp. V



DECEMBER

- 23 - O.K.
- 24 - O.K.
- 25 - O.K.
- 26 - O.K.
- 27 - VIRUS:
- 28 - O.K.
- 29 - O.K.
- 30 - O.K.
- 31 - O.K.

JANUARY 1949.

- 1 - ^{+5PM} 10 AM Excited - Tremor - Pilomotor.
- 2 - Noon - Partial paralysis both lowers - partial left upper and back muscles - lies down on cage floor.
- 6 PM - Lying down, completely prostrated. Almost complete flaccid quadriplegia - Back muscles and also neck paralyzed. Aphonia.
- 10 PM - Same condition.
- 3 - 9 AM - Complete flaccid quadriplegia. + Back and neck also paralyzed.

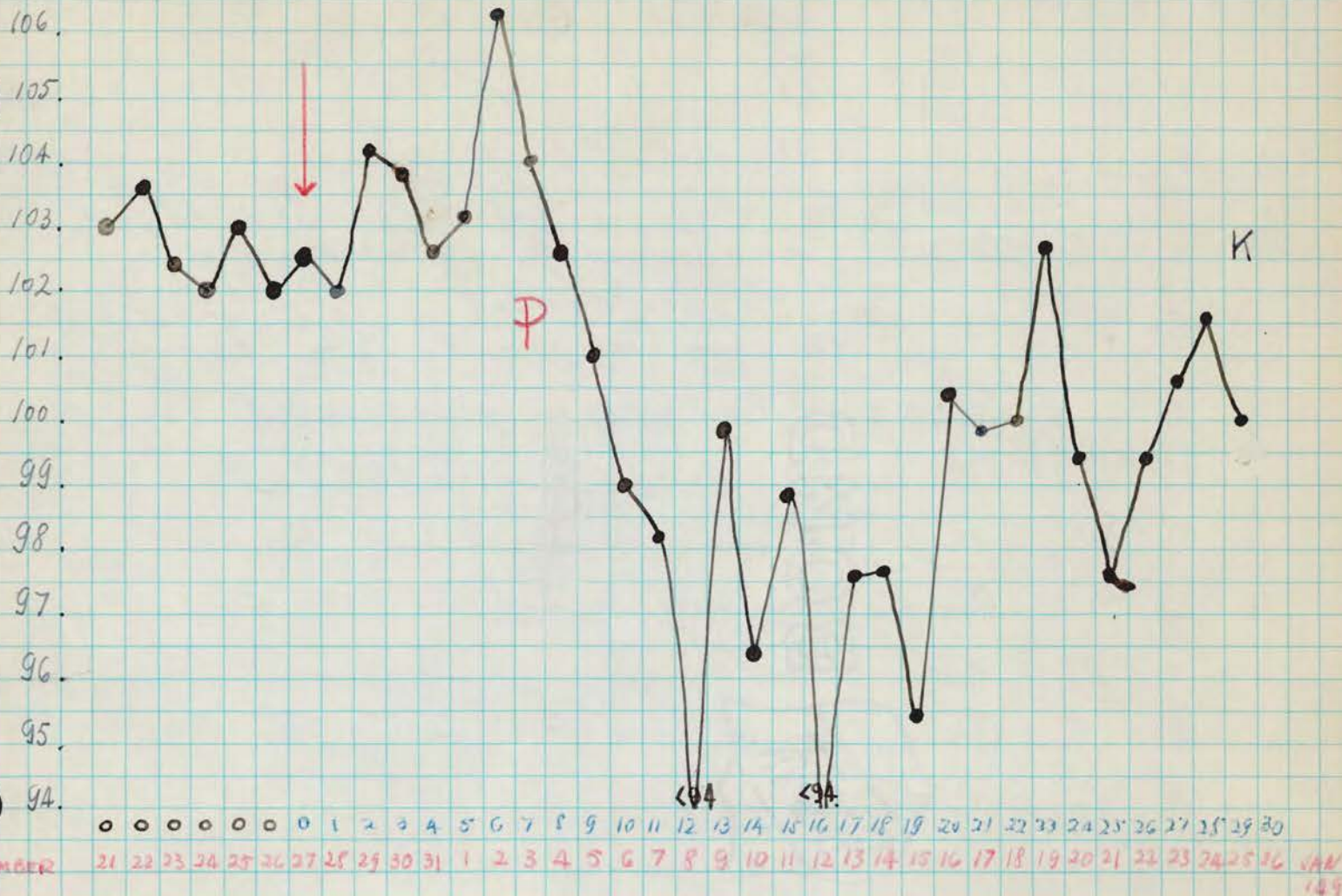
JANUARY.

3 - 11¹⁰ PM - Dead - No rigor.
NO AUTOPSY.

RH 1152

CONTROL VIRUS ONLY

Toxoplasma control exp 11/23/48

DECEMBER

23 - O.K.
 24 - O.K.
 25 - O.K.
 26 - O.K.
 → 27 - VIRUS!
 28 - O.K.
 29 - O.K.
 30 - O.K.
 31 - O.K.

JANUARY 1949.

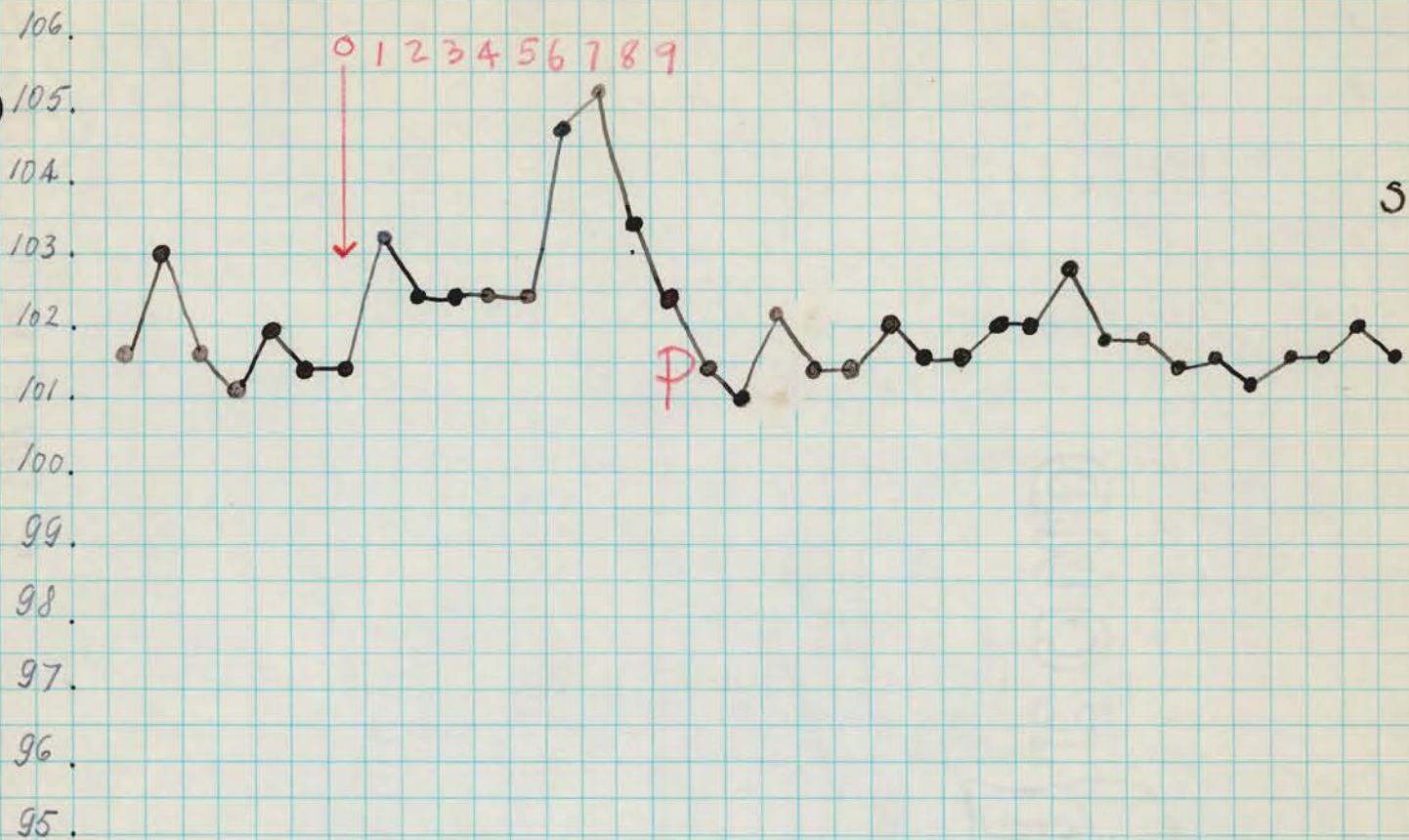
1 - 10 AM - O.K.
 2 - Noon - excited, tremor
 6 PM - same condition.
 3 - 9 AM - Partial paralysis right lower
 11¹⁰ PM - Partial paralysis both lower
 and right upper.
 4 - 7 AM - Complete flaccid paralysis right
 upper - Partial (almost complete)

--- JANUARY.

- 4 - 7 AM - paralysis both lower
and back. - prostrated.
4 PM - partial paralysis all four
extremities.
- " 5 - 9 AM - Complete quadriplegia but
some movements on left upper.
Neck not paralyzed.
4 PM - Completely prostrated.
- " 6 - 8³⁰ AM - Complete flaccid quadriplegia
Can move head, back also paralyzed.
4.00 PM - Completely prostrated.
- " 7 - 7⁴⁵ AM - Prostrate, move head.
- " 8 - Prostrate, some movements of head.
- " 9 - Cannot move head.
- " 10 - Not change.
- " 11 - Same as before. -
- " 12 - Not change.
- " 13 - Not change.
- " 14 - Same as yesterday.
- " 15 - Not change.
- " 16 - Not change.
- " 17 - Same as before.
- " 18 - Not change.
- " 19 - Same as before.
- " 20 - Not change.
- " 21 - Not change.
- " 22 - Same as before. -
- " 23 - Not change.
- " 24 - Same as before. -
- " 25 - Not change.
Killed - No AUTO PSY. -

RH. 1153 - CONTROL VIRUS ONLY

Imp. ...



0 0 0 0 0 0 0 1 2 3 4 5 6 7 8 9 10 11 12 13 14 15 16 17 18 19 20 21 22 23 24 25 26 27 28 29 30

DECEMBER: 21 22 23 24 25 26 27 28 29 30 31 1 2 3 4 5 6 7 8 9 10 11 12 13 14 15 16 17 18 19 20 21 22 23 24 25 26 27 28 29 30 31

DECEMBER

- 23 - O.K.
- 24 - O.K.
- 25 - O.K.
- 26 - O.K.
- 27 - VIRUS:
- 28 - O.K.
- 29 - O.K.
- 30 - O.K.

JANUARY 1949

- 1 - 10 AM - O.K.
- 2 - Noon - excited
- 3 - Excited.
- 4 - 7 AM - Excited.
2:30 - tremor.
- 5 - 10 AM - partial paralysis both lowers.
4 PM - same condition.
- 6 - 8:30 AM - same condition. Can sit up.
4:00 PM - Not change.

JAN. 7 - 7⁴⁵ AM: Partial paralysis
both lowers. -

" 8 - Not change - can sit up.

" 9 - Same as before.

" 10 - Not change.

" 11 - Same condition. -

" 12 - Same condition. -

" 13 - Not change. -

" 14 - Same as yesterday.

" 15 - Not change.

" 16 - Not change.

" 17 - Same as before.

" 18 - Not change. -

" 19 - Same as before.

" 20 - Not change.

" 21 - Not change.

" 22 - Same as before.

" 23 - Not change. -

" 24 - Not change.

" 25 - Same as before.

Sacrificed - no gross pathological
changes on viscera.

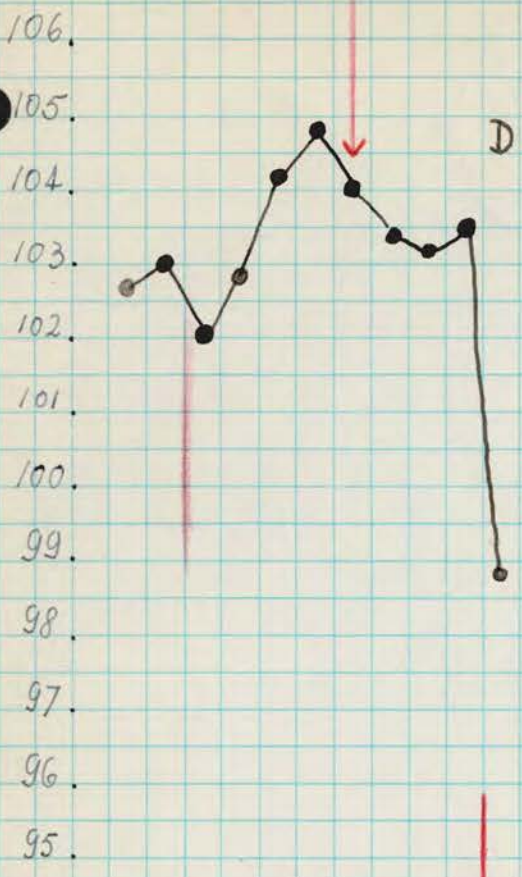
O.N.S. in Z.A.

RH 1154

24 mg base / K. to / day

6, 6 + 12 - no penicillin

NO POLIO



DRUG DISCONTINUED

0 0 1 2 3 4 0 1 2 0 4 5 6 7 8 9 10 11 12 13 14 15 16 17 18 19 20 21 22 23 24 25 26 27 28 29 30

DECEMBER 21 22 23 24 25 26 27 28 29 30 31 1 2 3 4 5 6 7 8 9 10 11 12 13 14 15 16 17 18 19 20 21 22 23 24 25 26 JAN 1 1949

DECEMBER

- 23 - O.K.
- 24 - O.K.
- 25 - O.K.
- 26 - Not very active.
- 27 - **VIRUS:**

- 28 - hunched - right brow, eye and face, red and swollen at site of injury.
- 29 - 8:30 AM - ~~the~~ whole face swollen; otherwise strong
- 30 - Face swollen, red. Eyes closed. sits up hunched.
- 31 - 11:40 AM - dead - Immediate proflusion - no fixation on lumbar enlargement. Poor on urethral catheter.

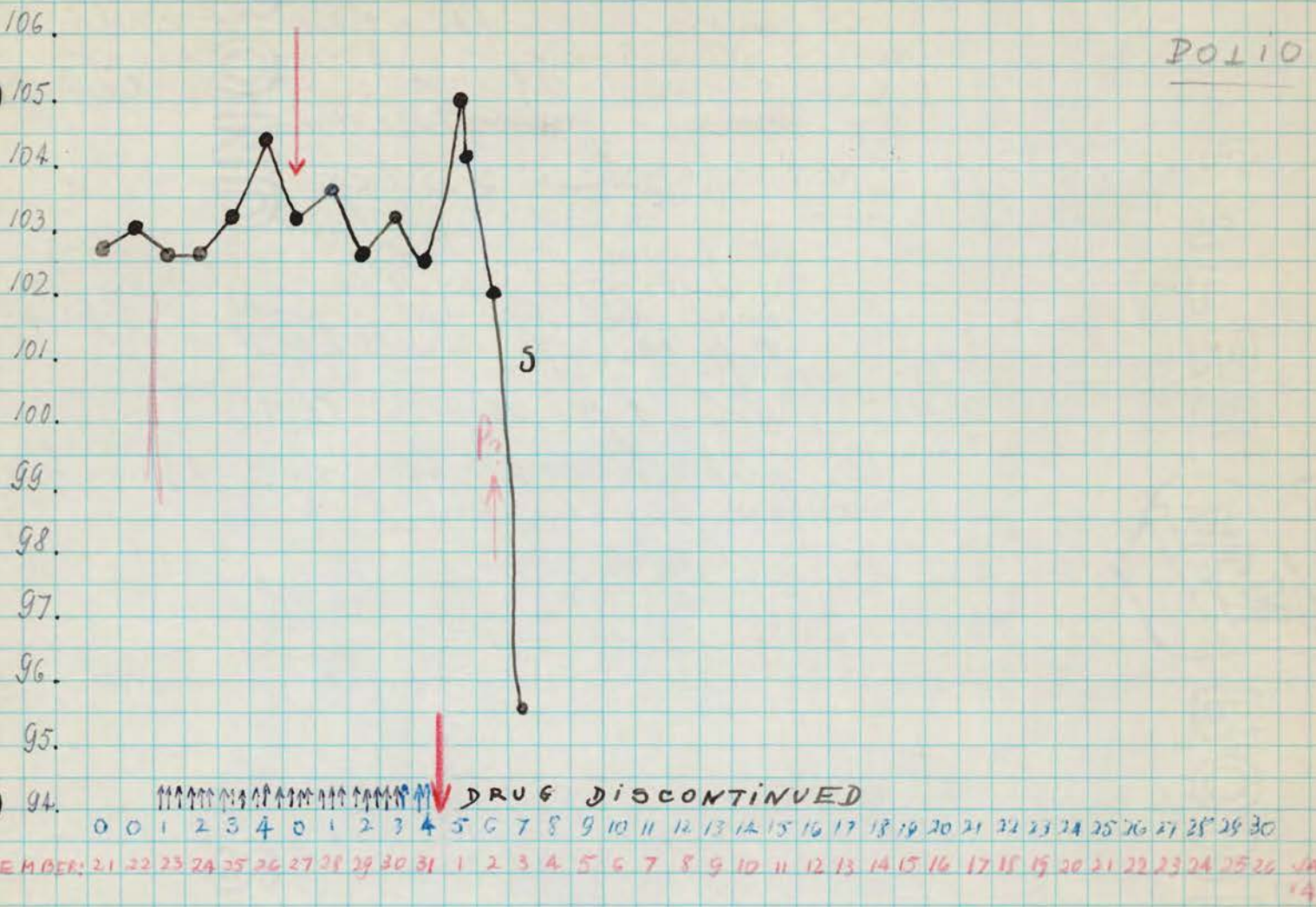
Viscera: Spleen enlarged.
 Lungs: Edema - Some atelectatic zones. Infarct (hemorrhagic) on lower lobe, left lung. Adherences on base of the same lobe to diaphragm.

CNS → L.A → EMO.

RH 1185

2.4 mg base / K. w/ day

POLIO



DECEMBER

- 23 - O.K.
- 24 - O.K.
- 25 - O.K.
- 26 - Somewhat thin - Hunched over
- 27 - Same condition -

VIRUS:

- 28 - O.K.
- 29 - O.K.
- 30 - O.K.
- 31 - O.K.

JANUARY 1949

- 1 - 10 AM - Excited.
- 2 - Noon - Hunched - partial uppers and tremors of head
Cannot be too definite, however, without histology - however, clinically looks like polio
- 3 - Prostrate
3.30 PM - Sacrificed - Shed - Autopsy: Sterile
(over)

JANUARY

Viscera: left lung, extensive
adhesions at thoracic wall
and diaphragm. Some clear
fluid in left pleural cavity
by and pericardium.

CNS: (Skull autopsy)

2 1 cm of ^{each} ~~each~~ enlarge-
ments of spinal cord, on
tube. In ^{sub}cord, frozen, plus
1 piece of medulla.

Set up at: B-8-1

Another segment of C.N.S.
as routine, on L.A.

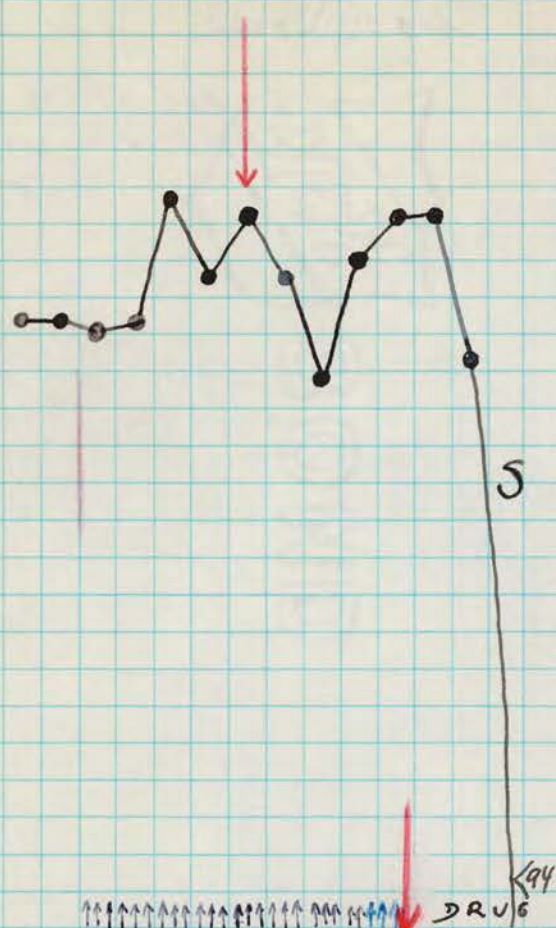
RH 1157

2.4 mg base / cc / day

GROUP II, Diphasmation Expt of 12/23/48

POLIO

106.
105.
104.
103.
102.
101.
100.
99.
98.
97.
96.
95.
94.



Focal acute, polio neuronal lesions in spinal cord + medulla.

Symptoms and death most likely due to drug
← not polio

DRUG DISCONTINUED

DECEMBER 21 22 23 24 25 26 27 28 29 30 31 1 2 3 4 5 6 7 8 9 10 11 12 13 14 15 16 17 18 19 20 21 22 23 24 25 26 27 28 29 30 31 JAN 1 2 3 4 5 6 7 8 9 10 11 12 13 14 15 16 17 18 19 20 21 22 23 24 25 26 27 28 29 30 31

DECEMBER

- 23 O.K.
- 24 O.K.
- 25 O.K.
- 26 Not very active.
- 27 Hunched over. -

VIRUS:

- 28 O.K. but not very active. -
- 29 - 8:30 AM - O.K.
- 30 O.K.
- 31 -

JANUARY 1949

- 1 - O.K.
- 2 - General weakness cannot climb. Cannot make out local paralysis. Hunched
- 3 - Prostrate
- 4 PM - Sacrificed - Bled - Steril autopsy. a 1cm of lumbar and cervical intat gambt, + 1 piece of medulla, in Hulse, to frozen at B.S.I. - Other segments, as routine, in Z.A.

VANUARY

3

Viscera:

Spleen enlarged.

Lungs: left lower lobe
hypersized.

Otherwise, not other gross
pathological changes.

JANUARY

3

of humerus and 1 cm. of
choroid enlargement + 1
piece of medulla, frozen, at:

B-8-1 - others, on F.A.

Viscera: Lungs do not collapse,
uniform pink color.
Fluid in pleural and
pericardial cavities.

Note: Scar of old injury at left side of
occipital bone.

JANUARY

12

2M - 1 piece of spinal cord
+ 11. piece of medulla = 1GM
in saline. - and 1/100

prepared for inoculation

5PM - This material was inoculated
to the monkeys 1076x and 1077x
at 1/12/49. - ~~96~~

Rh 1076x : 1 c.c. 10^{-2} intracerebrally.

Rh 1077x : 1 c.c. 10^{-1} intracerebrally.

" 13 - Suspension remained, frozen, at.

B-8-2.

" 24 - 1cc. of 10^{-3} was inoculated to
Rh. 1066x

Rh. 1077 ✓

Rh. 1188 - 10⁻¹ - 1/12/49

106.

105.

104.

103.

102. ●

101. P

100.

99.

98.

97.

96.

95.

94.

1 2 3 4 5 6 7 8 9 10 11 12 13 14 15 16 17 18 19 20 21 22 23 24 25 26 27 28 29 30

JANUARY 13 14 15 16 17 18 19 20 21 22 23 24 25 26 27 28 29 30 1 2 3 4 5 6 7 8 9 -

JANUARY 12 - 1949.

5 PM - This monkey was inoculated with a suspension of medulla and spinal cord from the monkey Rh. 1188 (Zeplasmoid + Hoyerkamp's Experiment V of December 23, 1948) in saline: 10⁻¹, intracerebrally: 1 c.c.

" 13_ O.K.

" 14_ O.K.

" 15_ O.K.

" 16_ O.K.

" 17_ O.K.

" 18_ Partial paralysis both lower.

" 19_ Same condition. -

- JAN VARY - 20 - Paralysis both lowers.
 Partial paralysis on back. -
 Can set up
- " 21 - Prostrate Complete paralysis
 both lowers and back
 Partial paralysis both upper
 no neck paralysed.
- " 22 - Same as before.
- " 23 - Not change. -
- " 24 - Not change.
- " 25 - same as yesterday. -
- " 26 - Same as before. -
- " 27 - Same condition
- " 28 - Same as before.
- " 29 - Not change.
- " 30 - Not change.
- " 31 - Not change.
- FEB - 1 - Same condition
- " - 4 - Not change.

Rh. 1076 x

Rh. 1188-10⁻² - 1-12-'49

106.

105.

104.

103.

102.

101.

100.

99.

98.

97.

96.

95.

94.

P

1 2 3 4 5 6 7 8 9 10 11 12 13 14 15 16 17 18 19 20 21 22 23 24 25 26 27 28 29 30

JANUARY 13 14 15 16 17 18 19 20 21 22 23 24 25 26 27 28 29 30 31 1 2 3 4 5 6 7 8 9

JANUARY 12 - 1949.

5 PM - This monkey was inoculated with a suspension of medulla and spinal cord from the monkey Rh. 1188 (Isoplaomond + Hofitkamp, ~~6/10~~ V, of December 23, 1948) in saline 10⁻², intracerebrally, 1 cc. -

" 13 - O.K.

" 14 - O.K.

" 15 - O.K.

" 16 - O.K.

" 17 - O.K.

" 18 - O.K.

" 19 - 8 AM - tremor.
4 PM - tremor - pale

" 20 - 9 AM - disinclined to climb - easily exhausted -

JAN. 20 Questionable paralysis on his left hand. Tremor on shoulders and arms. Very pale. -

" 21 - Partial paralysis both lower and back - marked weakness on left upper. -

" 22 - Back: partial paralysis - but can sit up. -

" 23 - Not change. -

" 24 - Same as before. -

" 25 - Cannot sit up. -

" 26 - Not change. -

" 27 - Same condition. -

" 28 - " "

" 29 - " "

" 30 - Same condition. -

" 31 - Not change. Same condition. -

FEB. 1 - Same condition. -

" A - Not change. -

Rh. 1066 X

Josephson & G. V. of 12/23/48

RH 1188 : 10⁻³

- 106 •
- 105 •
- 104 •
- 103 •
- 102 •
- 101 •
- 100 •
- 99 •
- 98 •
- 97 •
- 96 •
- 95 •
- 94 •

P D

1 2 3 4 5 6 7 8 9 10 11 12 13 14 15

24 25 26 27 28 29 30 31 1 2 3

JANUARY '49

- 24 - This monkey was inoculated today PM with 1 cc. (intracerebrally) of 10⁻³ suspension of RH. 1188.
- 25 - O.K.
- 26 - O.K.
- 27 - O.K.
- 28 - O.K.
- 29 - O.K.
- 30 - Filamotor Excited.

→ 31 - 8 AM Partial paralysis, both lower weakness on right upper. Head to the right side. Forepaw mouse both upper when stimulated. Complete paralysis lower.

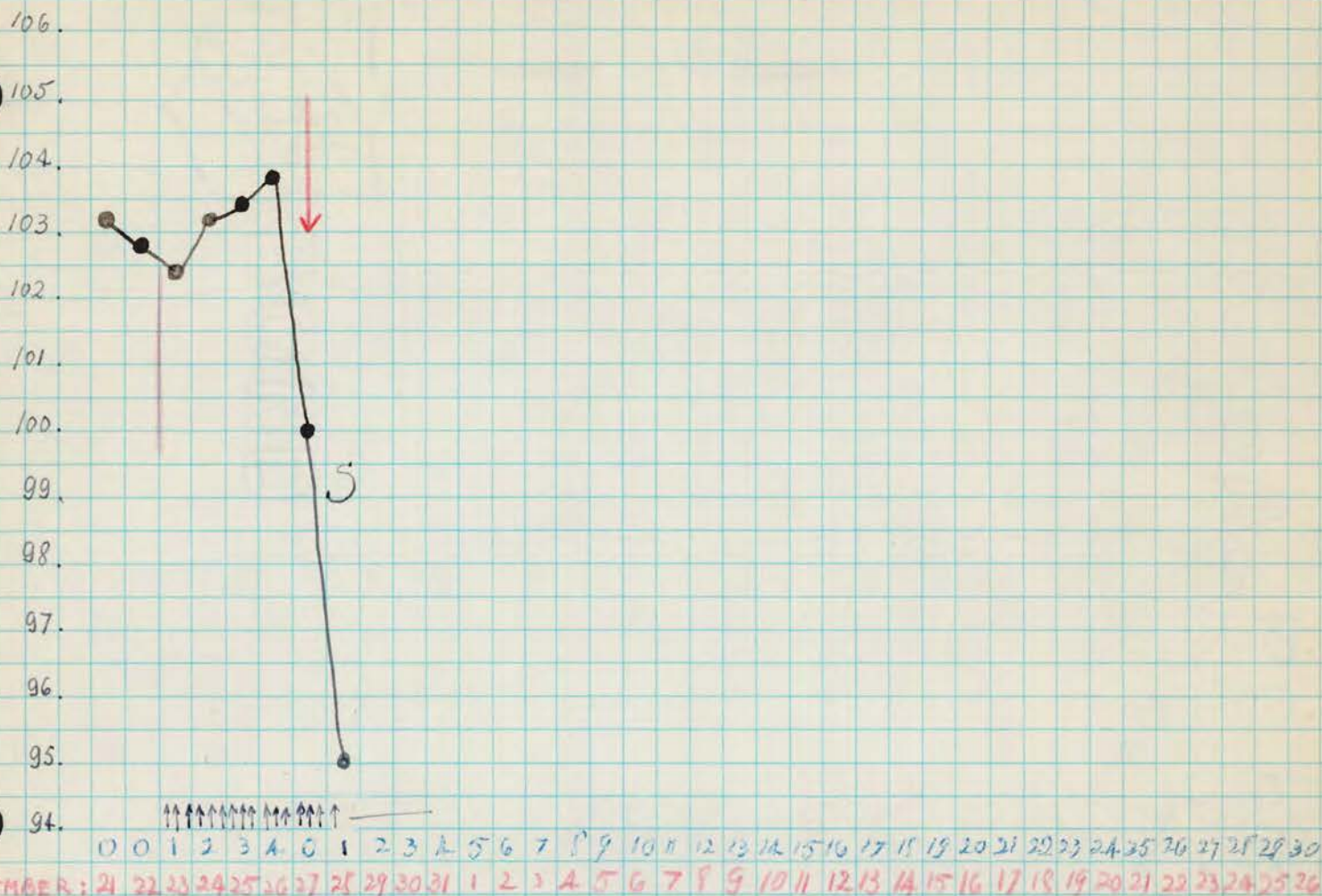
F# 19

FEB - 2 - Complete quadriplegia.

" 3 Paralysis lead -

NO AUTOPSY

RH. 1189 - 24 mg. base/Kg/day - GROUP II, *Trypanosoma* Exp V, of 12/23/48



DECEMBER

23 — O.K.
 24 — O.K.
 25 — O.K.
 26 — O.K.
 → 27 — Hunted over
 VIRUS:

28 (WASH) Prostrate blue - appears terminal - no exterior sign of infection except skin irritation at site of chain on neck.

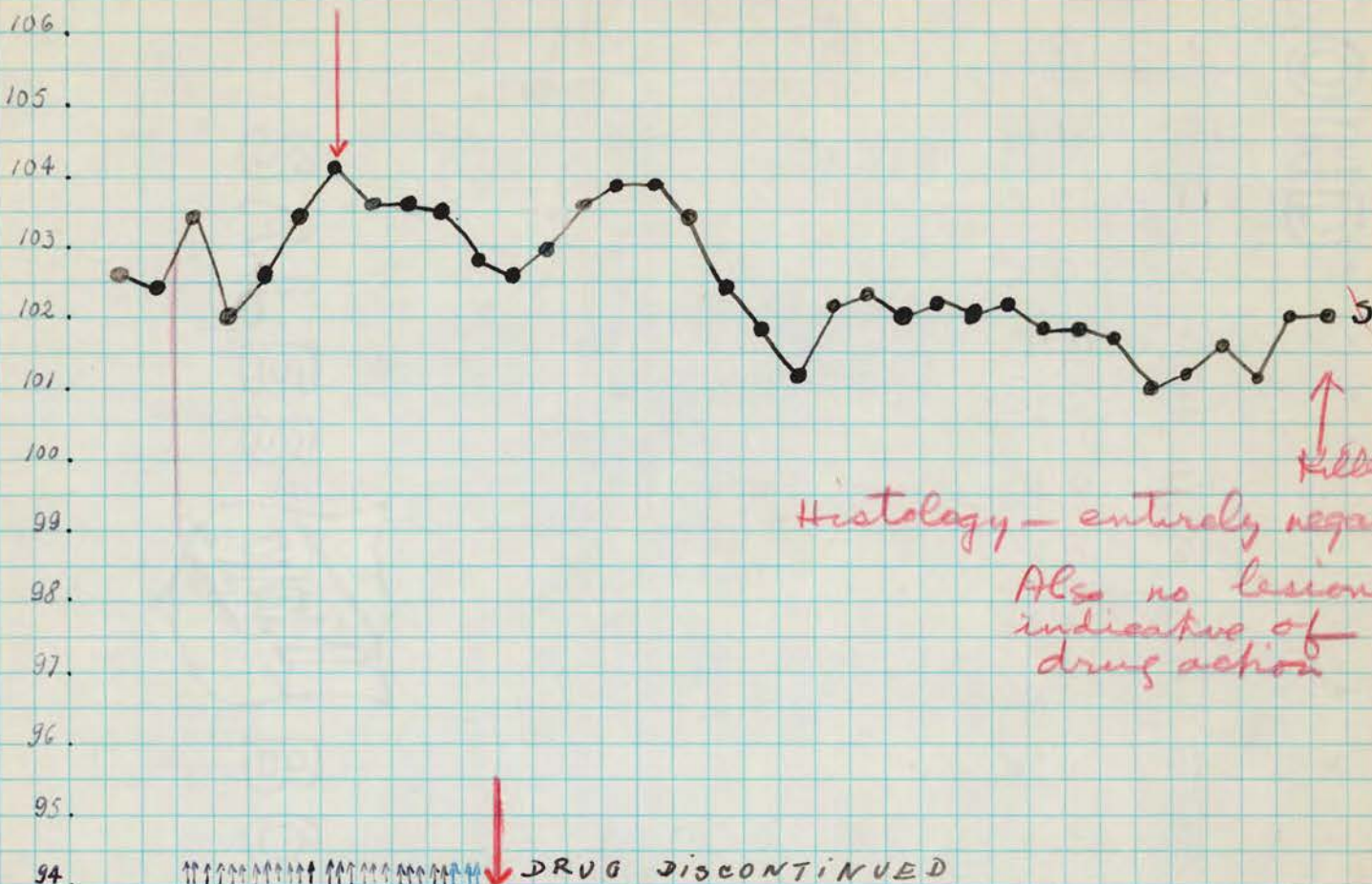
11:50 AM Perfusion before death - Under ether anesthesia, very lightly, bleeding from heart, at 40 cc of blood (syringe 50 cc, needle 16) washing: needle with bulb in ascending aorta, 1500 cc. of saline, 50 cc./minute. Fixation: 1700 cc Saline + 200 cc Formaldehyde + 20 cc A.A. = 2000 cc, at 35 cc/minute.

Viscera: Adhering right pleurae - Pericarditis; lungs, liver, Spleen - OK.

C.N.S.: Good fixation on spinal cord, medulla, mid-brain

RH. 1190

GROUP III, Sarcoplasmic Exp. V of 12/23/48
16 mg base/Kg/day



Histology - entirely negative
Also no lesions indicative of drug action

DRUG DISCONTINUED

0 0 1 2 3 4 0 1 2 3 4 5 6 7 8 9 10 11 12 13 14 15 16 17 18 19 20 21 22 23 24 25 26 27 28 29 30

DECEMBER 21 22 23 24 25 26 27 28 29 30 31 1 2 3 4 5 6 7 8 9 10 11 12 13 14 15 16 17 18 19 20 21 22 23 24 25 26 27 28 29 30 31

DECEMBER

- 23 - O.K.
- 24 - O.K.
- 25 - O.K.
- 26 - O.K.
- 27 - Not very active.
VIRUS
- 28 - O.K.
- 29 - 8:30 AM - O.K.
- 30 - O.K.
- 31 - O.K.

JANUARY 1949

- 1 - 10 AM - O.K.
- 2 - Noon - O.K.
- 3 - O.K.
- 4 - O.K.
- 5 - O.K.
- 6 - 8:30 AM - O.K.
4:00 PM - O.K.
- 7 - 7:45 AM - O.K.

4 PM - O.K.

JAN. 8 - O.K.

" 9 - O.K.

" 10 - O.K.

" 11 - O.K.

" 12 - O.K.

" 13 - O.K.

" 14 - O.K.

" 15 - O.K.

" 16 - O.K.

" 17 - O.K.

" 18 - O.K.

" 19 - O.K.

" 20 - O.K.

" 21 - O.K.

" 22 - O.K.

" 23 - O.K.

" 24 - O.K.

2:30 PM. Short autopsy -
1cm lumbar enlargement.
1cm. cervical enlargement } 10% saline
1 piece of medulla } B.S. 2

1cc. intracerebrally to 1069x
[Spinal cord and medulla (that remained)
+ thalamus + midbrain -> Z.A.]

JAN. 25 - Rh. 1075x was inoculated with
the same suspension.
1cc. intracerebrally. -

Rh. 1069 ✓

Gorplemwood, Exp. V of 12/23/48

107.

106.

105.

104.

103.

102.

101.

100.

99.

98.

97.

96.

95.

Rh 1190 = 10⁻¹

1 2 3 4 5 6 7 8 9 10 11 12 13 14 15

JAN. 24 25 26 27 28 29 30 31 1 2 3 4 5 6 7 8

JANUARY 149.

24 - This monkey was inoculated today PM, with 1 cc. (intracerebrally) of suspension 10⁻¹ in saline, of pool (lumbar enlargement + cervical enlargement + (1 cm. each) + medulla (1 piece)] of Rh 1190

25 - O.K.

26 - O.K.

27 - O.K.

28 - O.K.

29 - O.K.

30 - O.K.

31 - O.K.

4-18-49. O.K.

RH. 1075 ✓

Jacquesmond 612. V of 12/23/48

RH. 1190 = 10⁻¹

106.

105.

104.

103.

102.

101.

100.

99.

98.

97.

96.

95.

94.

1 2 3 4 5 6 7 8 9 10 11 12 13 14 15 16 17 18 19 20 21 22 23 24 25 26 27 28

JAN. 27 28 29 30 31 1 2 3 4 5 6 7 8 9 10 11 12 13 14 15 16 17 18 19 20 21

JANUARY '49.

25

This monkey was inoculated today with suspension of both spinal cord enlargement + medulla, 10⁻¹ of Rh. 1190. 1 c.c. i. cerebrially.

26

O.K.

27

O.K.

28

O.K.

29

O.K.

30

O.K.

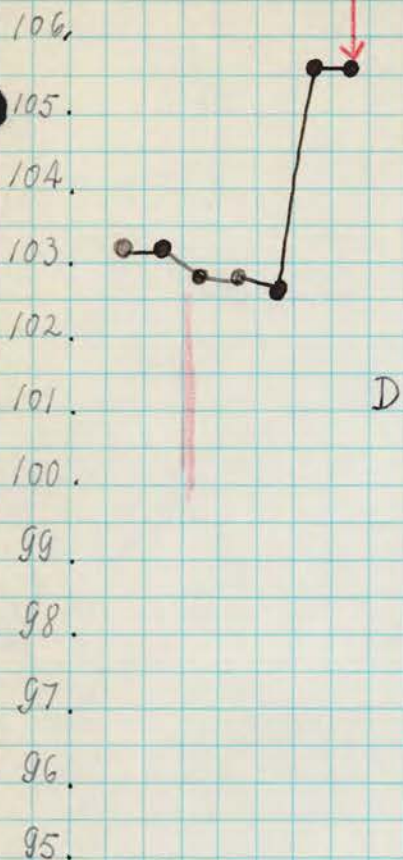
31

O.K.

1-15-49 O.K.

RH 1191

16 mg base/Kg/day



Cells well preserved
No significant chromatolysis
of neurones in oculomotor
nucleus or nucleus.

9A

↑↑↑↑↑↑↑↑↑↑↑↑↑↑↑↑

0 0 1 2 3 4 0 1 2 3 4 5 6 7 8 9 10 11 12 13 14 15 16 17 18 19 20 21 22 23 24 25 26 27 28 29 30

DECEMBER 21 22 23 24 25 26 27 28 29 30 31 1 2 3 4 5 6 7 8 9 10 11 12 13 14 15 16 17 18 19 20 21 22 23 24 25 26 JAN 1 41

- DECEMBER 23 - Some obstruction (spasm?) to the passing of the catheter, on supra-riol esophagus, on all three (3) feedings. Drug given - held down, anyway.
- 24 - 9 - no difficult - Drug given - held down.
- 25 - O.K.
- 26 - O.K.
- 27 - Hunched over.
VIRUS:
- 28 - 8³⁰ AM. Dead
 12⁰⁰ noon autopsy.
 Visura: OK.

CNS: No evidence of inoculation injury

and head. -

4³⁰ Same as before.

JAN - 8 - Can move both upper and head. Thin

" 9 - Same as before.

" 10 - Same: move both upper and head.

" 11 - Not change.

" 12 - Same condition. -

" 13 - Same as before.

" 14 - Not change. -

" 15 - Same as yesterday. -

" 16 - Not change. -

" 17 - Same as before.

" 18 - Not change. -

" 19 - Same condition, but very thin and weak.

" 20 - Not change.

" 21 - Not change.

" 22 - Cannot move head - Neck paralyzed
or much general weakness?
Can move his left upper. - Very thin.

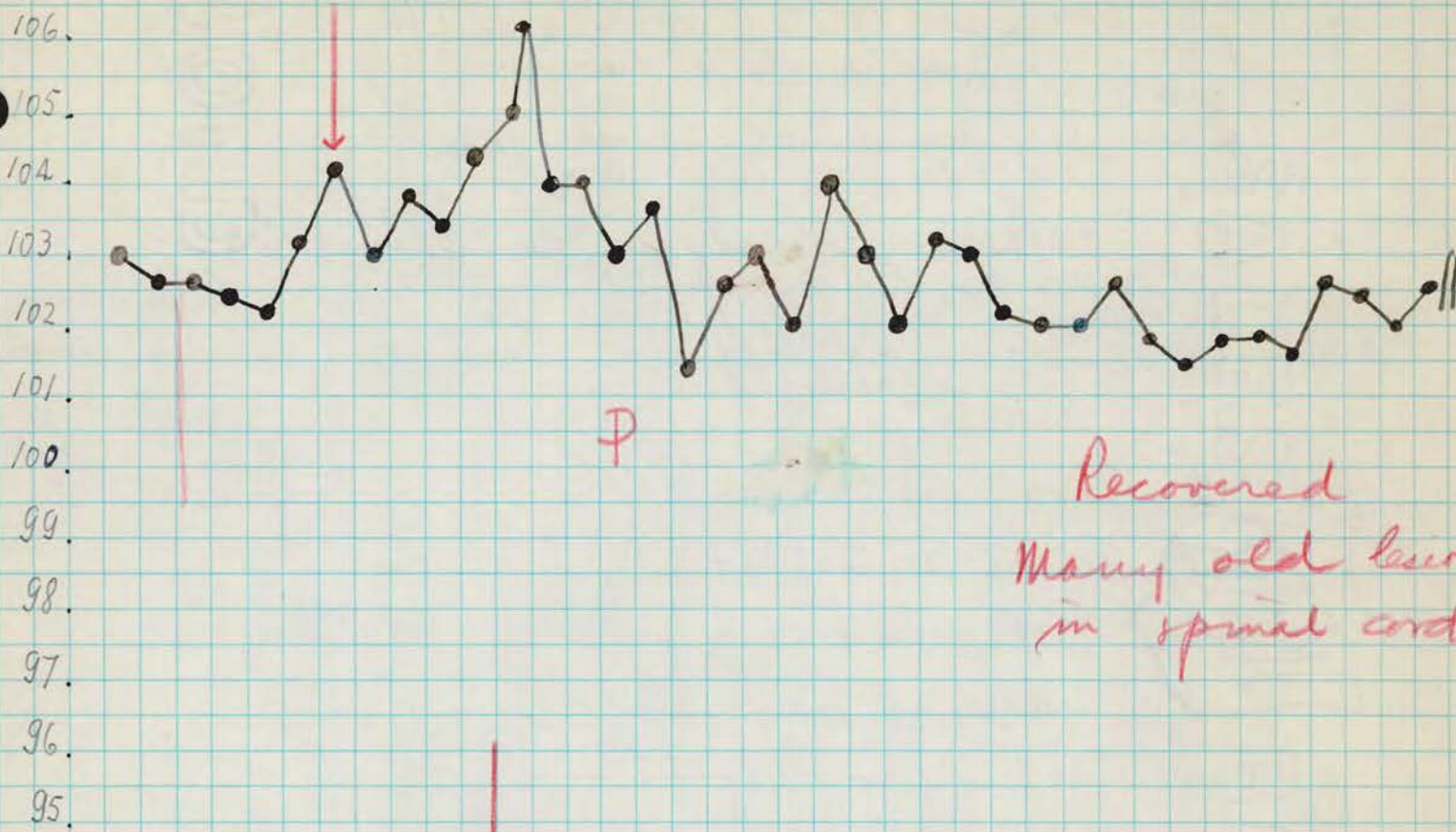
" 23 - Not change.

" 24 - 8³⁰ Dead - Rigor mortis. -

NO AUTOPSY

RH. 1193

GROUP III, Geoplasmodia, Exp V, of 12/23/48
16 mg base / (kilo) / day



Recovered
Many old lesions
in spinal cord

DRUG DISCONTINUED

0	0	1	2	3	4	0	1	2	3	4	5	6	7	8	9	10	11	12	13	14	15	16	17	18	19	20	21	22	23	24	25	26	27	28	29	30	
DECEMBER	21	22	23	24	25	26	27	28	29	30	31	1	2	3	4	5	6	7	8	9	10	11	12	13	14	15	16	17	18	19	20	21	22	23	24	25	26

DECEMBER

23 - O.K.

24 - O.K.

25 - O.K.

26 - O.K.

→ 27 - left corner of his mouth swollen - thin

VIRUS:

28 - O.K.

29 - O.K.

30 - O.K.

31 - O.K.

JANUARY 1949

1 - O.K.; ♀

2 - O.K. except for swollen right eye

3 - 9 AM O.K.
6 PM - Excited.

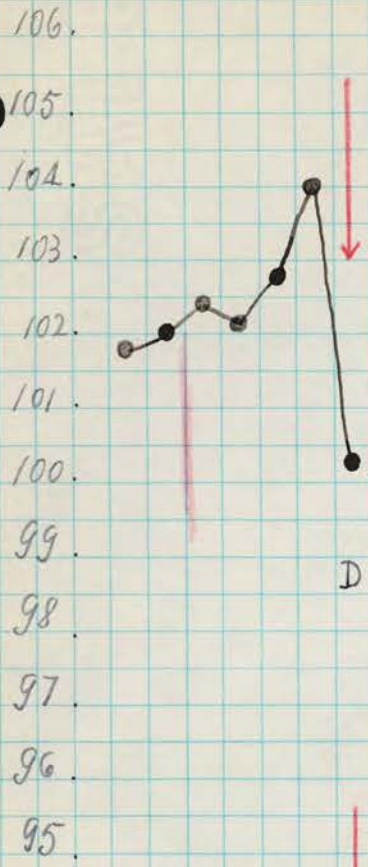
4 - 7 AM - Formor - Excited.
2 PM - Partial paralysis both lower.
Infection on right lower.

5 - 9:00 AM - Same condition.
4 PM - Not change.

- ✓ AN - 6 - 8³⁰ Not change. Can sit up. -
 4.00 PM - Not change. -
- " 7 - 7⁴⁵ AM: Partial paralysis both
 lowers. Infection on right leg, better.
- " 8 - Sit up. Not change. -
 Infection the same. -
- " 9 - Partial paralysis on both lowers
 and left upper. -
- " 10 - Same as before. Can sit up in morning
 all extremities. -
- " 11 - Not change.
- " 12 - Same condition. -
- " 13 - Same as before.
- " 14 - Not change.
- " 15 - Same as yesterday
- " 16 - Not change.
- " 17 - Same as before.
- " 18 - Not change. -
- " 19 - Same condition. -
- " 20 - Not change. -
- " 21 - Same as before. -
- " 22 - Not change. -
- " 23 - Same as before. -
- " 24 - The paralysis on left upper is now
 completely insensate.
 The recovery of the mobility on
 his lowers is almost complete. -
- " 25 - Same as yesterday.
- " 26 - The recovery of mobility is almost
 complete.
- " 27 - Same condition. -
- " 28 - " " "
- " 29 - " " "
- " 30 - " " "
- " 31 - " " "
- FEBRUARY 1 - " " "
- " 4 - " " "

2-10-49.
 2-10-49 - Sacrificed - Bleeding under chloro-
 formic anesthesia.
 Viscera: No gross pathological
 changes. Focus in CNS.

R4 1195 - 16 mg base/ku/day GROUP IV, *S. agalactiae*, Exp. V of: 12/23/48



No neuronal lesions

94. ↑↑↑↑↑↑↑↑↑↑ → DRUG DIS.
 DECEMBER: 21 22 23 24 25 26 27 28 29 30 31 1 2 3 4 5 6 7 8 9 10 11 12 13 14 15 16 17 18 19 20 21 22 23 24 25 26 27 28 29 30 31 JAN '49

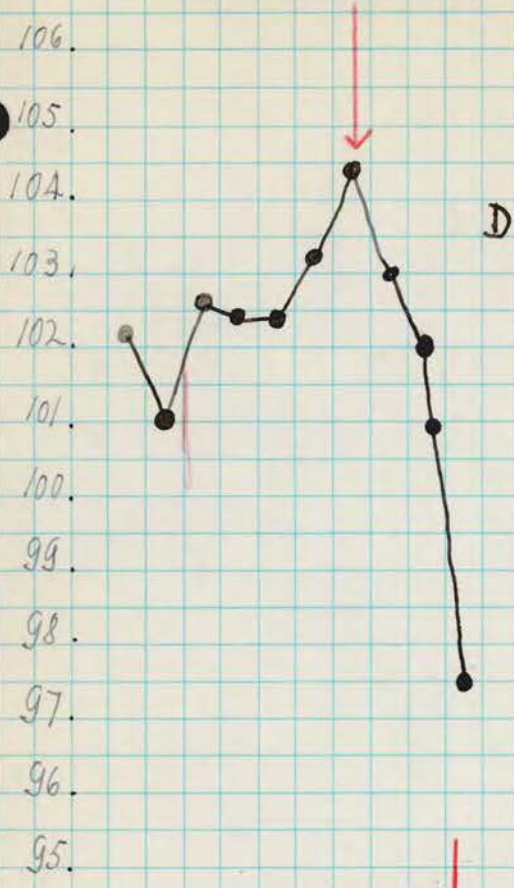
DECEMBER

- 23 - O.K.
 - 24 - O.K.
 - 25 - O.K.
 - 26 - O.K.
 - 27 - 9 AM. Very weak - Cannot climb.
- VIRUS:** given at 12:30 P.M.

" - 3 PM - Dead. Still warm.
 Autopsy at 8:15 PM. Virus: *S. agalactiae* on lungs.
 Lobar pneumonia on left (lower) lobe in L.A.
 C.N.S.: L.A. -
 Clotted blood in ventricles - inoculation injury

R.H. 11.96

GROUP III, Explosomid Exp. V of: 12/23/48
16 mg. base Thio/day



Poor fixation + preservation
 so cannot judge chromatolyses
but from position of nuclei
 in intact cells not
 much eccentricity is
 present.

DRUG DISCONTINUED. -

0 0 1 2 3 4 0 1 2 3 4 5 6 7 8 9 10 11 12 13 14 15 16 17 18 19 20 21 22 23 24 25 26 27 28 29 30

DECEMBER: 21 22 23 24 25 26 27 28 29 30 JAN 1 2 3 4 5 6 7 8 9 10 11 12 13 14 15 16 17 18 19 20 21 22 23 24 25 26 JAN 1 4 9

DECEMBER

- 23 - O.K.
- 24 - O.K.
- 25 - O.K.
- 26 - O.K.
- 27 - has chills over
VIRUS:

- 28 - hunched, otherwise O.K.
- 29 - 8:30 AM - hunched; otherwise O.K.
8:30 PM: 100.9 - drug given
- 30 8:30 AM. Sits up, but weak - no evidence of infection - lies down.
DRUG DISCONTINUED

- 2:20 PM Very weak. Sits up.
- 31 - 8 AM - Dead without autopsy.

Viscera: spleen enlarged.
 edema lungs - Plural adhesions
 on left side, bases. Infarcts on lower lobe,

left side - CNS - Z.A. →

RH 1197

Group III - Isoprenaline, Exp. 12/23/48
16 mg base / 100 g / day



Chromatolysis in oculomotor nuclei
also in medulla

Same change as that seen
in 24mg isoprenaline monkeys.

Good fixation

DRUG DISCONTINUED

0 0 1 2 3 4 0 1 2 3 4 5 6 7 8 9 10 11 12 13 14 15 16 17 18 19 20 21 22 23 24 25 26 27 28 29 30

DECEMBER: 21 22 23 24 25 26 27 28 29 30 31 1 2 3 4 5 6 7 8 9 10 11 12 13 14 15 16 17 18 19 20 21 22 23 24 25 26 Jan. 1 2 3 4 5 6 7 8 9 10 11 12 13 14 15 16 17 18 19 20 21 22 23 24 25 26 27 28 29 30 31

DECEMBER

- 23 - O.K.
- 24 - O.K.
- 25 - O.K.
- 26 - O.K.

→ 27 - hunched over.

VIRUS:

28 - hunched, face slightly swollen but not red.

29 - 8:30 AM - same

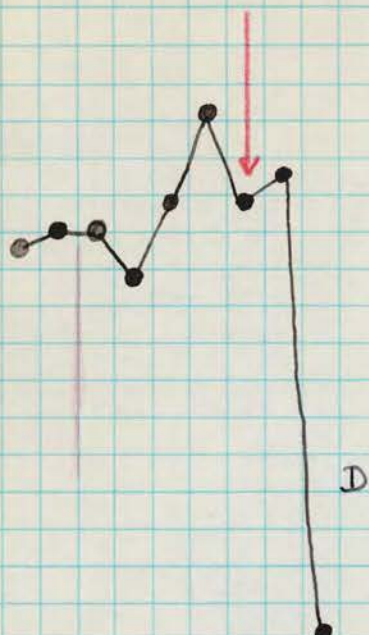
2¹⁵ Dead, warm. Perfusion: Pools in cerebral cortex. Better in spinal cord, medulla, mid-brain. → Z.A.
Viscera: oedema in lungs.

R.H. 1199

16 mg base/Kg/day

GROUP III, Cholera Exp. V of: 12/23/48

106
105
104
103
102
101
100
99
98
97
96
95
94



Fixation not very good

But some chromatolytic neurons present in oculomotor nuclei + medulla.

DRUG DISCONTINUED

0 0 1 2 3 4 0 1 2 3 4 5 6 7 8 9 10 11 12 13 14 15 16 17 18 19 20 21 22 23 24 25 26 27 28 29 30

DECEMBER 21 22 23 24 25 26 27 28 29 30 JAN 1 2 3 4 5 6 7 8 9 10 11 12 13 14 15 16 17 18 19 20 21 22 23 24 25 26 JAN '49

DECEMBER 23 9 PM. Vomited @ 10 - not repeated.

24 - o.k.

25 - o.k.

26 - 9 AM. The skin around his right eye appeared red. Somewhat swollen his right eyelids.
9 PM. More swollen around his right eye.

→ 27 - o.k.

VIRUS:

28 - Sits up hunched, red swelling left eye and side of face.

29 - 8:30 AM - lying down on cage floor - very weak face same.

DRUG DISCONTINUED

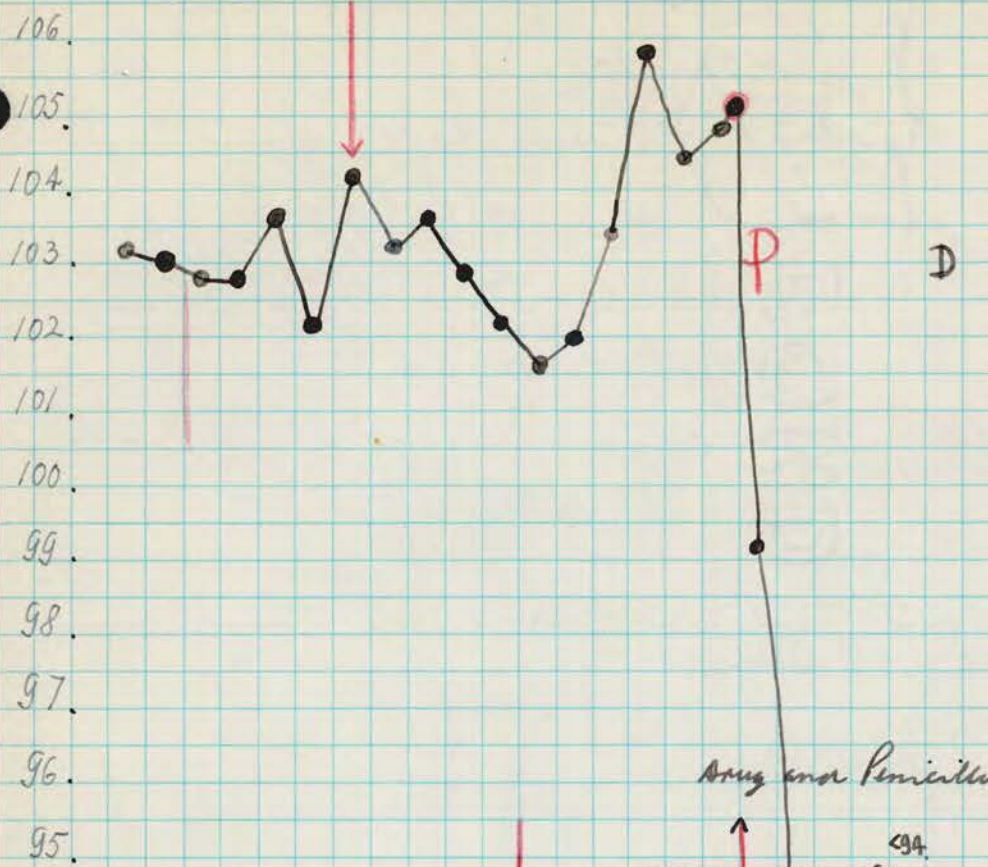
30 - Dead. Rigor.

Autopsy: No gross pathological changes in visceral. CNS - in L.A.

- JAN. 5 - 4 P.M. Drug: 8mg base/kilo + Penicillin 300,000 U
6 P.M. O.K.
- JAN. 6 - 8³⁰ AM - O.K.
9.00 AM - Drug: 8mg base/kilo + Penicillin: 100,000 U.
3.30 O.K.
4 P.M. Drug: 8mg base/kilo + Penicillin: 300,000 U
- " 7 - 7⁴⁵ AM: Partial paralysis both lowers.
Drug and Penicillin DISCONTINUED
4³⁰ P.M. Not change.
- " 8 - 9 AM - Prostrate but mouse left
upper and head.
10⁴⁵ AM - Sacrificed - Blinded under
chloroformic anesthesia - washed
with saline on fixation with
saline-formaldehyde-AA - Not complete
fixation on C.N.S., especially on brain.
Viscera: no gross pathological chan-
ges
C.N.S.: Z.A.

RH 1201

Group IV, *S. pleuropneumoniae*, Exp. V, of 12/23/48
 16 mg base / kilo / day + Aqueous Penicillin
 100,000 U 3 x a day



Histology - Polio
 Drug pathology - ?
 or absent

94. CONTINUED - PENICILLIN ONLY
 0 0 1 2 3 4 5 6 7 8 9 10 11 12 13 14 15 16 17 18 19 20 21 22 23 24 25 26 27 28 29 30
 DECEMBER 21 22 23 24 25 26 27 28 29 30 31 1 2 3 4 5 6 7 8 9 10 11 12 13 14 15 16 17 18 19 20 21 22 23 24 25 26 27 28 29 30 31
 '49

DECEMBER

- 23 - O.K.
- 24 - O.K.
- 25 - O.K.
- 26 - O.K.
- 27 - O.K.

VIRUS:

- 28 - O.K.
- 29 - O.K.
- 30 - O.K.
- 31 - O.K.

Penicillin - 9 A.M. - 100,000 U
 3 P.M. - 300,000 U

JAN. 1 - O.K. - " - 1:30 P.M. - 300,000 U
 " 2 - O.K. - " - Noon - 100,000 U
 " 3 - O.K. - 4 AM Drug: 8 mg base / kilo + Penicillin 100,000 U
 4 PM Drug: 8 mg base / kilo + Penicillin 300,000 U
 " 4 - 9 AM O.K. Drug: 8 mg base / kilo + Penicillin 100,000 U
 4 PM O.K. Drug: 8 mg base / kilo + Penicillin: 300,000 U
 " 5 - O.K.
 9 AM: Drug: 8 mg base / kilo + Penicillin: 100,000 U
 12 PM Drug: 8 mg base / kilo + Penicillin 200,000 U
 6 PM: checked - Polio motor.

JAN. 6 - 8³⁰ AM O.K.

9 AM Drug: 8 mg base/kilo + Penicillin: 100,000 U
3³⁰ PM: O.K.
4 PM Drug: 8 mg base/kilo + Penicillin: 200,000 U

7 - 7⁴⁵ AM: Prostrate, mouse both upper and head.

- Drug and Penicillin DISCONTINUED -

4³⁰ PM - Not change. -

8 - 9 AM: Temperature: 94. -

Same as before: mouse head and both upper.

9 - Temperature: 94.2.

Very weak. Cannot move head, and any extremities.

10 - Same as yesterday. -

11 - Very weak respiratory movements.

12 - 8³⁰ Dead, rigor.

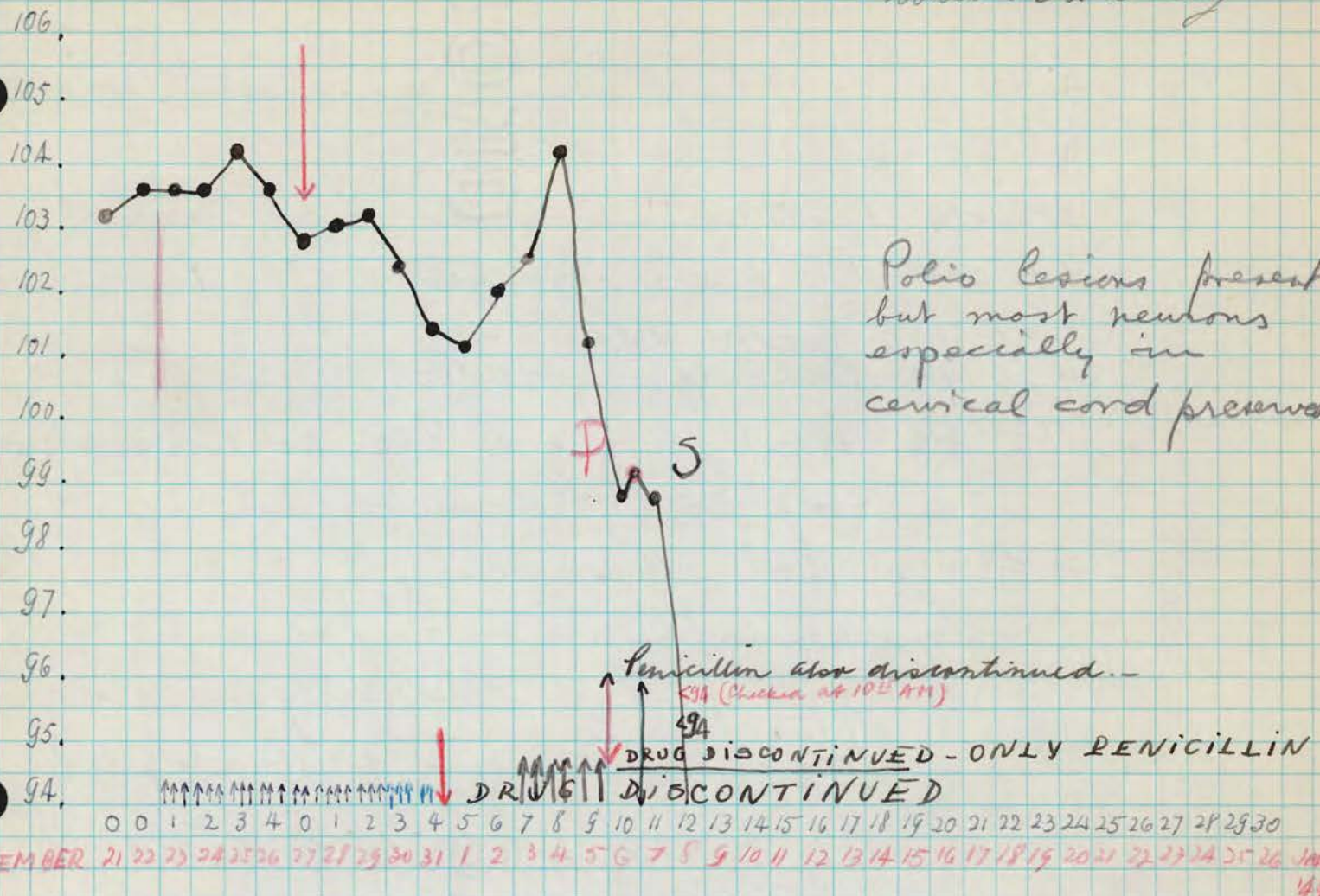
Immediate autopsy:

Viscera - No gross pathological changes, but some esophagostomus lesions on ileum. Small cystlike lesions on both lungs. Otherwise, normal. -

C.N.S. - Soft - Pieces in F.A. -

RH. 1202

GROUP IV *Sarplasmocid*, Exp. V of: 12/23/48
 16 mg base/Kg/day + Aqueous Penicillin
 100,000 U 3 x a day



Polio lesions present but most neurons especially in cervical cord preserved

DECEMBER

23	O.K.
24	O.K.
25	O.K.
26	O.K.
→ 27	O.K.
VIRUS:	
28	O.K.
29	O.K.
30	O.K.
31	O.K.

Penicillin - 9 AM - 100,000 U
 3 PM - 300,000 U

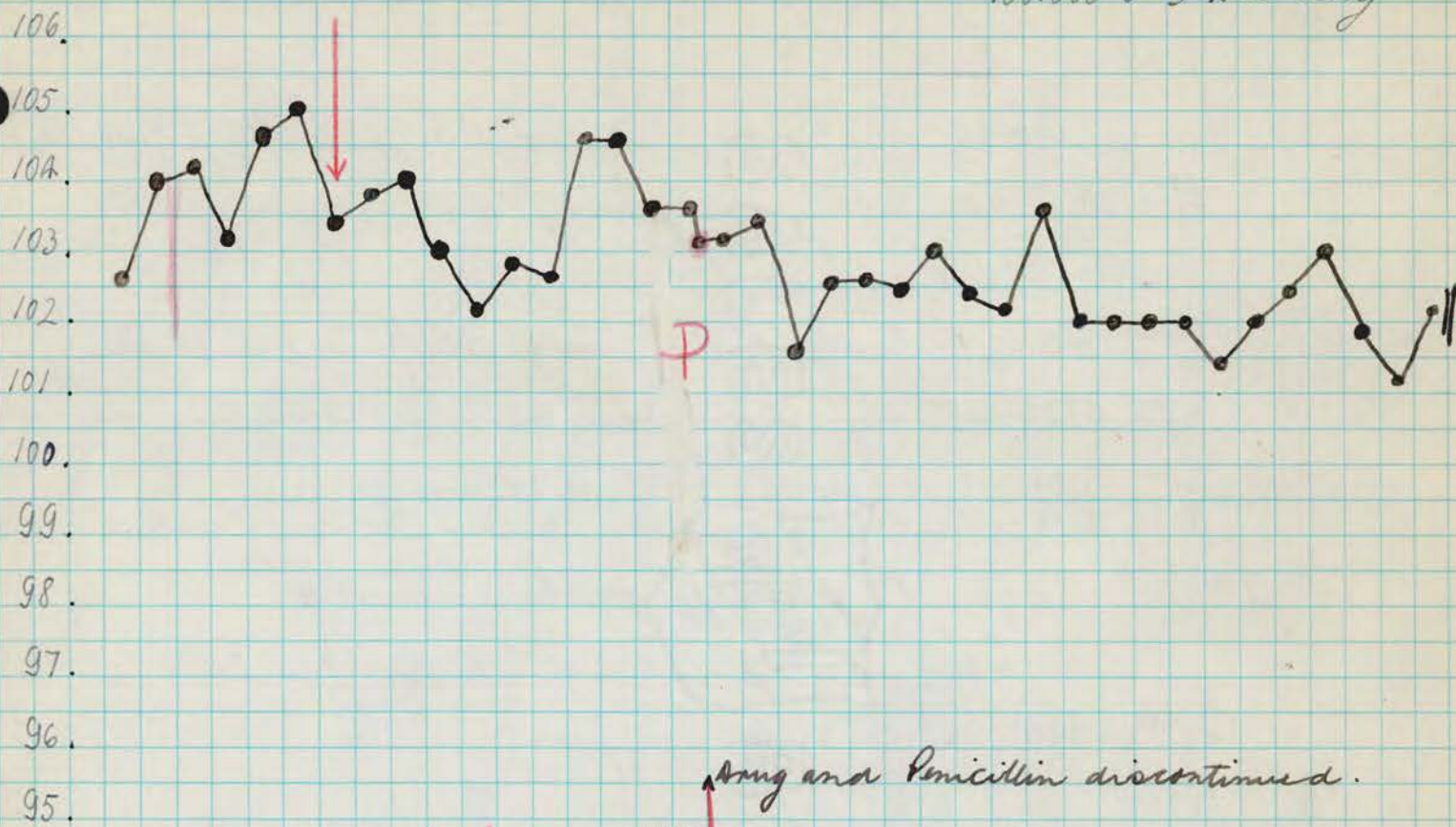
JAN. 1	- O.K.	"	- 1:30 PM - 300,000 U
" 2	- O.K.	"	- Noon - 100,000 U
" 3	- O.K.	"	6 PM - 300,000 U
" 3	- O.K.	9 AM:	Penicillin: 100,000 U
" 4	- O.K.	11 AM:	Drug: 8 mg/Kg
" 4	- O.K.	4 PM:	Drug: 8 mg/Kg + Penicillin: 300,000 U
" 4	- O.K.	9 AM:	O.K.
" 4	- O.K.	4 PM:	O.K.
" 4	- O.K.	4 PM:	Drug: 8 mg/Kg + Penicillin: 300,000 U

JAN.

- 5 - 9 AM - Partial paralysis right lower.
4 PM - Drug: 8 mg base/Kilo + Penicillin: 100,000 U
Drug: 8 mg base/Kilo + Penicillin: 200,000 U
6 PM - Same condition.
- " 6 - 8³⁰ AM: Partial paralysis both lower. -
9.00 AM: NO DRUG: Temperature: 98.8 - Penicillin: 100,000 U
3.30 PM: Prostrated.
4.00 PM: Penicillin: 200,000 U.
- 7 - 7⁴⁵ AM: Prostrate, mouve both arms and head.
Drug and Penicillin DISCONTINUED
4³⁰ PM. Not change. -
- " 8 - Can mouve both arms and head.
4 PM - Sacrificed - Bleeding under
chloroformic anesthesia -
viscra: not gross pathological
changes.
C.N.S: N.A.

RH-1203

GROUP IV *Chlamydomonas* sp. V of 12/23/48
16 mg base/K₂S₂O₈/day + Aqueous Penicillin
100,000 U 3 x a day



94. DRUG DISCONTINUED; Penicillin continued.
 0 0 1 2 3 4 0 1 2 3 4 5 6 7 8 9 10 11 12 13 14 15 16 17 18 19 20 21 22 23 24 25 26 27 28 29 30

DECEMBER: 21 22 23 24 25 26 27 28 29 30 31 1 2 3 4 5 6 7 8 9 10 11 12 13 14 15 16 17 18 19 20 21 22 23 24 25 26 JAN. '49

DECEMBER

- 23 - O.K.
- 24 - O.K.
- 25 - O.K.
- 26 - O.K.
- 27 - O.K.

VIRUS:

- 28 - O.K. but hair erect.
- 29 - O.K.
- 30 - slightly hunched - otherwise O.K. hair erect.
- 31 - O.K. Penicillin - 9 AM - 100,000 U
3 PM - 300,000 U

JAN 1 - O.K. - localized abscess about 0.7cm. in diam. at outer corner of right eye. Penicillin - 1:30 PM - 300,000 U

- " 2 - O.K. Penicillin - noon - 100,000 U
6 PM - 300,000 U
- " 3 - O.K. 9 AM: Drug: 8 mg + Penicillin: 100,000 U
4 PM: Drug: 8 mg + Penicillin: 200,000 U
- " 4 - O.K. 9 AM: Drug: 8 mg + Penicillin: 100,000 U

JAN. 4. 4 PM - O.K.

Drug: 8 mg base / kilo + Penicillin 300,000

" 5 - 9 AM - O.K.

Drug: 8 mg base / kilo + Penicillin 100,000

4 AM - O.K. Drug: 8 mg base / kilo + Penicillin 300,000

6 PM - O.K.

" 6 - 8³⁰ AM: Liliamatar - "Foot drop" on left side.

9.00 AM: ^{Thin} Drug: 8 mg base per kilo + Penicillin 100,000

3³⁰ PM: O.K. but Foot drop.

4.00 PM: Drug: 8 mg base / kilo + Penicillin 300,000

" 7 - 7⁴⁵ AM: Partial paralysis both lowers.

Drug and penicillin DISCONTINUED

4³⁰ PM - Same as before.

" 8 - Can sit up. Same condition.

" 9 - Complete paralysis lowers. Partial paralysis on back, but I can sit up.

There is a chain of lymphangitis on the internal side of his left lower leg. Cold, no red, this inflammatory lesion looks regressing.

" 10 - Same as before.

" 11 - Complete paralysis both lowers. Partial paralysis on back, sit up. Not change.

" 12 - Not change.

" 13 - Same as before.

" 14 - Same condition.

" 15 - Same as yesterday.

" 16 - Not change.

" 17 - Same as before.

" 18 - Not change.

" 19 - Same as before.

" 20 - Not change.

" 21 - Same as before.

" 22 - Not change.

" 23 - Same as before.

" 24 - Not change.

Rh. 1203 -

Group IV - Dorsal road, Exp. V

Op: 12/23/48

JANUARY-49-

25 - Sits up. mouse lowers when stimulated.
Appets: O.K.

26 - Same as before. -

27 - Same as before. -

28 - " " "

29 - " " "

30 - " " "

31 - " " "

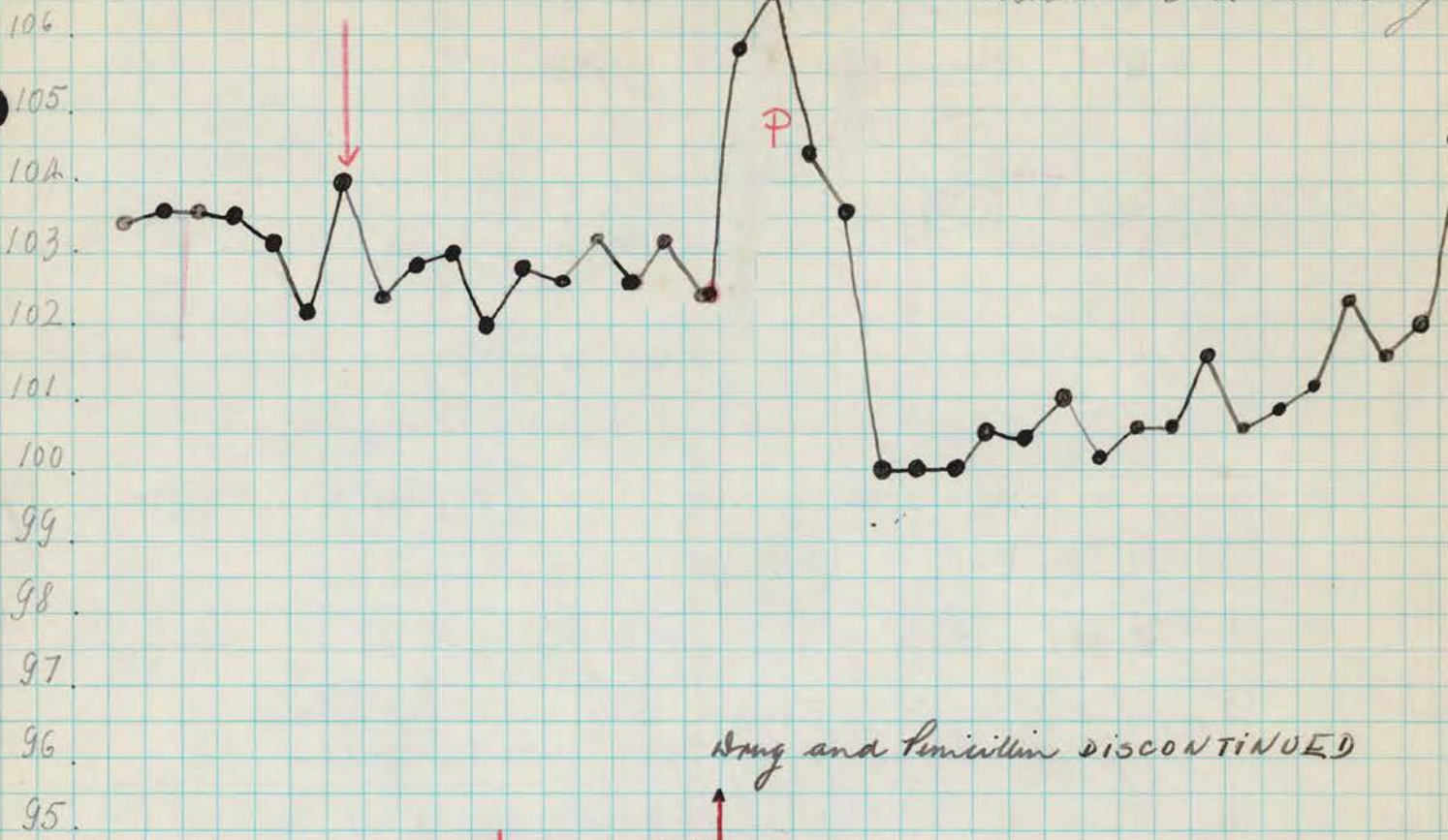
FEB

1 - " "

" 4 - " "

R.H. 1204

GROUP IV *Yersinia enterocolitica* Exp. T. of: 12/23/48
 16 mg base/Kilo/day + aqueous Penicillin
 100,000 U 3 x a day



94. DRUG DISCONTINUED, Penicillin continued. -
 0 0 1 2 3 4 0 1 2 3 4 5 6 7 8 9 10 11 12 13 14 15 16 17 18 19 20 21 22 23 24 25 26 27 28 29 30
 DECEMBER: 21 22 23 24 25 26 27 28 29 30 31 1 2 3 4 5 6 7 8 9 10 11 12 13 14 15 16 17 18 19 20 21 22 23 24 25 26 Jan 49.

DECEMBER

- 23 - O.K.
- 24 - O.K.
- 25 - O.K.
- 26 - Hunched over.
- 27 - Same condition.

VIRUS:

- 28 - O.K. hair erect; not very active; somewhat hunched.
- 29 - O.K. " " " " " "
- 30 - O.K. same as before
- 31 - O.K. but not very active - Penicillin - 9AM - 100,000 U
 " - 3PM - 300,000 U

- JAN. 1 - Same; - Penicillin - 1:30PM - 300,000 U
- 2 - " ; - " - noon - 100,000 U
 6PM - 300,000 U -
- 3 - O.K. 9 AM: Penicillin: 100,000 U
 11 AM: drug: 8 mg base/Kilo
 4 PM: drug: 8 mg base/Kilo + Penicillin: 300,000 U
- 4 - O.K. 9 AM: drug: 8 mg base/Kilo + Penicillin: 100,000 U
 O.K. 4 PM: drug: 8 mg base/Kilo + Penicillin: 300,000 U

JAN 5 - O.K.

9 AM: Drug: 8 mg base / kilo + Penicillin: 100,000 U

4 PM: Drug: 8 mg base / kilo + Penicillin: 300,000 U

6 PM: O.K.

6 - 8³⁰ AM: O.K. but thin.

9.00 AM: Drug: 8 mg base per kilo + Penicillin: 100,000 U

3.30 PM: O.K.

4.00 PM: Drug: 8 mg base per kilo + Penicillin: 300,000 U

7 - 7⁴⁵ AM: Pulmotor + Some excitement. -

Drug and Penicillin DISCONTINUED -

4³⁰ PM - Not change. -

8 - 9 AM - Facial paralysis, right side.

9 - Not new paralysis - Only facial paralysis on right side.

10 - Today, this monkey appeared with partial paralysis on both lowers and weakness on left upper. Not change on the picture of his facial paralysis.

11 - Not change.

12 - Same as before, but sometimes lying down. Partial paralysis on back. Can sit up. -

13 - Today, this monkey cannot sit up. Partial paralysis all four extremities and back. No neck paralyzed.

14 - Same as yesterday. -

15 - Same as yesterday. -

16 - Not change.

17 - Same as before.

18 - Not change.

19 - Same as before.

20 - Not change. -

21 - Same as before.

22 - Not change. -

23 - Same as before.

24 - Not change. -

25 - Today this monkey appeared seat up. Can move all extremities, partially on lowers.

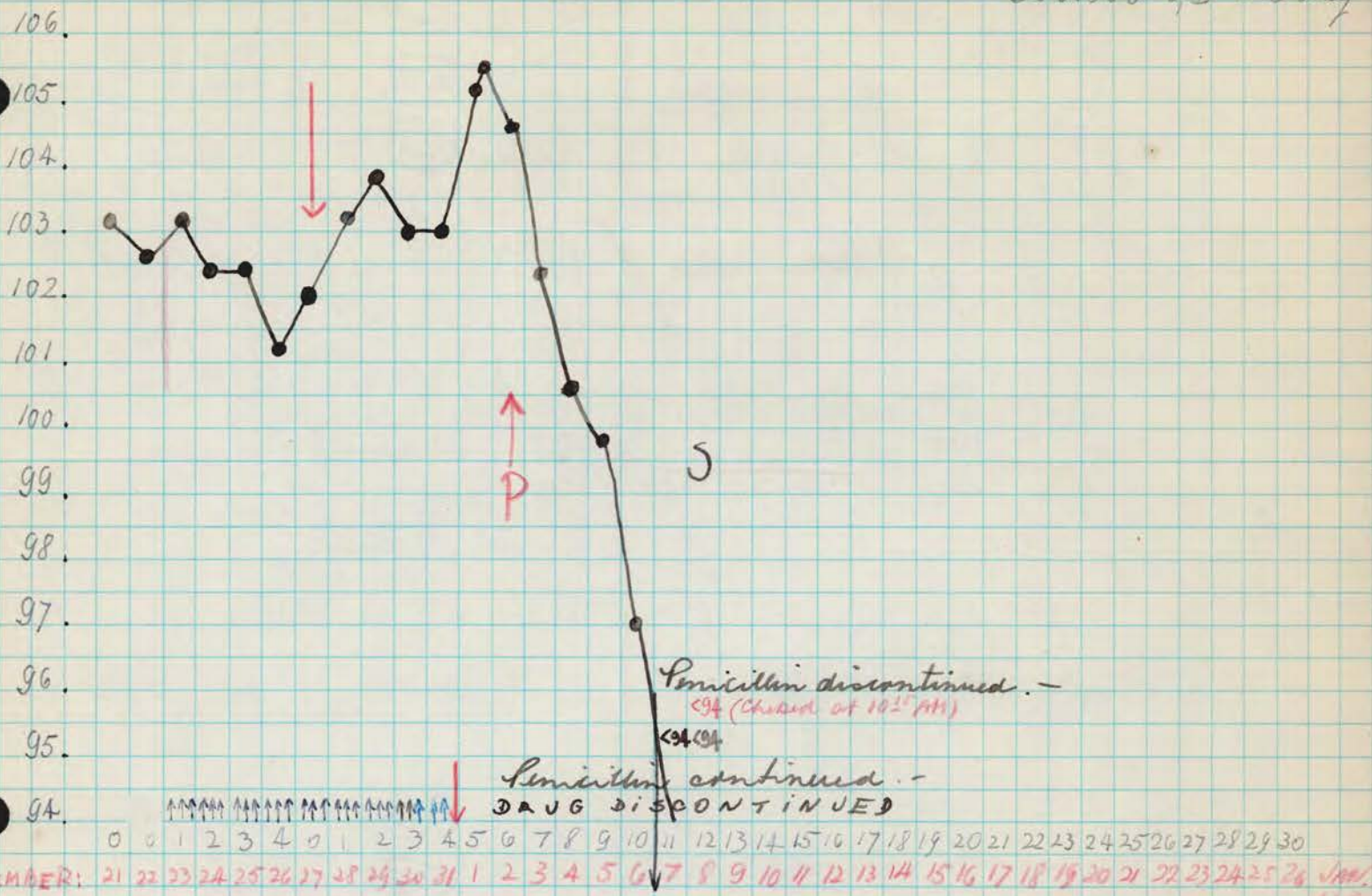
Rh. 1204_

Josephson rd exp. $\frac{V}{12-23}$ / 48

JANUARY '49

26	-	same as before.	-
27	-	"	"
28	-	"	"
29	-	"	"
30	-	"	"
31	-	"	"
Feb 1	-	"	"

RU 1205 - 16 GROVE & Ploegman Blvd. V. of 12/23/48.
 my case. 1st day Procain penicillin
 300,000 U.I. x a day



- DECEMBER
- 23 - O.K.
 - 24 - O.K.
 - 25 - O.K.
 - 26 - O.K.
 - 27 - O.K.
 - 28 - O.K.
 - 29 - O.K.

VIRUS:

- 28 - O.K.
- 29 - O.K.
- 30 - O.K.
- 31 - O.K. ; Penicillin - 9 AM - 300,000 U procain
- JAN. 1 - O.K. ; Procain penicillin - 300,000 U 1:30 PM
- " 2 - Partial paralysis right upper
- " 3 - 9 AM partial paralysis both lower and right upper. 9 AM: Penicillin: 300,000 U
- " 4 - 9 AM Prostrated. Partial paralysis all four extremities and back. 9 AM: Penicillin: 300,000 U
- " 5 - 9 AM: Complete quadriplegia - no neck paralysis. Penicillin: 300,000 U

JAN - 6 - 8³⁰ AM: Same condition -

9 AM: Penicillin: 300,000 U.

4 PM - Same condition - no neck
paralyzed. -

" 7 - 7⁴⁵ AM: Partial paralysis all four
extremities. - Prostrate. - Move head.

Penicillin discontinued.

4³⁰ PM - Not change.

" 8 - Same condition. - Move head. -

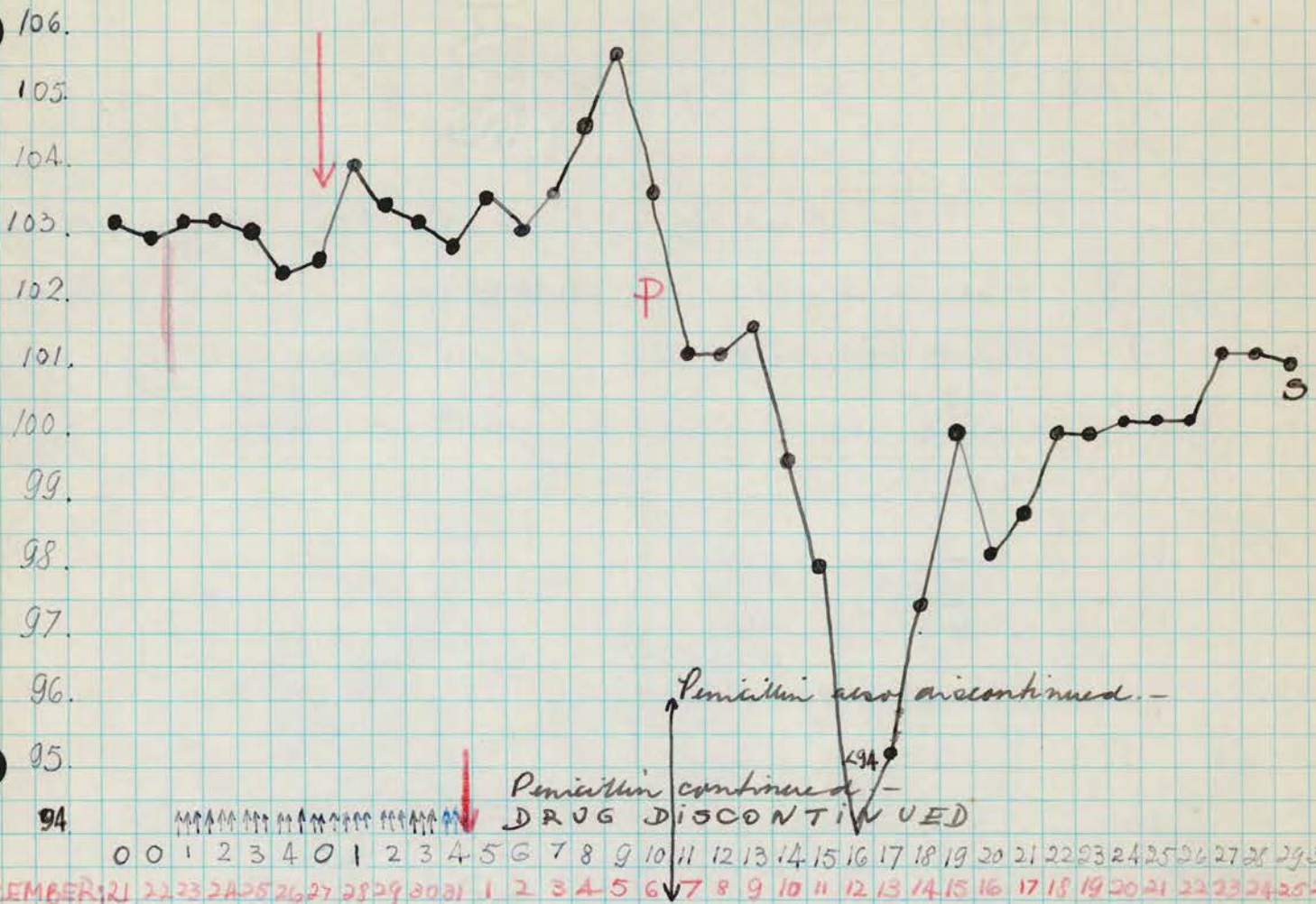
2 PM - Sacrificed - Bleeding, under
chloroform anaesthesia.
autopsy: not gross pathological
changes on viscera.

C. N. S.: Pieces, as routine, in L.A.

RH. 1206

16 mg base / kilo / day + Penicillin

GROUP I. Toxoplasma Exp. Top 12/23/48
300,000 U 1x a day



DECEMBER

23 — O.K.
 24 — O.K.
 25 — O.K.
 26 — O.K.
 → 27 — O.K.
 VIRUS

28 — O.K.
 29 — O.K.
 30 — O.K.
 31 — O.K.

Proc. penicillin — 300,000 U 9AM

JAN. 1 — O.K. " " " 1:30 PM
 " 2 — O.K. " " " Noon.
 " 3 — O.K. 9AM " " 300,000 U
 " 4 — Excited " " 300,000 U
 " 5 9AM Marked tremor. Penicillin: 300,000 U

JAN. - 6 - 8³⁰ AM: Partial paralysis right upper and both lower. -

9.00 AM: Penicillin: 300,000 U.

4 PM - Cannot sit up. -

" 7 - 7⁴⁵ AM: Partial paralysis all four extremities.

Penicillin discontinued. -

4³⁰ Prostrate. Move head and left upper

" 8 - Same as before. Move head and left upper.

" 9 - Prostrate, but can move head and left upper.

" 10 - Same condition as yesterday. -

" 11 - Not change.

" 12 - Same as before. -

" 13 - Same as before. -

" 14 - Same condition. -

" 15 - Same as before. -

" 16 - Not change. -

" 17 - Same as before.

" 18 - Not change. -

" 19 - Same condition. -

" 20 - Not change. -

" 21 - Same as before.

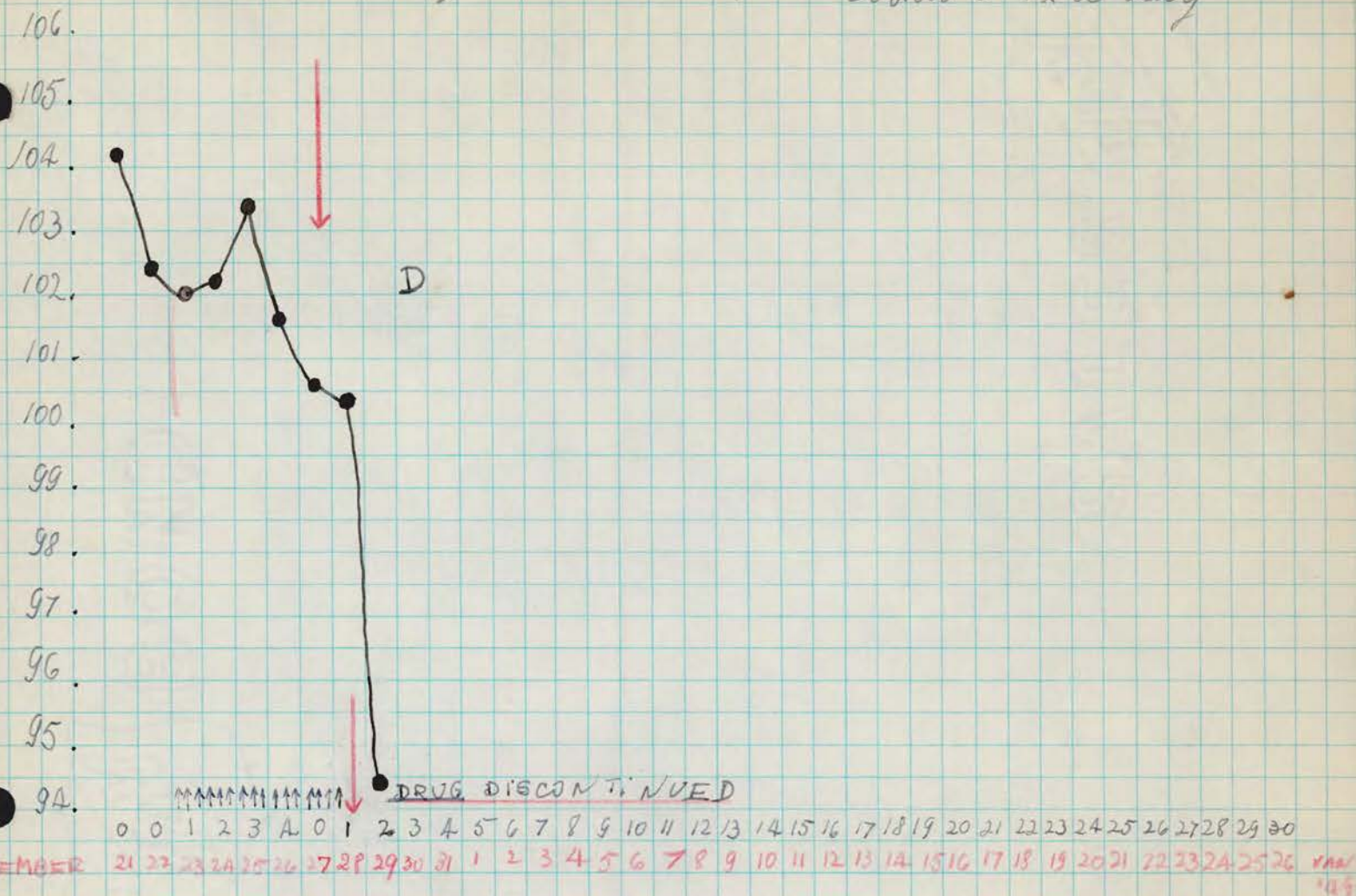
" 22 - Not change. -

" 23 - Same condition. -

" 24 - Same as before: Prostrate; but can move all four extremities. Good recovery. -

" 25 - Same as yesterday. -
Killed - No autopsy. -

R.H. 1207 - 16 mg base / kilo / day + Procain Penicillin
 300,000 U 1x a day
 (GROUP V) *Leptospira* Expt. of 12/33/48

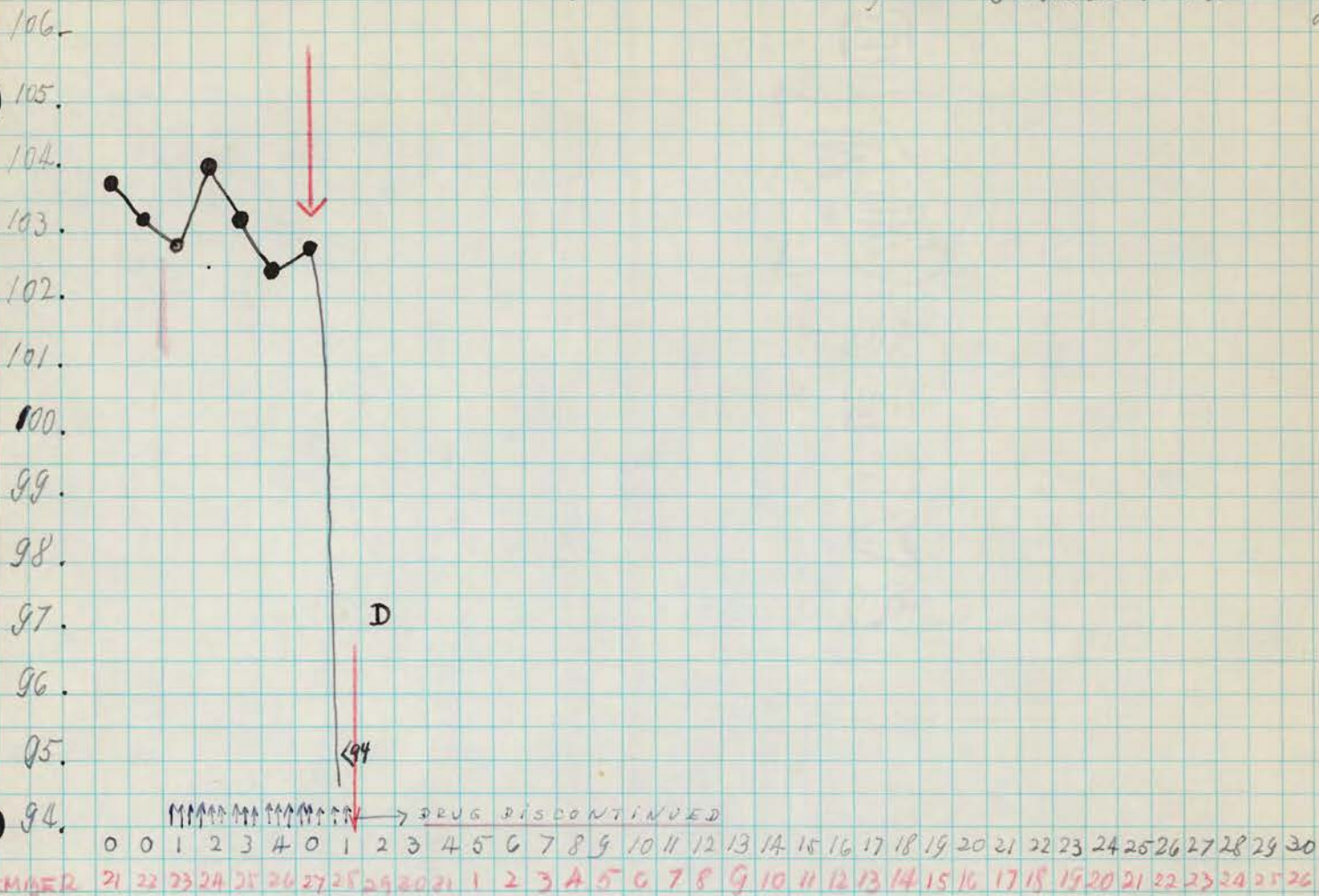


DECEMBER 21 - The temperature recorded was taken at 2.30 PM. (Normal)
 note: monkey from Dr Schmidt's lab.

- 22 - O.K.
 - 23 - O.K.
 - 24 - O.K.
 - 25 - O.K.
 - 26 - Cough
 - 27 - Cough - Hunched over.
- VIRUS:**

- 28 - 11 AM: Lying down; no exterior infection.
 DRUG DISCONTINUED
 PENICILLIN GIVEN
- 29 - Weak; lying down on cage floor
- 30 - 7:30 AM Dead, still warm.
 10:30 AM Autopsy: Edema in lungs.
 CNS: L.A.

R.H. 1208 - 16 mg base/Kg/day + Procain Penicillin 300,000 U 1x a day. Group V Toxoplasma Exp. V of 12/21/49



DECEMBER 21: The temperature recorded was taken - at 2.30 PM. -
Note - This monkey ^{normal} came from Dr Schmidt's Lab. -

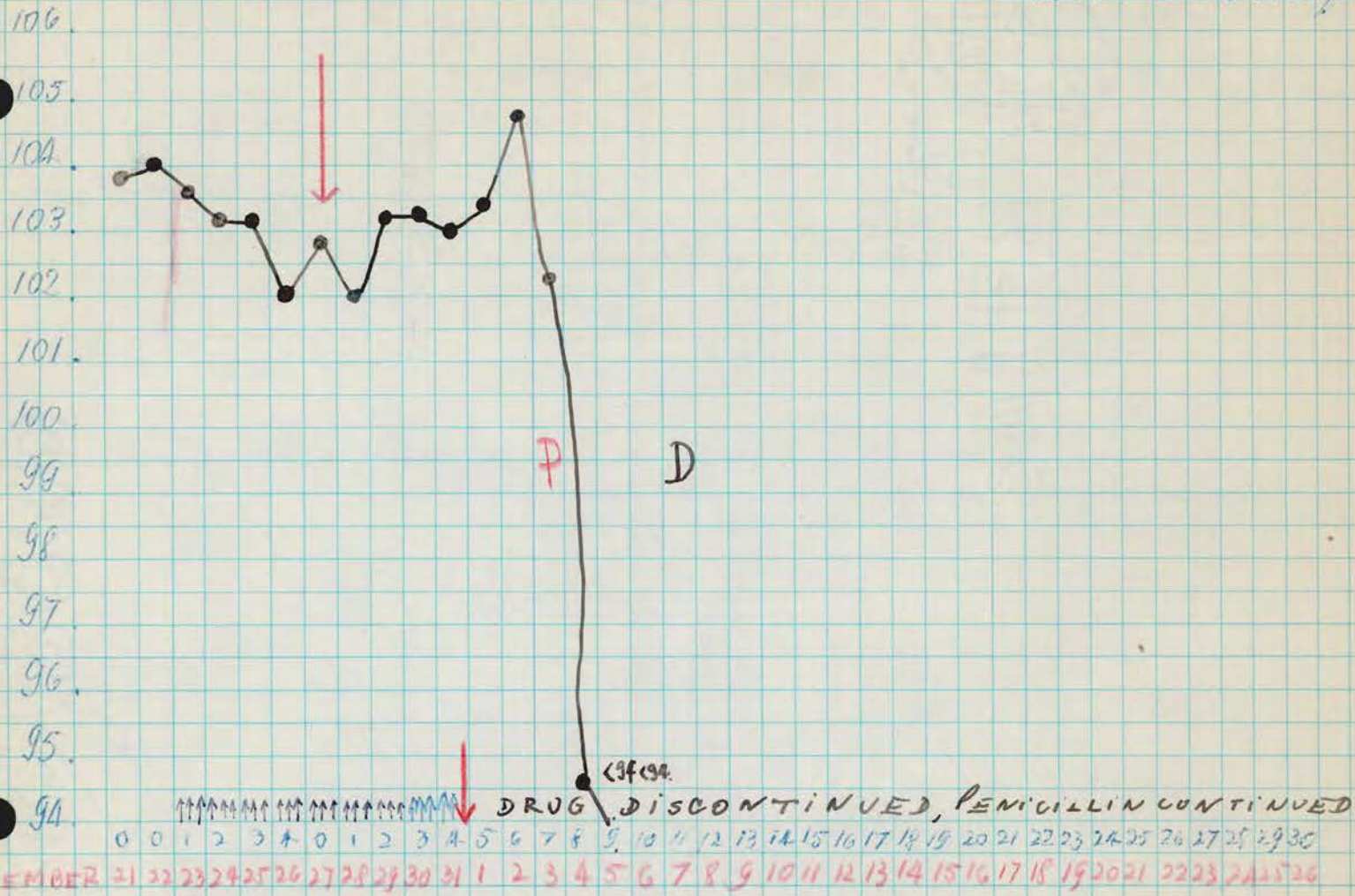
- 22 - O.K.
 - 23 - O.K.
 - 24 - O.K.
 - 25 - O.K.
 - 26 - O.K.
 - 27 - hunched over.
- VIRUS:**

28 ^{was} hunched over; hair erect; no ex. temp. in rectum.
8 PM: Lying down - DRUG DISCONTINUED
 PENICILLIN GIVEN.

29 - Dead in AM.
 Autopsy: 10³⁰ - No gross pathological changes but liver greenish in yellow
 2 pieces in L.A.
 CNS: L.A.

R.H. 1068 x - 10 mg/kgase / kilo / day + Procain Penicillin 300,000 U 1x day

GROUP 7 of Supplemental Exp V of 12/25/48



DECEMBER 23 - 9AM: Vomited @ 1/10 - not repeated.

- 24 - O.K.
- 25 - O.K.
- 26 - O.K.
- 27 - O.K.

VIRUS

- 28 - O.K.
- 29 - O.K.
- 30 - sits up - active - face slightly swollen.
- 31 - O.K. - Procain penicillin - 300,000 U 9AM

- Jan. 1 - Tremor excited; " " " " 1:30 PM
- " 2 - Tremor " " " " Noon
- " 3 - Partial paralysis both lower " Penicillin 300,000 U
- " 4 - Prostrated. Partial paralysis all four extremities after Bath. 9AM. Penicillin: 300,000 U
- " 5 - 9AM Complete quadriplegia - no neck paralysis. Penicillin: 300,000 U

JAN. 6 - 8³⁰ AM - Completely prostrated.

9.00 AM - Penicillin: 300,000 U

4.00 PM - Same condition. -

" 7 - 7⁴⁵ AM - Dead, rigor. -

Autopsy: 9 AM: Viscera: No gross pathological changes.

CNS: Soft - slices in $\frac{1}{2}$ A.