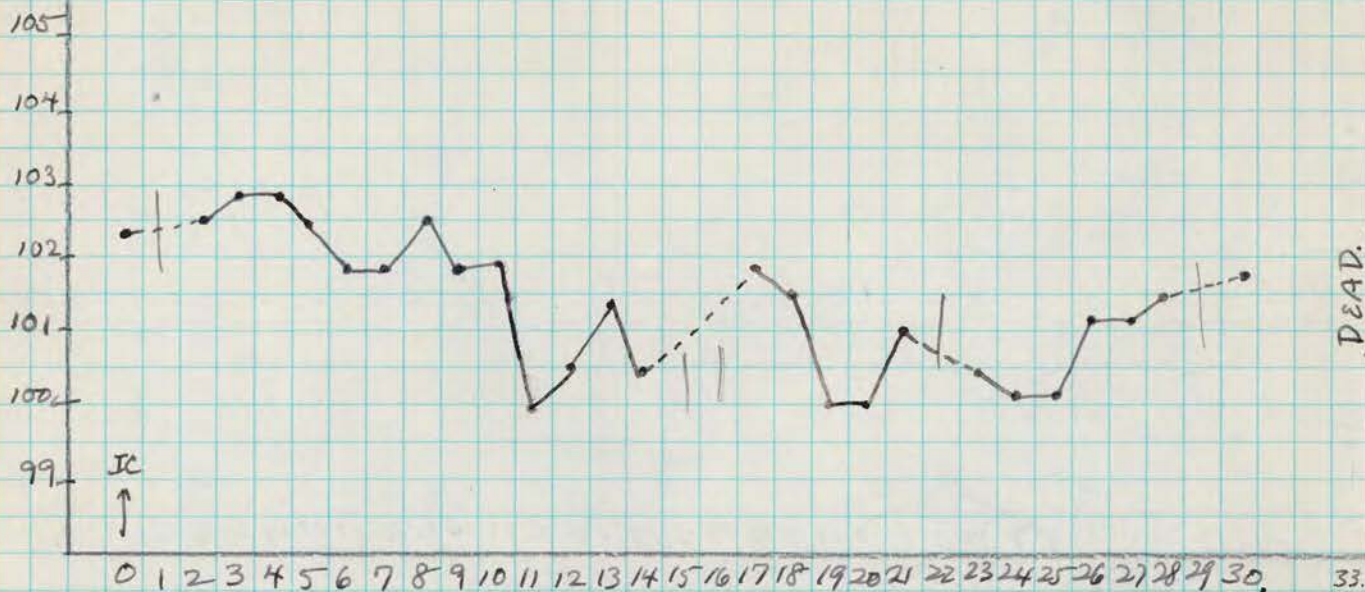


HONOL
Challenger

AUG 21 1948

Challenge B - Inoculation with Homologous Virus (Polio)
 Convalescent Monkey.

Rh. 463-



AUG 21 1948 - Challenged by i.v. into right frontal lobe of 1.0 cc of [redacted] polio virus (20%), Generation II; The simultaneous control monkey is Rh. 793.
Date of original inoculation was 5/19/48.

CLINICAL CONDITION AT TIME OF CHALLENGE: mild diarrhea. - There is complete paralysis of left lower, and partial paralysis of right lower. - Monkey gets around very well with uppers. - Extensive atrophy of muscles of both lowers; both uppers atrophic as well - but only mildly so.

9-20-48 (30th day) - Motor status unchanged. - However monkey has been getting progressively thinner at times with a continuation of diarrhea present at time of challenge. No cough; - no fever during past 30 days.

9-23-48 DEAD: Autopsy; no gross TBC; animal emaciated; extreme atrophy.

TISSUE FOR HISTOLOGY: numerous levels of lumbar and cervical cord; 3 levels of Thoracic cord; 2 Medulla; midbrain; N. Olfactorius. (2-A.).

AUG 21 1948

Control Monkey Used Simultaneously with Challenge
 Re-inoculation of [redacted] Convalescent (Poli)

Rh. 793 - (control for Rh. 463 overleaf)



AUG 21 1948 - Inoculated (Right) frontal lobe with 1.0 cc of [redacted] polio virus (20% - Gen. II). This is control for Rh. 463 (overleaf).

(Rh. 793 when delivered on 8/13/48 from Okadia Farms had an abscess and sinus over lumbar spine; incision and further drainage yielded \pm 30 cc of foul green-yellow pus, of mixed flora, not TBC could be found on several successive days.)

8-24-48. Sinus seems to be healing; now has mild diarrhea.

9-21-48. T=104.7 - piloerect response; excited; disinclined to climb.

(32nd day) 9-22-48. T=103.6 - no clinical change. - Sacrificed (chloroform - Exsanguination); Autopsy - no gross TBC.

TISSUE FOR HISTOLOGY: 4 levels of lumbar; 2 Thoracic; 3 cervical cord; 2 levels medulla; midbrain; Thalamus. (Z-A).

HISTOLOGY: Above cord levels show rather extensive acute neuronophagia in a very early stage with poly infiltration; there is considerable PV infiltration - those roots which are intact are not definitely involved; but there are axonal outfall without acute change. -- Medulla shows PV cuffing; considerable acute neuronophagia of early stage, and Midbrain - shows extensive PV cuffing; numerous sites of acute neuronophagia but also glial aggregates suggesting "old" neuronophagia. Thalamus - shows much PV cuffing and sites of acute neuronophagia, and scattered glial infiltration, though not in aggregates to suggest sites of old neuronophagia.

DIAGNOSIS: POLIO (Acute) - also? "Old" i.e. "Relapsing Polio" ?