

# **Implementing an Active Directory Network**

**By**

**Scott Powers & Clint Shumaker**

**Submitted to  
the Faculty of the Information Engineering Technology Program  
in Partial Fulfillment of the Requirements for  
the Degree of Bachelor of Science  
in Information Engineering Technology**

**University of Cincinnati  
College of Applied Science**

**June 2006**

# Implementing an Active Directory Network

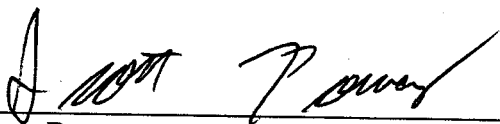
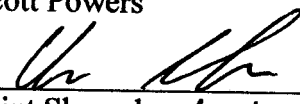
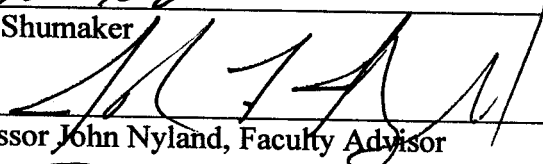

by

Scott Powers & Clint Shumaker

Submitted to  
the Faculty of the Information Engineering Technology Program  
in Partial Fulfillment of the Requirements  
for  
the Degree of Bachelor of Science  
in Information Engineering Technology

© Copyright 2005 Scott Powers & Clint Shumaker

The information in this document is proprietary and may not be reproduced or distributed  
in whole or in part without the permission of the owner.

 _____ Scott Powers	<u>6/8/2006</u> Date
 _____ Clint Shumaker	<u>6/8/2006</u> Date
 _____ Professor John Nyland, Faculty Advisor	<u>6.8.2006</u> Date
 _____ Patrick C. Kumpf, Ed.D. Interim Department Head	<u>June 8, 2006</u> Date

## **Acknowledgements**

- **Robert Cambell, Liaison and Technical Supervisor**
- **Professor John Nyland, Project / Class Advisor**
- **Dale Eads, Owner and Operator of Ead's Fencing Company**
- **Keith Gyarmati, Technical Assistant to Ead's Fencing Company**
- **John Tytus, Manager at Ead's Fencing Company**
- **Ead's Fencing Company**

## Table of Contents

List of Figures	Page 2
Abstract	Page 3
1.0 Project Description and Intended Use	Page 4
1.1 Problem Statement	Page 4
1.2 Description of the Solution	Page 5
1.3 User Profile	Page 6
1.3.1 Administrators	Page 6
1.3.2 Office Workers	Page 7
1.3.3 Yard Workers	Page 7
2.0 Network Diagram	Page 7
3.0 Project Planning	Page 9
3.1 Project Schedule	Page 9
3.2 Project Resources	Page 10
4.0 Proof of Concepts	Page 10
5.0 Testing	Page 12
6.0 Deliverables	Page 13
6.1 Single Sign on Environment	Page 13
6.2 Wireless Connectivity	Page 14
6.3 Backup Solution	Page 14
6.4 Anti-Virus / Anti-Spyware Solution	Page 14
6.5 Secure User Desktop	Page 15
7.0 Appendix	Page 16
Appendix A1 : Daily Administrative Tasks	Page 16
Appendix A2 : Weekly Administrative Tasks	Page 16
Appendix A3 : Monthly Administrative Tasks	Page 17
Appendix A4 : Default Domain Policy Example	Page 18
Appendix A5 : Enabling Roaming Profiles	Page 19
Appendix A6 : Project Schedule	Page 20
Appendix A7 : Show Running-Configuration (Firewall)	Page 21
Appendix A8 : Show ARP command (Firewall)	Page 25
Appendix A9 : Show Access-List command (Firewall)	Page 25
Appendix A10: Show Running-Config (Switch)	Page 25
Appendix A11: Show VLAN command (Switch)	Page 27
Appendix A12: Show xlate command (Firewall)	Page 28
Appendix A13: Disaster Recovery Plan	Page 29
Appendix B: Microsoft Windows XP Installation Documentation	Page 30
8.0 References	Page 94

## List of Figures

Figure 1	Network Diagram	Page 8
Figure 2	Project Resources	Page 10
Figure 3	Test Ping	Page 10
Figure 4	My Network Places	Page 11
Figure 5	Computers in Directory	Page 12
Figure 6	GFI Languard Port Scan Example	Page 13

## Implementing an Active Directory Network

### Abstract

Ead's Fencing company was established in the early 1990's that provided the service of installing fences for both residential and commercial locations. However, as the business expanded and grew, the need to actually produce the fences revealed itself and a new facility was needed. In addition to this new facility, a new network was needed to manage the different resources and machinery needed in the production of the fences. An Active Directory proved to be the most beneficial means as to reach this goal without being too cost-prohibitive while still maintaining the compatibility needed to inter-operate with other businesses in the Windows environment. Additionally, this network also needed to have a wireless solution to provide the employees with the freedom needed to manipulate their data from anywhere within the building. The network will utilize Windows Server 2003 Business Edition while also implementing an 802.11g WPA-enabled wireless network. As important as the usability of the network is in relation to the needs of the business, security is also an important concern. To remedy this concern, we are also implementing a hardware firewall for the network in addition to a software based firewall on each client system. Utilizing all of these resources will be necessary in providing an effective, reliable, and secure network for Ead's Fencing.

## 1.0 Project Description and Intended Use

### 1.1 Problem Statement

We are implementing an active directory network for a company called Eads Fencing. Originally, Ead's business was being run in a "garage" type atmosphere. Eads Fence only had a few employees and their main task from day-to-day was to install fences that Eads Fencing was contracted to do for their clients. However, Ead's Fencing wanted to grow and expand by trying to give their customers more options as well as gaining additional cliental. However, the company wanted not only install fencing, but also distribute and develop the fencing products in-house. To accomplish this, Eads Fencing bought an old lumber yard (located in Loveland, Ohio) that encompassed a total of four buildings which will house the fencing products. As the company continues to grow and expand by installing and selling more fences, the need for more employees has become a concern. They will need to be able share their databases of their available products as well as which products can be used in conjunction with other types of fences. Further, they will require the ability to e-mail their customers any information they require as to provide a fast and efficient means of communication. In addition to the various types of computers, printers, and network equipment, Ead's Fencing also has special machinery that will require network access to collect any necessary data. Also, security will be of paramount concern to the facility for both the logical data of the computers as well as the physical machines on the property. The problem is that the business will not be able to safely function at full potential without the use of a security system and a fully functional network. It is for these reasons that Ead's Fencing will

## Implementing an Active Directory Network

require us to implement an Active Directory if Ead's Fencing is to continue to expand and grow in the years to come.

### 1.2 Description of the Solution

Our solution to Eads Fencing is to create a network that is not only easy to manage, but easy to support as well. We are taking the company's independent machines and creating a new way of business so that its files and data will be easier to share. Making these changes will help create more accurate business decisions. To properly implement a directory based network, a Network Operating System (NOS) must be used. For this project, we will utilize Microsoft's Windows Server 2003 Small Business Edition as our NOS. It will enable the employer to properly manage users, printers, group policies, and other network resources. Further, it will provide the expandability the company needs as well as a user friendly environment the user will require when managing the network.

Some key components of this solution include:

- Hardware – This network will require multiple types of devices such as, but not limited to, Firewalls, Switches, Patch Panels, Servers, Cable, Client Machines
- Software – Software that will be needed to run the client systems and servers include Windows XP Professional, Server 2003 Small Business Edition, Backup Executive, McAfee Anti-Virus, Microsoft Anti-Spyware
- Access to the outside world via the internet, enabling the employees to gain more knowledge about products, view competitors products, and email customers and potential clients
- System backups to ensure file recovery due to power failure, accidental deletions, or the mishandling of information.
- Virus and spyware prevention to keep systems running at full potential and to keep all information secure.

## Implementing an Active Directory Network

- Group policies and privileges to maintain control over employees and ensure safety of secure files.

### 1.3 User Profile

An Active Directory based solution will provide much more functionality to the users of the network. They will be able to store any and all files they require in a central location on the server so that they can access them from any location. This ability will help to provide a more seamless work environment and help improve employee efficiency and productivity. Additionally, it will help to alleviate employee frustrations, in that many of the computer functions will already be set from the server via group policies. Group policies will help by not requiring the user to have advanced knowledge of the workings of the computer in order to use it.. After all, many of the users of these systems will be average people with minimal computer skills. These people will only want to try and finish their work and not spend their time fixing their computers.

To accomplish these tasks, we will implement group-based permissions throughout the network that will include three main groupings:

#### 1.3.1 Administrators

First, we will have our administrators group that will include both of us as well as a few key individuals that provide tech support for Ead's. Members of this administrators group will have full access to most of the system functions that need to be performed on the network. These tasks will include daily maintenance tasks such as taping backups, checking the system logs, and trying to troubleshoot any of the smaller problems that arise with users of the network. Further, it will

## Implementing an Active Directory Network

be the administrator's duty to ensure services such as anti-virus and anti-spyware are running routinely to ensure a safe and secure network.

### 1.3.2 Office Workers

Our second group will be the office workers spread throughout the main building. While there will be a few users in the second building, building one represents the bulk of the users and equipment. These users will not have quite the amount of control that the administrator group maintains, but they will not be restricted to a level in which they will be frustrated while using the systems. For example, the office workers will have the rights to configure the look and style of their desktops, but not be able to change the target location of their "My Documents." Settings such as the "My Documents" properties will be controlled via group policies that will be distributed by our server.

### 1.3.3 Yard Workers

Our last main group of users will be the workers in Ead's fencing yards who mostly need the computer for one or two purposes. These users will have the most stringent controls upon them to keep them from using the computers recreationally. For example, the yard workers will not be able to install software to prevent them from installing applications such as games or other types of personal programs.

## 2. Network Diagram

For our network, we decided to take advantage of an HP Proliant server that hosts our domain called Eadsfence as well as being the central storage point for the majority of our users. In addition, the server also comes equipped with an internal

## Implementing an Active Directory Network

tape drive that we will utilize for our backups. While our server is packed with power, our users' workstations are designed mostly for them to get the job done while still providing a pleasant user experience.

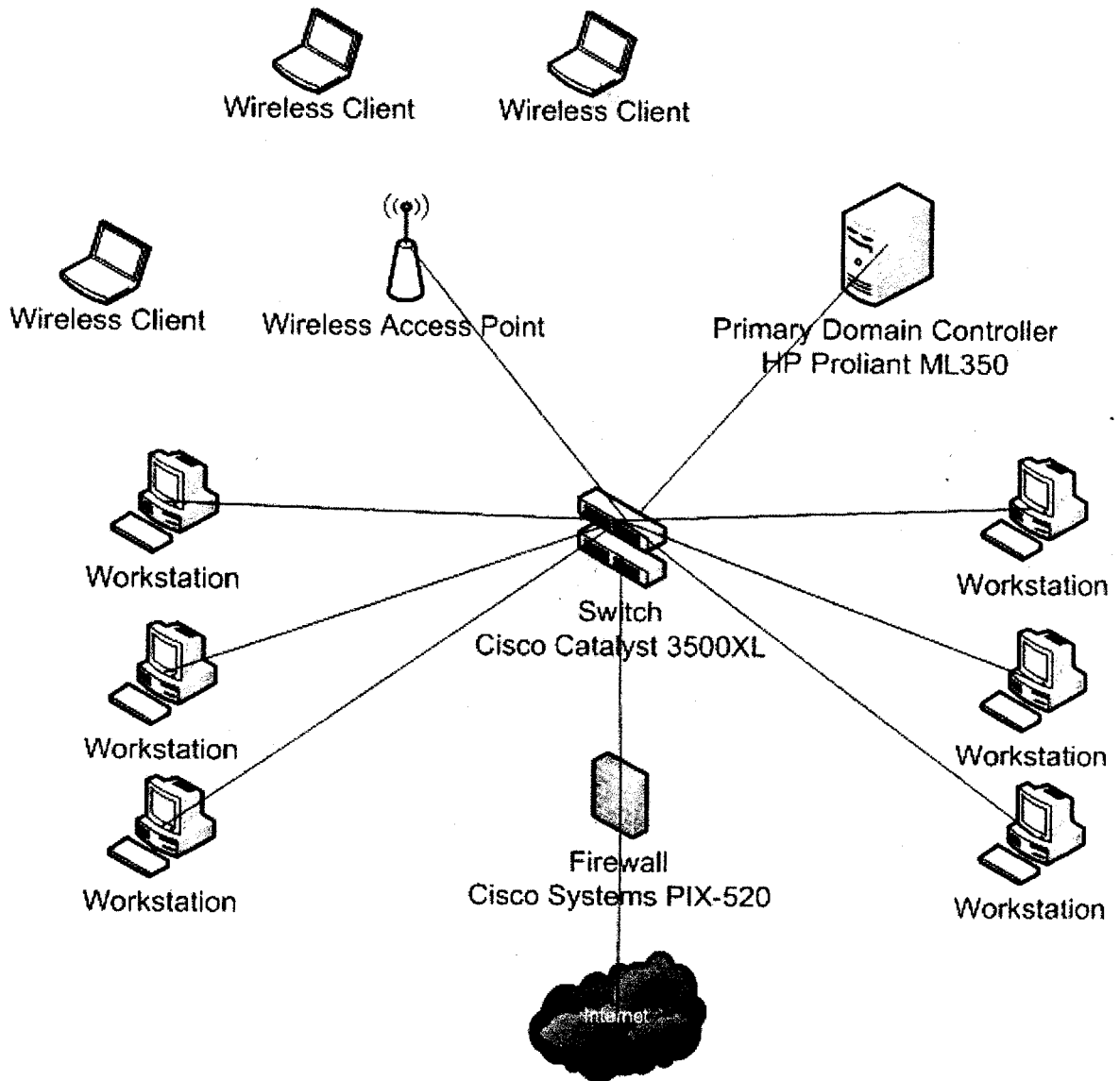


Figure 1 – Network Diagram

They are equipped with Celeron processors (although, they are running at 2.0+ GHz speeds) as well as 512MB of memory as to allow a pleasant work experience for the user, but not under-utilize the power of the system. Additional hardware that will be required for the proper use of our network is a firewall. Our firewall is a Cisco Series PIX-520

## Implementing an Active Directory Network

series with four dedicated network cards. One of these network cards will be dedicated to our external connection to the outside network. Another will be dedicated the internal network so as to separate the two networks and thus create our firewall. As for the remaining two network cards, they will be dedicated to act as separate DMZ zones. However, these zones will only be for future use at this time in case Ead's requires its use at a later date. This firewall will be then connected to our Cisco Catalyst 3500XL switch to allow the number of devices that will be required to connect to the network. As previously mentioned, we will use Windows 2003 Server Small Business Edition to manage our network. Since we only have one server at this time, most of our network's resources will be done via this machine with programs such as McAfee Anti-Virus management and the sharing of user resources.

### **3. Project Planning**

#### **3.1 Project Schedule**

Originally, our plan was to complete a majority of our project during the Winter break at the end of Senior Design I. It was our plan to get the servers as well as the end users' workstations installed and set up during this time period as well as the server and phone system. Unfortunately, Ead's Fence was unable to procure the hardware and other equipment needed in time for us to complete the project under our original timeline. Therefore, we revised our schedule to extend the length of Senior Design II as can be seen in Appendix A6. We began our project as scheduled during the first week of January and are currently on track according to our adjusted timeline. During the course of Senior Design III, we will test the stability and security of our network in addition to providing a wireless infrastructure for the facility.

## 3.2 Project Resources

For our resources, the details of the hardware can be viewed below in our Network Diagram section.

Timeline					
ID	Resource Name	Type	Std. Rate	Accrue At	Base Calendar
1	Scott Powers	Work	\$10.00/Hr	Prorated	24 Hours
2	Clint Shumaker	Work	\$10.00/Hr	Prorated	24 Hours
3	Server	Material	\$2,500.00	Prorated	
4	Workstations	Material	\$500.00	Prorated	
5	Router	Material	\$600.00	Prorated	
6	Cable	Material	\$300.00	Prorated	
7	Wireless AP's	Material	\$100.00	Prorated	
8	Windows server 2003 SB	Material	\$580.00	Prorated	
9	Switch	Material	\$500.00	Prorated	
10	Rack	Material	\$100.00	Prorated	
11	Back-up exec	Material	\$480.00	Prorated	
12	McAfee Anti-virus	Material	\$420.00	Prorated	

Figure 2 – Project Resources.

## 4. Proof of Concepts

Figure 4, below illustrates a test ping between two systems on our network. This confirms connectivity from one computer to another in the network.

```

C:\WINDOWS\system32\cmd.exe

C:\>ping acer6

Pinging acer6.eadsfence.local [192.168.1.16] with 32 bytes of data:

Reply from 192.168.1.16: bytes=32 time<1ms TTL=128
Reply from 192.168.1.16: bytes=32 time<1ms TTL=128
Reply from 192.168.1.16: bytes=32 time<1ms TTL=128
Reply from 192.168.1.16: bytes=32 time<1ms TTL=128

Ping statistics for 192.168.1.16:
    Packets: Sent = 4, Received = 4, Lost = 0 (0% loss),
    Approximate round trip times in milli-seconds:
        Minimum = 0ms, Maximum = 0ms, Average = 0ms

C:\>
    
```

Figure 3 – Test Ping

Figure 5 is a snapshot of My Network Places within Windows XP Professional. This displays the domain that we are using for our network (Eadsfence).

# Implementing an Active Directory Network

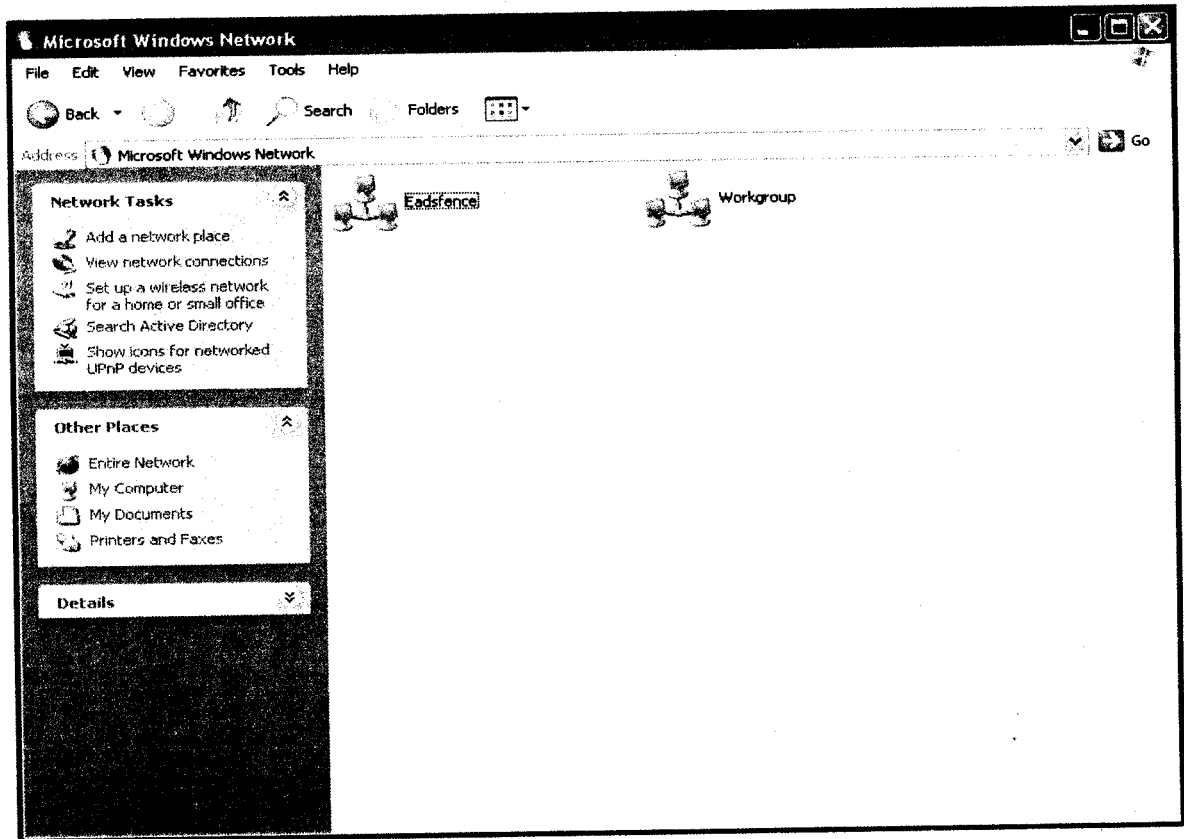


Figure 4 – My Network Places

As you will see in Figure 6, we currently have 17 workstations connected to our domain as well as one server in which the domain is being hosted. Further, this also proves connectivity between the systems within the network

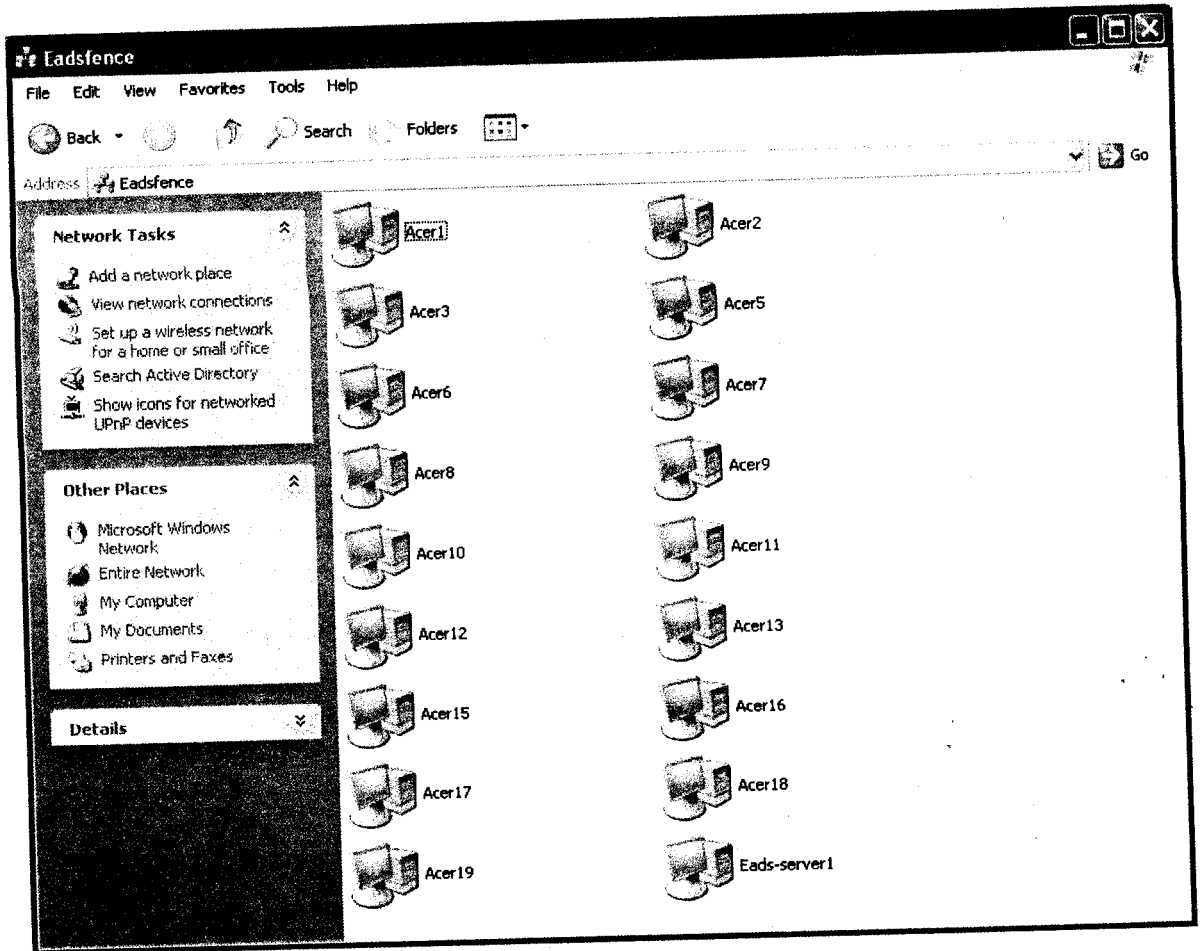


Figure 5 – Computers in Directory

## 5. Testing

Although we have previously shown that we have connectivity between our computers in the above section, you will also find below an example of our default group policy which is currently being applied to all users in Appendix A4. Also, we plan to complement our security in group policy by further locking down particular ports on our firewall. We will be able to figure out which ports are open by utilizing a port scanner and scanning our network from both the inside and outside of our network. An example of our internal port scan can be seen on the following page in Figure 7. To perform this task, we will be making use of a free port-scanner application called GFI Languard that

## Implementing an Active Directory Network

we obtained on the Internet (<http://www.gfi.com/>). Using this port scanner, we are confident that we will be able to secure our network in an effective way.

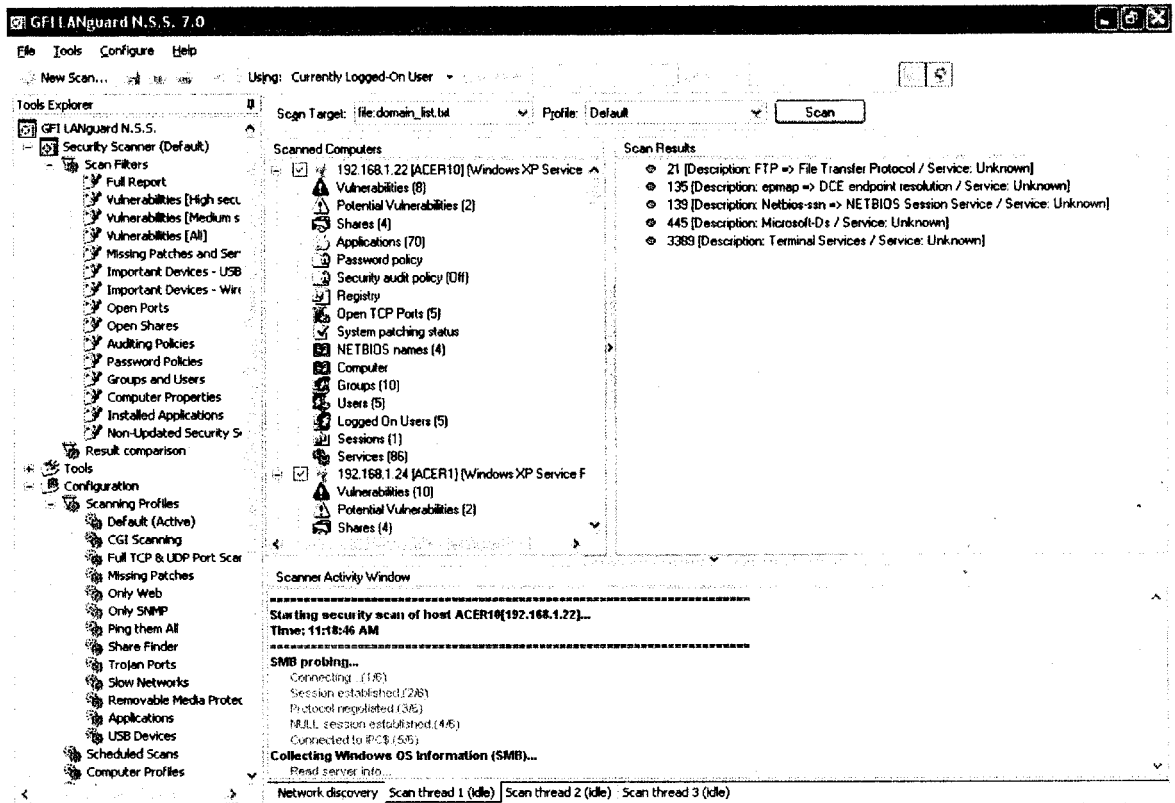


Figure 6 – GFI LANguard Port Scan Example

## 6. Deliverables

Through the course of this project, we plan to be able to have our network have the following capabilities:

### 6.1 Single Sign-on Environment

Each user who requires access to the network or any computer will be required to have a login name and password. This single name and password will be used across all computer systems throughout the network. Additionally, the single sign on will allow the use of redirection through Group Policies enabling all of the users to be able to save to either their desktops or My Documents and access it from any computer. Further, we

## Implementing an Active Directory Network

have enabled roaming profiles across the network so that each user's settings, such as favorites and application settings, follow them as they log into various computers. An example of how we enabled roaming profiles can be seen in Appendix A5. In addition to being able to route users' profiles and files, a single sign on environment provides us with the means to control exactly which resources our users have access to. Further details on this subject can be seen above in our User Profiles section.

### **6.2 Wireless Connectivity**

There will be many times throughout the life of the business that the use of a computer will not always coincide with being near a network jack to plug into the network. To alleviate this problem, we will be implementing a wireless network with at least two access points and utilizing a WPA based security architecture. At the moment, our main goal is to provide a fast and efficient wireless system throughout the main show room of the business to help facilitate the viewing of files requiring network access for customers.

### **6.3 Backup Solution**

Since all users files will be saved onto the server, a backup solution will be implemented to ensure that all of their files are routinely backed up. Our HP server already has a tape drive included with it that can accept 200GB tapes and since most of our users' files will be relatively small in size, we feel this more than adequately fills the business' backup needs.

### **6.4 Anti-Virus / Anti-Spyware Solution**

Initially, all of our systems came pre-loaded with Norton's Anti-Virus 2006 trial versions, which we used as a temporary virus solution until we were able to attain

## Implementing an Active Directory Network

McAfee's network anti-virus solution. Systems will receive daily updates from McAfee's servers as well as perform routine virus scans of all computers on the network. As spyware has turned from a nuisance to actually being capable of harming the system of which it has infected, we have also decided to deploy an anti-spyware solution in conjunction with our McAfee software. For this, we have decided to use Microsoft's Anti-Spyware because it is a free solution as well as being able to receive daily updates and perform daily scans.

### **6.5 Secure User Desktop**

A computer system is only as secure as what the user has access to. Since people sometimes like to look around on their computers or use certain features that are not in the best interest of the business, we will be deploying group policies throughout our network. Using Group Policy Objects (GPO), we will be able to control not only how the users' desktops look and functions, but also pre-determine some of their settings and configurations. In addition, GPO's offer the ability to restrict access to certain areas of the system such as the local hard drive, control panel, or other security features.

## 7.0 Appendix

## Appendix A1 – Daily Administrative Tasks

**Daily Activities**

GS-01	Run As Shortcuts
GS-02	General Service Status Verification
GS-03	System Event Log Verification
GS-04	Security Event Log Verification
GS-05	Service and Admin Account Management
GS-06	Activity Log Maintenance
BR-01	System State Backup Generation
BR-02	Backup Verification

## Appendix A2 – Weekly Administrative Tasks

**Weekly Activities**

GS-07	Uptime Report Management
GS-08	Script Management
GS-09	Script Certification Management
GS-10	Antivirus Definition Update
GS-11	Server Reboot
HW-01	Network Hardware Checkup
BR-03	Off-site Storage Tape Management

**Appendix A3 – Monthly Administrative Tasks**

<b>Monthly Activities</b>	
GS-12	Security Policy Review/Update
GS-13	Security Patch Verification
GS-14	Service Pack/Hot Fix Update
GS-15	New Software Evaluation
GS-16	Inventory Management
HW-02	Server BIOS Management
HW-03	Firmware and Server Management Software Update Mgmt
BR-04	Disaster Recovery Strategy Testing
BR-05	Restore Procedure Testing
BR-06	Backup Strategy Review
BR-07	Server Rebuild
RA-01	Server RDC Management
RA-02	PC RDC Management

## Appendix A4 – Default Domain Policy Example

<b>Default Domain Policy</b>			
Data collected on: 2/14/2008 5:28:11 PM			
<b>Computer Configuration (Enabled)</b>			
<b>Windows Settings</b>			
<b>Security Settings</b>			
<b>Account Policies/Password Policy</b>			
<b>Policy</b>	<b>Setting</b>		
Enforce password history	4 passwords remembered		
Maximum password age	90 days		
Minimum password age	1 days		
Minimum password length	6 characters		
Password must meet complexity requirements	Disabled		
Store passwords using reversible encryption	Disabled		
<b>Account Policies/Account Lockout Policy</b>			
<b>Policy</b>	<b>Setting</b>		
Account lockout duration	10 minutes		
Account lockout threshold	5 invalid logon attempts		
Reset account lockout counter after	10 minutes		
<b>Account Policies/Kerberos Policy</b>			
<b>Policy</b>	<b>Setting</b>		
Enforce user logon restrictions	Enabled		
Maximum lifetime for service ticket	600 minutes		
Maximum lifetime for user ticket	10 hours		
Maximum lifetime for user ticket renewal	7 days		
Maximum tolerance for computer clock synchronization	5 minutes		
<b>Local Policies/Security Options</b>			
<b>Network Security</b>			
<b>Policy</b>	<b>Setting</b>		
Network security: Force logoff when logon hours expire	Disabled		
<b>Public Key Policies/Autoenrollment Settings</b>			
<b>Policy</b>	<b>Setting</b>		
Enroll certificates automatically	Enabled		
Renew expired certificates, update pending certificates, and remove revoked certificates	Disabled		
Update certificates that use certificate templates	Disabled		
<b>Public Key Policies/Encrypting File System</b>			
<b>Properties</b>			
<b>Policy</b>	<b>Setting</b>		
Allow users to encrypt files using Encrypting File System (EFS)	Enabled		
<b>Certificates</b>			
<b>Issued To</b>	<b>Issued By</b>	<b>Expiration Date</b>	<b>Intended Purposes</b>
Administrator	Administrator	12/26/2008 4:42:44 PM	File Recovery

### Appendix A5 – Enabling Roaming Profiles

**Tony Foster Properties** [?] [X]

Member Of | Dial-in | Environment | Sessions | Remote control  
E-mail Addresses | Exchange features | Exchange features

General | Address | Account | Profile | Telephones | Organization

**User profile**

Profile path: \\eads-server1\Users\ProfileDirectory\Tfoster

Logon script: SBS\_LOGIN\_SCRIPT.bat

**Home folder**

Local path: \_\_\_\_\_

Connect: [v] To: \_\_\_\_\_

OK Cancel Apply Help



## Appendix A7 – Example of Show Running-Configuration command (Firewall)

Note: All items appearing in red indicate purpose of line above and are subject to change

```
pix-eads# show running-config
```

```
: Saved
```

```
:
```

```
PIX Version 6.3(5)
```

```
interface ethernet0 auto
```

```
interface ethernet1 auto
```

```
interface ethernet2 auto
```

```
interface ethernet3 auto
```

```
nameif ethernet0 outside security0
```

-Names our Ethernet0 interface “outside” as well as giving it a security rating of 0 which is relevant in properly configuring access between interfaces. Generally speaking, a device with a higher number is allowed access to devices with lower numbers. If a device with a lower number needs to pass information on to another device with a higher number, than a port must be opened up on the firewall to allow access to the respective device.

```
nameif ethernet1 inside security100
```

```
nameif ethernet2 dmz security10
```

```
nameif ethernet3 dmz2 security15
```

```
enable password sdfkjRRRWYhREsdfkje encrypted
```

- This line shows our password in an encrypted format

```
passwd rTEWAUDYLWcxjVPP encrypted
```

```
hostname pix-eads
```

- This line sets the hostname of the firewall as “pix-eads” for configuration purposes

```
domain-name eadsfence.com
```

- This line tells the firewall which domain that it is acting upon

```
clock timezone EST -5
```

- This command sets the timezone for the firewall’s internal clock

```
fixup protocol ftp 21
```

```
fixup protocol h323 h225 1720
```

```
fixup protocol h323 ras 1718-1719
```

```
fixup protocol http 80
```

```
fixup protocol ils 389
```

```
fixup protocol rsh 514
```

```
fixup protocol rtsp 554
```

```
fixup protocol sip 5060
```

```
fixup protocol sip udp 5060
```

```
fixup protocol skinny 2000
```

```
fixup protocol smtp 25
```

## Implementing an Active Directory Network

- Port 25 is a protocol that is typically used by many hackers to act maliciously upon a user's computer. Port 25 also is used for the sending of email, so it is used rather often in a network. The "fixup" portion of the line activates a function on the firewall called "Mailguard" that acts sort of as a secondary measure of security against hackers who wish to use port 25. Mailguard restricts the use of certain commands that are typically used in SMTP for malicious intent and also for general use. Since some functions can be used for both reasons, Mailguard differentiates between the two to allow the genuine commands through.

fixup protocol sqlnet 1521

names

name 70.61.137.35 eads-server1

- Maps our main server to this external IP address for external access

access-list acl\_out permit tcp 199.218.122.0 255.255.255.0 host eads-server1 eq 3389

- This line allows access through the firewall on port 3389 to the host at the name "eads-server1" as set earlier in the configuration and when the packet type is TCP and from the IP address of 199.218.122.0

access-list acl\_out permit tcp 198.30.98.0 255.255.255.0 host eads-server1 eq 3389

access-list acl\_out permit tcp 198.30.99.0 255.255.255.0 host eads-server1 eq 3389

access-list acl\_out permit tcp any host eads-server1 eq smtp

access-list acl\_out permit tcp any host eads-server1 eq https

pager lines 24

logging on

- This enables logging on our server.

logging trap debugging

- This line enables a level of logging called "debugging," which is the highest level of debugging so that everything is recorded in case and troubleshooting needs to be done.

logging host inside 192.168.1.250

- This tells the server to save all of its log files to the host residing at 192.168.1.250 on the internal network. This IP address is statically mapped to our server later in this configuration file.

mtu outside 1500

- This sets the mtu (Maximum Transmission Units) size to be used on the outside interface

mtu inside 1500

mtu dmz 1500

mtu dmz2 1500

ip address outside 70.61.137.34 255.255.255.240

- This maps our network interface that is accessing the outside world (named "outside" earlier in this configuration file) to an external IP address of 70.61.137.34

ip address inside 192.168.1.1 255.255.255.0

- This maps our network interface that is accessing the internal network with IP address of 192.168.1.1

ip address dmz 192.168.200.1 255.255.255.0

## Implementing an Active Directory Network

```
ip address dmz2 192.168.3.1 255.255.255.0
ip audit info action alarm
ip audit attack action alarm
no failover
failover timeout 0:00:00
failover poll 15
no failover ip address outside
no failover ip address inside
no failover ip address dmz
no failover ip address dmz2
pdm history enable
arp timeout 14400
    - This flushes the ARP (Address Resolution Protocol) table every 14,400 seconds
global (outside) 1 70.61.137.37-70.61.137.45
    - This provides a range of static IP address provided Road Runner to all of our
    internal machines to use when accessing the internet. All devices on the network
    will use one of the addresses listed through NAT (Network Address Translation).
global (outside) 1 70.61.137.46
    - When the number of computers that are accessing the internet outnumber the
    available static IPs assigned by Road Runner, than those computers will all use
    this IP address as it is our designated overload port. This process is achieved by a
    function similar to NAT, but works at the individual port level called PAT (Port
    Address Translation).
nat (inside) 1 192.168.1.0 255.255.255.0 0 0
    - This maps our internal IP addresses to the 192.168.1.0 network for the use of
    NAT so our computers can share our range of IP addresses.
nat (inside) 1 192.168.2.0 255.255.255.0 0 0
    - This allows address in the DMZ to use the 192.168.2.0 network to utilize NAT.
nat (inside) 1 0.0.0.0 0.0.0.0 0 0
static (inside,outside) eads-server1 192.168.1.250 netmask 255.255.255.255 0 0
    - This line maps the external IP address on our outside network connection to our
    statically set server IP address of 192.168.1.250. This is mainly done to more
    easily configure remote access and other network services.
access-group acl_out in interface outside
    - This allows the access-group called "acl_out" to have access on the inbound
    traffic on the outside interface.
route outside 0.0.0.0 0.0.0.0 70.61.137.33 1
timeout xlate 3:00:00
    - This sets the flush time of the translation table to every three hours
timeout conn 1:00:00 half-closed 0:10:00 udp 0:02:00 rpc 0:10:00 h225 1:00:00
timeout h323 0:05:00 mgcp 0:05:00 sip 0:30:00 sip_media 0:02:00
timeout uauth 0:05:00 absolute
aaa-server TACACS+ protocol tacacs+
aaa-server RADIUS protocol radius
aaa-server LOCAL protocol local
```

## Implementing an Active Directory Network

- These three “aaa” lines are all defaulted into the firewall by Cisco. However, we will not be making of any of these options at this time.
- ntp server 192.168.1.250 source inside
- This maps the NTP (Network Time Protocol) server to the time set on the device at the IP address of 192.168.1.250 (our server). Therefore, we can be sure that our server and firewall are synched together.
- http server enable
- This enables the web interface for remote access to the firewall. This can be useful when trying to configure the firewall from a remote location so that an administrator can centrally manage several firewalls from one location.
- http 192.168.1.1 255.255.255.255 inside
- This forwards all web access firewall management packets to the IP address of the firewall.
- no snmp-server location
- no snmp-server contact
- snmp-server community public
- no snmp-server enable traps
- floodguard enable
- telnet 192.168.1.250 255.255.255.255 inside
- This line allows access via Telnet into the server for firewall management only from a device at the IP address of 192.168.1.250 on the internal network.
- telnet timeout 5
- This line simply tells the firewall to disconnect any telnet sessions after five minutes of inactivity.
- ssh timeout 5
- This line tells the firewall to disconnect any ssh sessions after five minutes of inactivity.
- console timeout 0
- This line indicates to the firewall to never timeout a session when using the console.
- dhcpd address 192.168.1.10-192.168.1.100 inside
- This line allows the firewall to use a range of 90 IP addresses between 192.168.10 – 192.168.1.100 to dynamically assign IP address to any device sending a DHCP Discover packet to it on the internal network.
- dhcpd dns 24.29.1.218 24.29.1.219
- These two IP address are the DNS servers that a device must use to translate IP address to names and vice-versa. However, the “dhcpd” portion of the command tells the DHCP server to include this information with the IP assignment of a device.
- dhcpd lease 3600
- This line sets the lease time for an IP address to 3600 minutes.
- dhcpd ping\_timeout 750
- This command sets the time it takes for a ping to register as a timeout
- dhcpd domain eadsfence.com
- This line passes along the domain of the network along with the DHCP signal.
- terminal width 80
- This line sets the number of pixels of the width of a terminal session

Cryptochecksum: \*removed for security purposes\*  
: end

### Appendix A8 – Example of the Show ARP command (Firewall)

```
pix-eads# show arp
  outside 70.61.137.33 0014.a46d.edcd
  inside 192.168.1.250 0013.21fc.a344
  inside 192.168.1.29 0014.8550.a536
  inside 192.168.1.20 0014.8551.f964
  inside 192.168.1.12 0001.6ce3.20c7
  inside 192.168.1.11 0001.6cd4.91ce
  inside 192.168.1.30 0014.2aaa.81f1
  inside 192.168.1.24 0014.8552.58cc
```

### Appendix A9 – Example of the Show Access-List command (Firewall)

```
pix-eads# show access-list
access-list cached ACL log flows: total 0, denied 0 (deny-flow-max 4096)
  alert-interval 300
access-list acl_out; 5 elements
access-list acl_out line 1 permit tcp 199.218.122.0 255.255.255.0 host eads-server1 eq
3389 (hitcnt=0)
access-list acl_out line 2 permit tcp 198.30.98.0 255.255.255.0 host eads-server1 eq 3389
(hitcnt=0)
access-list acl_out line 3 permit tcp 198.30.99.0 255.255.255.0 host eads-server1 eq 3389
(hitcnt=0)
access-list acl_out line 4 permit tcp any host eads-server1 eq smtp (hitcnt=4)
access-list acl_out line 5 permit tcp any host eads-server1 eq https (hitcnt=0)
```

### Appendix A10 – Example of the Show Running-Config command (Switch)

```
eads-switch#show running-config
Building configuration...
```

Current configuration:

```
!
version 12.0
no service pad
service timestamps debug uptime
service timestamps log uptime
service password-encryption
!
hostname eads-switch
!
enable secret 5 *removed for security purposes*
!
```

## Implementing an Active Directory Network

```
ip subnet-zero
cluster enable eads 0
!
interface FastEthernet0/1
  switchport access vlan 100
  spanning-tree portfast
!
interface FastEthernet0/2
  switchport access vlan 100
  spanning-tree portfast
```

.....  
The information for ports 3 – 45 have been removed as they are redundant to this section  
with only the port number changing to reflect the appropriate port.  
.....

```
interface FastEthernet0/46
  switchport access vlan 100
  spanning-tree portfast
!
interface FastEthernet0/47
  switchport access vlan 100
  spanning-tree portfast
!
interface FastEthernet0/48
  switchport access vlan 100
  spanning-tree portfast
!
interface GigabitEthernet0/1
!
interface GigabitEthernet0/2
!
interface VLAN1
  ip address 192.168.1.254 255.255.255.0
  no ip directed-broadcast
  ip nat outside
!
ip default-gateway 192.168.1.1
ip nat inside source list 199 interface VLAN1 overload
access-list 199 dynamic Cluster-NAT permit ip any any
snmp-server engineID local 00000009020000065314C000
snmp-server community private RW
snmp-server community public RO
snmp-server community private@es0 RW
snmp-server community public@es0 RO
!
line con 0
  transport input none
```

## Implementing an Active Directory Network

```

stopbits 1
line vty 0 4
password 7 0608002F494B081D16
login
line vty 5 15
password 7 000A1C08015E0A021C
login
!
End

```

### Appendix A11 – Example of the Show VLAN command (Switch)

eads-switch#show VLAN

VLAN Name	Status	Ports
1 default	active	Gi0/1, Gi0/2
100 VLAN0100	active	Fa0/1, Fa0/2, Fa0/3, Fa0/4, Fa0/5, Fa0/6, Fa0/7, Fa0/8, Fa0/9, Fa0/10, Fa0/11, Fa0/12, Fa0/13, Fa0/14, Fa0/15, Fa0/16, Fa0/17, Fa0/18, Fa0/19, Fa0/20, Fa0/21, Fa0/22, Fa0/23, Fa0/24, Fa0/25, Fa0/26, Fa0/27, Fa0/28, Fa0/29, Fa0/30, Fa0/31, Fa0/32, Fa0/33, Fa0/34, Fa0/35, Fa0/36, Fa0/37, Fa0/38, Fa0/39, Fa0/40, Fa0/41, Fa0/42, Fa0/43, Fa0/44, Fa0/45, Fa0/46, Fa0/47, Fa0/48
1002 fddi-default	active	
1003 token-ring-default	active	
1004 fddinet-default	active	
1005 trnet-default	active	

VLAN Type	SAID	MTU	Parent	RingNo	BridgeNo	Stp	BrdgMode	Trans1	Trans2
1	enet 100001	1500	-	-	-	-	0	0	
100	enet 100100	1500	-	-	-	-	0	0	
1002	fddi 101002	1500	-	-	-	-	0	0	
1003	tr 101003	1500	-	-	-	-	0	0	
1004	fdnet 101004	1500	-	-	-	ieee	0	0	
1005	trnet 101005	1500	-	-	-	ibm	0	0	

**Appendix A12 – Example of the Show xlate command (Firewall)**

```
pix-eads# show xlate
9 in use, 9 most used
Global eads-server1 Local 192.168.1.250
Global 70.61.137.44 Local 192.168.1.16
Global 70.61.137.40 Local 192.168.1.15
Global 70.61.137.41 Local 192.168.1.11
Global 70.61.137.43 Local 192.168.1.12
Global 70.61.137.39 Local 192.168.1.29
Global 70.61.137.42 Local 192.168.1.30
Global 70.61.137.38 Local 192.168.1.24
Global 70.61.137.37 Local 192.168.1.20
```

## **Appendix A13 – Disaster Recovery Plan**

The formation of a disaster recovery plan is an essential and fundamental step to establishing a well rounded and functional network. Anything from a fire to a tornado can completely destroy a business' physical location as well as all of the equipment stored on the property. The data is only good so long as it is accessible even in the event of a disaster. Therefore, the insurance of the business' data is vital to the survival of the business itself. While the financing does not exist for the company to establish either a hot or even cold site, other backup measures must take place in one form or another.

### **Tape Backup**

We will be utilizing a tape backup that was built into our server to provide all of our backup needs for the business. All backups will be saved onto 80-GB DLT Backup tapes and will be managed through Symantec's Backup Exec 10 to more easily facilitate our backup scheduling to insure the most recent backups of our users' data is valid.

### **Schedule**

We are currently employing a backup schedule that includes both periodical incremental backups in addition to a weekly backup. A full backup of the server is performed weekly every Friday with an incremental done every Monday – Thursday to insure the capture of the most recent data that the users produce. Further, a 3<sup>rd</sup> party will physically take the full backup tape off-site in case any type of disaster wipes out the business' physical location. Therefore, at least some form of recovery will still be possible no matter what happens to the business.

## Appendix B Microsoft Windows XP Installation Documentation

Date: May 6, 2006

### Basic Information

Operating System		Windows XP Professional		
Computer Name		Acer1		
Product Version		Serviced Pack 2	NetBios Name	Acer1
Organization	Ead's Fence	Installation Date	December 30, 2005	

### Physical Section

Memory	1024 MB			
Physical Disk (1) Capacity	38.22 GB			
Physical Disk (2) Capacity	38.63 GB			
Logical Disks Capacity				
Network Interface Card (1)	Realtek RTL8139/810x Family Fast Ethernet NIC			

### Windows Configuration

Product Key	BW2VG-XXDY6-VW3P7-YHQQ6-C7RYM		Time Zone	(GMT-05:00) Eastern time (US & Canada)	
Administrative Account	Administrator		Password	*****	
Country or Region	United States of America		Area Code	513	
Regional Settings	English (United States)		Language Group	Western Europe and United States	
Display Colors	Use Windows Default	Display Screen Area	Use Windows Default	Display Refresh Frequency	Use Windows Default
Domain/Workgroup Name	EADSFENCE				
Protocol(s)	TCP/IP				
Computer TCP/IP Address (1)	192.168.1.24	Subnet	192.168.1.0		
DNS Server #1	192.168.1.250				
DHCP Configuration	<input checked="" type="checkbox"/> Yes	<input type="checkbox"/> No	Gateway Address	192.168.1.1	
Automatic Updates	<input checked="" type="checkbox"/> Enabled: <day>/<time>		<input type="checkbox"/> Download Only	<input type="checkbox"/> Notify Only	<input checked="" type="checkbox"/> Disabled

**Windows Components (Bold – Default Components; ☒ - Installed)**

<input checked="" type="checkbox"/> <b>Accessories and Utilities</b>	<input type="checkbox"/> Internet Information Service (IIS)	<input type="checkbox"/> Message Queuing
<input checked="" type="checkbox"/> <b>Accessories</b>	<input type="checkbox"/> Common Files	<input type="checkbox"/> Active Directory Integration
<input checked="" type="checkbox"/> Calculator	<input type="checkbox"/> Documentation	<input type="checkbox"/> Common
<input checked="" type="checkbox"/> Character Map	<input type="checkbox"/> File Transfer Protocol (FTP) Service	<input type="checkbox"/> Core Functionality
<input checked="" type="checkbox"/> Clipboard Viewer	<input type="checkbox"/> FrontPage 2000 Server Extensions	<input type="checkbox"/> Local Storage
<input checked="" type="checkbox"/> Desktop Wallpaper	<input type="checkbox"/> Internet Information Services Snap-In	<input type="checkbox"/> MSMQ HTTP Support
<input checked="" type="checkbox"/> Document Templates	<input type="checkbox"/> SMTP Service	<input type="checkbox"/> Triggers
<input checked="" type="checkbox"/> Mouse Pointers	<input type="checkbox"/> SMTP Service	<input checked="" type="checkbox"/> <b>MSN Explorer</b>
<input checked="" type="checkbox"/> Paint	<input type="checkbox"/> World Wide Web Service	<input checked="" type="checkbox"/> <b>Networking Services</b>
<input checked="" type="checkbox"/> <b>Games</b>	<input type="checkbox"/> Printers virtual directory	<input checked="" type="checkbox"/> <b>Internet Gateway Device Discovery and Control Client</b>
<input checked="" type="checkbox"/> Freecell	<input type="checkbox"/> Remote Desktop Web Connection	<input type="checkbox"/> Peer-to-Peer
<input checked="" type="checkbox"/> Hearts	<input type="checkbox"/> Scripts virtual directory	<input type="checkbox"/> RIP Listener
<input checked="" type="checkbox"/> Internet Games	<input type="checkbox"/> World Wide Web Service	<input type="checkbox"/> Simple TCP/IP Services
<input checked="" type="checkbox"/> Minesweeper	<input type="checkbox"/> Management and Monitoring Tools	<input type="checkbox"/> UPnP User Interface
<input checked="" type="checkbox"/> Solitaire	<input type="checkbox"/> Simple Network Management Protocol	<input type="checkbox"/> Other Network File and Print Services
<input checked="" type="checkbox"/> Spider Solitaire	<input type="checkbox"/> WMI SNMP Provider	<input type="checkbox"/> Print Services for UNIX
<input type="checkbox"/> Fax Services		<input checked="" type="checkbox"/> <b>Outlook Express</b>
<input checked="" type="checkbox"/> Indexing Service		<input checked="" type="checkbox"/> <b>Update Root Certificates</b>
<input checked="" type="checkbox"/> Internet Explorer		<input checked="" type="checkbox"/> <b>Windows Media Player</b>
		<input checked="" type="checkbox"/> <b>Windows Messenger</b>

**Installed Applications**

Microsoft - Office Small Business Edition 2003		
Microsoft - Internet Explorer		
Microsoft - Office Access 2003		
Microsoft - Office Excel 2003		
Microsoft - Office Word 2003		
Microsoft - Office Publisher 2003		
Microsoft - Office PowerPoint 2003		
Windows Defender		
Network Associates VirusScan Enterprise Version 8.0.0		
NTI CD&DVD Maker 7		
Adobe Acrobat Version 7		
Cyberlink PowerDVD		
MapPoint North America 2004		
Autodesk DWF Viewer		
Java(TM) 2 Platform Standard Edition 5.0 Update 6		

**Windows Services (Bold – Default Services; ☒ - Installed)**

<input checked="" type="checkbox"/> <b>Alerter</b>	<input type="checkbox"/> Message Queuing Triggers	<input checked="" type="checkbox"/> <b>Security Accounts Manager</b>	<input checked="" type="checkbox"/> <b>WMI Performance Adapter</b>
<input checked="" type="checkbox"/> <b>Application Layer Gateway Service</b>	<input checked="" type="checkbox"/> <b>Messenger</b>	<input checked="" type="checkbox"/> <b>Security Center</b>	<input checked="" type="checkbox"/> <b>Workstation</b>
<input checked="" type="checkbox"/> <b>Application Management</b>	<input checked="" type="checkbox"/> <b>MS Software Shadow Copy Provider</b>	<input checked="" type="checkbox"/> <b>Server</b>	<input type="checkbox"/> World Wide Web Publishing
<input checked="" type="checkbox"/> <b>Automatic Updates</b>	<input checked="" type="checkbox"/> <b>Net Logon</b>	<input checked="" type="checkbox"/> <b>Shell Hardware Detection</b>	<b>OTHER:</b>
<input checked="" type="checkbox"/> <b>Background Intelligent Transfer Service</b>	<input checked="" type="checkbox"/> <b>NetMeeting Remote Desktop Sharing</b>	<input type="checkbox"/> Simple Mail Transport Protocol (SMTP)	<input type="checkbox"/>
<input checked="" type="checkbox"/> <b>Clipboard</b>	<input checked="" type="checkbox"/> <b>Network Connections</b>	<input type="checkbox"/> Simple TCP/IP Services	<input type="checkbox"/>
<input checked="" type="checkbox"/> <b>COM+ Event System</b>	<input checked="" type="checkbox"/> <b>Network DDE</b>	<input checked="" type="checkbox"/> <b>Smart Card</b>	<input type="checkbox"/>
<input checked="" type="checkbox"/> <b>COM+ System Application</b>	<input checked="" type="checkbox"/> <b>Network DDE DSDM</b>	<input type="checkbox"/> SNMP Service	<input type="checkbox"/>
<input checked="" type="checkbox"/> <b>Computer Browser</b>	<input checked="" type="checkbox"/> <b>Network Location Awareness (NLA)</b>	<input type="checkbox"/> SNMP Trap Service	<input type="checkbox"/>
<input checked="" type="checkbox"/> <b>Cryptographic Services</b>	<input checked="" type="checkbox"/> <b>Network Provisioning Service</b>	<input checked="" type="checkbox"/> <b>SSDP Discovery Service</b>	<input type="checkbox"/>
<input checked="" type="checkbox"/> <b>DCOM Server Process Launcher</b>	<input checked="" type="checkbox"/> <b>NT LM Security Support Provider</b>	<input checked="" type="checkbox"/> <b>System Event Notification</b>	<input type="checkbox"/>
<input checked="" type="checkbox"/> <b>DHCP Client</b>	<input type="checkbox"/> Peer Name Resolution Protocol	<input checked="" type="checkbox"/> <b>System Restore Service</b>	<input type="checkbox"/>
<input checked="" type="checkbox"/> <b>Distributed Link Tracking Client</b>	<input type="checkbox"/> Peer Networking	<input checked="" type="checkbox"/> <b>Task Scheduler</b>	<input type="checkbox"/>
<input checked="" type="checkbox"/> <b>Distributed Transaction Coordinator</b>	<input type="checkbox"/> Peer Networking Group Authentication	<input checked="" type="checkbox"/> <b>TCP/IP NetBIOS Helper</b>	<input type="checkbox"/>
<input checked="" type="checkbox"/> <b>DNS Client</b>	<input type="checkbox"/> Peer Networking Identity Manager	<input type="checkbox"/> TCP/IP Print Server	<input type="checkbox"/>
<input checked="" type="checkbox"/> <b>Error Reporting Service</b>	<input checked="" type="checkbox"/> <b>Performance Logs and Alerts</b>	<input checked="" type="checkbox"/> <b>Telephony</b>	<input type="checkbox"/>
<input checked="" type="checkbox"/> <b>Event Log</b>	<input checked="" type="checkbox"/> <b>Plug and Play</b>	<input checked="" type="checkbox"/> <b>Telnet</b>	<input type="checkbox"/>
<input checked="" type="checkbox"/> <b>Fast User Switching Compatibility</b>	<input checked="" type="checkbox"/> <b>Portable Media Serial Number</b>	<input checked="" type="checkbox"/> <b>Terminal Services</b>	<input type="checkbox"/>
<input type="checkbox"/> Fax	<input checked="" type="checkbox"/> <b>Print Spooler</b>	<input checked="" type="checkbox"/> <b>Themes</b>	<input type="checkbox"/>
<input type="checkbox"/> FTP Publishing	<input checked="" type="checkbox"/> <b>Protected Storage</b>	<input checked="" type="checkbox"/> <b>Uninterruptible Power Supply</b>	<input type="checkbox"/>
<input checked="" type="checkbox"/> <b>Help and Support</b>	<input checked="" type="checkbox"/> <b>QoS RSVP</b>	<input checked="" type="checkbox"/> <b>Universal Plug and Play Device Host</b>	<input type="checkbox"/>
<input checked="" type="checkbox"/> <b>HTTP SSL</b>	<input checked="" type="checkbox"/> <b>Remote Access Auto Connection Manager</b>	<input checked="" type="checkbox"/> <b>Volume Shadow Copy</b>	<input type="checkbox"/>
<input checked="" type="checkbox"/> <b>Human Interface Device Access</b>	<input checked="" type="checkbox"/> <b>Remote Access Connection Manager</b>	<input checked="" type="checkbox"/> <b>WebClient</b>	<input type="checkbox"/>
<input type="checkbox"/> IIS Admin	<input checked="" type="checkbox"/> <b>Remote Desktop Help Session Manager</b>	<input checked="" type="checkbox"/> <b>Windows Audio</b>	<input type="checkbox"/>
<input checked="" type="checkbox"/> <b>IMAPI CD-Burning COM Service</b>	<input checked="" type="checkbox"/> <b>Remote Procedure Call (RPC)</b>	<input checked="" type="checkbox"/> <b>Windows Firewall/Internet Connection Sharing (ICS)</b>	<input type="checkbox"/>
<input checked="" type="checkbox"/> <b>Indexing Service</b>	<input checked="" type="checkbox"/> <b>Remote Procedure Call (RPC) Locator</b>	<input checked="" type="checkbox"/> <b>Windows Image Acquisition (WIA)</b>	<input type="checkbox"/>
<input checked="" type="checkbox"/> <b>IPSEC Services</b>	<input checked="" type="checkbox"/> <b>Remote Registry</b>	<input checked="" type="checkbox"/> <b>Windows Installer</b>	<input type="checkbox"/>
<input type="checkbox"/> IPv6 Helper	<input checked="" type="checkbox"/> <b>Removable Storage</b>	<input checked="" type="checkbox"/> <b>Windows Management Instrumentation (WMI)</b>	<input type="checkbox"/>
<input checked="" type="checkbox"/> <b>Logical Disk Manager</b>	<input type="checkbox"/> RIP Listener	<input checked="" type="checkbox"/> <b>WMI Driver Extensions</b>	<input type="checkbox"/>
<input checked="" type="checkbox"/> <b>Logical Disk Manager Administrative Service</b>	<input checked="" type="checkbox"/> <b>Routing and Remote Access</b>	<input checked="" type="checkbox"/> <b>Windows Time</b>	<input type="checkbox"/>
<input type="checkbox"/> Message Queuing	<input checked="" type="checkbox"/> <b>Secondary Logon</b>	<input checked="" type="checkbox"/> <b>Wireless Zero Configuration</b>	<input type="checkbox"/>

**Installed Patches and Updates**

KB867282	KB898461	M886903
KB873339	KB899587	KB911565
KB885250	KB899589	KB911565
KB885835	KB899591	KB911565
KB885836	KB900485	KB911564
KB886185	KB900725	
KB887472	KB901017	
KB887742	KB901190	
KB888113	KB901214	
KB888302	KB902400	
KB890046	KB904706	
KB890047	KB905414	
KB890859	KB905749	
KB891781	KB905915	
KB893066	KB908519	
KB893756	KB908531	
KB893803V2	KB910437	
KB894391	KB911562	
KB896358	KB911567	
KB896422	KB911927	
KB896423	KB912812	
KB896424	KB912919	
KB896428	KB913446	

Date: May 6, 2006

### Basic Information

Operating System	Windows XP Professional	NetBios Name	Acer2
Computer Name	Acer2	Installation Date	December 30, 2005
Product Version	Serviced Pack 2		
Organization	Ead's Fence		

### Physical Section

Memory	512 MB
Physical Disk (1) Capacity	38.34 GB
Physical Disk (2) Capacity	38.52 GB
Logical Disks Capacity	
Network Interface Card (1)	SiS 900-Based PCI Fast Ethernet Adapter

### Windows Configuration

Product Key	BW2VG-XXDY6-VW3P7-YHQQ6-C7RYM		Time Zone	(GMT-05:00) Eastern time (US & Canada)	
Administrative Account	Administrator		Password	*****	
Country or Region	United States of America		Area Code	513	
Regional Settings	English (United States)		Language Group	Western Europe and United States	
Display Colors	Use Windows Default	Display Screen Area	Use Windows Default	Display Refresh Frequency	Use Windows Default
Domain/Workgroup Name	EADSFENCE				
Protocol(s)	TCP/IP				
Computer TCP/IP Address (1)	192.168.1.11	Subnet	<default>		
DNS Server #1	192.168.1.250				
DHCP Configuration	<input checked="" type="checkbox"/> Yes	<input type="checkbox"/> No	Gateway Address	192.168.1.1	
Automatic Updates	<input checked="" type="checkbox"/> Enabled: Daily / 3:00 A.M. <input type="checkbox"/> Download Only <input type="checkbox"/> Notify Only <input type="checkbox"/> Disabled				

**Windows Components (Bold – Default Components; ☒ - Installed)**

- ☒ **Accessories and Utilities**
  - ☒ **Accessories**
    - ☒ **Calculator**
    - ☒ **Character Map**
    - ☒ **Clipboard Viewer**
    - ☒ **Desktop Wallpaper**
    - ☒ **Document Templates**
    - ☒ **Mouse Pointers**
    - ☒ **Paint**
  - ☒ **Games**
    - ☒ **Freecell**
    - ☒ **Hearts**
    - ☒ **Internet Games**
    - ☒ **Minesweeper**
    - ☒ **Solitaire**
    - ☒ **Spider Solitaire**
  - Fax Services
  - ☒ **Indexing Service**
  - ☒ **Internet Explorer**

- Internet Information Service (IIS)**
  - Common Files
  - Documentation
  - File Transfer Protocol (FTP) Service
  - FrontPage 2000 Server Extensions
  - Internet Information Services Snap-In
  - SMTP Service
  - SMTP Service
  - World Wide Web Service
    - Printers virtual directory
    - Remote Desktop Web Connection
    - Scripts virtual directory
    - World Wide Web Service
- Management and Monitoring Tools**
  - Simple Network Management Protocol
  - WMI SNMP Provider

- Message Queuing**
  - Active Directory Integration
  - Common
    - Core Functionality
    - Local Storage
  - MSMQ HTTP Support
  - Triggers
- ☒ **MSN Explorer**
- ☒ **Networking Services**
  - ☒ **Internet Gateway Device Discovery and Control Client**
  - Peer-to-Peer
  - RIP Listener
  - Simple TCP/IP Services
  - UPnP User Interface
  - Other Network File and Print Services
    - Print Services for UNIX
- ☒ **Outlook Express**
- ☒ **Update Root Certificates**
- ☒ **Windows Media Player**
- ☒ **Windows Messenger**

**Installed Applications**

- Microsoft - Office Small Business Edition 2003
- Microsoft - Internet Explorer
- Microsoft - Office Access 2003
- Microsoft - Office Excel 2003
- Microsoft - Office Word 2003
- Microsoft - Office Publisher 2003
- Microsoft - Office PowerPoint 2003
- Windows Defender
- Network Associates VirusScan Enterprise Version 8.0.0
- NTI CD&DVD Maker 7
- Adobe Acrobat Version 7
- Cyberlink PowerDVD

**Windows Services (Bold – Default Services;  - Installed)**

- |  |  |   |  |
|--|--|---|--|
| <input checked="" type="checkbox"/> <b>Alerter</b>                                     | <input type="checkbox"/> Message Queuing Triggers                                | <input checked="" type="checkbox"/> <b>Security Accounts Manager</b>                          | <input checked="" type="checkbox"/> <b>WMI Performance Adapter</b> |
| <input checked="" type="checkbox"/> <b>Application Layer Gateway Service</b>           | <input checked="" type="checkbox"/> <b>Messenger</b>                             | <input checked="" type="checkbox"/> <b>Security Center</b>                                    | <input checked="" type="checkbox"/> <b>Workstation</b>             |
| <input checked="" type="checkbox"/> <b>Application Management</b>                      | <input checked="" type="checkbox"/> <b>MS Software Shadow Copy Provider</b>      | <input checked="" type="checkbox"/> <b>Server</b>   | <input type="checkbox"/> World Wide Web Publishing                 |
| <input checked="" type="checkbox"/> <b>Automatic Updates</b>                           | <input checked="" type="checkbox"/> <b>Net Logon</b>                             | <input checked="" type="checkbox"/> <b>Shell Hardware Detection</b>                           | <b>OTHER:</b>  |
| <input checked="" type="checkbox"/> <b>Background Intelligent Transfer Service</b>     | <input checked="" type="checkbox"/> <b>NetMeeting Remote Desktop Sharing</b>     | <input type="checkbox"/> Simple Mail Transport Protocol (SMTP)                                | <input type="checkbox"/>   |
| <input checked="" type="checkbox"/> <b>Clipbook</b>                                    | <input checked="" type="checkbox"/> <b>Network Connections</b>                   | <input type="checkbox"/> Simple TCP/IP Services   | <input type="checkbox"/>   |
| <input checked="" type="checkbox"/> <b>COM+ Event System</b>                           | <input checked="" type="checkbox"/> <b>Network DDE</b>                           | <input checked="" type="checkbox"/> <b>Smart Card</b>   | <input type="checkbox"/>   |
| <input checked="" type="checkbox"/> <b>COM+ System Application</b>                     | <input checked="" type="checkbox"/> <b>Network DDE DSDM</b>                      | <input type="checkbox"/> SNMP Service   | <input type="checkbox"/>   |
| <input checked="" type="checkbox"/> <b>Computer Browser</b>                            | <input checked="" type="checkbox"/> <b>Network Location Awareness (NLA)</b>      | <input type="checkbox"/> SNMP Trap Service  | <input type="checkbox"/>   |
| <input checked="" type="checkbox"/> <b>Cryptographic Services</b>                      | <input checked="" type="checkbox"/> <b>Network Provisioning Service</b>          | <input checked="" type="checkbox"/> <b>SSDP Discovery Service</b>                             | <input type="checkbox"/>   |
| <input checked="" type="checkbox"/> <b>DCOM Server Process Launcher</b>                | <input checked="" type="checkbox"/> <b>NT LM Security Support Provider</b>       | <input checked="" type="checkbox"/> <b>System Event Notification</b>                          | <input type="checkbox"/>   |
| <input checked="" type="checkbox"/> <b>DHCP Client</b>                                 | <input type="checkbox"/> Peer Name Resolution Protocol                           | <input checked="" type="checkbox"/> <b>System Restore Service</b>                             | <input type="checkbox"/>   |
| <input checked="" type="checkbox"/> <b>Distributed Link Tracking Client</b>            | <input type="checkbox"/> Peer Networking   | <input checked="" type="checkbox"/> <b>Task Scheduler</b>                                     | <input type="checkbox"/>   |
| <input checked="" type="checkbox"/> <b>Distributed Transaction Coordinator</b>         | <input type="checkbox"/> Peer Networking Group Authentication                    | <input checked="" type="checkbox"/> <b>TCP/IP NetBIOS Helper</b>                              | <input type="checkbox"/>   |
| <input checked="" type="checkbox"/> <b>DNS Client</b>                                  | <input type="checkbox"/> Peer Networking Identity Manager                        | <input type="checkbox"/> TCP/IP Print Server  | <input type="checkbox"/>   |
| <input checked="" type="checkbox"/> <b>Error Reporting Service</b>                     | <input checked="" type="checkbox"/> <b>Performance Logs and Alerts</b>           | <input checked="" type="checkbox"/> <b>Telephony</b>  | <input type="checkbox"/>   |
| <input checked="" type="checkbox"/> <b>Event Log</b>                                   | <input checked="" type="checkbox"/> <b>Plug and Play</b>                         | <input checked="" type="checkbox"/> <b>Teinet</b>   | <input type="checkbox"/>   |
| <input checked="" type="checkbox"/> <b>Fast User Switching Compatibility</b>           | <input checked="" type="checkbox"/> <b>Portable Media Serial Number</b>          | <input checked="" type="checkbox"/> <b>Terminal Services</b>                                  | <input type="checkbox"/>   |
| <input type="checkbox"/> <b>Fax</b>  | <input checked="" type="checkbox"/> <b>Print Spooler</b>                         | <input checked="" type="checkbox"/> <b>Themes</b>   | <input type="checkbox"/>   |
| <input type="checkbox"/> <b>FTP Publishing</b>   | <input checked="" type="checkbox"/> <b>Protected Storage</b>                     | <input checked="" type="checkbox"/> <b>Uninterruptible Power Supply</b>                       | <input type="checkbox"/>   |
| <input checked="" type="checkbox"/> <b>Help and Support</b>                            | <input checked="" type="checkbox"/> <b>QoS RSVP</b>                              | <input checked="" type="checkbox"/> <b>Universal Plug and Play Device Host</b>                | <input type="checkbox"/>   |
| <input checked="" type="checkbox"/> <b>HTTP SSL</b>                                    | <input checked="" type="checkbox"/> <b>Remote Access Auto Connection Manager</b> | <input checked="" type="checkbox"/> <b>Volume Shadow Copy</b>                                 | <input type="checkbox"/>   |
| <input checked="" type="checkbox"/> <b>Human Interface Device Access</b>               | <input checked="" type="checkbox"/> <b>Remote Access Connection Manager</b>      | <input checked="" type="checkbox"/> <b>WebClient</b>  | <input type="checkbox"/>   |
| <input type="checkbox"/> <b>IIS Admin</b>  | <input checked="" type="checkbox"/> <b>Remote Desktop Help Session Manager</b>   | <input checked="" type="checkbox"/> <b>Windows Audio</b>                                      | <input type="checkbox"/>   |
| <input checked="" type="checkbox"/> <b>IMAPI CD-Burning COM Service</b>                | <input checked="" type="checkbox"/> <b>Remote Procedure Call (RPC)</b>           | <input checked="" type="checkbox"/> <b>Windows Firewall/Internet Connection Sharing (ICS)</b> | <input type="checkbox"/>   |
| <input checked="" type="checkbox"/> <b>Indexing Service</b>                            | <input checked="" type="checkbox"/> <b>Remote Procedure Call (RPC) Locator</b>   | <input checked="" type="checkbox"/> <b>Windows Image Acquisition (WIA)</b>                    | <input type="checkbox"/>   |
| <input checked="" type="checkbox"/> <b>IPSEC Services</b>                              | <input checked="" type="checkbox"/> <b>Remote Registry</b>                       | <input checked="" type="checkbox"/> <b>Windows Installer</b>                                  | <input type="checkbox"/>   |
| <input type="checkbox"/> <b>IPv6 Helper</b>  | <input checked="" type="checkbox"/> <b>Removable Storage</b>                     | <input checked="" type="checkbox"/> <b>Windows Management Instrumentation (WMI)</b>           | <input type="checkbox"/>   |
| <input checked="" type="checkbox"/> <b>Logical Disk Manager</b>                        | <input type="checkbox"/> RIP Listener  | <input checked="" type="checkbox"/> <b>WMI Driver Extensions</b>                              | <input type="checkbox"/>   |
| <input checked="" type="checkbox"/> <b>Logical Disk Manager Administrative Service</b> | <input checked="" type="checkbox"/> <b>Routing and Remote Access</b>             | <input checked="" type="checkbox"/> <b>Windows Time</b>                                       | <input type="checkbox"/>   |
| <input type="checkbox"/> <b>Message Queuing</b>  | <input checked="" type="checkbox"/> <b>Secondary Logon</b>                       | <input checked="" type="checkbox"/> <b>Wireless Zero Configuration</b>                        | <input type="checkbox"/>   |

## Installed Patches and Updates

KB867282	KB898461
KB873339	KB899587
KB885250	KB899589
KB885835	KB899591
KB885836	KB900485
KB886185	KB900725
KB887472	KB901017
KB887742	KB901190
KB888113	KB901214
KB888302	KB902400
KB890046	KB904706
KB890047	KB905414
KB890859	KB905749
KB891781	KB905915
KB893066	KB908519
KB893756	KB908531
KB893803V2	KB910437
KB894391	KB911562
KB896358	KB911567
KB896422	KB911927
KB896423	KB912812
KB896424	KB912919
KB896428	KB913446

M886903
KB911565
KB911565
KB911565
KB911564

Date: May 6, 2006

### Basic Information

Operating System	Windows XP Professional	NetBios Name	Acer3
Computer Name	Acer3	Installation Date	December 30, 2005
Product Version	Serviced Pack 2		
Organization	Ead's Fence		

### Physical Section

Memory	512 MB
Physical Disk (1) Capacity	38.22 GB
Physical Disk (2) Capacity	38.63 GB
Logical Disks Capacity	
Network Interface Card (1)	Realtek RTL8139/810x Family Fast Ethernet NIC

### Windows Configuration

Product Key	BW2VG-XXDY6-VW3P7-YHQQ6-C7RYM		Time Zone	(GMT-05:00) Eastern time (US & Canada)	
Administrative Account	Administrator		Password	*****	
Country or Region	United States of America		Area Code	513	
Regional Settings	English (United States)		Language Group	Western Europe and United States	
Display Colors	Use Windows Default	Display Screen Area	Use Windows Default	Display Refresh Frequency	Use Windows Default
Domain/Workgroup Name	EADSFENCE				
Protocol(s)	TCP/IP				
Computer TCP/IP Address (1)	192.168.1.20	Subnet	192.168.1.0		
DNS Server #1	192.168.1.250				
DHCP Configuration	<input checked="" type="checkbox"/> Yes	<input type="checkbox"/> No	Gateway Address	192.168.1.1	
Automatic Updates	<input checked="" type="checkbox"/> Enabled: Daily / 3:00 A.M. <input type="checkbox"/> Download Only <input type="checkbox"/> Notify Only <input type="checkbox"/> Disabled				

**Windows Components (Bold – Default Components;  - Installed)**

- Accessories and Utilities**
  - Accessories**
    - Calculator
    - Character Map
    - Clipboard Viewer
    - Desktop Wallpaper
    - Document Templates
    - Mouse Pointers
    - Paint
  - Games**
    - Freecell
    - Hearts
    - Internet Games
    - Minesweeper
    - Solitaire
    - Spider Solitaire
  - Fax Services
  - Indexing Service
  - Internet Explorer

- Internet Information Service (IIS)**
  - Common Files
  - Documentation
  - File Transfer Protocol (FTP) Service
  - FrontPage 2000 Server Extensions
  - Internet Information Services Snap-In
  - SMTP Service
    - SMTP Service
  - World Wide Web Service
    - Printers virtual directory
    - Remote Desktop Web Connection
    - Scripts virtual directory
    - World Wide Web Service
- Management and Monitoring Tools**
  - Simple Network Management Protocol
  - WMI SNMP Provider

- Message Queuing**
  - Active Directory Integration
  - Common
    - Core Functionality
    - Local Storage
  - MSMQ HTTP Support
  - Triggers
- MSN Explorer**
- Networking Services**
  - Internet Gateway Device Discovery and Control Client**
    - Peer-to-Peer
    - RIP Listener
    - Simple TCP/IP Services
    - UPnP User Interface
  - Other Network File and Print Services
    - Print Services for UNIX
- Outlook Express**
- Update Root Certificates**
- Windows Media Player**
- Windows Messenger**

**Installed Applications**

Microsoft - Office Small Business Edition 2003

Microsoft - Internet Explorer

Microsoft - Office Access 2003

Microsoft - Office Excel 2003

Microsoft - Office Word 2003

Microsoft - Office Publisher 2003

Microsoft - Office PowerPoint 2003

Windows Defender

Network Associates VirusScan Enterprise Version

8.0.0

NTI CD&DVD Maker 7

Adobe Acrobat Version 7

Cyberlink PowerDVD

Adobe Photoshop CS2

MapPoint North America 2004



**Installed Patches and Updates**

KB867282  
KB873339  
KB885250  
KB885835  
KB885836  
KB886185  
KB887472  
KB887742  
KB888113  
KB888302  
KB890046  
KB890047  
KB890859  
KB891781  
KB893066  
KB893756  
KB893803V2  
KB894391  
KB896358  
KB896422  
KB896423  
KB896424  
KB896428

KB898461  
KB899587  
KB899589  
KB899591  
KB900485  
KB900725  
KB901017  
KB901190  
KB901214  
KB902400  
KB904706  
KB905414  
KB905749  
KB905915  
KB908519  
KB908531  
KB910437  
KB911562  
KB911567  
KB911927  
KB912812  
KB912919  
KB913446

M886903  
KB911565  
KB911565  
KB911565  
KB911564

Date: May 6, 2006

## Basic Information

Operating System	Windows XP Professional	NetBios Name	CMM
Computer Name	CMM	Installation Date	December 30, 2005
Product Version	Serviced Pack 2		
Organization	Ead's Fence		

## Physical Section

Memory	256 MB
Physical Disk (1) Capacity	40.01 GB
Network Interface Card (1)	NETGEAR FA310TX Fast Ethernet Adapter (NGRPCI)

## Windows Configuration

Product Key	BW2VG-XXDY6-VW3P7-YHQQ6-C7RYM	Time Zone	(GMT-05:00) Eastern time (US & Canada)
Administrative Account	Administrator	Password	*****
Country or Region	United States of America	Area Code	513
Regional Settings	English (United States)	Language Group	Western Europe and United States
Display Colors	Use Windows Default	Display Screen Area	Use Windows Default
Display Refresh Frequency	Use Windows Default	Display Refresh Frequency	Use Windows Default
Domain/Workgroup Name	EADSFENCE		
Protocol(s)	TCP/IP		
Computer TCP/IP Address (1)	192.168.1.33	Subnet	192.168.1.0
DNS Server #1	192.168.1.250		
DHCP Configuration	<input checked="" type="checkbox"/> Yes <input type="checkbox"/> No	Gateway Address	192.168.1.1
Automatic Updates	<input checked="" type="checkbox"/> Enabled: Daily/3:00 A.M. <input type="checkbox"/> Download Only <input type="checkbox"/> Notify Only <input type="checkbox"/> Disabled		

**Windows Components (Bold – Default Components; ☒ - Installed)**

- ☒ Accessories and Utilities
  - ☒ Accessories
    - ☒ Calculator
    - ☒ Character Map
    - ☒ Clipboard Viewer
    - ☒ Desktop Wallpaper
    - ☒ Document Templates
    - ☒ Mouse Pointers
    - ☒ Paint
  - ☒ Games
    - ☒ Freecell
    - ☒ Hearts
    - ☒ Internet Games
    - ☒ Minesweeper
    - ☒ Solitaire
    - ☒ Spider Solitaire
  - Fax Services
  - ☒ Indexing Service
  - ☒ Internet Explorer

- Internet Information Service (IIS)
  - Common Files
  - Documentation
  - File Transfer Protocol (FTP) Service
  - FrontPage 2000 Server Extensions
  - Internet Information Services Snap-In
  - SMTP Service
  - SMTP Service
  - World Wide Web Service
    - Printers virtual directory
    - Remote Desktop Web Connection
    - Scripts virtual directory
    - World Wide Web Service
- Management and Monitoring Tools
  - Simple Network Management Protocol
  - WMI SNMP Provider

- Message Queuing
  - Active Directory Integration
  - Common
    - Core Functionality
    - Local Storage
  - MSMQ HTTP Support
  - Triggers
- ☒ MSN Explorer
- ☒ Networking Services
  - ☒ Internet Gateway Device Discovery and Control Client
    - Peer-to-Peer
    - RIP Listener
    - Simple TCP/IP Services
    - UPnP User Interface
  - Other Network File and Print Services
    - Print Services for UNIX
- ☒ Outlook Express
- ☒ Update Root Certificates
- ☒ Windows Media Player
- ☒ Windows Messenger

**Installed Applications**

- Microsoft - Office Small Business Edition 2003
  - Microsoft - Internet Explorer
  - Microsoft - Office Access 2003
  - Microsoft - Office Excel 2003
  - Microsoft - Office Word 2003
  - Microsoft - Office Publisher 2003
  - Microsoft - Office PowerPoint 2003
- Windows Defender
- Network Associates VirusScan Enterprise Version 8.0.0
- NTI CD&DVD Maker 7
- Adobe Acrobat Version 7
- Cyberlink PowerDVD



**Installed Patches and Updates**

KB867282	KB898461	M886903
KB873339	KB899587	KB911565
KB885250	KB899589	KB911565
KB885835	KB899591	KB911565
KB885836	KB900485	KB911564
KB886185	KB900725	
KB887472	KB901017	
KB887742	KB901190	
KB888113	KB901214	
KB888302	KB902400	
KB890046	KB904706	
KB890047	KB905414	
KB890859	KB905749	
KB891781	KB905915	
KB893066	KB908519	
KB893756	KB908531	
KB893803V2	KB910437	
KB894391	KB911562	
KB896358	KB911567	
KB896422	KB911927	
KB896423	KB912812	
KB896424	KB912919	
KB896428	KB913446	

**Date:** May 6, 2006

### Basic Information

Operating System	Windows XP Professional	NetBios Name	Acer5
Computer Name	Acer5	Installation Date	December 30, 2005
Product Version	Serviced Pack 2		
Organization	Ead's Fence		

### Physical Section

Memory	512 MB
Physical Disk (1) Capacity	38.34 GB
Physical Disk (2) Capacity	38.52 GB
Logical Disks Capacity	
Network Interface Card (1)	SiS 900-Based PCI Fast Ethernet Adapter

### Windows Configuration

Product Key	BW2VG-XXDY6-VW3P7-YHQQ6-C7RYM		Time Zone	(GMT-05:00) Eastern time (US & Canada)	
Administrative Account	Administrator		Password	*****	
Country or Region	United States of America		Area Code	513	
Regional Settings	English (United States)		Language Group	Western Europe and United States	
Display Colors	Use Windows Default	Display Screen Area	Use Windows Default	Display Refresh Frequency	Use Windows Default
Domain/Workgroup Name	EADSFENCE				
Protocol(s)	TCP/IP				
Computer TCP/IP Address (1)	192.168.1.21	Subnet	192.168.1.0		
DNS Server #1	192.168.1.250				
DHCP Configuration	<input checked="" type="checkbox"/> Yes	<input type="checkbox"/> No	Gateway Address	192.168.1.1	
Automatic Updates	<input checked="" type="checkbox"/> Enabled: Daily / 3:00A.M. <input type="checkbox"/> Download Only <input type="checkbox"/> Notify Only <input type="checkbox"/> Disabled				

### Windows Components (Bold – Default Components; ☒ - Installed)

- ☒ **Accessories and Utilities**
  - ☒ **Accessories**
    - ☒ **Calculator**
    - ☒ **Character Map**
    - ☒ **Clipboard Viewer**
    - ☒ **Desktop Wallpaper**
    - ☒ **Document Templates**
    - ☒ **Mouse Pointers**
    - ☒ **Paint**
  - ☒ **Games**
    - ☒ **Freecell**
    - ☒ **Hearts**
    - ☒ **Internet Games**
    - ☒ **Minesweeper**
    - ☒ **Solitaire**
    - ☒ **Spider Solitaire**
  - Fax Services
  - ☒ **Indexing Service**
  - ☒ **Internet Explorer**

- Internet Information Service (IIS)**
  - Common Files
  - Documentation
  - File Transfer Protocol (FTP) Service
  - FrontPage 2000 Server Extensions
  - Internet Information Services Snap-In
  - SMTP Service
    - SMTP Service
  - World Wide Web Service
    - Printers virtual directory
    - Remote Desktop Web Connection
    - Scripts virtual directory
    - World Wide Web Service
- Management and Monitoring Tools**
  - Simple Network Management Protocol
  - WMI SNMP Provider

- Message Queuing**
  - Active Directory Integration
  - Common
    - Core Functionality
    - Local Storage
  - MSMQ HTTP Support
  - Triggers
- ☒ **MSN Explorer**
- ☒ **Networking Services**
  - ☒ **Internet Gateway Device Discovery and Control Client**
  - Peer-to-Peer
  - RIP Listener
  - Simple TCP/IP Services
  - UPnP User Interface
  - Other Network File and Print Services
  - Print Services for UNIX
- ☒ **Outlook Express**
- ☒ **Update Root Certificates**
- ☒ **Windows Media Player**
- ☒ **Windows Messenger**

### Installed Applications

- Microsoft - Office Small Business Edition 2003
  - Microsoft - Internet Explorer
  - Microsoft - Office Access 2003
  - Microsoft - Office Excel 2003
  - Microsoft - Office Word 2003
  - Microsoft - Office Publisher 2003
  - Microsoft - Office PowerPoint 2003
- Windows Defender
- Network Associates VirusScan Enterprise Version 8.0.0
- NTI CD&DVD Maker 7
- Adobe Acrobat Version 7
- Cyberlink PowerDVD

# Implementing an Active Directory Network

## Windows Services (Bold – Default Services; - Installed)

- |  |  |   |  |
|--|--|---|--|
| <input checked="" type="checkbox"/> <b>Alerter</b>                                     | <input type="checkbox"/> Message Queuing Triggers                                | <input checked="" type="checkbox"/> <b>Security Accounts Manager</b>                          | <input checked="" type="checkbox"/> <b>WMI Performance Adapter</b> |
| <input checked="" type="checkbox"/> <b>Application Layer Gateway Service</b>           | <input checked="" type="checkbox"/> <b>Messenger</b>                             | <input checked="" type="checkbox"/> <b>Security Center</b>                                    | <input checked="" type="checkbox"/> <b>Workstation</b>             |
| <input checked="" type="checkbox"/> <b>Application Management</b>                      | <input checked="" type="checkbox"/> <b>MS Software Shadow Copy Provider</b>      | <input checked="" type="checkbox"/> <b>Server</b>   | <input type="checkbox"/> World Wide Web Publishing                 |
| <input checked="" type="checkbox"/> <b>Automatic Updates</b>                           | <input checked="" type="checkbox"/> <b>Net Logon</b>                             | <input checked="" type="checkbox"/> <b>Shell Hardware Detection</b>                           | <b>OTHER:</b>  |
| <input checked="" type="checkbox"/> <b>Background Intelligent Transfer Service</b>     | <input checked="" type="checkbox"/> <b>NetMeeting Remote Desktop Sharing</b>     | <input type="checkbox"/> Simple Mail Transport Protocol (SMTP)                                | <input type="checkbox"/>   |
| <input checked="" type="checkbox"/> <b>Clipboard</b>                                   | <input checked="" type="checkbox"/> <b>Network Connections</b>                   | <input type="checkbox"/> Simple TCP/IP Services   | <input type="checkbox"/>   |
| <input checked="" type="checkbox"/> <b>COM+ Event System</b>                           | <input checked="" type="checkbox"/> <b>Network DDE</b>                           | <input checked="" type="checkbox"/> <b>Smart Card</b>   | <input type="checkbox"/>   |
| <input checked="" type="checkbox"/> <b>COM+ System Application</b>                     | <input checked="" type="checkbox"/> <b>Network DDE DSDM</b>                      | <input type="checkbox"/> SNMP Service   | <input type="checkbox"/>   |
| <input checked="" type="checkbox"/> <b>Computer Browser</b>                            | <input checked="" type="checkbox"/> <b>Network Location Awareness (NLA)</b>      | <input type="checkbox"/> SNMP Trap Service  | <input type="checkbox"/>   |
| <input checked="" type="checkbox"/> <b>Cryptographic Services</b>                      | <input checked="" type="checkbox"/> <b>Network Provisioning Service</b>          | <input checked="" type="checkbox"/> <b>SSDP Discovery Service</b>                             | <input type="checkbox"/>   |
| <input checked="" type="checkbox"/> <b>DCOM Server Process Launcher</b>                | <input checked="" type="checkbox"/> <b>NT LM Security Support Provider</b>       | <input checked="" type="checkbox"/> <b>System Event Notification</b>                          | <input type="checkbox"/>   |
| <input checked="" type="checkbox"/> <b>DHCP Client</b>                                 | <input type="checkbox"/> Peer Name Resolution Protocol                           | <input checked="" type="checkbox"/> <b>System Restore Service</b>                             | <input type="checkbox"/>   |
| <input checked="" type="checkbox"/> <b>Distributed Link Tracking Client</b>            | <input type="checkbox"/> Peer Networking   | <input checked="" type="checkbox"/> <b>Task Scheduler</b>                                     | <input type="checkbox"/>   |
| <input checked="" type="checkbox"/> <b>Distributed Transaction Coordinator</b>         | <input type="checkbox"/> Peer Networking Group Authentication                    | <input checked="" type="checkbox"/> <b>TCP/IP NetBIOS Helper</b>                              | <input type="checkbox"/>   |
| <input checked="" type="checkbox"/> <b>DNS Client</b>                                  | <input type="checkbox"/> Peer Networking Identity Manager                        | <input type="checkbox"/> TCP/IP Print Server  | <input type="checkbox"/>   |
| <input checked="" type="checkbox"/> <b>Error Reporting Service</b>                     | <input checked="" type="checkbox"/> <b>Performance Logs and Alerts</b>           | <input checked="" type="checkbox"/> <b>Telephony</b>  | <input type="checkbox"/>   |
| <input checked="" type="checkbox"/> <b>Event Log</b>                                   | <input checked="" type="checkbox"/> <b>Plug and Play</b>                         | <input checked="" type="checkbox"/> <b>Telnet</b>   | <input type="checkbox"/>   |
| <input checked="" type="checkbox"/> <b>Fast User Switching Compatibility</b>           | <input checked="" type="checkbox"/> <b>Portable Media Serial Number</b>          | <input checked="" type="checkbox"/> <b>Terminal Services</b>                                  | <input type="checkbox"/>   |
| <input type="checkbox"/> Fax   | <input checked="" type="checkbox"/> <b>Print Spooler</b>                         | <input checked="" type="checkbox"/> <b>Themes</b>   | <input type="checkbox"/>   |
| <input type="checkbox"/> FTP Publishing  | <input checked="" type="checkbox"/> <b>Protected Storage</b>                     | <input checked="" type="checkbox"/> <b>Uninterruptible Power Supply</b>                       | <input type="checkbox"/>   |
| <input checked="" type="checkbox"/> <b>Help and Support</b>                            | <input checked="" type="checkbox"/> <b>QoS RSVP</b>                              | <input checked="" type="checkbox"/> <b>Universal Plug and Play Device Host</b>                | <input type="checkbox"/>   |
| <input checked="" type="checkbox"/> <b>HTTP SSL</b>                                    | <input checked="" type="checkbox"/> <b>Remote Access Auto Connection Manager</b> | <input checked="" type="checkbox"/> <b>Volume Shadow Copy</b>                                 | <input type="checkbox"/>   |
| <input checked="" type="checkbox"/> <b>Human Interface Device Access</b>               | <input checked="" type="checkbox"/> <b>Remote Access Connection Manager</b>      | <input checked="" type="checkbox"/> <b>WebClient</b>  | <input type="checkbox"/>   |
| <input type="checkbox"/> IIS Admin   | <input checked="" type="checkbox"/> <b>Remote Desktop Help Session Manager</b>   | <input checked="" type="checkbox"/> <b>Windows Audio</b>                                      | <input type="checkbox"/>   |
| <input checked="" type="checkbox"/> <b>IMAPI CD-Burning COM Service</b>                | <input checked="" type="checkbox"/> <b>Remote Procedure Call (RPC)</b>           | <input checked="" type="checkbox"/> <b>Windows Firewall/Internet Connection Sharing (ICS)</b> | <input type="checkbox"/>   |
| <input checked="" type="checkbox"/> <b>Indexing Service</b>                            | <input checked="" type="checkbox"/> <b>Remote Procedure Call (RPC) Locator</b>   | <input checked="" type="checkbox"/> <b>Windows Image Acquisition (WIA)</b>                    | <input type="checkbox"/>   |
| <input checked="" type="checkbox"/> <b>IPSEC Services</b>                              | <input checked="" type="checkbox"/> <b>Remote Registry</b>                       | <input checked="" type="checkbox"/> <b>Windows Installer</b>                                  | <input type="checkbox"/>   |
| <input type="checkbox"/> IPv6 Helper   | <input checked="" type="checkbox"/> <b>Removable Storage</b>                     | <input checked="" type="checkbox"/> <b>Windows Management Instrumentation (WMI)</b>           | <input type="checkbox"/>   |
| <input checked="" type="checkbox"/> <b>Logical Disk Manager</b>                        | <input type="checkbox"/> RIP Listener  | <input checked="" type="checkbox"/> <b>WMI Driver Extensions</b>                              | <input type="checkbox"/>   |
| <input checked="" type="checkbox"/> <b>Logical Disk Manager Administrative Service</b> | <input checked="" type="checkbox"/> <b>Routing and Remote Access</b>             | <input checked="" type="checkbox"/> <b>Windows Time</b>                                       | <input type="checkbox"/>   |
| <input type="checkbox"/> Message Queuing   | <input checked="" type="checkbox"/> <b>Secondary Logon</b>                       | <input checked="" type="checkbox"/> <b>Wireless Zero Configuration</b>                        | <input type="checkbox"/>   |

## Implementing an Active Directory Network

### Installed Patches and Updates

KB867282  
KB873339  
KB885250  
KB885835  
KB885836  
KB886185  
KB887472  
KB887742  
KB888113  
KB888302  
KB890046  
KB890047  
KB890859  
KB891781  
KB893066  
KB893756  
KB893803V2  
KB894391  
KB896358  
KB896422  
KB896423  
KB896424  
KB896428

KB898461  
KB899587  
KB899589  
KB899591  
KB900485  
KB900725  
KB901017  
KB901190  
KB901214  
KB902400  
KB904706  
KB905414  
KB905749  
KB905915  
KB908519  
KB908531  
KB910437  
KB911562  
KB911567  
KB911927  
KB912812  
KB912919  
KB913446

M886903  
KB911565  
KB911565  
KB911565  
KB911564

# Implementing an Active Directory Network

## Basic Information

Operating System	Windows XP Professional	NetBios Name	Acer6
Computer Name	Acer6	Installation Date	December 30, 2005
Product Version	Serviced Pack 2		
Organization	Ead's Fence		

## Physical Section

Memory	512 MB
Physical Disk (1) Capacity	38.22 GB
Physical Disk (2) Capacity	38.63 GB
Logical Disks Capacity	
Network Interface Card (1)	SiS 900-Based PCI Fast Ethernet Adapter

## Windows Configuration

Product Key	BW2VG-XXDY6-VW3P7-YHQQ6-C7RYM	Time Zone	(GMT-05:00) Eastern time (US & Canada)
Administrative Account	Administrator	Password	*****
Country or Region	United States of America	Area Code	513
Regional Settings	English (United States)	Language Group	Western Europe and United States
Display Colors	Use Windows Default	Display Refresh Frequency	Use Windows Default
Domain/Workgroup Name	EADSFENCE	Display Screen Area	
Protocol(s)	TCP/IP		
Computer TCP/IP Address (1)	192.168.1.16	Subnet	192.168.1.0
DNS Server #1	192.168.1.250		
DHCP Configuration	<input checked="" type="checkbox"/> Yes <input type="checkbox"/> No	Gateway Address	192.168.1.1
Automatic Updates	<input checked="" type="checkbox"/> Enabled: Daily/3:00 A.M. <input type="checkbox"/> Download Only <input type="checkbox"/> Notify Only <input type="checkbox"/> Disabled		

# Implementing an Active Directory Network

## Windows Components (Bold – Default Components; ☒ - Installed)

### ☒ Accessories and Utilities

#### ☒ Accessories

- ☒ Calculator
- ☒ Character Map
- ☒ Clipboard Viewer
- ☒ Desktop Wallpaper
- ☒ Document Templates
- ☒ Mouse Pointers
- ☒ Paint

#### ☒ Games

- ☒ Freecell
- ☒ Hearts
- ☒ Internet Games
- ☒ Minesweeper
- ☒ Solitaire
- ☒ Spider Solitaire

#### ☐ Fax Services

- ☒ Indexing Service
- ☒ Internet Explorer

### ☐ Internet Information Service (IIS)

- ☐ Common Files
- ☐ Documentation
- ☐ File Transfer Protocol (FTP) Service
- ☐ FrontPage 2000 Server Extensions
- ☐ Internet Information Services Snap-In
- ☐ SMTP Service
  - ☐ SMTP Service
- ☐ World Wide Web Service
  - ☐ Printers virtual directory
  - ☐ Remote Desktop Web Connection
  - ☐ Scripts virtual directory
  - ☐ World Wide Web Service
- ☐ Management and Monitoring Tools
  - ☐ Simple Network Management Protocol
  - ☐ WMI SNMP Provider

### ☐ Message Queuing

- ☐ Active Directory Integration
- ☐ Common
  - ☐ Core Functionality
  - ☐ Local Storage
- ☐ MSMQ HTTP Support
- ☐ Triggers
- ☒ MSN Explorer
- ☒ Networking Services
  - ☒ Internet Gateway Device Discovery and Control Client
  - ☐ Peer-to-Peer
  - ☐ RIP Listener
  - ☐ Simple TCP/IP Services
  - ☐ UPnP User Interface
- ☐ Other Network File and Print Services
  - ☐ Print Services for UNIX
- ☒ Outlook Express
- ☒ Update Root Certificates
- ☒ Windows Media Player
- ☒ Windows Messenger

## Installed Applications

- Microsoft - Office Small Business Edition 2003
- Microsoft - Internet Explorer
- Microsoft - Office Access 2003
- Microsoft - Office Excel 2003
- Microsoft - Office Word 2003
- Microsoft - Office Publisher 2003
- Microsoft - Office PowerPoint 2003
- Windows Defender
- Network Associates VirusScan Enterprise Version 8.0.0
- NTI CD&DVD Maker 7
- Adobe Acrobat Version 7
- Cyberlink PowerDVD



# Implementing an Active Directory Network

## Installed Patches and Updates

KB867282  
KB873339  
KB885250  
KB885835  
KB885836  
KB886185  
KB887472  
KB887742  
KB888113  
KB888302  
KB890046  
KB890047  
KB890859  
KB891781  
KB893066  
KB893756  
KB893803V2  
KB894391  
KB896358  
KB896422  
KB896423  
KB896424  
KB896428

KB898461  
KB899587  
KB899589  
KB899591  
KB900485  
KB900725  
KB901017  
KB901190  
KB901214  
KB902400  
KB904706  
KB905414  
KB905749  
KB905915  
KB908519  
KB908531  
KB910437  
KB911562  
KB911567  
KB911927  
KB912812  
KB912919  
KB913446

M886903  
KB911565  
KB911565  
KB911565  
KB911564

# Implementing an Active Directory Network

## Basic Information

Operating System	Windows XP Professional	NetBios Name	Acer8
Computer Name	Acer8	Installation Date	December 30, 2005
Product Version	Serviced Pack 2		
Organization	Ead's Fence		

## Physical Section

Memory	512 MB
Physical Disk (1) Capacity	38.22 GB
Physical Disk (2) Capacity	38.63 GB
Logical Disks Capacity	
Network Interface Card (1)	SiS 900-Based PCI Fast Ethernet Adapter

## Windows Configuration

Product Key	BW2VG-XXDY6-VW3P7-YHQQ6-C7RYM	Time Zone	(GMT-05:00) Eastern time (US & Canada)	
Administrative Account	Administrator	Password	*****	
Country or Region	United States of America	Area Code	513	
Regional Settings	English (United States)	Language Group	Western Europe and United States	
Display Colors	Use Windows Default	Display Screen Area	Use Windows Default	
Domain/Workgroup Name	EADSFENCE	Use Windows Default	Display Refresh Frequency	Use Windows Default
Protocol(s)	TCP/IP			
Computer TCP/IP Address (1)	192.168.1.14	Subnet	192.168.1.0	
DNS Server #1	192.168.1.250			
DHCP Configuration	<input checked="" type="checkbox"/> Yes <input type="checkbox"/> No	Gateway Address	192.168.1.1	
Automatic Updates	<input checked="" type="checkbox"/> Enabled: Daily/3:00 A.M. <input type="checkbox"/> Download Only <input type="checkbox"/> Notify Only <input type="checkbox"/> Disabled			

# Implementing an Active Directory Network

## Windows Components (Bold – Default Components; - Installed)

- Accessories and Utilities**
- Accessories**
- Calculator**
- Character Map**
- Clipboard Viewer**
- Desktop Wallpaper**
- Document Templates**
- Mouse Pointers**
- Paint**
- Games**
- Freecell**
- Hearts**
- Internet Games**
- Minesweeper**
- Solitaire**
- Spider Solitaire**
- Fax Services
- Indexing Service**
- Internet Explorer**

- Internet Information Service (IIS)
- Common Files
- Documentation
- File Transfer Protocol (FTP) Service
- FrontPage 2000 Server Extensions
- Internet Information Services Snap-In
- SMTP Service
- SMTP Service
- World Wide Web Service
- Printers virtual directory
- Remote Desktop Web Connection
- Scripts virtual directory
- World Wide Web Service
- Management and Monitoring Tools
- Simple Network Management Protocol
- WMI SNMP Provider

- Message Queuing
- Active Directory Integri
- Common
- Core Functionality
- Local Storage
- MSMQ HTTP Support
- Triggers
- MSN Explorer**
- Networking Services**
- Internet Gateway De**iscovery and Control Client
- Peer-to-Peer
- RIP Listener
- Simple TCP/IP Service
- UPnP User Interface
- Other Network File and Services
- Print Services for UNI
- Outlook Express**
- Update Root Certificate**
- Windows Media Player**
- Windows Messenger**

## Installed Applications

Microsoft - Office Small Business Edition 2003

Microsoft - Internet Explorer

Microsoft - Office Access 2003

Microsoft - Office Excel 2003

Microsoft - Office Word 2003

Microsoft - Office Publisher 2003

Microsoft - Office PowerPoint 2003

Windows Defender

Network Associates VirusScan Enterprise Version

8.0.0

NTI CD&DVD Maker 7

Adobe Acrobat Version 7

Cyberlink PowerDVD

# Implementing an Active Directory Network

## Windows Services (Bold – Default Services; - Installed)

- |  |  |   |  |
|--|--|---|--|
| <input checked="" type="checkbox"/> <b>Alerter</b>                                     | <input type="checkbox"/> Message Queuing Triggers                                | <input checked="" type="checkbox"/> <b>Security Accounts Manager</b>                          | <input checked="" type="checkbox"/> <b>WMI Performance Adapter</b> |
| <input checked="" type="checkbox"/> <b>Application Layer Gateway Service</b>           | <input checked="" type="checkbox"/> <b>Messenger</b>                             | <input checked="" type="checkbox"/> <b>Security Center</b>                                    | <input checked="" type="checkbox"/> <b>Workstation</b>             |
| <input checked="" type="checkbox"/> <b>Application Management</b>                      | <input checked="" type="checkbox"/> <b>MS Software Shadow Copy Provider</b>      | <input checked="" type="checkbox"/> <b>Server</b>   | <input type="checkbox"/> World Wide Web Publishing                 |
| <input checked="" type="checkbox"/> <b>Automatic Updates</b>                           | <input checked="" type="checkbox"/> <b>Net Logon</b>                             | <input checked="" type="checkbox"/> <b>Shell Hardware Detection</b>                           | <b>OTHER:</b>  |
| <input checked="" type="checkbox"/> <b>Background Intelligent Transfer Service</b>     | <input checked="" type="checkbox"/> <b>NetMeeting Remote Desktop Sharing</b>     | <input type="checkbox"/> Simple Mail Transport Protocol (SMTP)                                | <input type="checkbox"/>   |
| <input checked="" type="checkbox"/> <b>Clipboard</b>                                   | <input checked="" type="checkbox"/> <b>Network Connections</b>                   | <input type="checkbox"/> Simple TCP/IP Services   | <input type="checkbox"/>   |
| <input checked="" type="checkbox"/> <b>COM+ Event System</b>                           | <input checked="" type="checkbox"/> <b>Network DDE</b>                           | <input checked="" type="checkbox"/> <b>Smart Card</b>   | <input type="checkbox"/>   |
| <input checked="" type="checkbox"/> <b>COM+ System Application</b>                     | <input checked="" type="checkbox"/> <b>Network DDE DSDM</b>                      | <input type="checkbox"/> SNMP Service   | <input type="checkbox"/>   |
| <input checked="" type="checkbox"/> <b>Computer Browser</b>                            | <input checked="" type="checkbox"/> <b>Network Location Awareness (NLA)</b>      | <input type="checkbox"/> SNMP Trap Service  | <input type="checkbox"/>   |
| <input checked="" type="checkbox"/> <b>Cryptographic Services</b>                      | <input checked="" type="checkbox"/> <b>Network Provisioning Service</b>          | <input checked="" type="checkbox"/> <b>SSDP Discovery Service</b>                             | <input type="checkbox"/>   |
| <input checked="" type="checkbox"/> <b>DCOM Server Process Launcher</b>                | <input checked="" type="checkbox"/> <b>NT LM Security Support Provider</b>       | <input checked="" type="checkbox"/> <b>System Event Notification</b>                          | <input type="checkbox"/>   |
| <input checked="" type="checkbox"/> <b>DHCP Client</b>                                 | <input type="checkbox"/> Peer Name Resolution Protocol                           | <input checked="" type="checkbox"/> <b>System Restore Service</b>                             | <input type="checkbox"/>   |
| <input checked="" type="checkbox"/> <b>Distributed Link Tracking Client</b>            | <input type="checkbox"/> Peer Networking   | <input checked="" type="checkbox"/> <b>Task Scheduler</b>                                     | <input type="checkbox"/>   |
| <input checked="" type="checkbox"/> <b>Distributed Transaction Coordinator</b>         | <input type="checkbox"/> Peer Networking Group Authentication                    | <input checked="" type="checkbox"/> <b>TCP/IP NetBIOS Helper</b>                              | <input type="checkbox"/>   |
| <input checked="" type="checkbox"/> <b>DNS Client</b>                                  | <input type="checkbox"/> Peer Networking Identity Manager                        | <input type="checkbox"/> TCP/IP Print Server  | <input type="checkbox"/>   |
| <input checked="" type="checkbox"/> <b>Error Reporting Service</b>                     | <input checked="" type="checkbox"/> <b>Performance Logs and Alerts</b>           | <input checked="" type="checkbox"/> <b>Telephony</b>  | <input type="checkbox"/>   |
| <input checked="" type="checkbox"/> <b>Event Log</b>                                   | <input checked="" type="checkbox"/> <b>Plug and Play</b>                         | <input checked="" type="checkbox"/> <b>Telnet</b>   | <input type="checkbox"/>   |
| <input checked="" type="checkbox"/> <b>Fast User Switching Compatibility</b>           | <input checked="" type="checkbox"/> <b>Portable Media Serial Number</b>          | <input checked="" type="checkbox"/> <b>Terminal Services</b>                                  | <input type="checkbox"/>   |
| <input type="checkbox"/> Fax   | <input checked="" type="checkbox"/> <b>Print Spooler</b>                         | <input checked="" type="checkbox"/> <b>Themes</b>   | <input type="checkbox"/>   |
| <input type="checkbox"/> FTP Publishing  | <input checked="" type="checkbox"/> <b>Protected Storage</b>                     | <input checked="" type="checkbox"/> <b>Uninterruptible Power Supply</b>                       | <input type="checkbox"/>   |
| <input checked="" type="checkbox"/> <b>Help and Support</b>                            | <input checked="" type="checkbox"/> <b>QoS RSVP</b>                              | <input checked="" type="checkbox"/> <b>Universal Plug and Play Device Host</b>                | <input type="checkbox"/>   |
| <input checked="" type="checkbox"/> <b>HTTP SSL</b>                                    | <input checked="" type="checkbox"/> <b>Remote Access Auto Connection Manager</b> | <input checked="" type="checkbox"/> <b>Volume Shadow Copy</b>                                 | <input type="checkbox"/>   |
| <input checked="" type="checkbox"/> <b>Human Interface Device Access</b>               | <input checked="" type="checkbox"/> <b>Remote Access Connection Manager</b>      | <input checked="" type="checkbox"/> <b>WebClient</b>  | <input type="checkbox"/>   |
| <input type="checkbox"/> IIS Admin   | <input checked="" type="checkbox"/> <b>Remote Desktop Help Session Manager</b>   | <input checked="" type="checkbox"/> <b>Windows Audio</b>                                      | <input type="checkbox"/>   |
| <input checked="" type="checkbox"/> <b>IMAPI CD-Burning COM Service</b>                | <input checked="" type="checkbox"/> <b>Remote Procedure Call (RPC)</b>           | <input checked="" type="checkbox"/> <b>Windows Firewall/Internet Connection Sharing (ICS)</b> | <input type="checkbox"/>   |
| <input checked="" type="checkbox"/> <b>Indexing Service</b>                            | <input checked="" type="checkbox"/> <b>Remote Procedure Call (RPC) Locator</b>   | <input checked="" type="checkbox"/> <b>Windows Image Acquisition (WIA)</b>                    | <input type="checkbox"/>   |
| <input checked="" type="checkbox"/> <b>IPSEC Services</b>                              | <input checked="" type="checkbox"/> <b>Remote Registry</b>                       | <input checked="" type="checkbox"/> <b>Windows Installer</b>                                  | <input type="checkbox"/>   |
| <input type="checkbox"/> IPv6 Helper   | <input checked="" type="checkbox"/> <b>Removable Storage</b>                     | <input checked="" type="checkbox"/> <b>Windows Management Instrumentation (WMI)</b>           | <input type="checkbox"/>   |
| <input checked="" type="checkbox"/> <b>Logical Disk Manager</b>                        | <input type="checkbox"/> RIP Listener  | <input checked="" type="checkbox"/> <b>WMI Driver Extensions</b>                              | <input type="checkbox"/>   |
| <input checked="" type="checkbox"/> <b>Logical Disk Manager Administrative Service</b> | <input checked="" type="checkbox"/> <b>Routing and Remote Access</b>             | <input checked="" type="checkbox"/> <b>Windows Time</b>                                       | <input type="checkbox"/>   |
| <input type="checkbox"/> Message Queuing   | <input checked="" type="checkbox"/> <b>Secondary Logon</b>                       | <input checked="" type="checkbox"/> <b>Wireless Zero Configuration</b>                        | <input type="checkbox"/>   |

## Implementing an Active Directory Network

### Installed Patches and Updates

KB867282	KB898461	M886903
KB873339	KB899587	KB911565
KB885250	KB899589	KB911565
KB885835	KB899591	KB911565
KB885836	KB900485	KB911564
KB886185	KB900725	
KB887472	KB901017	
KB887742	KB901190	
KB888113	KB901214	
KB888302	KB902400	
KB890046	KB904706	
KB890047	KB905414	
KB890859	KB905749	
KB891781	KB905915	
KB893066	KB908519	
KB893756	KB908531	
KB893803V2	KB910437	
KB894391	KB911562	
KB896358	KB911567	
KB896422	KB911927	
KB896423	KB912812	
KB896424	KB912919	
KB896428	KB913446	

Date: May 6, 2006

# Implementing an Active Directory Network

## Basic Information

Operating System	Windows XP Professional	NetBios Name	Acer9
Computer Name	Acer9	Installation Date	December 30, 2005
Product Version	Serviced Pack 2		
Organization	Ead's Fence		

## Physical Section

Memory	512 MB
Physical Disk (1) Capacity	38.22 GB
Physical Disk (2) Capacity	38.63 GB
Logical Disks Capacity	
Network Interface Card (1)	SiS 900-Based PCI Fast Ethernet Adapter

## Windows Configuration

Product Key	BW2VG-XXDY6-VW3P7-YHQQ6-C7RYM		Time Zone	(GMT-05:00) Eastern time (US & Canada)	
Administrative Account	Administrator		Password	*****	
Country or Region	United States of America		Area Code	513	
Regional Settings	English (United States)		Language Group	Western Europe and United States	
Display Colors	Use Windows Default	Display Screen Area	Use Windows Default	Display Refresh Frequency	Use Windows Default
Domain/Workgroup Name	EADSFENCE				
Protocol(s)	TCP/IP				
Computer TCP/IP Address (1)	192.168.1.16	Subnet	192.168.1.0		
DNS Server #1	192.168.1.250				
DHCP Configuration	<input checked="" type="checkbox"/> Yes	<input type="checkbox"/> No	Gateway Address	192.168.1.1	
Automatic Updates	<input checked="" type="checkbox"/> Enabled: Daily/3:00 A.M. <input type="checkbox"/> Download Only <input type="checkbox"/> Notify Only <input type="checkbox"/> Disabled				

# Implementing an Active Directory Network

## Windows Components (Bold – Default Components; ☒ - Installed)

- Accessories and Utilities
  - Accessories
    - Calculator
    - Character Map
    - Clipboard Viewer
    - Desktop Wallpaper
    - Document Templates
    - Mouse Pointers
    - Paint
  - Games
    - Freecell
    - Hearts
    - Internet Games
    - Minesweeper
    - Solitaire
    - Spider Solitaire
  - Fax Services
  - Indexing Service
  - Internet Explorer

- Internet Information Service (IIS)
  - Common Files
  - Documentation
  - File Transfer Protocol (FTP) Service
  - FrontPage 2000 Server Extensions
  - Internet Information Services Snap-In
  - SMTP Service
    - SMTP Service
  - World Wide Web Service
    - Printers virtual directory
    - Remote Desktop Web Connection
    - Scripts virtual directory
    - World Wide Web Service
- Management and Monitoring Tools
  - Simple Network Management Protocol
  - WMI SNMP Provider

- Message Queuing
  - Active Directory Integration
  - Common
    - Core Functionality
    - Local Storage
  - MSMQ HTTP Support
  - Triggers
- MSN Explorer
- Networking Services
  - Internet Gateway Device Discovery and Control Client
  - Peer-to-Peer
  - RIP Listener
  - Simple TCP/IP Services
  - UPnP User Interface
- Other Network File and Print Services
  - Print Services for UNIX
- Outlook Express
- Update Root Certificates
- Windows Media Player
- Windows Messenger

## Installed Applications

Microsoft - Office Small Business Edition 2003

Microsoft - Internet Explorer

Microsoft - Office Access 2003

Microsoft - Office Excel 2003

Microsoft - Office Word 2003

Microsoft - Office Publisher 2003

Microsoft - Office PowerPoint 2003

Windows Defender

Network Associates VirusScan Enterprise Version

8.0.0

NTI CD&DVD Maker 7

Adobe Acrobat Version 7

Cyberlink PowerDVD

**Windows Services (Bold – Default Services;  - Installed)**

- |  |  |   |  |
|--|--|---|--|
| <input checked="" type="checkbox"/> <b>Alerter</b>                                     | <input type="checkbox"/> Message Queuing Triggers                                | <input checked="" type="checkbox"/> <b>Security Accounts Manager</b>                          | <input checked="" type="checkbox"/> <b>WMI Performance Ada</b> |
| <input checked="" type="checkbox"/> <b>Application Layer Gateway Service</b>           | <input checked="" type="checkbox"/> <b>Messenger</b>                             | <input checked="" type="checkbox"/> <b>Security Center</b>                                    | <input checked="" type="checkbox"/> <b>Workstation</b>         |
| <input checked="" type="checkbox"/> <b>Application Management</b>                      | <input checked="" type="checkbox"/> <b>MS Software Shadow Copy Provider</b>      | <input checked="" type="checkbox"/> <b>Server</b>   | <input type="checkbox"/> World Wide Web Publis                 |
| <input checked="" type="checkbox"/> <b>Automatic Updates</b>                           | <input checked="" type="checkbox"/> <b>Net Logon</b>                             | <input checked="" type="checkbox"/> <b>Shell Hardware Detection</b>                           | <b>OTHER:</b>  |
| <input checked="" type="checkbox"/> <b>Background Intelligent Transfer Service</b>     | <input checked="" type="checkbox"/> <b>NetMeeting Remote Desktop Sharing</b>     | <input type="checkbox"/> Simple Mail Transport Protocol (SMTP)                                | <input type="checkbox"/>                                       |
| <input checked="" type="checkbox"/> <b>Clipbook</b>                                    | <input checked="" type="checkbox"/> <b>Network Connections</b>                   | <input type="checkbox"/> Simple TCP/IP Services   | <input type="checkbox"/>                                       |
| <input checked="" type="checkbox"/> <b>COM+ Event System</b>                           | <input checked="" type="checkbox"/> <b>Network DDE</b>                           | <input checked="" type="checkbox"/> <b>Smart Card</b>   | <input type="checkbox"/>                                       |
| <input checked="" type="checkbox"/> <b>COM+ System Application</b>                     | <input checked="" type="checkbox"/> <b>Network DDE DSDM</b>                      | <input type="checkbox"/> SNMP Service   | <input type="checkbox"/>                                       |
| <input checked="" type="checkbox"/> <b>Computer Browser</b>                            | <input checked="" type="checkbox"/> <b>Network Location Awareness (NLA)</b>      | <input type="checkbox"/> SNMP Trap Service  | <input type="checkbox"/>                                       |
| <input checked="" type="checkbox"/> <b>Cryptographic Services</b>                      | <input checked="" type="checkbox"/> <b>Network Provisioning Service</b>          | <input checked="" type="checkbox"/> <b>SSDP Discovery Service</b>                             | <input type="checkbox"/>                                       |
| <input checked="" type="checkbox"/> <b>DCOM Server Process Launcher</b>                | <input checked="" type="checkbox"/> <b>NT LM Security Support Provider</b>       | <input checked="" type="checkbox"/> <b>System Event Notification</b>                          | <input type="checkbox"/>                                       |
| <input checked="" type="checkbox"/> <b>DHCP Client</b>                                 | <input type="checkbox"/> Peer Name Resolution Protocol                           | <input checked="" type="checkbox"/> <b>System Restore Service</b>                             | <input type="checkbox"/>                                       |
| <input checked="" type="checkbox"/> <b>Distributed Link Tracking Client</b>            | <input type="checkbox"/> Peer Networking   | <input checked="" type="checkbox"/> <b>Task Scheduler</b>                                     | <input type="checkbox"/>                                       |
| <input checked="" type="checkbox"/> <b>Distributed Transaction Coordinator</b>         | <input type="checkbox"/> Peer Networking Group Authentication                    | <input checked="" type="checkbox"/> <b>TCP/IP NetBIOS Helper</b>                              | <input type="checkbox"/>                                       |
| <input checked="" type="checkbox"/> <b>DNS Client</b>                                  | <input type="checkbox"/> Peer Networking Identity Manager                        | <input type="checkbox"/> TCP/IP Print Server  | <input type="checkbox"/>                                       |
| <input checked="" type="checkbox"/> <b>Error Reporting Service</b>                     | <input checked="" type="checkbox"/> <b>Performance Logs and Alerts</b>           | <input checked="" type="checkbox"/> <b>Telephony</b>  | <input type="checkbox"/>                                       |
| <input checked="" type="checkbox"/> <b>Event Log</b>                                   | <input checked="" type="checkbox"/> <b>Plug and Play</b>                         | <input checked="" type="checkbox"/> <b>Telnet</b>   | <input type="checkbox"/>                                       |
| <input checked="" type="checkbox"/> <b>Fast User Switching Compatibility</b>           | <input checked="" type="checkbox"/> <b>Portable Media Serial Number</b>          | <input checked="" type="checkbox"/> <b>Terminal Services</b>                                  | <input type="checkbox"/>                                       |
| <input type="checkbox"/> <b>Fax</b>  | <input checked="" type="checkbox"/> <b>Print Spooler</b>                         | <input checked="" type="checkbox"/> <b>Themes</b>   | <input type="checkbox"/>                                       |
| <input type="checkbox"/> <b>FTP Publishing</b>   | <input checked="" type="checkbox"/> <b>Protected Storage</b>                     | <input checked="" type="checkbox"/> <b>Uninterruptible Power Supply</b>                       | <input type="checkbox"/>                                       |
| <input checked="" type="checkbox"/> <b>Help and Support</b>                            | <input checked="" type="checkbox"/> <b>QoS RSVP</b>                              | <input checked="" type="checkbox"/> <b>Universal Plug and Play Device Host</b>                | <input type="checkbox"/>                                       |
| <input checked="" type="checkbox"/> <b>HTTP SSL</b>                                    | <input checked="" type="checkbox"/> <b>Remote Access Auto Connection Manager</b> | <input checked="" type="checkbox"/> <b>Volume Shadow Copy</b>                                 | <input type="checkbox"/>                                       |
| <input checked="" type="checkbox"/> <b>Human Interface Device Access</b>               | <input checked="" type="checkbox"/> <b>Remote Access Connection Manager</b>      | <input checked="" type="checkbox"/> <b>WebClient</b>  | <input type="checkbox"/>                                       |
| <input type="checkbox"/> <b>IIS Admin</b>  | <input checked="" type="checkbox"/> <b>Remote Desktop Help Session Manager</b>   | <input checked="" type="checkbox"/> <b>Windows Audio</b>                                      | <input type="checkbox"/>                                       |
| <input checked="" type="checkbox"/> <b>IMAPI CD-Burning COM Service</b>                | <input checked="" type="checkbox"/> <b>Remote Procedure Call (RPC)</b>           | <input checked="" type="checkbox"/> <b>Windows Firewall/Internet Connection Sharing (ICS)</b> | <input type="checkbox"/>                                       |
| <input checked="" type="checkbox"/> <b>Indexing Service</b>                            | <input checked="" type="checkbox"/> <b>Remote Procedure Call (RPC) Locator</b>   | <input checked="" type="checkbox"/> <b>Windows Image Acquisition (WIA)</b>                    | <input type="checkbox"/>                                       |
| <input checked="" type="checkbox"/> <b>IPSEC Services</b>                              | <input checked="" type="checkbox"/> <b>Remote Registry</b>                       | <input checked="" type="checkbox"/> <b>Windows Installer</b>                                  | <input type="checkbox"/>                                       |
| <input type="checkbox"/> <b>IPv6 Helper</b>  | <input checked="" type="checkbox"/> <b>Removable Storage</b>                     | <input checked="" type="checkbox"/> <b>Windows Management Instrumentation (WMI)</b>           | <input type="checkbox"/>                                       |
| <input checked="" type="checkbox"/> <b>Logical Disk Manager</b>                        | <input type="checkbox"/> RIP Listener  | <input checked="" type="checkbox"/> <b>WMI Driver Extensions</b>                              | <input type="checkbox"/>                                       |
| <input checked="" type="checkbox"/> <b>Logical Disk Manager Administrative Service</b> | <input checked="" type="checkbox"/> <b>Routing and Remote Access</b>             | <input checked="" type="checkbox"/> <b>Windows Time</b>                                       | <input type="checkbox"/>                                       |
| <input type="checkbox"/> <b>Message Queuing</b>  | <input checked="" type="checkbox"/> <b>Secondary Logon</b>                       | <input checked="" type="checkbox"/> <b>Wireless Zero Configuration</b>                        | <input type="checkbox"/>                                       |

**Installed Patches and Updates**

KB867282  
KB873339  
KB885250  
KB885835  
KB885836  
KB886185  
KB887472  
KB887742  
KB888113  
KB888302  
KB890046  
KB890047  
KB890859  
KB891781  
KB893066  
KB893756  
KB893803V2  
KB894391  
KB896358  
KB896422  
KB896423  
KB896424  
KB896428

KB898461  
KB899587  
KB899589  
KB899591  
KB900485  
KB900725  
KB901017  
KB901190  
KB901214  
KB902400  
KB904706  
KB905414  
KB905749  
KB905915  
KB908519  
KB908531  
KB910437  
KB911562  
KB911567  
KB911927  
KB912812  
KB912919  
KB913446

M886903  
KB911565  
KB911565  
KB911565  
KB911564

**Date:** May 6, 2006

# Implementing an Active Directory Network

## Basic Information

Operating System	Windows XP Professional	NetBios Name	Acer10
Computer Name	Acer10	Installation Date	December 30, 2005
Product Version	Serviced Pack 2		
Organization	Ead's Fence		

## Physical Section

Memory	512 MB
Physical Disk (1) Capacity	38.22 GB
Physical Disk (2) Capacity	38.63 GB
Logical Disks Capacity	
Network Interface Card (1)	SiS 900-Based PCI Fast Ethernet Adapter

## Windows Configuration

Product Key	BW2VG-XXDY6-VW3P7-YHQQ6-C7RYM	Time Zone	(GMT-05:00) Eastern time (US & Canada)
Administrative Account	Administrator	Password	*****
Country or Region	United States of America	Area Code	513
Regional Settings	English (United States)	Language Group	Western Europe and United States
Display Colors	Use Windows Default	Display Screen Area	Use Windows Default
Domain/Workgroup Name	EADSFENCE	Display Refresh Frequency	Use Windows Def:
Protocol(s)	TCP/IP		
Computer TCP/IP Address (1)	192.168.1.22	Subnet	192.168.1.0
DNS Server #1	192.168.1.250		
DHCP Configuration	<input checked="" type="checkbox"/> Yes <input type="checkbox"/> No	Gateway Address	192.168.1.1
Automatic Updates	<input checked="" type="checkbox"/> Enabled: Daily/3:00 A.M. <input type="checkbox"/> Download Only <input type="checkbox"/> Notify Only <input type="checkbox"/> Disabled		

## Implementing an Active Directory Network

### Windows Components (Bold – Default Components; ☒ - Installed)

- ☒ **Accessories and Utilities**
  - ☒ **Accessories**
    - ☒ Calculator
    - ☒ Character Map
    - ☒ Clipboard Viewer
    - ☒ Desktop Wallpaper
    - ☒ Document Templates
    - ☒ Mouse Pointers
    - ☒ Paint
  - ☒ **Games**
    - ☒ Freecell
    - ☒ Hearts
    - ☒ Internet Games
    - ☒ Minesweeper
    - ☒ Solitaire
    - ☒ Spider Solitaire
  - Fax Services
  - ☒ Indexing Service
  - ☒ Internet Explorer

- Internet Information Service (IIS)
  - Common Files
  - Documentation
  - File Transfer Protocol (FTP) Service
  - FrontPage 2000 Server Extensions
  - Internet Information Services Snap-In
  - SMTP Service
    - SMTP Service
  - World Wide Web Service
    - Printers virtual directory
    - Remote Desktop Web Connection
    - Scripts virtual directory
    - World Wide Web Service
- Management and Monitoring Tools
  - Simple Network Management Protocol
  - WMI SNMP Provider

- Message Queuing
  - Active Directory Integration
  - Common
    - Core Functionality
    - Local Storage
  - MSMQ HTTP Support
  - Triggers
- ☒ **MSN Explorer**
- ☒ **Networking Services**
  - ☒ **Internet Gateway Device Discovery and Control Client**
  - Peer-to-Peer
  - RIP Listener
  - Simple TCP/IP Services
  - UPnP User Interface
  - Other Network File and Print Services
  - Print Services for UNIX
- ☒ **Outlook Express**
- ☒ **Update Root Certificates**
- ☒ **Windows Media Player**
- ☒ **Windows Messenger**

### Installed Applications

Microsoft - Office Small Business Edition 2003

Microsoft - Internet Explorer

Microsoft - Office Access 2003

Microsoft - Office Excel 2003

Microsoft - Office Word 2003

Microsoft - Office Publisher 2003

Microsoft - Office PowerPoint 2003

Windows Defender

Network Associates VirusScan Enterprise Version

8.0.0

NTI CD&DVD Maker 7

Adobe Acrobat Version 7

Cyberlink PowerDVD



# Implementing an Active Directory Network

## Installed Patches and Updates

KB867282  
KB873339  
KB885250  
KB885835  
KB885836  
KB886185  
KB887472  
KB887742  
KB888113  
KB888302  
KB890046  
KB890047  
KB890859  
KB891781  
KB893066  
KB893756  
KB893803V2  
KB894391  
KB896358  
KB896422  
KB896423  
KB896424  
KB896428

KB898461  
KB899587  
KB899589  
KB899591  
KB900485  
KB900725  
KB901017  
KB901190  
KB901214  
KB902400  
KB904706  
KB905414  
KB905749  
KB905915  
KB908519  
KB908531  
KB910437  
KB911562  
KB911567  
KB911927  
KB912812  
KB912919  
KB913446

M886903  
KB911565  
KB911565  
KB911565  
KB911564

# Implementing an Active Directory Network

## Basic Information

Operating System	Windows XP Professional	NetBios Name	Acer13
Computer Name	Acer13	Installation Date	December 30, 2005
Product Version	Serviced Pack 2		
Organization	Ead's Fence		

## Physical Section

Memory	512 MB
Physical Disk (1) Capacity	38.22 GB
Physical Disk (2) Capacity	38.63 GB
Logical Disks Capacity	
Network Interface Card (1)	SiS 900-Based PCI Fast Ethernet Adapter

## Windows Configuration

Product Key	BW2VG-XXDY6-VW3P7-YHQQ6-C7RYM		Time Zone	(GMT-05:00) Eastern time (US & Canada)	
Administrative Account	Administrator		Password	*****	
Country or Region	United States of America		Area Code	513	
Regional Settings	English (United States)		Language Group	Western Europe and United States	
Display Colors	Use Windows Default		Use Windows Default	Display Refresh Frequency	Use Windows Default
Domain/Workgroup Name	EADSFENCE		Display Screen Area		
Protocol(s)	TCP/IP				
Computer TCP/IP Address (1)	192.168.1.12	Subnet	192.168.1.0		
DNS Server #1	192.168.1.250				
DHCP Configuration	<input checked="" type="checkbox"/> Yes <input type="checkbox"/> No		Gateway Address	192.168.1.1	
Automatic Updates	<input checked="" type="checkbox"/> Enabled: Daily/3:00 A.M. <input type="checkbox"/> Download Only <input type="checkbox"/> Notify Only <input type="checkbox"/> Disabled				

# Implementing an Active Directory Network

## Windows Components (Bold – Default Components; ☒ - Installed)

- ☒ Accessories and Utilities
  - ☒ Accessories
    - ☒ Calculator
    - ☒ Character Map
    - ☒ Clipboard Viewer
    - ☒ Desktop Wallpaper
    - ☒ Document Templates
    - ☒ Mouse Pointers
    - ☒ Paint
  - ☒ Games
    - ☒ Freecell
    - ☒ Hearts
    - ☒ Internet Games
    - ☒ Minesweeper
    - ☒ Solitaire
    - ☒ Spider Solitaire
  - Fax Services
  - ☒ Indexing Service
  - ☒ Internet Explorer

- Internet Information Service (IIS)
  - Common Files
  - Documentation
  - File Transfer Protocol (FTP) Service
  - FrontPage 2000 Server Extensions
  - Internet Information Services Snap-In
  - SMTP Service
    - SMTP Service
  - World Wide Web Service
    - Printers virtual directory
    - Remote Desktop Web Connection
    - Scripts virtual directory
    - World Wide Web Service
- Management and Monitoring Tools
  - Simple Network Management Protocol
  - WMI SNMP Provider

- Message Queuing
  - Active Directory Integration
  - Common
    - Core Functionality
    - Local Storage
  - MSMQ HTTP Support
  - Triggers
- ☒ MSN Explorer
- ☒ Networking Services
  - ☒ Internet Gateway Device Discovery and Control Client
  - Peer-to-Peer
  - RIP Listener
  - Simple TCP/IP Services
  - UPnP User Interface
- Other Network File and Print Services
  - Print Services for UNIX
- ☒ Outlook Express
- ☒ Update Root Certificates
- ☒ Windows Media Player
- ☒ Windows Messenger

## Installed Applications

- Microsoft - Office Small Business Edition 2003
- Microsoft - Internet Explorer
- Microsoft - Office Access 2003
- Microsoft - Office Excel 2003
- Microsoft - Office Word 2003
- Microsoft - Office Publisher 2003
- Microsoft - Office PowerPoint 2003
- Windows Defender
- Network Associates VirusScan Enterprise Version 8.0.0
- NTI CD&DVD Maker 7
- Adobe Acrobat Version 7
- Cyberlink PowerDVD



## Implementing an Active Directory Network

### Installed Patches and Updates

KB867282  
KB873339  
KB885250  
KB885835  
KB885836  
KB886185  
KB887472  
KB887742  
KB888113  
KB888302  
KB890046  
KB890047  
KB890859  
KB891781  
KB893066  
KB893756  
KB893803V2  
KB894391  
KB896358  
KB896422  
KB896423  
KB896424  
KB896428

KB898461  
KB899587  
KB899589  
KB899591  
KB900485  
KB900725  
KB901017  
KB901190  
KB901214  
KB902400  
KB904706  
KB905414  
KB905749  
KB905915  
KB908519  
KB908531  
KB910437  
KB911562  
KB911567  
KB911927  
KB912812  
KB912919  
KB913446

M886903  
KB911565  
KB911565  
KB911565  
KB911564

# Implementing an Active Directory Network

## Basic Information

Operating System	Windows XP Professional	NetBios Name	Acer15
Computer Name	Acer15	Installation Date	December 30, 2005
Product Version	Serviced Pack 2		
Organization	Ead's Fence		

## Physical Section

Memory	512 MB
Physical Disk (1) Capacity	38.22 GB
Physical Disk (2) Capacity	38.63 GB
Logical Disks Capacity	
Network Interface Card (1)	SiS 900-Based PCI Fast Ethernet Adapter

## Windows Configuration

Product Key	BW2VG-XXDY6-VW3P7-YHQQ6-C7RYM	Time Zone	(GMT-05:00) Eastern time (US & Canada)	
Administrative Account	Administrator	Password	*****	
Country or Region	United States of America	Area Code	513	
Regional Settings	English (United States)	Language Group	Western Europe and United States	
Display Colors	Use Windows Default	Display Screen Area	Use Windows Default	
Domain/Workgroup Name	EADSFENCE	Use Windows Default	Display Refresh Frequency	Use Windows Default
Protocol(s)	TCP/IP			
Computer TCP/IP Address (1)	192.168.1.23	Subnet	192.168.1.0	
DNS Server #1	192.168.1.250			
DHCP Configuration	<input checked="" type="checkbox"/> Yes <input type="checkbox"/> No	Gateway Address	192.168.1.1	
Automatic Updates	<input checked="" type="checkbox"/> Enabled: Daily/3:00 A.M. <input type="checkbox"/> Download Only <input type="checkbox"/> Notify Only <input type="checkbox"/> Disabled			

# Implementing an Active Directory Network

## Windows Components (Bold – Default Components; - Installed)

- Accessories and Utilities
  - Accessories
    - Calculator
    - Character Map
    - Clipboard Viewer
    - Desktop Wallpaper
    - Document Templates
    - Mouse Pointers
    - Paint
  - Games
    - Freecell
    - Hearts
    - Internet Games
    - Minesweeper
    - Solitaire
    - Spider Solitaire
  - Fax Services
  - Indexing Service
  - Internet Explorer

- Internet Information Service (IIS)
  - Common Files
  - Documentation
  - File Transfer Protocol (FTP) Service
  - FrontPage 2000 Server Extensions
  - Internet Information Services Snap-In
  - SMTP Service
    - SMTP Service
  - World Wide Web Service
    - Printers virtual directory
    - Remote Desktop Web Connection
    - Scripts virtual directory
    - World Wide Web Service
- Management and Monitoring Tools
  - Simple Network Management Protocol
  - WMI SNMP Provider

- Message Queuing
  - Active Directory Integration
  - Common
    - Core Functionality
    - Local Storage
  - MSMQ HTTP Support
  - Triggers
- MSN Explorer
- Networking Services
  - Internet Gateway Device Discovery and Control Client
  - Peer-to-Peer
  - RIP Listener
  - Simple TCP/IP Services
  - UPnP User Interface
- Other Network File and Print Services
  - Print Services for UNIX
- Outlook Express
- Update Root Certificates
- Windows Media Player
- Windows Messenger

## Installed Applications

Microsoft - Office Small Business Edition 2003

Microsoft - Internet Explorer

Microsoft - Office Access 2003

Microsoft - Office Excel 2003

Microsoft - Office Word 2003

Microsoft - Office Publisher 2003

Microsoft - Office PowerPoint 2003

Windows Defender

Network Associates VirusScan Enterprise Version

8.0.0

NTI CD&DVD Maker 7

Adobe Acrobat Version 7

Cyberlink PowerDVD

# Implementing an Active Directory Network

## Windows Services (Bold – Default Services; - Installed)

- |  |  |   |  |
|--|--|---|--|
| <input checked="" type="checkbox"/> <b>Alerter</b>                                     | <input type="checkbox"/> Message Queuing Triggers                                | <input checked="" type="checkbox"/> <b>Security Accounts Manager</b>                          | <input checked="" type="checkbox"/> <b>WMI Performance Adapter</b> |
| <input checked="" type="checkbox"/> <b>Application Layer Gateway Service</b>           | <input checked="" type="checkbox"/> <b>Messenger</b>                             | <input checked="" type="checkbox"/> <b>Security Center</b>                                    | <input checked="" type="checkbox"/> <b>Workstation</b>             |
| <input checked="" type="checkbox"/> <b>Application Management</b>                      | <input checked="" type="checkbox"/> <b>MS Software Shadow Copy Provider</b>      | <input checked="" type="checkbox"/> <b>Server</b>   | <input type="checkbox"/> World Wide Web Publishing                 |
| <input checked="" type="checkbox"/> <b>Automatic Updates</b>                           | <input checked="" type="checkbox"/> <b>Net Logon</b>                             | <input checked="" type="checkbox"/> <b>Shell Hardware Detection</b>                           | <b>OTHER:</b>  |
| <input checked="" type="checkbox"/> <b>Background Intelligent Transfer Service</b>     | <input checked="" type="checkbox"/> <b>NetMeeting Remote Desktop Sharing</b>     | <input type="checkbox"/> Simple Mail Transport Protocol (SMTP)                                | <input type="checkbox"/>   |
| <input checked="" type="checkbox"/> <b>Clipboard</b>                                   | <input checked="" type="checkbox"/> <b>Network Connections</b>                   | <input type="checkbox"/> Simple TCP/IP Services   | <input type="checkbox"/>   |
| <input checked="" type="checkbox"/> <b>COM+ Event System</b>                           | <input checked="" type="checkbox"/> <b>Network DDE</b>                           | <input checked="" type="checkbox"/> <b>Smart Card</b>   | <input type="checkbox"/>   |
| <input checked="" type="checkbox"/> <b>COM+ System Application</b>                     | <input checked="" type="checkbox"/> <b>Network DDE DSDM</b>                      | <input type="checkbox"/> SNMP Service   | <input type="checkbox"/>   |
| <input checked="" type="checkbox"/> <b>Computer Browser</b>                            | <input checked="" type="checkbox"/> <b>Network Location Awareness (NLA)</b>      | <input type="checkbox"/> SNMP Trap Service  | <input type="checkbox"/>   |
| <input checked="" type="checkbox"/> <b>Cryptographic Services</b>                      | <input checked="" type="checkbox"/> <b>Network Provisioning Service</b>          | <input checked="" type="checkbox"/> <b>SSDP Discovery Service</b>                             | <input type="checkbox"/>   |
| <input checked="" type="checkbox"/> <b>DCOM Server Process Launcher</b>                | <input checked="" type="checkbox"/> <b>NT LM Security Support Provider</b>       | <input checked="" type="checkbox"/> <b>System Event Notification</b>                          | <input type="checkbox"/>   |
| <input checked="" type="checkbox"/> <b>DHCP Client</b>                                 | <input type="checkbox"/> Peer Name Resolution Protocol                           | <input checked="" type="checkbox"/> <b>System Restore Service</b>                             | <input type="checkbox"/>   |
| <input checked="" type="checkbox"/> <b>Distributed Link Tracking Client</b>            | <input type="checkbox"/> Peer Networking   | <input checked="" type="checkbox"/> <b>Task Scheduler</b>                                     | <input type="checkbox"/>   |
| <input checked="" type="checkbox"/> <b>Distributed Transaction Coordinator</b>         | <input type="checkbox"/> Peer Networking Group Authentication                    | <input checked="" type="checkbox"/> <b>TCP/IP NetBIOS Helper</b>                              | <input type="checkbox"/>   |
| <input checked="" type="checkbox"/> <b>DNS Client</b>                                  | <input type="checkbox"/> Peer Networking Identity Manager                        | <input type="checkbox"/> TCP/IP Print Server  | <input type="checkbox"/>   |
| <input checked="" type="checkbox"/> <b>Error Reporting Service</b>                     | <input checked="" type="checkbox"/> <b>Performance Logs and Alerts</b>           | <input checked="" type="checkbox"/> <b>Telephony</b>  | <input type="checkbox"/>   |
| <input checked="" type="checkbox"/> <b>Event Log</b>                                   | <input checked="" type="checkbox"/> <b>Plug and Play</b>                         | <input checked="" type="checkbox"/> <b>Telnet</b>   | <input type="checkbox"/>   |
| <input checked="" type="checkbox"/> <b>Fast User Switching Compatibility</b>           | <input checked="" type="checkbox"/> <b>Portable Media Serial Number</b>          | <input checked="" type="checkbox"/> <b>Terminal Services</b>                                  | <input type="checkbox"/>   |
| <input type="checkbox"/> Fax   | <input checked="" type="checkbox"/> <b>Print Spooler</b>                         | <input checked="" type="checkbox"/> <b>Themes</b>   | <input type="checkbox"/>   |
| <input type="checkbox"/> FTP Publishing  | <input checked="" type="checkbox"/> <b>Protected Storage</b>                     | <input checked="" type="checkbox"/> <b>Uninterruptible Power Supply</b>                       | <input type="checkbox"/>   |
| <input checked="" type="checkbox"/> <b>Help and Support</b>                            | <input checked="" type="checkbox"/> <b>QoS RSVP</b>                              | <input checked="" type="checkbox"/> <b>Universal Plug and Play Device Host</b>                | <input type="checkbox"/>   |
| <input checked="" type="checkbox"/> <b>HTTP SSL</b>                                    | <input checked="" type="checkbox"/> <b>Remote Access Auto Connection Manager</b> | <input checked="" type="checkbox"/> <b>Volume Shadow Copy</b>                                 | <input type="checkbox"/>   |
| <input checked="" type="checkbox"/> <b>Human Interface Device Access</b>               | <input checked="" type="checkbox"/> <b>Remote Access Connection Manager</b>      | <input checked="" type="checkbox"/> <b>WebClient</b>  | <input type="checkbox"/>   |
| <input type="checkbox"/> IIS Admin   | <input checked="" type="checkbox"/> <b>Remote Desktop Help Session Manager</b>   | <input checked="" type="checkbox"/> <b>Windows Audio</b>                                      | <input type="checkbox"/>   |
| <input checked="" type="checkbox"/> <b>IMAPI CD-Burning COM Service</b>                | <input checked="" type="checkbox"/> <b>Remote Procedure Call (RPC)</b>           | <input checked="" type="checkbox"/> <b>Windows Firewall/Internet Connection Sharing (ICS)</b> | <input type="checkbox"/>   |
| <input checked="" type="checkbox"/> <b>Indexing Service</b>                            | <input checked="" type="checkbox"/> <b>Remote Procedure Call (RPC) Locator</b>   | <input checked="" type="checkbox"/> <b>Windows Image Acquisition (WIA)</b>                    | <input type="checkbox"/>   |
| <input checked="" type="checkbox"/> <b>IPSEC Services</b>                              | <input checked="" type="checkbox"/> <b>Remote Registry</b>                       | <input checked="" type="checkbox"/> <b>Windows Installer</b>                                  | <input type="checkbox"/>   |
| <input type="checkbox"/> IPv6 Helper   | <input checked="" type="checkbox"/> <b>Removable Storage</b>                     | <input checked="" type="checkbox"/> <b>Windows Management Instrumentation (WMI)</b>           | <input type="checkbox"/>   |
| <input checked="" type="checkbox"/> <b>Logical Disk Manager</b>                        | <input type="checkbox"/> RIP Listener  | <input checked="" type="checkbox"/> <b>WMI Driver Extensions</b>                              | <input type="checkbox"/>   |
| <input checked="" type="checkbox"/> <b>Logical Disk Manager Administrative Service</b> | <input checked="" type="checkbox"/> <b>Routing and Remote Access</b>             | <input checked="" type="checkbox"/> <b>Windows Time</b>                                       | <input type="checkbox"/>   |
| <input type="checkbox"/> Message Queuing   | <input checked="" type="checkbox"/> <b>Secondary Logon</b>                       | <input checked="" type="checkbox"/> <b>Wireless Zero Configuration</b>                        | <input type="checkbox"/>   |

## Implementing an Active Directory Network

### Installed Patches and Updates

KB867282  
KB873339  
KB885250  
KB885835  
KB885836  
KB886185  
KB887472  
KB887742  
KB888113  
KB888302  
KB890046  
KB890047  
KB890859  
KB891781  
KB893066  
KB893756  
KB893803V2  
KB894391  
KB896358  
KB896422  
KB896423  
KB896424  
KB896428

KB898461  
KB899587  
KB899589  
KB899591  
KB900485  
KB900725  
KB901017  
KB901190  
KB901214  
KB902400  
KB904706  
KB905414  
KB905749  
KB905915  
KB908519  
KB908531  
KB910437  
KB911562  
KB911567  
KB911927  
KB912812  
KB912919  
KB913446

M886903  
KB911565  
KB911565  
KB911565  
KB911564

# Implementing an Active Directory Network

## Basic Information

Operating System Windows XP Professional  
Computer Name Acer16  
Product Version Serviced Pack 2  
Organization Ead's Fence  
NetBios Name Acer16  
Installation Date December 30, 2005

## Physical Section

Memory 512 MB  
Physical Disk (1) Capacity 38.22 GB  
Physical Disk (2) Capacity 38.63 GB  
Logical Disks Capacity  
Network Interface Card (1) SiS 900-Based PCI Fast Ethernet Adapter

## Windows Configuration

Product Key BW2VG-XXDY6-VW3P7-YHQQ6-C7RYM  
Administrative Account Administrator  
Country or Region United States of America  
Regional Settings English (United States)  
Display Colors Use Windows Default  
Domain/Workgroup Name EADSFENCE  
Protocol(s) TCP/IP  
Computer TCP/IP Address (1) 192.168.1.31 Subnet 192.168.1.0  
DNS Server #1 192.168.1.250  
DHCP Configuration  Yes  No Gateway Address 192.168.1.1  
Automatic Updates  Enabled: Daily/3:00 A.M.  Download Only  Notify Only  Disabled  
Time Zone (GMT-05:00) Eastern time (US & Canada)  
Password \*\*\*\*\*  
Area Code 513  
Language Group Western Europe and United States  
Use Windows Default Display Refresh Frequency Use Windows Default

# Implementing an Active Directory Network

## Windows Components (Bold – Default Components; ☒ - Installed)

- Accessories and Utilities
  - Accessories
    - Calculator
    - Character Map
    - Clipboard Viewer
    - Desktop Wallpaper
    - Document Templates
    - Mouse Pointers
    - Paint
  - Games
    - Freecell
    - Hearts
    - Internet Games
    - Minesweeper
    - Solitaire
    - Spider Solitaire
  - Fax Services
  - Indexing Service
  - Internet Explorer

- Internet Information Service (IIS)
  - Common Files
  - Documentation
  - File Transfer Protocol (FTP) Service
  - FrontPage 2000 Server Extensions
  - Internet Information Services Snap-In
  - SMTP Service
    - SMTP Service
  - World Wide Web Service
    - Printers virtual directory
    - Remote Desktop Web Connection
    - Scripts virtual directory
    - World Wide Web Service
- Management and Monitoring Tools
  - Simple Network Management Protocol
  - WMI SNMP Provider

- Message Queuing
  - Active Directory Integration
  - Common
    - Core Functionality
    - Local Storage
  - MSMQ HTTP Support
  - Triggers
- MSN Explorer
- Networking Services
  - Internet Gateway Device Discovery and Control Client
  - Peer-to-Peer
  - RIP Listener
  - Simple TCP/IP Services
  - UPnP User Interface
- Other Network File and Print Services
  - Print Services for UNIX
- Outlook Express
- Update Root Certificates
- Windows Media Player
- Windows Messenger

## Installed Applications

- Microsoft - Office Small Business Edition 2003
- Microsoft - Internet Explorer
- Microsoft - Office Access 2003
- Microsoft - Office Excel 2003
- Microsoft - Office Word 2003
- Microsoft - Office Publisher 2003
- Microsoft - Office PowerPoint 2003
- Windows Defender
- Network Associates VirusScan Enterprise Version 8.0.0
- NTI CD&DVD Maker 7
- Adobe Acrobat Version 7
- Cyberlink PowerDVD

# Implementing an Active Directory Network

## Windows Services (Bold – Default Services; - Installed)

- |  |  |   |  |
|--|--|---|--|
| <input checked="" type="checkbox"/> <b>Alerter</b>                                     | <input type="checkbox"/> Message Queuing Triggers                                | <input checked="" type="checkbox"/> <b>Security Accounts Manager</b>                          | <input checked="" type="checkbox"/> <b>WMI Performance Adapter</b> |
| <input checked="" type="checkbox"/> <b>Application Layer Gateway Service</b>           | <input checked="" type="checkbox"/> <b>Messenger</b>                             | <input checked="" type="checkbox"/> <b>Security Center</b>                                    | <input checked="" type="checkbox"/> <b>Workstation</b>             |
| <input checked="" type="checkbox"/> <b>Application Management</b>                      | <input checked="" type="checkbox"/> <b>MS Software Shadow Copy Provider</b>      | <input checked="" type="checkbox"/> <b>Server</b>   | <input type="checkbox"/> World Wide Web Publishing                 |
| <input checked="" type="checkbox"/> <b>Automatic Updates</b>                           | <input checked="" type="checkbox"/> <b>Net Logon</b>                             | <input checked="" type="checkbox"/> <b>Shell Hardware Detection</b>                           | <b>OTHER:</b>  |
| <input checked="" type="checkbox"/> <b>Background Intelligent Transfer Service</b>     | <input checked="" type="checkbox"/> <b>NetMeeting Remote Desktop Sharing</b>     | <input type="checkbox"/> Simple Mail Transport Protocol (SMTP)                                | <input type="checkbox"/>   |
| <input checked="" type="checkbox"/> <b>Clipboard</b>                                   | <input checked="" type="checkbox"/> <b>Network Connections</b>                   | <input type="checkbox"/> Simple TCP/IP Services   | <input type="checkbox"/>   |
| <input checked="" type="checkbox"/> <b>COM+ Event System</b>                           | <input checked="" type="checkbox"/> <b>Network DDE</b>                           | <input checked="" type="checkbox"/> <b>Smart Card</b>   | <input type="checkbox"/>   |
| <input checked="" type="checkbox"/> <b>COM+ System Application</b>                     | <input checked="" type="checkbox"/> <b>Network DDE DSDM</b>                      | <input type="checkbox"/> SNMP Service   | <input type="checkbox"/>   |
| <input checked="" type="checkbox"/> <b>Computer Browser</b>                            | <input checked="" type="checkbox"/> <b>Network Location Awareness (NLA)</b>      | <input type="checkbox"/> SNMP Trap Service  | <input type="checkbox"/>   |
| <input checked="" type="checkbox"/> <b>Cryptographic Services</b>                      | <input checked="" type="checkbox"/> <b>Network Provisioning Service</b>          | <input checked="" type="checkbox"/> <b>SSDP Discovery Service</b>                             | <input type="checkbox"/>   |
| <input checked="" type="checkbox"/> <b>DCOM Server Process Launcher</b>                | <input checked="" type="checkbox"/> <b>NT LM Security Support Provider</b>       | <input checked="" type="checkbox"/> <b>System Event Notification</b>                          | <input type="checkbox"/>   |
| <input checked="" type="checkbox"/> <b>DHCP Client</b>                                 | <input type="checkbox"/> Peer Name Resolution Protocol                           | <input checked="" type="checkbox"/> <b>System Restore Service</b>                             | <input type="checkbox"/>   |
| <input checked="" type="checkbox"/> <b>Distributed Link Tracking Client</b>            | <input type="checkbox"/> Peer Networking   | <input checked="" type="checkbox"/> <b>Task Scheduler</b>                                     | <input type="checkbox"/>   |
| <input checked="" type="checkbox"/> <b>Distributed Transaction Coordinator</b>         | <input type="checkbox"/> Peer Networking Group Authentication                    | <input checked="" type="checkbox"/> <b>TCP/IP NetBIOS Helper</b>                              | <input type="checkbox"/>   |
| <input checked="" type="checkbox"/> <b>DNS Client</b>                                  | <input type="checkbox"/> Peer Networking Identity Manager                        | <input type="checkbox"/> TCP/IP Print Server  | <input type="checkbox"/>   |
| <input checked="" type="checkbox"/> <b>Error Reporting Service</b>                     | <input checked="" type="checkbox"/> <b>Performance Logs and Alerts</b>           | <input checked="" type="checkbox"/> <b>Telephony</b>  | <input type="checkbox"/>   |
| <input checked="" type="checkbox"/> <b>Event Log</b>                                   | <input checked="" type="checkbox"/> <b>Plug and Play</b>                         | <input checked="" type="checkbox"/> <b>Telnet</b>   | <input type="checkbox"/>   |
| <input checked="" type="checkbox"/> <b>Fast User Switching Compatibility</b>           | <input checked="" type="checkbox"/> <b>Portable Media Serial Number</b>          | <input checked="" type="checkbox"/> <b>Terminal Services</b>                                  | <input type="checkbox"/>   |
| <input type="checkbox"/> Fax   | <input checked="" type="checkbox"/> <b>Print Spooler</b>                         | <input checked="" type="checkbox"/> <b>Themes</b>   | <input type="checkbox"/>   |
| <input type="checkbox"/> FTP Publishing  | <input checked="" type="checkbox"/> <b>Protected Storage</b>                     | <input checked="" type="checkbox"/> <b>Uninterruptible Power Supply</b>                       | <input type="checkbox"/>   |
| <input checked="" type="checkbox"/> <b>Help and Support</b>                            | <input checked="" type="checkbox"/> <b>QoS RSVP</b>                              | <input checked="" type="checkbox"/> <b>Universal Plug and Play Device Host</b>                | <input type="checkbox"/>   |
| <input checked="" type="checkbox"/> <b>HTTP SSL</b>                                    | <input checked="" type="checkbox"/> <b>Remote Access Auto Connection Manager</b> | <input checked="" type="checkbox"/> <b>Volume Shadow Copy</b>                                 | <input type="checkbox"/>   |
| <input checked="" type="checkbox"/> <b>Human Interface Device Access</b>               | <input checked="" type="checkbox"/> <b>Remote Access Connection Manager</b>      | <input checked="" type="checkbox"/> <b>WebClient</b>  | <input type="checkbox"/>   |
| <input type="checkbox"/> IIS Admin   | <input checked="" type="checkbox"/> <b>Remote Desktop Help Session Manager</b>   | <input checked="" type="checkbox"/> <b>Windows Audio</b>                                      | <input type="checkbox"/>   |
| <input checked="" type="checkbox"/> <b>IMAPI CD-Burning COM Service</b>                | <input checked="" type="checkbox"/> <b>Remote Procedure Call (RPC)</b>           | <input checked="" type="checkbox"/> <b>Windows Firewall/Internet Connection Sharing (ICS)</b> | <input type="checkbox"/>   |
| <input checked="" type="checkbox"/> <b>Indexing Service</b>                            | <input checked="" type="checkbox"/> <b>Remote Procedure Call (RPC) Locator</b>   | <input checked="" type="checkbox"/> <b>Windows Image Acquisition (WIA)</b>                    | <input type="checkbox"/>   |
| <input checked="" type="checkbox"/> <b>IPSEC Services</b>                              | <input checked="" type="checkbox"/> <b>Remote Registry</b>                       | <input checked="" type="checkbox"/> <b>Windows Installer</b>                                  | <input type="checkbox"/>   |
| <input type="checkbox"/> IPv6 Helper   | <input checked="" type="checkbox"/> <b>Removable Storage</b>                     | <input checked="" type="checkbox"/> <b>Windows Management Instrumentation (WMI)</b>           | <input type="checkbox"/>   |
| <input checked="" type="checkbox"/> <b>Logical Disk Manager</b>                        | <input type="checkbox"/> RIP Listener  | <input checked="" type="checkbox"/> <b>WMI Driver Extensions</b>                              | <input type="checkbox"/>   |
| <input checked="" type="checkbox"/> <b>Logical Disk Manager Administrative Service</b> | <input checked="" type="checkbox"/> <b>Routing and Remote Access</b>             | <input checked="" type="checkbox"/> <b>Windows Time</b>                                       | <input type="checkbox"/>   |
| <input type="checkbox"/> Message Queuing   | <input checked="" type="checkbox"/> <b>Secondary Logon</b>                       | <input checked="" type="checkbox"/> <b>Wireless Zero Configuration</b>                        | <input type="checkbox"/>   |

# Implementing an Active Directory Network

## Installed Patches and Updates

KB867282  
KB873339  
KB885250  
KB885835  
KB885836  
KB886185  
KB887472  
KB887742  
KB888113  
KB888302  
KB890046  
KB890047  
KB890859  
KB891781  
KB893066  
KB893756  
KB893803V2  
KB894391  
KB896358  
KB896422  
KB896423  
KB896424  
KB896428

KB898461  
KB899587  
KB899589  
KB899591  
KB900485  
KB900725  
KB901017  
KB901190  
KB901214  
KB902400  
KB904706  
KB905414  
KB905749  
KB905915  
KB908519  
KB908531  
KB910437  
KB911562  
KB911567  
KB911927  
KB912812  
KB912919  
KB913446

M886903  
KB911565  
KB911565  
KB911565  
KB911564

**Date:** May 6, 2006

## Implementing an Active Directory Network

### Windows Components (Bold – Default Components; - Installed)

- Accessories and Utilities
  - Accessories
    - Calculator
    - Character Map
    - Clipboard Viewer
    - Desktop Wallpaper
    - Document Templates
    - Mouse Pointers
    - Paint
  - Games
    - Freecell
    - Hearts
    - Internet Games
    - Minesweeper
    - Solitaire
    - Spider Solitaire
  - Fax Services
  - Indexing Service
  - Internet Explorer
- Internet Information Service (IIS)
  - Common Files
  - Documentation
  - File Transfer Protocol (FTP) Service
  - FrontPage 2000 Server Extensions
  - Internet Information Services Snap-In
  - SMTP Service
    - SMTP Service
  - World Wide Web Service
    - Printers virtual directory
    - Remote Desktop Web Connection
    - Scripts virtual directory
    - World Wide Web Service
- Management and Monitoring Tools
  - Simple Network Management Protocol
  - WMI SNMP Provider
- Message Queuing
  - Active Directory Integration
  - Common
    - Core Functionality
    - Local Storage
    - MSMQ HTTP Support
    - Triggers
- MSN Explorer
- Networking Services
  - Internet Gateway Device Discovery and Control Client
  - Peer-to-Peer
  - RIP Listener
  - Simple TCP/IP Services
  - UPnP User Interface
- Other Network File and Print Services
  - Print Services for UNIX
- Outlook Express
- Update Root Certificates
- Windows Media Player
- Windows Messenger

### Installed Applications

- Microsoft - Office Small Business Edition 2003
  - Microsoft - Internet Explorer
  - Microsoft - Office Access 2003
  - Microsoft - Office Excel 2003
  - Microsoft - Office Word 2003
  - Microsoft - Office Publisher 2003
  - Microsoft - Office PowerPoint 2003
- Windows Defender
- Network Associates VirusScan Enterprise Version 8.0.0
- NTI CD&DVD Maker 7
- Adobe Acrobat Version 7
- Cyberlink PowerDVD

# Implementing an Active Directory Network

## Windows Services (Bold – Default Services; - Installed)

- |  |   |  |
|--|---|--|
| <input checked="" type="checkbox"/> <b>Alerter</b><br><input checked="" type="checkbox"/> <b>Application Layer Gateway Service</b><br><input checked="" type="checkbox"/> <b>Application Management</b><br><input checked="" type="checkbox"/> <b>Automatic Updates</b><br><input checked="" type="checkbox"/> <b>Background Intelligent Transfer Service</b><br><input checked="" type="checkbox"/> <b>Clipboard</b><br><input checked="" type="checkbox"/> <b>COM+ Event System</b><br><input checked="" type="checkbox"/> <b>COM+ System Application</b><br><input checked="" type="checkbox"/> <b>Computer Browser</b><br><input checked="" type="checkbox"/> <b>Cryptographic Services</b><br><input checked="" type="checkbox"/> <b>DCOM Server Process Launcher</b><br><input checked="" type="checkbox"/> <b>DHCP Client</b><br><input checked="" type="checkbox"/> <b>Distributed Link Tracking Client</b><br><input checked="" type="checkbox"/> <b>Distributed Transaction Coordinator</b><br><input checked="" type="checkbox"/> <b>DNS Client</b><br><input checked="" type="checkbox"/> <b>Error Reporting Service</b><br><input checked="" type="checkbox"/> <b>Event Log</b><br><input checked="" type="checkbox"/> <b>Fast User Switching Compatibility</b><br><input type="checkbox"/> <b>Fax</b><br><input type="checkbox"/> <b>FTP Publishing</b><br><input checked="" type="checkbox"/> <b>Help and Support</b><br><input checked="" type="checkbox"/> <b>HTTP SSL</b><br><br><input checked="" type="checkbox"/> <b>Human Interface Device Access</b><br><input type="checkbox"/> <b>IIS Admin</b><br><br><input checked="" type="checkbox"/> <b>IMAPI CD-Burning COM Service</b><br><br><input checked="" type="checkbox"/> <b>Indexing Service</b><br><br><input checked="" type="checkbox"/> <b>IPSEC Services</b><br><input type="checkbox"/> <b>IPv6 Helper</b><br><br><input checked="" type="checkbox"/> <b>Logical Disk Manager</b><br><input checked="" type="checkbox"/> <b>Logical Disk Manager Administrative Service</b><br><input type="checkbox"/> <b>Message Queuing</b> | <input type="checkbox"/> <b>Message Queuing Triggers</b><br><input checked="" type="checkbox"/> <b>Messenger</b><br><input checked="" type="checkbox"/> <b>MS Software Shadow Copy Provider</b><br><input checked="" type="checkbox"/> <b>Net Logon</b><br><input checked="" type="checkbox"/> <b>NetMeeting Remote Desktop Sharing</b><br><br><input checked="" type="checkbox"/> <b>Network Connections</b><br><input checked="" type="checkbox"/> <b>Network DDE</b><br><input checked="" type="checkbox"/> <b>Network DDE DSDM</b><br><input checked="" type="checkbox"/> <b>Network Location Awareness (NLA)</b><br><input checked="" type="checkbox"/> <b>Network Provisioning Service</b><br><input checked="" type="checkbox"/> <b>NT LM Security Support Provider</b><br><input type="checkbox"/> <b>Peer Name Resolution Protocol</b><br><input type="checkbox"/> <b>Peer Networking</b><br><input type="checkbox"/> <b>Peer Networking Group Authentication</b><br><input type="checkbox"/> <b>Peer Networking Identity Manager</b><br><input checked="" type="checkbox"/> <b>Performance Logs and Alerts</b><br><input checked="" type="checkbox"/> <b>Plug and Play</b><br><input checked="" type="checkbox"/> <b>Portable Media Serial Number</b><br><input checked="" type="checkbox"/> <b>Print Spooler</b><br><input checked="" type="checkbox"/> <b>Protected Storage</b><br><input checked="" type="checkbox"/> <b>QoS RSVP</b><br><input checked="" type="checkbox"/> <b>Remote Access Auto Connection Manager</b><br><input checked="" type="checkbox"/> <b>Remote Access Connection Manager</b><br><input checked="" type="checkbox"/> <b>Remote Desktop Help Session Manager</b><br><input checked="" type="checkbox"/> <b>Remote Procedure Call (RPC)</b><br><br><input checked="" type="checkbox"/> <b>Remote Procedure Call (RPC) Locator</b><br><input checked="" type="checkbox"/> <b>Remote Registry</b><br><input checked="" type="checkbox"/> <b>Removable Storage</b><br><br><input type="checkbox"/> <b>RIP Listener</b><br><input checked="" type="checkbox"/> <b>Routing and Remote Access</b><br><br><input checked="" type="checkbox"/> <b>Secondary Logon</b> | <input checked="" type="checkbox"/> <b>Security Accounts Manager</b><br><input checked="" type="checkbox"/> <b>Security Center</b><br><input checked="" type="checkbox"/> <b>Server</b><br><input checked="" type="checkbox"/> <b>Shell Hardware Detection</b><br><input type="checkbox"/> <b>Simple Mail Transport Protocol (SMTP)</b><br><br><input type="checkbox"/> <b>Simple TCP/IP Services</b><br><input checked="" type="checkbox"/> <b>Smart Card</b><br><input type="checkbox"/> <b>SNMP Service</b><br><input type="checkbox"/> <b>SNMP Trap Service</b><br><input checked="" type="checkbox"/> <b>SSDP Discovery Service</b><br><input checked="" type="checkbox"/> <b>System Event Notification</b><br><input checked="" type="checkbox"/> <b>System Restore Service</b><br><input checked="" type="checkbox"/> <b>Task Scheduler</b><br><input checked="" type="checkbox"/> <b>TCP/IP NetBIOS Helper</b><br><input type="checkbox"/> <b>TCP/IP Print Server</b><br><input checked="" type="checkbox"/> <b>Telephony</b><br><input checked="" type="checkbox"/> <b>Telnet</b><br><input checked="" type="checkbox"/> <b>Terminal Services</b><br><input checked="" type="checkbox"/> <b>Themes</b><br><input checked="" type="checkbox"/> <b>Uninterruptible Power Supply</b><br><input checked="" type="checkbox"/> <b>Universal Plug and Play Device Host</b><br><input checked="" type="checkbox"/> <b>Volume Shadow Copy</b><br><br><input checked="" type="checkbox"/> <b>WebClient</b><br><input checked="" type="checkbox"/> <b>Windows Audio</b><br><br><input checked="" type="checkbox"/> <b>Windows Firewall/Internet Connection Sharing (ICS)</b><br><input checked="" type="checkbox"/> <b>Windows Image Acquisition (WIA)</b><br><br><input checked="" type="checkbox"/> <b>Windows Installer</b><br><input checked="" type="checkbox"/> <b>Windows Management Instrumentation (WMI)</b><br><input checked="" type="checkbox"/> <b>WMI Driver Extensions</b><br><input checked="" type="checkbox"/> <b>Windows Time</b><br><br><input checked="" type="checkbox"/> <b>Wireless Zero Configuration</b> |
|  |   | <input checked="" type="checkbox"/> <b>WMI Performance Adapter</b><br><input checked="" type="checkbox"/> <b>Workstation</b><br><input type="checkbox"/> <b>World Wide Web Publishing</b><br><b>OTHER:</b><br><input type="checkbox"/>   |

## Implementing an Active Directory Network

### Installed Patches and Updates

KB867282  
KB873339  
KB885250  
KB885835  
KB885836  
KB886185  
KB887472  
KB887742  
KB888113  
KB888302  
KB890046  
KB890047  
KB890859  
KB891781  
KB893066  
KB893756  
KB893803V2  
KB894391  
KB896358  
KB896422  
KB896423  
KB896424  
KB896428

KB898461  
KB899587  
KB899589  
KB899591  
KB900485  
KB900725  
KB901017  
KB901190  
KB901214  
KB902400  
KB904706  
KB905414  
KB905749  
KB905915  
KB908519  
KB908531  
KB910437  
KB911562  
KB911567  
KB911927  
KB912812  
KB912919  
KB913446

M886903  
KB911565  
KB911565  
KB911565  
KB911564

Date: May 6, 2006

### Basic Information

Operating System	Windows XP Professional	NetBios Name	Acer19
Computer Name	Acer19	Installation Date	December 30, 2005
Product Version	Serviced Pack 2		
Organization	Ead's Fence		

### Physical Section

Memory	512 MB
Physical Disk (1) Capacity	38.22 GB
Physical Disk (2) Capacity	38.63 GB
Logical Disks Capacity	
Network Interface Card (1)	SiS 900-Based PCI Fast Ethernet Adapter

### Windows Configuration

Product Key	BW2VG-XXDY6-VW3P7-YHQQ6-C7RYM		Time Zone	(GMT-05:00) Eastern time (US & Canada)	
Administrative Account	Administrator		Password	*****	
Country or Region	United States of America		Area Code	513	
Regional Settings	English (United States)		Language Group	Western Europe and United States	
Display Colors	Use Windows Default	Display Screen Area	Use Windows Default	Display Refresh Frequency	Use Windows Default
Domain/Workgroup Name	EADSFENCE				
Protocol(s)	TCP/IP				
Computer TCP/IP Address (1)	192.168.1.30	Subnet	192.168.1.0		
DNS Server #1	192.168.1.250				
DHCP Configuration	<input checked="" type="checkbox"/> Yes <input type="checkbox"/> No	Gateway Address	192.168.1.1		
Automatic Updates	<input checked="" type="checkbox"/> Enabled: Daily/3:00 A.M. <input type="checkbox"/> Download Only <input type="checkbox"/> Notify Only <input type="checkbox"/> Disabled				

**Windows Components (Bold – Default Components;  - Installed)**

- Accessories and Utilities**
- Accessories**
- Calculator**
- Character Map**
- Clipboard Viewer**
- Desktop Wallpaper**
- Document Templates**
- Mouse Pointers**
- Paint**
- Games**
- Freecell**
- Hearts**
- Internet Games**
- Minesweeper**
- Solitaire**
- Spider Solitaire**
- Fax Services**
- Indexing Service**
- Internet Explorer**

- Internet Information Service (IIS)**
- Common Files**
- Documentation**
- File Transfer Protocol (FTP) Service**
- FrontPage 2000 Server Extensions**
- Internet Information Services Snap-In**
- SMTP Service**
- SMTP Service**
- World Wide Web Service**
- Printers virtual directory**
- Remote Desktop Web Connection**
- Scripts virtual directory**
- World Wide Web Service**
- Management and Monitoring Tools**
- Simple Network Management Protocol**
- WMI SNMP Provider**

- Message Queuing**
- Active Directory Integration**
- Common**
- Core Functionality**
- Local Storage**
- MSMQ HTTP Support**
- Triggers**
- MSN Explorer**
- Networking Services**
- Internet Gateway Device Discovery and Control Client**
- Peer-to-Peer**
- RIP Listener**
- Simple TCP/IP Services**
- UPnP User Interface**
- Other Network File and Print Services**
- Print Services for UNIX**
- Outlook Express**
- Update Root Certificates**
- Windows Media Player**
- Windows Messenger**

**Installed Applications**

Microsoft - Office Small Business Edition 2003

Microsoft - Internet Explorer

Microsoft - Office Access 2003

Microsoft - Office Excel 2003

Microsoft - Office Word 2003

Microsoft - Office Publisher 2003

Microsoft - Office PowerPoint 2003

Windows Defender

Network Associates VirusScan Enterprise Version

8.0.0

NTI CD&DVD Maker 7

Adobe Acrobat Version 7

Cyberlink PowerDVD



**Installed Patches and Updates**

KB867282  
KB873339  
KB885250  
KB885835  
KB885836  
KB886185  
KB887472  
KB887742  
KB888113  
KB888302  
KB890046  
KB890047  
KB890859  
KB891781  
KB893066  
KB893756  
KB893803V2  
KB894391  
KB896358  
KB896422  
KB896423  
KB896424  
KB896428

KB898461  
KB899587  
KB899589  
KB899591  
KB900485  
KB900725  
KB901017  
KB901190  
KB901214  
KB902400  
KB904706  
KB905414  
KB905749  
KB905915  
KB908519  
KB908531  
KB910437  
KB911562  
KB911567  
KB911927  
KB912812  
KB912919  
KB913446

M886903  
KB911565  
KB911565  
KB911565  
KB911564

Date: May 6, 2006

### Basic Information

Operating System	Windows XP Professional	NetBios Name	Acer20
Computer Name	Acer20	Installation Date	December 30, 2005
Product Version	Serviced Pack 2		
Organization	Ead's Fence		

### Physical Section

Memory	512 MB
Physical Disk (1) Capacity	38.22 GB
Physical Disk (2) Capacity	38.63 GB
Logical Disks Capacity	
Network Interface Card (1)	SiS 900-Based PCI Fast Ethernet Adapter

### Windows Configuration

Product Key	BW2VG-XXDY6-VW3P7-YHQQ6-C7RYM		Time Zone	(GMT-05:00) Eastern time (US & Canada)	
Administrative Account	Administrator		Password	*****	
Country or Region	United States of America		Area Code	513	
Regional Settings	English (United States)		Language Group	Western Europe and United States	
Display Colors	Use Windows Default	Display Screen Area	Use Windows Default	Display Refresh Frequency	Use Windows Default
Domain/Workgroup Name	EADSFENCE				
Protocol(s)	TCP/IP				
Computer TCP/IP Address (1)	192.168.1.10	Subnet	192.168.1.0		
DNS Server #1	192.168.1.250				
DHCP Configuration	<input checked="" type="checkbox"/> Yes	<input type="checkbox"/> No	Gateway Address	192.168.1.1	
Automatic Updates	<input checked="" type="checkbox"/> Enabled: Daily/3:00 A.M. <input type="checkbox"/> Download Only <input type="checkbox"/> Notify Only <input type="checkbox"/> Disabled				

## Implementing an Active Directory Network

### Windows Components (Bold – Default Components; - Installed)

- Accessories and Utilities
  - Accessories
    - Calculator
    - Character Map
    - Clipboard Viewer
    - Desktop Wallpaper
    - Document Templates
    - Mouse Pointers
    - Paint
  - Games
    - Freecell
    - Hearts
    - Internet Games
    - Minesweeper
    - Solitaire
    - Spider Solitaire
  - Fax Services
  - Indexing Service
  - Internet Explorer

- Internet Information Service (IIS)
  - Common Files
  - Documentation
  - File Transfer Protocol (FTP) Service
  - FrontPage 2000 Server Extensions
  - Internet Information Services Snap-In
  - SMTP Service
    - SMTP Service
  - World Wide Web Service
    - Printers virtual directory
    - Remote Desktop Web Connection
    - Scripts virtual directory
    - World Wide Web Service
- Management and Monitoring Tools
  - Simple Network Management Protocol
  - WMI SNMP Provider

- Message Queuing
  - Active Directory Integration
  - Common
    - Core Functionality
    - Local Storage
  - MSMQ HTTP Support
  - Triggers
- MSN Explorer
- Networking Services
  - Internet Gateway Device Discovery and Control Client
  - Peer-to-Peer
  - RIP Listener
  - Simple TCP/IP Services
  - UPnP User Interface
- Other Network File and Print Services
  - Print Services for UNIX
- Outlook Express
- Update Root Certificates
- Windows Media Player
- Windows Messenger

### Installed Applications

Microsoft - Office Small Business Edition 2003

Microsoft - Internet Explorer

Microsoft - Office Access 2003

Microsoft - Office Excel 2003

Microsoft - Office Word 2003

Microsoft - Office Publisher 2003

Microsoft - Office PowerPoint 2003

Windows Defender

Network Associates VirusScan Enterprise Version

8.0.0

NTI CD&DVD Maker 7

Adobe Acrobat Version 7

Cyberlink PowerDVD



**Installed Patches and Updates**

KB867282  
KB873339  
KB885250  
KB885835  
KB885836  
KB886185  
KB887472  
KB887742  
KB888113  
KB888302  
KB890046  
KB890047  
KB890859  
KB891781  
KB893066  
KB893756  
KB893803V2  
KB894391  
KB896358  
KB896422  
KB896423  
KB896424  
KB896428

KB898461  
KB899587  
KB899589  
KB899591  
KB900485  
KB900725  
KB901017  
KB901190  
KB901214  
KB902400  
KB904706  
KB905414  
KB905749  
KB905915  
KB908519  
KB908531  
KB910437  
KB911562  
KB911567  
KB911927  
KB912812  
KB912919  
KB913446

M886903  
KB911565  
KB911565  
KB911565  
KB911564

# Implementing an Active Directory Network

## Basic Information

Operating System	Windows XP Professional	NetBios Name	Acer21
Computer Name	Acer21	Installation Date	December 30, 2005
Product Version	Serviced Pack 2		
Organization	Ead's Fence		

## Physical Section

Memory	512 MB
Physical Disk (1) Capacity	38.22 GB
Physical Disk (2) Capacity	38.63 GB
Logical Disks Capacity	
Network Interface Card (1)	SiS 900-Based PCI Fast Ethernet Adapter

## Windows Configuration

Product Key	BW2VG-XXDY6-VW3P7-YHQQ6-C7RYM		Time Zone	(GMT-05:00) Eastern time (US & Canada)	
Administrative Account	Administrator		Password	*****	
Country or Region	United States of America		Area Code	513	
Regional Settings	English (United States)		Language Group	Western Europe and United States	
Display Colors	Use Windows Default	Display Screen Area	Use Windows Default	Display Refresh Frequency	Use Windows Default
Domain/Workgroup Name	EADSFENCE				
Protocol(s)	TCP/IP				
Computer TCP/IP Address (1)	192.168.1.34	Subnet	192.168.1.0		
DNS Server #1	192.168.1.250				
DHCP Configuration	<input checked="" type="checkbox"/> Yes	<input type="checkbox"/> No	Gateway Address	192.168.1.1	
Automatic Updates	<input checked="" type="checkbox"/> Enabled: Daily/3:00 A.M. <input type="checkbox"/> Download Only <input type="checkbox"/> Notify Only <input type="checkbox"/> Disabled				

## Implementing an Active Directory Network

### Windows Components (Bold – Default Components; - Installed)

Accessories and Utilities

Accessories

Calculator

Character Map

Clipboard Viewer

Desktop Wallpaper

Document Templates

Mouse Pointers

Paint

Games

Freecell

Hearts

Internet Games

Minesweeper

Solitaire

Spider Solitaire

Fax Services

Indexing Service

Internet Explorer

Internet Information Service (IIS)

Common Files

Documentation

File Transfer Protocol (FTP) Service

FrontPage 2000 Server Extensions

Internet Information Services Snap-In

SMTP Service

SMTP Service

World Wide Web Service

Printers virtual directory

Remote Desktop Web Connection

Scripts virtual directory

World Wide Web Service

Management and Monitoring Tools

Simple Network Management Protocol

WMI SNMP Provider

Message Queuing

Active Directory Inton

Common

Core Functionalit

Local Storage

MSMQ HTTP Supp

Triggers

MSN Explorer

Networking Services

Internet Gateway to Discovery and Control Client

Peer-to-Peer

RIP Listener

Simple TCP/IP Sen

UPnP User Interfac

Other Network File and Services

Print Services for U

Outlook Express

Update Root Certific

Windows Media Play

Windows Messenger

### Installed Applications

Microsoft - Office Small Business Edition 2003

Microsoft - Internet Explorer

Microsoft - Office Access 2003

Microsoft - Office Excel 2003

Microsoft - Office Word 2003

Microsoft - Office Publisher 2003

Microsoft - Office PowerPoint 2003

Windows Defender

Network Associates VirusScan Enterprise Version

8.0.0

NTI CD&DVD Maker 7

Adobe Acrobat Version 7

Cyberlink PowerDVD

**Windows Services (Bold – Default Services;  - Installed)**

- |  |  |   |  |
|--|--|---|--|
| <input checked="" type="checkbox"/> <b>Alerter</b>                                     | <input type="checkbox"/> Message Queuing Triggers                                | <input checked="" type="checkbox"/> <b>Security Accounts Manager</b>                          | <input checked="" type="checkbox"/> <b>WMI Performance Adapter</b> |
| <input checked="" type="checkbox"/> <b>Application Layer Gateway Service</b>           | <input checked="" type="checkbox"/> <b>Messenger</b>                             | <input checked="" type="checkbox"/> <b>Security Center</b>                                    | <input checked="" type="checkbox"/> <b>Workstation</b>             |
| <input checked="" type="checkbox"/> <b>Application Management</b>                      | <input checked="" type="checkbox"/> <b>MS Software Shadow Copy Provider</b>      | <input checked="" type="checkbox"/> <b>Server</b>   | <input type="checkbox"/> World Wide Web Publishing                 |
| <input checked="" type="checkbox"/> <b>Automatic Updates</b>                           | <input checked="" type="checkbox"/> <b>Net Logon</b>                             | <input checked="" type="checkbox"/> <b>Shell Hardware Detection</b>                           | <b>OTHER:</b>  |
| <input checked="" type="checkbox"/> <b>Background Intelligent Transfer Service</b>     | <input checked="" type="checkbox"/> <b>NetMeeting Remote Desktop Sharing</b>     | <input type="checkbox"/> Simple Mail Transport Protocol (SMTP)                                | <input type="checkbox"/>   |
| <input checked="" type="checkbox"/> <b>Clipboard</b>                                   | <input checked="" type="checkbox"/> <b>Network Connections</b>                   | <input type="checkbox"/> Simple TCP/IP Services   | <input type="checkbox"/>   |
| <input checked="" type="checkbox"/> <b>COM+ Event System</b>                           | <input checked="" type="checkbox"/> <b>Network DDE</b>                           | <input checked="" type="checkbox"/> <b>Smart Card</b>   | <input type="checkbox"/>   |
| <input checked="" type="checkbox"/> <b>COM+ System Application</b>                     | <input checked="" type="checkbox"/> <b>Network DDE DSDM</b>                      | <input type="checkbox"/> SNMP Service   | <input type="checkbox"/>   |
| <input checked="" type="checkbox"/> <b>Computer Browser</b>                            | <input checked="" type="checkbox"/> <b>Network Location Awareness (NLA)</b>      | <input type="checkbox"/> SNMP Trap Service  | <input type="checkbox"/>   |
| <input checked="" type="checkbox"/> <b>Cryptographic Services</b>                      | <input checked="" type="checkbox"/> <b>Network Provisioning Service</b>          | <input checked="" type="checkbox"/> <b>SSDP Discovery Service</b>                             | <input type="checkbox"/>   |
| <input checked="" type="checkbox"/> <b>DCOM Server Process Launcher</b>                | <input checked="" type="checkbox"/> <b>NT LM Security Support Provider</b>       | <input checked="" type="checkbox"/> <b>System Event Notification</b>                          | <input type="checkbox"/>   |
| <input checked="" type="checkbox"/> <b>DHCP Client</b>                                 | <input type="checkbox"/> Peer Name Resolution Protocol                           | <input checked="" type="checkbox"/> <b>System Restore Service</b>                             | <input type="checkbox"/>   |
| <input checked="" type="checkbox"/> <b>Distributed Link Tracking Client</b>            | <input type="checkbox"/> Peer Networking   | <input checked="" type="checkbox"/> <b>Task Scheduler</b>                                     | <input type="checkbox"/>   |
| <input checked="" type="checkbox"/> <b>Distributed Transaction Coordinator</b>         | <input type="checkbox"/> Peer Networking Group Authentication                    | <input checked="" type="checkbox"/> <b>TCP/IP NetBIOS Helper</b>                              | <input type="checkbox"/>   |
| <input checked="" type="checkbox"/> <b>DNS Client</b>                                  | <input type="checkbox"/> Peer Networking Identity Manager                        | <input type="checkbox"/> TCP/IP Print Server  | <input type="checkbox"/>   |
| <input checked="" type="checkbox"/> <b>Error Reporting Service</b>                     | <input checked="" type="checkbox"/> <b>Performance Logs and Alerts</b>           | <input checked="" type="checkbox"/> <b>Telephony</b>  | <input type="checkbox"/>   |
| <input checked="" type="checkbox"/> <b>Event Log</b>                                   | <input checked="" type="checkbox"/> <b>Plug and Play</b>                         | <input checked="" type="checkbox"/> <b>Telnet</b>   | <input type="checkbox"/>   |
| <input checked="" type="checkbox"/> <b>Fast User Switching Compatibility</b>           | <input checked="" type="checkbox"/> <b>Portable Media Serial Number</b>          | <input checked="" type="checkbox"/> <b>Terminal Services</b>                                  | <input type="checkbox"/>   |
| <input type="checkbox"/> Fax   | <input checked="" type="checkbox"/> <b>Print Spooler</b>                         | <input checked="" type="checkbox"/> <b>Themes</b>   | <input type="checkbox"/>   |
| <input type="checkbox"/> FTP Publishing  | <input checked="" type="checkbox"/> <b>Protected Storage</b>                     | <input checked="" type="checkbox"/> <b>Uninterruptible Power Supply</b>                       | <input type="checkbox"/>   |
| <input checked="" type="checkbox"/> <b>Help and Support</b>                            | <input checked="" type="checkbox"/> <b>QoS RSVP</b>                              | <input checked="" type="checkbox"/> <b>Universal Plug and Play Device Host</b>                | <input type="checkbox"/>   |
| <input checked="" type="checkbox"/> <b>HTTP SSL</b>                                    | <input checked="" type="checkbox"/> <b>Remote Access Auto Connection Manager</b> | <input checked="" type="checkbox"/> <b>Volume Shadow Copy</b>                                 | <input type="checkbox"/>   |
| <input checked="" type="checkbox"/> <b>Human Interface Device Access</b>               | <input checked="" type="checkbox"/> <b>Remote Access Connection Manager</b>      | <input checked="" type="checkbox"/> <b>WebClient</b>  | <input type="checkbox"/>   |
| <input type="checkbox"/> IIS Admin   | <input checked="" type="checkbox"/> <b>Remote Desktop Help Session Manager</b>   | <input checked="" type="checkbox"/> <b>Windows Audio</b>                                      | <input type="checkbox"/>   |
| <input checked="" type="checkbox"/> <b>IMAPI CD-Burning COM Service</b>                | <input checked="" type="checkbox"/> <b>Remote Procedure Call (RPC) Manager</b>   | <input checked="" type="checkbox"/> <b>Windows Firewall/Internet Connection Sharing (ICS)</b> | <input type="checkbox"/>   |
| <input checked="" type="checkbox"/> <b>Indexing Service</b>                            | <input checked="" type="checkbox"/> <b>Remote Procedure Call (RPC) Locator</b>   | <input checked="" type="checkbox"/> <b>Windows Image Acquisition (WIA)</b>                    | <input type="checkbox"/>   |
| <input checked="" type="checkbox"/> <b>IPSEC Services</b>                              | <input checked="" type="checkbox"/> <b>Remote Registry</b>                       | <input checked="" type="checkbox"/> <b>Windows Installer</b>                                  | <input type="checkbox"/>   |
| <input type="checkbox"/> IPv6 Helper   | <input checked="" type="checkbox"/> <b>Removable Storage</b>                     | <input checked="" type="checkbox"/> <b>Windows Management Instrumentation (WMI)</b>           | <input type="checkbox"/>   |
| <input checked="" type="checkbox"/> <b>Logical Disk Manager</b>                        | <input type="checkbox"/> RIP Listener  | <input checked="" type="checkbox"/> <b>WMI Driver Extensions</b>                              | <input type="checkbox"/>   |
| <input checked="" type="checkbox"/> <b>Logical Disk Manager Administrative Service</b> | <input checked="" type="checkbox"/> <b>Routing and Remote Access</b>             | <input checked="" type="checkbox"/> <b>Windows Time</b>                                       | <input type="checkbox"/>   |
| <input type="checkbox"/> Message Queuing   | <input checked="" type="checkbox"/> <b>Secondary Logon</b>                       | <input checked="" type="checkbox"/> <b>Wireless Zero Configuration</b>                        | <input type="checkbox"/>   |

**Installed Patches and Updates**

KB867282  
KB873339  
KB885250  
KB885835  
KB885836  
KB886185  
KB887472  
KB887742  
KB888113  
KB888302  
KB890046  
KB890047  
KB890859  
KB891781  
KB893066  
KB893756  
KB893803V2  
KB894391  
KB896358  
KB896422  
KB896423  
KB896424  
KB896428

KB898461  
KB899587  
KB899589  
KB899591  
KB900485  
KB900725  
KB901017  
KB901190  
KB901214  
KB902400  
KB904706  
KB905414  
KB905749  
KB905915  
KB908519  
KB908531  
KB910437  
KB911562  
KB911567  
KB911927  
KB912812  
KB912919  
KB913446

M886903  
KB911565  
KB911565  
KB911565  
KB911564

## 8.0 References

1. Arkilis, Brian and Ross Wilper. "Overview of Active Directory Security". <http://windows.stanford.edu/Public/Security/ADSecurityOverview.htm> December 3, 2002
2. Clark, Graham. Orebaugh, Angela. Rash Michael. "Intrusion prevention and active response : deploying network and host IPS". Rockland, Mass., 2005
3. Droubi, Omar. Gardinier, Kenton. Morimoto, Rand. Noel, Michael. "Microsoft Windows server 2003 : unleashed". Indianapolis, Ind. : SAMS, 2003
4. Feit, Sidnie. "Local area high speed networks". Indianapolis, Ind. : Macmillan Technical Publishing, 2000
5. Farrel, Adrian. "The Internet and its protocols". Amsterdam ; Boston : Morgan Kaufmann Publishers, 2004
6. Microsoft. "Active Directory Collection". <http://www.microsoft.com/technet/> March 28, 2003
7. Microsoft. "Best Practice Guide for Securing Active Directory Installations". <http://www.serverdocs.com/library/450>. April 8, 2005.
8. Minasi, Mark. "Mastering Windows Server 2003". Alameda: Sybex, 2003
9. Policht, Marcin. "Exploring Windows 2003 Security". <http://www.serverwatch.com/tutorials/article.php/3075971> September 11, 2003
10. Srikanth, Ayikudy. "Increasing Reliability and Failover with the Virtual Router Redundancy Protocol". Boston: Addison-Wesley, 2002