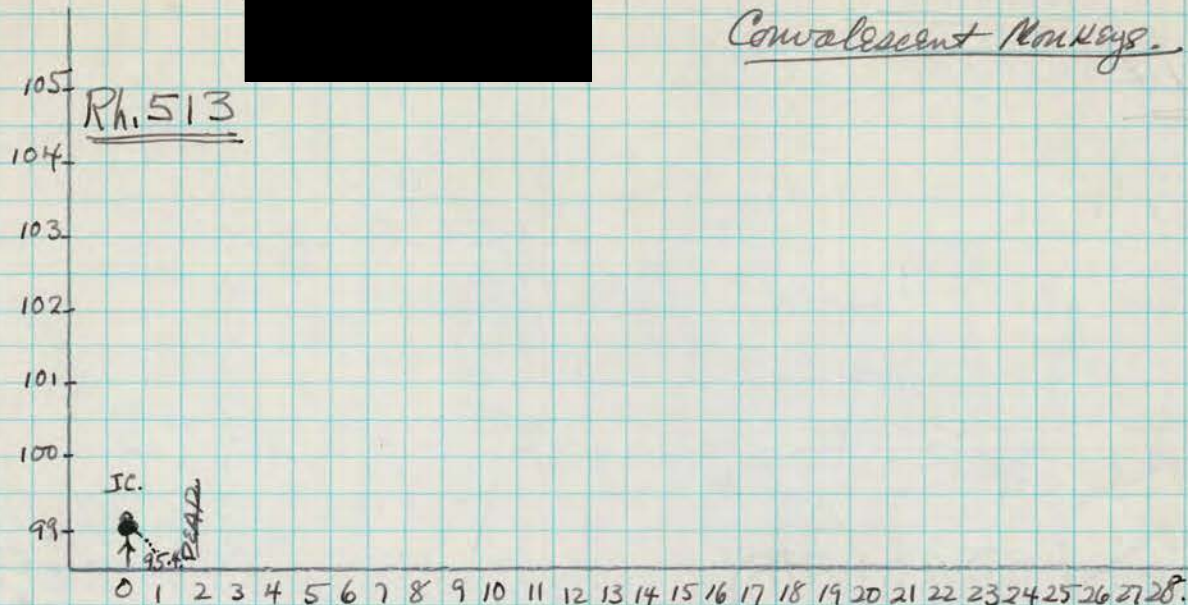


HETEROL

SEP 10 1948 Challenge Re-Inoculation with Homologous Virus (Polio)

Convalescent Monkeys.



SEP 10 1948 - Challenged by IC virus, <sup>(not from 20)</sup> of 1.0 cc of 20% poliovirus (Grn. III), the simultaneous control monkey is Rh. 824 (g.v.). - Date of original inoc. was 5-28-48.

CLINICAL CONDITION AT TIME OF CHALLENGE: Complete paralysis of left lower; almost complete par. of rt. lower with only elevation of foot preserved; There is marked atrophy of both lowers. Uppers O.K.; animal is however generally weak and passive and has diarrhea; is thin and in poor general condition.

9-11-48. - General condition very poor - T = 95.4.

9-12-48 - DEAD. Autopsy: very marked muscular atrophy; emaciation extreme with almost no fat anywhere; no pulmonary TB; there are 2 areas of atelectasis each about 2 cms. across; no peritonitis.

TISSUE FOR SECTION: 4 lumbar, 2 Thoracic, 4 Cervical; 2 Medulla; 1 midbrain and thalamus. (Z.A.)

HISTOLOGY: Spinal cord levels show extensive neuronal loss; glial infiltration throughout ant horns; moderate extent of root degeneration, most marked in lumbar and to lesser extent in thoracic cord.

Medulla shows extensive IV cuffing, with loose and with dense glial infiltrate; likewise hypothalamus and thalamus; There is some fresh blood in the third ventricle - ? traumatic hemorrhage.

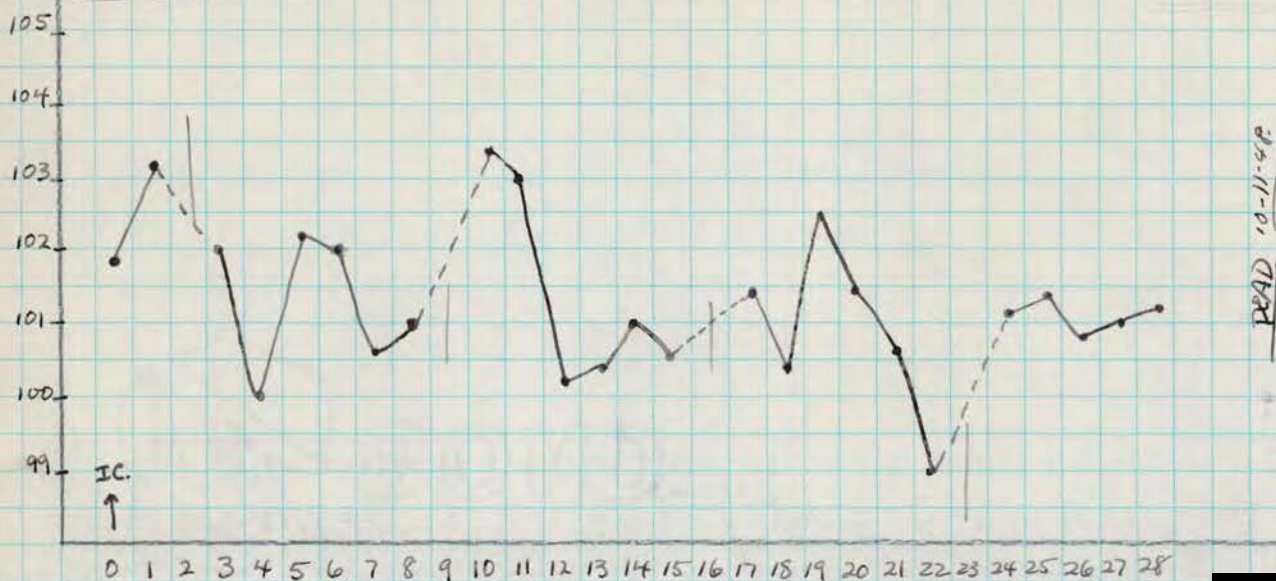
DIAGNOSIS: POLIO (old)

SEP 10 1948

Challenge Re-Inoculation with Homologous Virus (Polio)

Convalescent Monkey

Rh. 514



SEP 10 1948 - Challenged by IC inoc. (rt. frontal) of 1.0 cc of 20% [redacted] polio virus (Csm III); simultaneous control monkey is Rh. 824 (g.v.), - Date of original inoculation was 5-28-48.

CLINICAL CONDITION AT TIME OF CHALLENGE: compl. paralysis of rt. lower; almost complete par. left lower - with only feeble foot motion preserved; moderately severe atrophy of both lowers; mild atrophy of left upper. - Poor general condition; Thin; diarrhea.

9-23-48. No motor change; general condition worse; getting very thin; diarrhea seems milder however.

10-11-48 DEAD: Autopsy: no gross TBC; emaciated.

Tissues: Thalamus; 2 midbrain; 3 medulla; 6 cervical; 2 thoracic; 5 lumbar. (Z.A.)

HISTOLOGY: Spinal cord shows extensive neuronal loss; foci of diffuse glial (and round cell) infiltration as well as PV infiltration; and root degeneration but no foci of acute or recent neuronal changes. - Medulla is normal except for a few lightly "peppered" areas of glial infiltration in the reticular formation. - Midbrain shows mild OPV cuffing with scattered foci of glial infiltration. Corp. Striatum - several small cuffed vessels

DIAGNOSIS: POLIO ("old")

SEP 10 1948

Challenge Re-Inoculation with Homologous Virus (Polio)

- Convalescent Monkey.



SEP 10 1948 - Challenged by IC in. (nt. frontal) of 1.0 cc of 20% [redacted] polio virus (62111).  
 The simultaneous control monkey is Rh. 824 (g.v. overlay). Date of the original inoculation was 5-28-48.

CLINICAL CONDITION AT TIME OF CHALLENGE: almost complete paralysis of both lowers - can elevate and depress feet. - Severe atrophy of both lowers, mild atrophy of both uppers - a little more pronounced in left upper; gets around well by use of uppers; head and neck O.K.

10-21-48 Heterologous challenge with [redacted] strain (polio) (see record together with control - Rh. 1013.

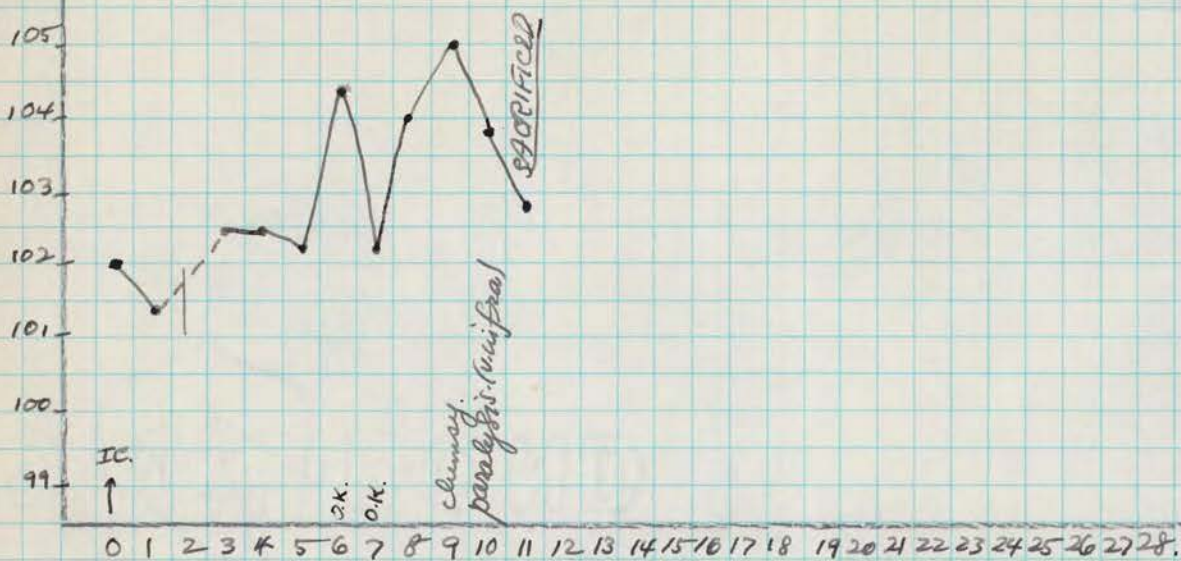
SEP 10 1948

Challenge P.C. Inoculation Test

CONTROL MONKEY

POLIO VIRUS.

Ph. # 824 - Control for Ph. 513, 514; 521.



SEP 10 1948 - inoculated IC (left frontal) with 1.0 cc of 20% [redacted] polio virus (Gen. III) - as control for Ph. 513, 514, 521 (g.v.).

9-18-48 (8<sup>th</sup> day). Thin; mild diarrhea; piloerector response; easily exhausted but no focal weakness or paralysis.

9-19-48 (9<sup>th</sup> day); clumsy; easily exhausted; will not climb. T=105°.

9-20-48 (10<sup>th</sup> day) - Complete paralysis of both lowers; partial par. of both uppers; weak neck + back. -

9-21-48 (11<sup>th</sup> day) - Quadriplegia; with preservation of wrist movements; voice is weak. - Sacrificed - Autopsy - no gross TBc.

TISSUE FOR SECTION: 3 segments each of lumbar + cervical cord. (2A).

11-19-48 tissues discarded