

MICE  
-  
i.p. 21370  
cid V

# Effect of Intraperitoneal Administration of PLASMOCID on Subsequent Reaction to [REDACTED]

PROCEDURE - 60 mice weighing about 10 Gm each will receive 6.2 mg. base/Kilo twice a day intraperitoneally - i.e. 0.5 cc of solution containing 0.125 mg. base per cc. (~~37.5 cc of 2 mg base/cc sol.~~ ~~56.3 cc~~ prepare 1:16 dilution of 2 mg/cc stock solution, i.e. 2.5 cc of stock + 37.5 cc of saline) will be injected in morning and afternoon

Total amount of 2 mg/cc stock solution needed for one week for 60 mice:

$$2.5 \text{ cc} \times 2 = 5 \text{ cc per day or } \underline{35 \text{ cc/week}}$$

Drug used for this experiment is the dihydrochloride containing 80% base.

Therefore prepare 50 cc of solution

$$2 \text{ mg base/cc} \times 50 = 100 \text{ mg base or } \frac{100}{80} = \underline{125 \text{ mg.}}$$

of the drug per 50 cc.

One week after the mice shall have been on the drug:

30 mice will receive Lausning Virus 1:100  
30 " " " " " " 1:1000

---

Controls of Same Weight - 30 mice - virus 1:100  
30 " - virus 1:1000

6.2mg base bid. **VIRUS 10<sup>-2</sup> on SEPT. 22**  
**PLASMOCID intraperitoneally in MICE - III**

**PLASMOCID i.p. mice LANSING 10<sup>-2</sup>** September 16

	1	2	3	4	5	6	7	8	9	10	11	12	13	14	15	16	17	18	19	20
<b>A</b> LANSING 10 <sup>-2</sup>				E <sub>R</sub>	D			E <sub>R</sub>	E <sub>R</sub>	E <sub>R</sub>	E <sub>R</sub>	P	PP	PP						
TOTAL WT:	92.5	101.5	100.5	104.5	108	105.5	113	111	108.5	111	100.5	101	102.5	102	91	70	43	20	21	21.5
Average:	9.2	10.1	10	10.4	10.8	11.6	12.5	12.3	12.0	12.3	12.5	12.6	12.8	12.7	13	14	14.3	20	21	21.5
<b>B</b> 10 <sup>-2</sup>												P	PP	PP	PP					
TOTAL WT:	94.5	104	106	109	115	122.5	133	135	136	142	134.5	137	136	127	128	122	108	106	82	81
Average:	9.4	10.4	10.6	10.9	11.5	12.2	13.3	13.5	13.6	14.2	13.4	13.7	13.6	14.1	14.2	15.2	15.4	15.1	16.4	16.2
<b>C</b> 10 <sup>-2</sup>																				
WT:	94	100	102.5	105.5	112	118	128	127.5	125	127	126	117	115	114	100	85	74.5	74	72	69
Av:	9.4	10	10.3	10.5	11.2	11.8	12.8	12.7	12.5	12.7	12.6	13	12.7	12.6	12.5	12.1	12.2	14.8	14.4	13.8

	21	22	23	24	25	26	27	28	29	30	31	32	33	34	35
EXPERIMENT III															
TOTAL WT:	21	21	18	15	13										
Average:	21	21	18	15	13										
TOTAL WT:	62	65	49	45	44	45	46	46	33	35	35	35	36	33	
Average:	15.5	16.2	16.3	15	14.9	15	15.3	15.3	16.5	17.2	17.2	17.2	18	16.5	
WT:	62	61	59	57	42	29	29	28	30	29	30	31	31.5	29	
Av:	15.5	15.2	14.7	17.0	14	14.5	14.5	14	15	14.5	15	15.5	15.5	14.5	

SEPT. 15: 16 17 18 19 20 21 22 23 24 25 26 27 28 29 30 31 2 3 4  
 29 29 25 29 29 29 29 29 29 29 29 29 29 29 29 29 29 29 29 29 29  
 Av 10<sup>-2</sup> 12.8 12.7 13 12.8 13.1 13 13.1 13.2 13.7 13.9 16.6 17.2 17.1

17.3 6 7 8 9 10 11 12 13 14 15 16 17 18 19 20 21 22  
 29 29 29 29 29 29 29 28 28 28 28 28 28 28 28 28 28 28 28 28 28  
 17.5 17.4 16.3 15.0 13.9 14.7 14.9 14.6 14.2 15.8 16.1 16.2 17.5 15.5

CNS → = Mouse head to side to the right

Discard 10/29

Discard maggots on 10/29

Discard 10/29

6.2 mg base-bid. PLASMOCID intraperitoneally in MICE - III

LANSING VIRUS - 10<sup>-3</sup> 1 c.c.v. September 15 48.

	1	2	3	4	5	6	7	8	9	10	11	12	13	14	15	16	17	18	19	20	21	22	23	24	25	26	27	28	29	30	31	32	33	34	35			
D 10 <sup>-3</sup>	1	-	-	-	-	-	-	-	-	-	-	-	-	-	-	-	-	-	-	-	-	-	-	-	-	-	-	-	-	-	-	-	-	-	-	-	-	
	2	-	-	-	-	-	-	-	-	-	-	-	-	-	-	-	-	-	-	-	-	-	-	-	-	-	-	-	-	-	-	-	-	-	-	-	-	
	3	-	-	-	-	-	-	-	-	-	-	-	-	-	-	-	-	-	-	-	-	-	-	-	-	-	-	-	-	-	-	-	-	-	-	-	-	
	4	-	-	-	-	-	-	-	-	-	-	-	-	-	-	-	-	-	-	-	-	-	-	-	-	-	-	-	-	-	-	-	-	-	-	-	-	
	5	-	-	-	-	-	-	-	-	-	-	-	-	-	-	-	-	-	-	-	-	-	-	-	-	-	-	-	-	-	-	-	-	-	-	-	-	
	6	-	-	-	-	-	-	-	-	-	-	-	-	-	-	-	-	-	-	-	-	-	-	-	-	-	-	-	-	-	-	-	-	-	-	-	-	
	7	-	-	-	-	-	-	-	-	-	-	-	-	-	-	-	-	-	-	-	-	-	-	-	-	-	-	-	-	-	-	-	-	-	-	-	-	
	8	-	-	-	-	-	-	-	-	-	-	-	-	-	-	-	-	-	-	-	-	-	-	-	-	-	-	-	-	-	-	-	-	-	-	-	-	
	9	-	-	-	-	-	-	-	-	-	-	-	-	-	-	-	-	-	-	-	-	-	-	-	-	-	-	-	-	-	-	-	-	-	-	-	-	
	10	-	-	-	-	-	-	-	-	-	-	-	-	-	-	-	-	-	-	-	-	-	-	-	-	-	-	-	-	-	-	-	-	-	-	-	-	
Total Wt:	96	103.5	105	108.0	114	119.5	128	127	125	132	130	134	137	141	142	142.5	143	115	115	96	99	94	79	72	63	65	65	65	57	43	44	44	46	48				
Average:	9.6	10.3	11.5	10.8	11.4	11.9	12.8	12.7	12.5	13.2	13	13.4	13.7	14.1	14.2	14.2	14.3	13	12.6	13.2	14	13.4	13.1	14	13.6	13.0	13	13	14.2	14.3	14.6	14.6	15.3	16				
E 10 <sup>-3</sup>	1	-	-	-	-	-	-	-	-	-	-	-	-	-	-	-	-	-	-	-	-	-	-	-	-	-	-	-	-	-	-	-	-	-	-	-	-	
	2	-	-	-	-	-	-	-	-	-	-	-	-	-	-	-	-	-	-	-	-	-	-	-	-	-	-	-	-	-	-	-	-	-	-	-	-	
	3	-	-	-	-	-	-	-	-	-	-	-	-	-	-	-	-	-	-	-	-	-	-	-	-	-	-	-	-	-	-	-	-	-	-	-	-	
	4	-	-	-	-	-	-	-	-	-	-	-	-	-	-	-	-	-	-	-	-	-	-	-	-	-	-	-	-	-	-	-	-	-	-	-	-	-
	5	-	-	-	-	-	-	-	-	-	-	-	-	-	-	-	-	-	-	-	-	-	-	-	-	-	-	-	-	-	-	-	-	-	-	-	-	-
	6	-	-	-	-	-	-	-	-	-	-	-	-	-	-	-	-	-	-	-	-	-	-	-	-	-	-	-	-	-	-	-	-	-	-	-	-	-
	7	-	-	-	-	-	-	-	-	-	-	-	-	-	-	-	-	-	-	-	-	-	-	-	-	-	-	-	-	-	-	-	-	-	-	-	-	-
	8	-	-	-	-	-	-	-	-	-	-	-	-	-	-	-	-	-	-	-	-	-	-	-	-	-	-	-	-	-	-	-	-	-	-	-	-	-
	9	-	-	-	-	-	-	-	-	-	-	-	-	-	-	-	-	-	-	-	-	-	-	-	-	-	-	-	-	-	-	-	-	-	-	-	-	-
	10	-	-	-	-	-	-	-	-	-	-	-	-	-	-	-	-	-	-	-	-	-	-	-	-	-	-	-	-	-	-	-	-	-	-	-	-	-
Total Wt:	93	102	104.5	107.5	113.5	112.5	125	123	122.5	126.5	129	133.5	134	122	123	125	129	130	129	118	96	74	73	71	71	73	71	69	58	56	55	56	57	58				
Average:	9.3	10.2	10.4	10.7	11.3	11.2	12.5	12.3	12.2	12.6	12.9	13.3	13.4	13.5	13.7	13.8	14.3	14.4	14.3	13.7	13.9	14.8	14.6	14.2	14.2	14.6	14.2	13.8	14.5	14	13.7	14	14.2	14.5				
F 10 <sup>-3</sup>	1	-	-	-	-	-	-	-	-	-	-	-	-	-	-	-	-	-	-	-	-	-	-	-	-	-	-	-	-	-	-	-	-	-	-	-	-	
	2	-	-	-	-	-	-	-	-	-	-	-	-	-	-	-	-	-	-	-	-	-	-	-	-	-	-	-	-	-	-	-	-	-	-	-	-	
	3	-	-	-	-	-	-	-	-	-	-	-	-	-	-	-	-	-	-	-	-	-	-	-	-	-	-	-	-	-	-	-	-	-	-	-	-	-
	4	-	-	-	-	-	-	-	-	-	-	-	-	-	-	-	-	-	-	-	-	-	-	-	-	-	-	-	-	-	-	-	-	-	-	-	-	-
	5	-	-	-	-	-	-	-	-	-	-	-	-	-	-	-	-	-	-	-	-	-	-	-	-	-	-	-	-	-	-	-	-	-	-	-	-	-
	6	-	-	-	-	-	-	-	-	-	-	-	-	-	-	-	-	-	-	-	-	-	-	-	-	-	-	-	-	-	-	-	-	-	-	-	-	-
	7	-	-	-	-	-	-	-	-	-	-	-	-	-	-	-	-	-	-	-	-	-	-	-	-	-	-	-	-	-	-	-	-	-	-	-	-	-
	8	-	-	-	-	-	-	-	-	-	-	-	-	-	-	-	-	-	-	-	-	-	-	-	-	-	-	-	-	-	-	-	-	-	-	-	-	-
	9	-	-	-	-	-	-	-	-	-	-	-	-	-	-	-	-	-	-	-	-	-	-	-	-	-	-	-	-	-	-	-	-	-	-	-	-	-
	10	-	-	-	-	-	-	-	-	-	-	-	-	-	-	-	-	-	-	-	-	-	-	-	-	-	-	-	-	-	-	-	-	-	-	-	-	-
Total Wt:	93.5	100	102.5	104	107	112	120	117	115.5	116	109	118	116	106	106	106	94	86.5	77	77	64	64	65.5	65	51	62	50	38	39	24	23	23	24	24				
Ar:	9.3	10	10.2	10.4	10.7	11.2	12	11.7	11.55	11.6	10.9	11.8	11.6	11.7	11.7	11.7	11.7	12.3	12.8	12.8	12.3	12.8	13.1	13	12.7	13	12.5	12.6	13	12	11.5	11.5	12	12				
SEPT: 15	16	17	18	19	20	21	22	23	24	25	26	27	28	29	30	1	2	3	4	5	6	7	8	9	10	11	12	13	14	15	16	17	18	19	20	21	22	
Ar, 10 <sup>-3</sup>									12.2	12.4	12.4	12.6	12.8	12.9	13.1	13.2	13.5	13.4	13.2	13.2	13.3	13.6	13.6	13.7	13.1	13.5	13.2	13.1	13.9	13.4	13.2	13.3	13.8	14.1				

D 10/29  
Dissect 10/29

Dissect 10/29

P D



**J**  
10-3

	1	2	3	4	5	6	7	8	9	10	11	12	13	14	15	16	17	18	19	20	21	22	
1	-	-	-	-	-	-	-	-	-	-	-	-	-	-	-	-	-	-	-	-	-	-	-
2	-	-	-	-	-	-	-	-	-	-	-	-	-	-	-	-	-	-	-	-	-	-	-
3	-	-	-	-	-	-	-	-	-	-	-	-	-	-	-	-	-	-	-	-	-	-	-
4	-	-	-	-	-	-	-	-	-	-	-	-	-	-	-	-	-	-	-	-	-	-	-
5	-	-	-	-	-	-	-	-	-	-	-	-	-	-	-	-	-	-	-	-	-	-	-
6	-	-	-	-	-	-	-	-	-	-	-	-	-	-	-	-	-	-	-	-	-	-	-
7	-	-	-	-	-	-	-	-	-	-	-	-	-	-	-	-	-	-	-	-	-	-	-
8	-	-	-	-	-	-	-	-	-	-	-	-	-	-	-	-	-	-	-	-	-	-	-
9	-	-	-	-	-	-	-	-	-	-	-	-	-	-	-	-	-	-	-	-	-	-	-
10	-	-	-	-	-	-	-	-	-	-	-	-	-	-	-	-	-	-	-	-	-	-	-
Wt.	124	132	138	140.5	149	158.5	165	166	150	144	117	95	96	97	84	82	83	84	85	78	74		
Ar.	12.4	13.2	13.8	14	14.5	15.8	16.5	16.6	16.6	16.5	16.7	19	19.1	19.4	21	21	21.5	22	22				

**K**  
10-3

	1	2	3	4	5	6	7	8	9	10	11	12	13	14	15	16	17	18	19	20	21	22	
1	-	-	-	-	-	-	-	-	-	-	-	-	-	-	-	-	-	-	-	-	-	-	-
2	-	-	-	-	-	-	-	-	-	-	-	-	-	-	-	-	-	-	-	-	-	-	-
3	-	-	-	-	-	-	-	-	-	-	-	-	-	-	-	-	-	-	-	-	-	-	-
4	-	-	-	-	-	-	-	-	-	-	-	-	-	-	-	-	-	-	-	-	-	-	-
5	-	-	-	-	-	-	-	-	-	-	-	-	-	-	-	-	-	-	-	-	-	-	-
6	-	-	-	-	-	-	-	-	-	-	-	-	-	-	-	-	-	-	-	-	-	-	-
7	-	-	-	-	-	-	-	-	-	-	-	-	-	-	-	-	-	-	-	-	-	-	-
8	-	-	-	-	-	-	-	-	-	-	-	-	-	-	-	-	-	-	-	-	-	-	-
9	-	-	-	-	-	-	-	-	-	-	-	-	-	-	-	-	-	-	-	-	-	-	-
10	-	-	-	-	-	-	-	-	-	-	-	-	-	-	-	-	-	-	-	-	-	-	-
Wt.	125	132	140	137	151.5	156	146	146	124	123	108	108	108	95	95	93	78	74	69	63	61		
Ar.	12.5	13.2	14	13.7	15.1	15.6	16.2	16.2	17.7	17.5	18	18	18	19	19	18.6	19.5	18.5	19.3				

**L**  
10-3

	1	2	3	4	5	6	7	8	9	10	11	12	13	14	15	16	17	18	19	20	21	22	
1	-	-	-	-	-	-	-	-	-	-	-	-	-	-	-	-	-	-	-	-	-	-	-
2	-	-	-	-	-	-	-	-	-	-	-	-	-	-	-	-	-	-	-	-	-	-	-
3	-	-	-	-	-	-	-	-	-	-	-	-	-	-	-	-	-	-	-	-	-	-	-
4	-	-	-	-	-	-	-	-	-	-	-	-	-	-	-	-	-	-	-	-	-	-	-
5	-	-	-	-	-	-	-	-	-	-	-	-	-	-	-	-	-	-	-	-	-	-	-
6	-	-	-	-	-	-	-	-	-	-	-	-	-	-	-	-	-	-	-	-	-	-	-
7	-	-	-	-	-	-	-	-	-	-	-	-	-	-	-	-	-	-	-	-	-	-	-
8	-	-	-	-	-	-	-	-	-	-	-	-	-	-	-	-	-	-	-	-	-	-	-
9	-	-	-	-	-	-	-	-	-	-	-	-	-	-	-	-	-	-	-	-	-	-	-
10	-	-	-	-	-	-	-	-	-	-	-	-	-	-	-	-	-	-	-	-	-	-	-
11	-	-	-	-	-	-	-	-	-	-	-	-	-	-	-	-	-	-	-	-	-	-	-
Wt.	137	150.5	158	162	168.5	153	145.5	122	129	126	112	115	117	116	117	98	83	84	87	87	87		
Ar.	12.4	13.6	14.3	14.7	15.3	15.3	16.1	17.4	18.2	18.0	18.6	18.1	19.5	19.3	18.1	19.8	20.7	21	21.7				
al Ar.	12.4	13.3																					

EXT. 22 23 24 25 26 27 28 29 30 1 + 2 3 3 4 4 5 5 6 6 7 7 8 8 9 9 11 October  
 Ar. 13.2 14.0 14.1 15.1 15.5 16.2 16.7 17.5 17.3 17.7 18.7 18.8 19.2 19.3 19.8 20.5 20.7 21.3

19 20 21 22 23 24 25 26 27 28 29 30

8/10

ms	pp	D									
-	pp	D									
-	pp	D									
78	74	384	48	49	495	48	47				
19.5	18.5	19.2	24	24.5	24.5	24	23.5				

} only 1 found 10/29  
discard

9/10

	pp	D								
-	pp	D								
-	pp	D								
7	48	59	37.8	20	21	22	23	22		
19.3	19.5	18.9	20	21	22	23	22			

- Discard 10/29

9/11

		pp	D							
-	-	pp	D							
-	-	pp	D							
87	87	88	86	90	52	51	50			
21.7	21.7	22	23	23.5	26	25.5	25			

} Discard 10/29

11 12 13 14 15 16 17 18 19 20 21 22  
20 14.9 20 22.3 23 24.1 24.1 23.5

# PLASMODIUM INTRAPERITONEAL IN MICE III =

Effect of intraperitoneal administration of Plasmodium on subsequent  
Reaction to VIRUS

Weight

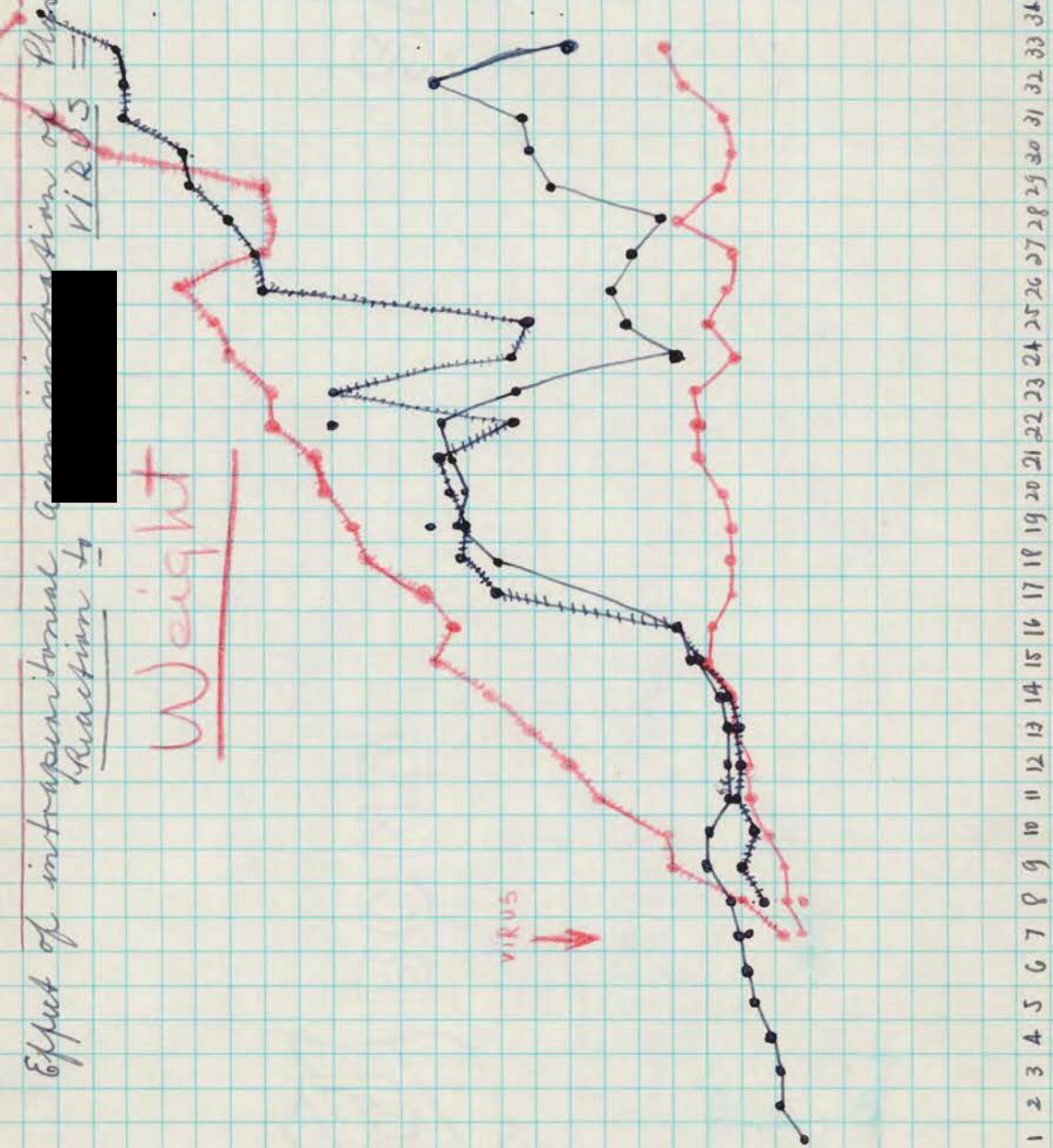
VIRUS →

24.  
23.  
22.  
21.  
20.  
19.  
18.  
17.  
16.  
15.  
14.  
13.  
12.  
11.  
10.

1 2 3 4 5 6 7 8 9 10 11 12 13 14 15 16 17 18 19 20 21 22 23 24 25 26 27 28 29 30 31 32 33 34 35  
 SEPTEMBER 5 16 17 18 19 20 21 22 23 24 25 26 27 28 29 30 1 2 3 4 5 6 7 8 9 10 11 12 13 14 15 16 17 18 19 20

10<sup>-2</sup> (PLASMODIUM)  
 10<sup>-2</sup> (NO DRUG)  
 10<sup>-3</sup> (PLASMODIUM)  
 10<sup>-3</sup> (NO DRUG)

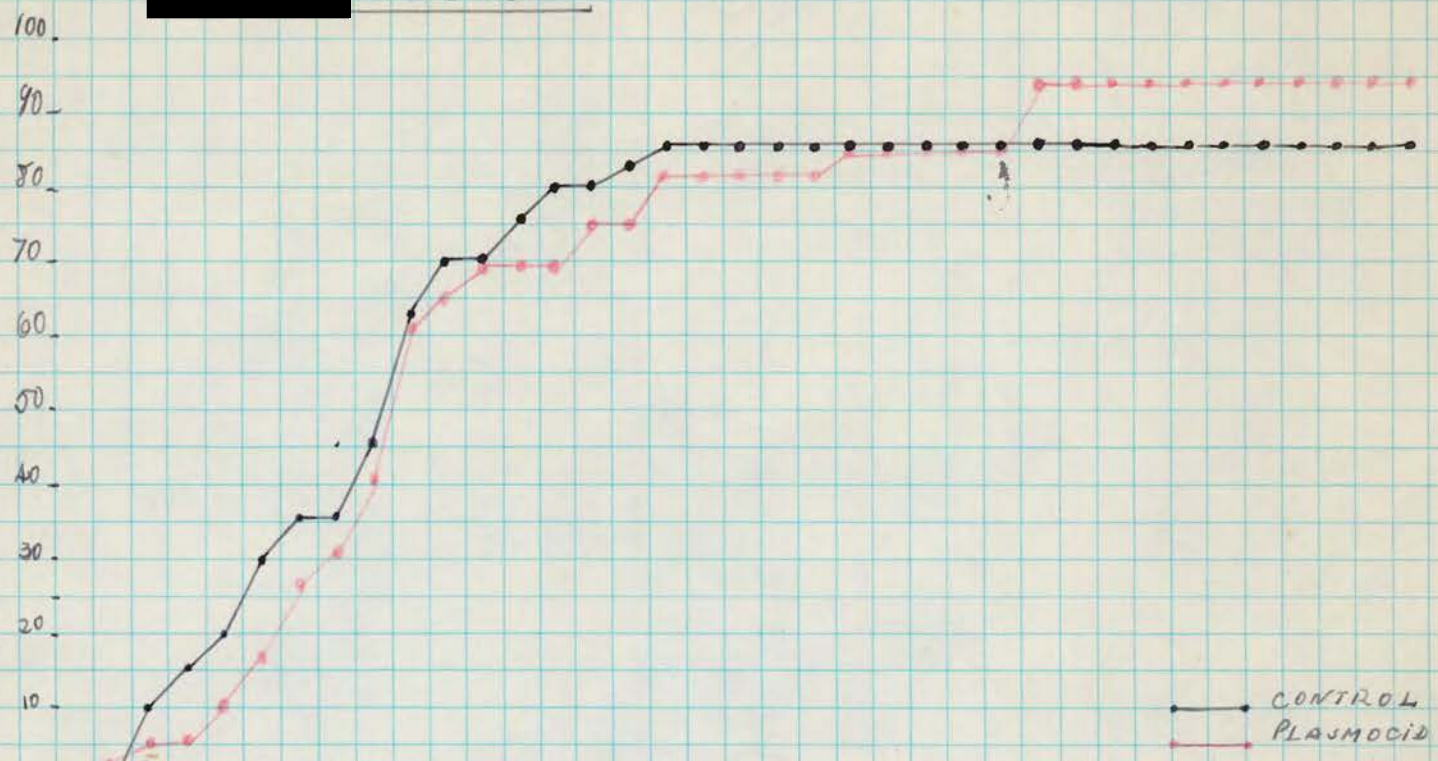
DRUG  
 DRUG



PLASMOCID INTRAPERITONEALLY IN MICE

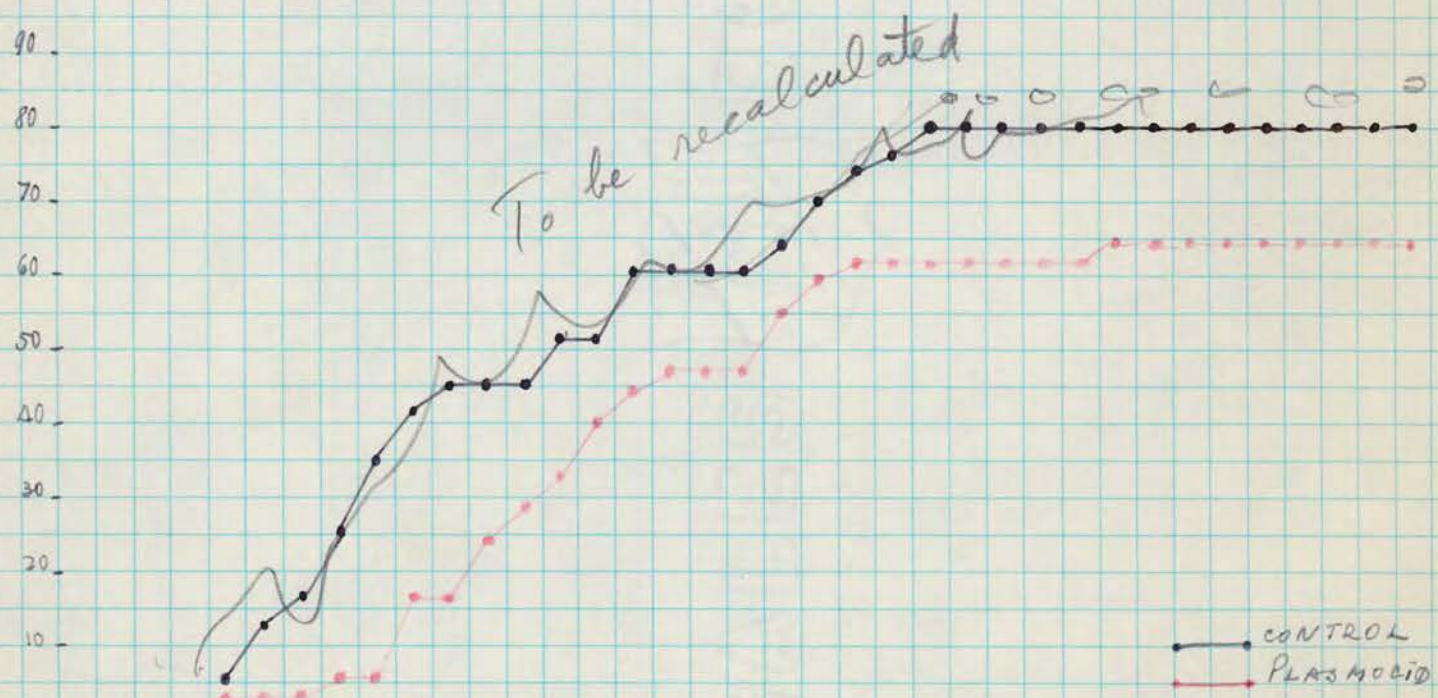
III  
September 22

VIRUS 10<sup>-2</sup>



5/1/49: 1 2 3 4 5 6 7 8 9 10 11 12 13 14 15 16 17 18 19 20 21 22 23 24 25 26 27 28 29 30 31 32 33 34 35

VIRUS 10<sup>-3</sup>



1 2 3 4 5 6 7 8 9 10 11 12 13 14 15 16 17 18 19 20 21 22 23 24 25 26 27 28 29 30 31 32 33 34 35