

DIET
MICE
PLAIN
OLD
VI

21 300 Gm ^{leaf} | ^{leaf} _{leaf}
~~6300~~

Plasmocid Experiment in mice

12/17/48

Purpose - To determine by repetition, the effect of Plasmocid on pathogenicity of Lansing Poliomyelitis virus in mice - drug in the diet.

Variation from previous test.

a) More drug: 250 mg base in 1,000 GM diet.

Reason: This amount produce marked weight loss in albino rat.

b) Older mice: \bar{a} 20 GM

Reason: To avoid the interference of the weight increase (because the growth) on the estimation of the weight loss.

MICE USED - Maxfield albino, 20 GM at time of delivery on 12/16/48. - 90 mice.

DRUG - DIET 250 mg. base (= 312 mg. Drug) of Plasmocid, mixed with 1,000 GM. powdered Purina Laboratory Chow) and thoroughly shaken in closed glass jar.

VIRUS CHALLENGE - Lansing Virus (Pool).

GROUPS OF ANIMALS

GROUP I - 30 mice: drug given 7 days before the inoculation of the virus and for 10 days after that.

BOXES: A, B, C.

GROUP II - 30 mice: drug given within the same period of time than for GROUP I, but no virus

WEIGHT CONTROL

BOXES: D, E, F.

GROUP III - 30 mice: NO DRUG - ONLY VIRUS

VIRUS CONTROL

BOXES: G, H, I.

Note: The animals of each box (10 mice on each one) should be weighed together, daily.

DEC. 24 - Mouse No. 1 - BX "B": Amputation right hind
leg. Convulsions: 5 minutes after prostrated.
~~Dead before inoculation.~~
Mouse No. 2 - BX C. Cold fur as in back.
Inflammatory?
Congenital?
Euporia?

Mouse 10 - BX A -

JANUARY -

~~13 14 15 16 17 18 19 20 21 22 23 24 25 26 27 28 29 30 31~~

SU NEXT PAGE
GROUP I (2)

A
24

PLASMOCID GROUP
 EXP. I IN MICE, 12/17/48
 I: Phosmoxid + Virus (E)

Box A
 1 2 3 4 5 6 7 8 9 10
 24 24 24 24 24 24 24 24 24 24
 240 240 240 240 240 240 240 240 240 240
 WT. 240
 Av. 24

Box B
 1 2 3 4 5 6 7 8 9 10
 100
 WT. 100
 Av. 10

Box C
 1 2 3 4 5 6 7 8 9 10
 24 24 24 24 24 24 24 24 24 24
 240 240 240 240 240 240 240 240 240 240
 WT. 240
 Av. 24

AT. 24 24 24 24 24 24 24 24 24 24
 T. Av. 240 240 240 240 240 240 240 240 240 240
 D + P. 240 240 240 240 240 240 240 240 240 240
 % 96.2 96.2 96.2 100.
 Av. 96.2

100% →

PLASMOCID GROUP

DECEMBER 24 -

Mouse 4 Box D
Swelling on right eye -
Tetramatax. Swollen left hind leg.

Mouse 5 Box D
Swollen both hind legs. -

JANUARY 4/49 - Box D, mouse 7. Weak - falling off
edge, weakness more marked
on lowers. -

" 5 - Box D, mouse 8 - somewhat weak,
lack hair on his back

" 8 - Mouse 9, Box D, bit on back.

" 10 - Mouse 9 - Box D, D - Bited on back.
Not legs swollen.

" 18 AM. Mouse 10 Box D (the last
in that box, passed to
Box E. (+Back yellow)

JANUARY 13 14 15 16 17 18 19 20

GROUP II

PLASMOCID EXPY in mice (2) 12-17-48
ONLY DRUG

Box D
1
2
3
4
5
6
7
8
9
10

WT.	26	26	25.5	27	28
AT.	26	26	25.5	27	28

1/18/49 - this mouse, 10 of Box D, passed to Box E. -

Box E
1
2
3
4
5
6
7
8
9
10

WT.	205	204	208	209	209	233
AT.	227	226	231	232	232	233

On 1/18/49 this mice was inoculated with 20 controls - see Exp. VI, 1/18/49. -

Box F
1
2
3
4
5
6
7
8
9
10

WT.	202	207	211	218	218	221
AT.	224	23	234	238	238	245
T. AVERAGE	227	23	235	238	239	239

1/18/49 - Mouse 10, Box D, passed to
Box E, back yellow. -

n

Box E passed to be Box A, (group I)
Plasmoid exp. VI. -

Box F passed to be Box B (group II)
Plasmoid exp. VI. -

DECEMBER 24 - Mouse 2, Box G -
Not left hind leg - Amputation?
Congenital?

27 - Since today, the food powdered,
in dishes as per groups I and II. -

JANUARY 17 - Mouse 9 - Box I - Prolap -
to 1st grade on medium,
red mucosa. -

PLASMOCID IN GROUP

MICE - EXP. V of IN - ONLY VIRUS

12/17/48 CONTROL

VAN 1 13 14 15 16 17 18 19 20 21
20 21 22 23 24 25 26 27 28

Box G

1
2
3
4
5
6
7
8
9
10

1
2
3
4 7D
5
6
7
8
9
10

Disc. JAN. 21-'48

74 74 75 75 76 76 77 77
24.6 24.6 25 25 25.3 25.3 25.6 25.6

Box I

1
2
3
4 7D
5
6
7
8 PP PP PP D
9 P D
10 PP D

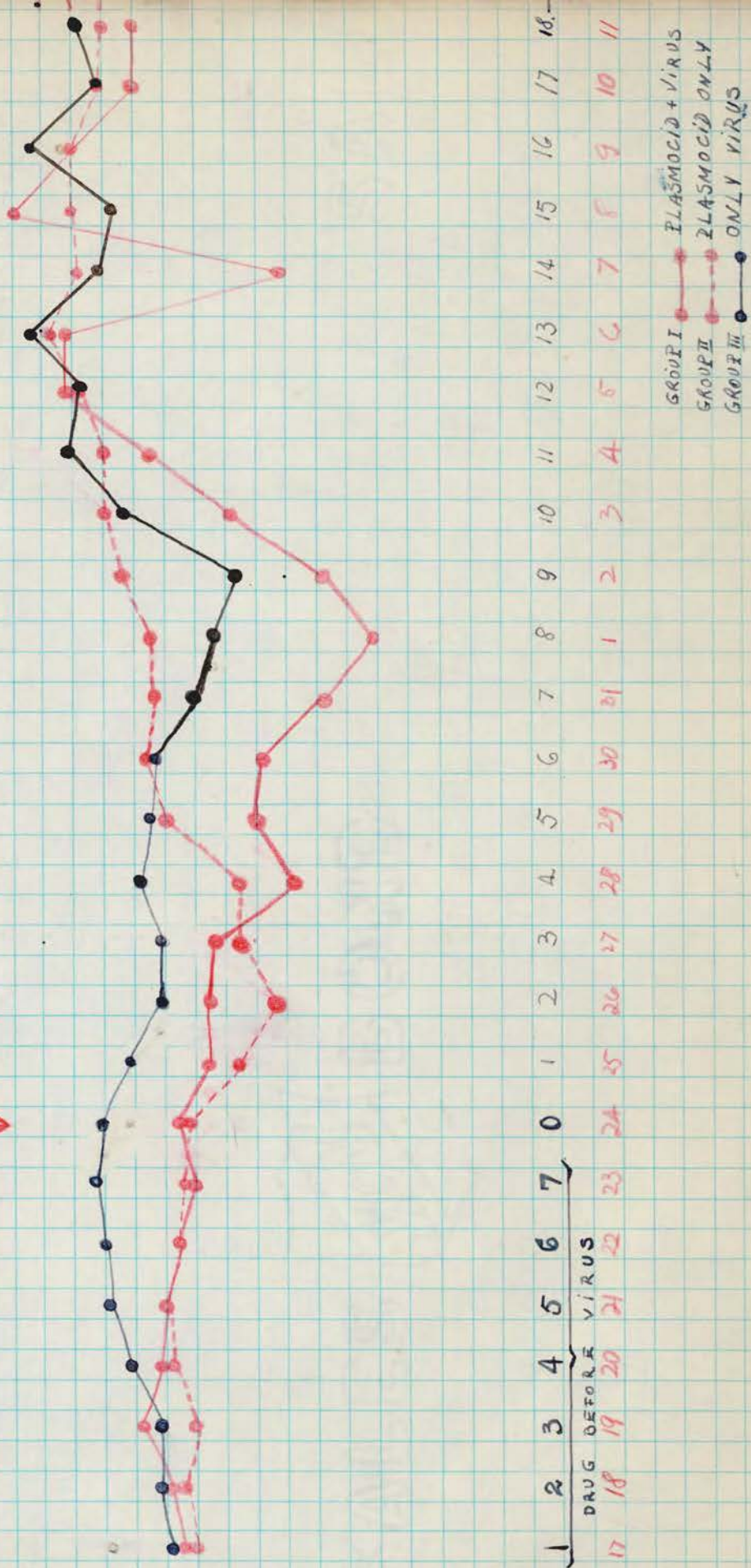
WT. 72 71 73 54 54 52 23 22
Ar. 24. 28.6 24.3 27 27 26 23 22
Total Ar. 24.3 24.1 24.6 25.8 26 25.6 25 24.7
P+D 23.1 23.1 23.1 23.1 23.1 23.1 23.1 23.1
% 79.3 79.3 79.3 79.3 79.3 82.7 84.3 89.6

PLASMODIUM IN MICE - EXP V of: 12/17/48

PLASMODIUM:

28.
27.
26.
25.
24.
23.
22.
21.
20.
19.
18.
17.

VIRUS (To I and III)
↓

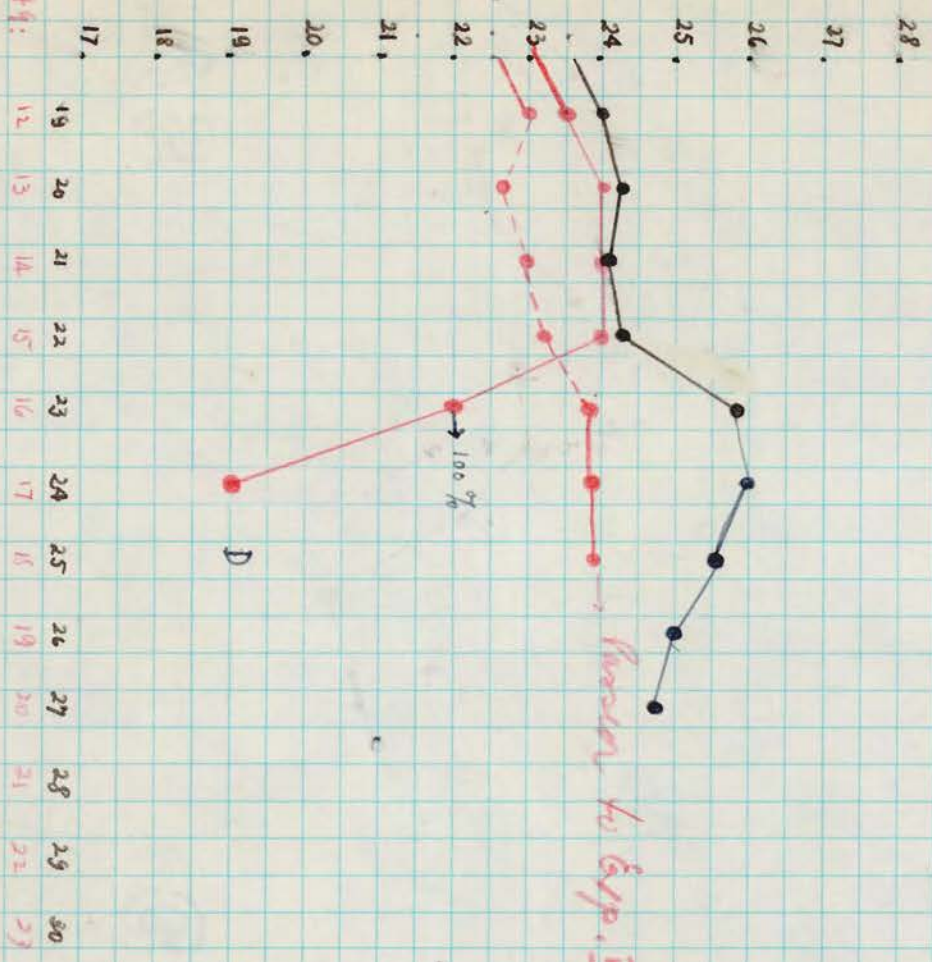


DRUG BEFORE VIRUS

GROUP I — PLASMODIUM + VIRUS
 GROUP II - - - PLASMODIUM ONLY
 GROUP III . . . ONLY VIRUS

OVER

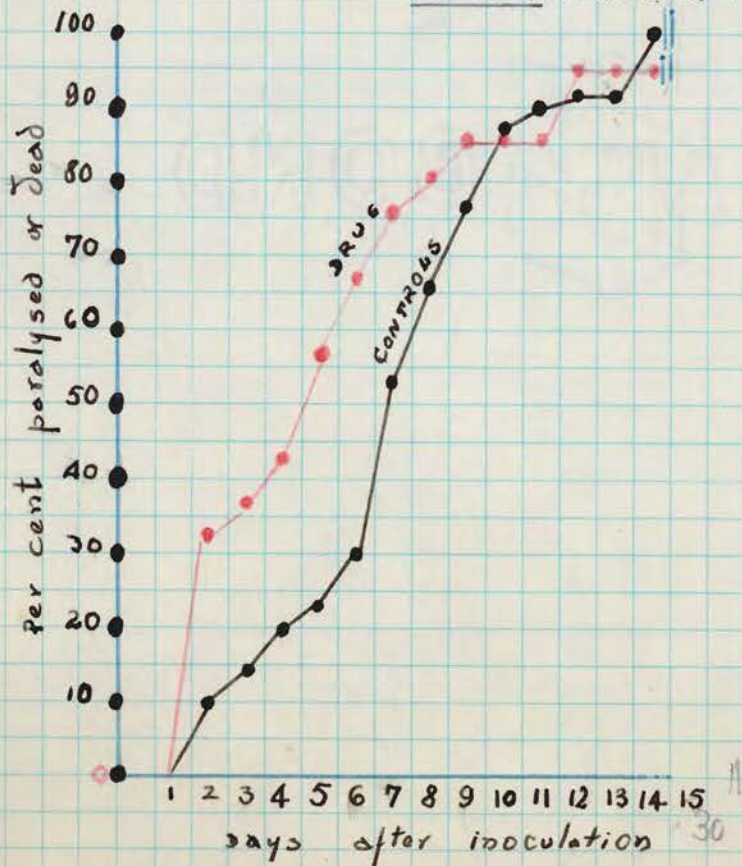
DECEMBER



D = 100 per cent dead...

EFFECT OF PLASMOCID IN DIET OF MICE ON SUSCEPTIBILITY TO [REDACTED] VIRUS

EXPERIMENT I: 132 mg base/kilo DIET
 MICE: 10 GM at start
 INOCULUM: @ 50 D₅₀ in 0.03 i.c.



EXPERIMENT II: 250 mg base/kilo DIET
 MICE: 20 GM at start
 INOCULUM: @ 50 D₅₀ i.c.

