

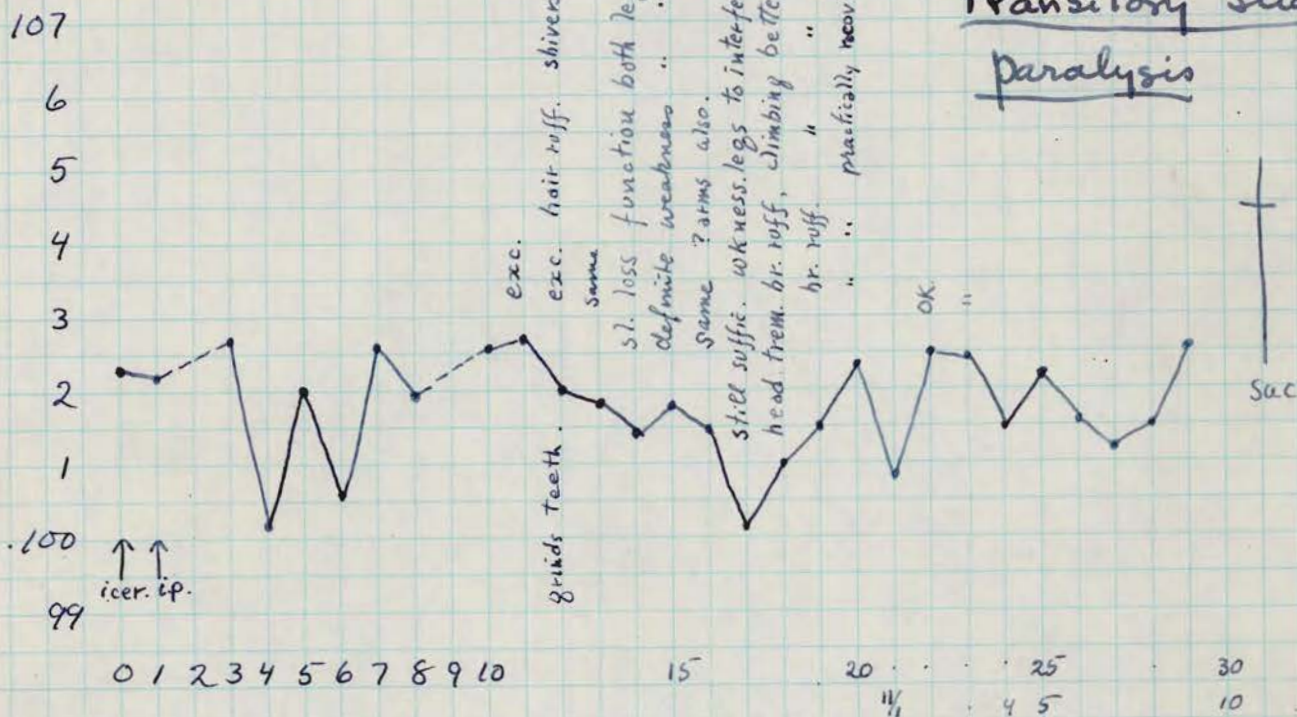
10-11-40



Motor Cortex

4.96m - 49cc. distilled water, no sand, no centrif. filtered.

Rh 218 10-11 2cc i.cer. 10-12 44cc. i.p.



Transitory slight paralysis

10-25 partial paralysis both legs (RW.)

Hold hel. comp. improvem.

10-31 practically recovered.

100 any time - 30th

11-12 autopsy no tbc. present in 80% sections CNS neg grossly. glycerin " cord 6, medulla, thalamus.

Microscopic - Polio

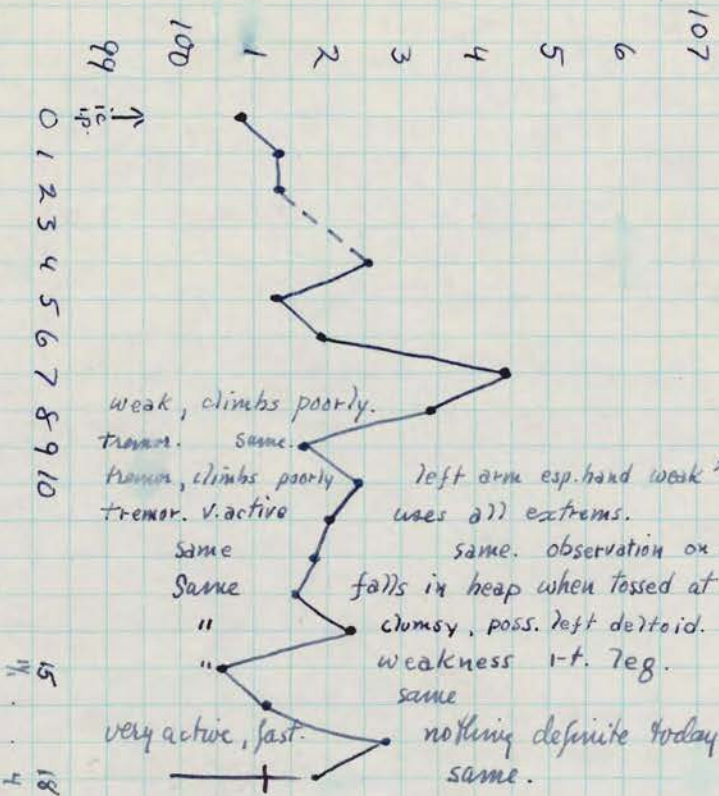
Hypothalamus at optic chiasma - infiltr. of choroid plexus + in globus pallidus

Medulla - particularly heavy infiltration in region of n. cuneatus on one side

Spinal Cord - Cuffing, outfall of cells, cell. infiltration and root reactions. Remaining nerve cells appear normal

Mac. Plesius 240

2 cc i.c.c. 2 cc i.p.



10-25 (Stuense for left arm, right leg weakness - RW)

* 10-27 when tremor of wooden bar, grabs some boards but left immediately slips, & none remains hanging by right arm.
 10-28 RW. Thinks he doesn't use left hand as much as right i.e. little supra.
 " Can't put over finger on definite paralysis."
 10-29 hangs off. By left arm alone when tossed at wooden bar.

11-4 autopsy. no fte.
 present in 80 CNS: no mushrooming of cord sections cord L1 T1 e 2. medulla, thalamus: glycine "

Microscopic - typical poliomyelitis - lesions at all levels

8-21-40

PASSAGE - [redacted] - spinal cord

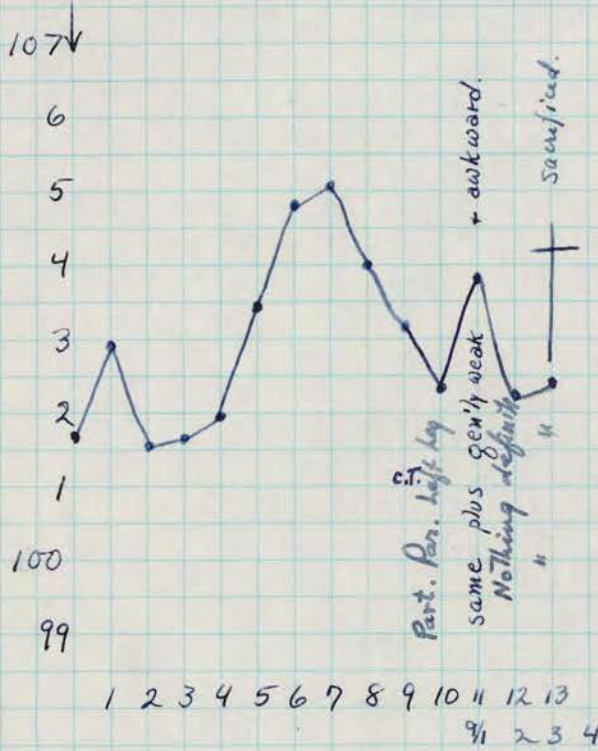
99

Rh. 123

Spinal cord; Lumbar dorsal & cervical cord 1.4cc
ground in 14cc saline
5 sand or centrifugation.

2cc I.C.
11cc I.P.

Rh 37



8-30

Cisternal tap

bloody fluid, obtained immediately after what seemed to be a clean puncture of the dura. i.e. no messing around.

9-3.

Sacrificed

Autopsy.

viscera

lung parasites

CNS

normal grossly.

sections

medulla, cord {lumb. 1
dors. 1
cerv. 1

glycerine

rest of cord + medulla.

Microscopic

Medulla - heavy cuffing and focal neuronophagia

Cervical and lumbar - necrosis and neuronophagia of about half the neurons (ant. horn) on one side + few on other side; cuffing

Thoracic - negative

M-U polio:

No. monkeys $\bar{5}$ paralysis

no. showing perivasc. lesions

2nd Cat. {
 IIII IIII IIII IIII IIII IIII
 36

IIII IIII IIII IIII IIII
 29

1st Cat. {
 IIII III
 8

II
 1

Human material + passage of human material

IIII IIII

II 6

IIII IIII

II 3

13

6

268
19

287

$$\frac{20}{x} = \frac{5.25}{5}$$

$$\begin{array}{r} 200 \overline{)105} \\ 105 \\ \hline 950 \\ 945 \\ \hline \end{array}$$

$$\begin{array}{r} 680 \overline{)105} \\ 630 \\ \hline 500 \\ 420 \\ \hline 80 \end{array}$$

Normal controls

1 monkey i.p. + i.N. found dead on 3rd day —
cuffing in thalamus.

1 monkey i.p. — dead 2nd day — CNS — neg.

M. V. monkeys — Not par — exam. list

11			
Infilt — 1			— 18
Neg —			— 13
			<hr/>

31 monkeys inoculated with M. V. virus

18

74
14
69
<hr/>
157

157 - Not par
 45 - Par
 8 - accidents
 2 - perit.
 9 - misc.

221 - Autopsies

$\frac{14}{157}$	$\frac{14}{157}$
------------------	------------------

	<u>Not par</u>	<u>NP</u>
Autopsy Material	- 157	- 14 14
Secretions	- 54	- 0
Stool (orig)	- 23	- 1
" (pass)	- 3	- 1
	<hr/>	<hr/>
	- 237	- 16 16