

NOTE TO USERS

This reproduction is the best copy available.

UMI[®]

UNIVERSITY OF CINCINNATI

July 14

19 78

I hereby recommend that the thesis prepared under my supervision by Jay G. Jacobs
entitled CHIMERA

be accepted as fulfilling this part of the requirements for the degree of Doctor of Musical Arts in Composition

Approved by:

Paul M. Palombo

Norman Hunter

Scott Gordon

CHIMERA

A dissertation submitted to the

Division of Graduate Studies
of the University of Cincinnati

in partial fulfillment of the
requirements for the degree of

DOCTOR OF MUSICAL ARTS in COMPOSITION

in the College-Conservatory of Music

1978

by

Jay G. Jacobs

B.M.E., Oberlin College, 1972

M.A., University of Missouri-Columbia, 1973

UMI Number: DP16711

INFORMATION TO USERS

The quality of this reproduction is dependent upon the quality of the copy submitted. Broken or indistinct print, colored or poor quality illustrations and photographs, print bleed-through, substandard margins, and improper alignment can adversely affect reproduction.

In the unlikely event that the author did not send a complete manuscript and there are missing pages, these will be noted. Also, if unauthorized copyright material had to be removed, a note will indicate the deletion.

UMI[®]

UMI Microform DP16711
Copyright 2009 by ProQuest LLC
All rights reserved. This microform edition is protected against
unauthorized copying under Title 17, United States Code.

ProQuest LLC
789 East Eisenhower Parkway
P.O. Box 1346
Ann Arbor, MI 48106-1346

ALL INFORMATION CONTAINED
HEREIN IS UNCLASSIFIED
DATE 12-15-2011 BY 60322
UCBAW/STP

CHIMERA

1978

Jay G. Jacobs

PROPERTY OF CONGRESS

INSTRUMENTATION

FLUTE

OBOE

ENGLISH HORN

E^b CLARINET

B^b CLARINET

BASS CLARINET

BASSOON

CONTRA-BASSOON

4 FRENCH HORNS

2 TRUMPETS

2 TROMBONES

TIMPANI (4 drums)

PERCUSSION (Tom Toms, Hi Tam Tam, Med. Tam Tam, Cymbal, Snare Drum, Bass Drum, Chinese Gong, Glockenspiel, Chimes, Xylophone)

PIANO, CELESTE

HARP

30 VIOLINS (divided equally into 2, 3, 4 sections)

12 VIOLAS

8 CELLOS

6 BASSES

Score is written in C — except for Contra-bassoon and Bass octave transpositions.

PERFORMANCE NOTES

PERCUSSION

Hi Tam Tam
Cymbal
Snare Drum

Medium Tam Tam
Bass Drum
Chinese Gong

Tom Toms

TIMPANI

MALLETS

Hard Soft Medium

(Also "Superball," Yarn, Cord, etc.)

MISC.

PAGE 1: Perform with continuous down bows.
Do NOT SYNCHRONIZE

PAGE 12: Behind the bridge.

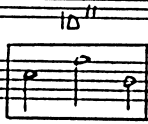
PAGE 13: Highest note possible.

Harmonics Performed:

S.T. Sul tasto

Accelerando

PAGE 32:



Perform notes in box in the given time span (seconds) with free duration for each pitch.

C.L.

Col legno

PAGE 4B:



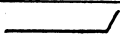
Number of conductor's cues per measure.

2

Performance cue.

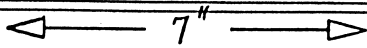


Perform all notes (within the box) very quickly — repeat as indicated.
• = Very fast ◦ = Slightly sustained.

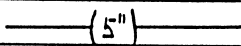


Cut-off

(Woodwind cues) Use other performers for entrance cues — see score and parts.



Durations between cues.



Partial durations.

PAGE 56: Pizz. e ARCO ad lib.

Perform in either mode — DO NOT SYNCHRONIZE. Feel free to switch between pizz and arco.

Jay Jacobs
1978

CHIMERA

$\downarrow = 60$

FLUTE

OBOE

ENGLISH HORN

CLARINETS
 Eb
 Bb

BASS

BASSOON

CONTRA-BASSOON

1. 2.
HORNS

3. 4.

TRUMPETS
 1.
 2.

TROMBONES
 1.
 2.

TIMPANI

PERCUSSION

KEYBOARD
 (Piano, Celeste)

HARP

N.B.

ffz

nnnn SEMPRE (Divisi)

VIOLENS (2)

VIOLAS (12)

CELLOS (8)

BASSES (6)

ffz

nnnn SEMPRE (d.)

nnnn SEMPRE

nnnn SEMPRE (d.)

32

FL

OB

E.H.

CLAR

CLAR $\begin{matrix} \text{E}^b \\ \text{B}^b \end{matrix}$

BASS

BSW

C-BSW

Musical score for woodwinds and strings (top section). Includes parts for Flute (FL), Oboe (OB), English Horn (E.H.), Clarinet in E-flat (CLAR E^b), Clarinet in B-flat (CLAR B^b), Bassoon (BASS), Bassoon in Soprano (BSW), and Bassoon in Contrabass (C-BSW). The score shows measures 32-34 with various dynamics and articulations.

HN

TPT

Trom

Musical score for brass instruments: Horn (HN), Trumpet (TPT), and Trombone (Trom). Shows measures 32-34 with dynamics like *f* and *mf*.

TRMP

PERC

XYLOPHONE

Musical score for percussion: Tom-tom (TRMP) and Percussion (PERC). Includes a section for Xylophone with dynamics *mfz* and *mf*.

PIANO

POCO MARCATO

crescendo

Musical score for piano. Includes the instruction *POCO MARCATO* and *crescendo*. Shows measures 32-34.

HARP

(E^bG[#]A^b)

Musical score for harp. Includes the chord notation $(E^b G^{\#} A^b)$. Shows measures 32-34.

VLN

VLN

VLA

Vc

DB

(Div.) Pizz

ARCO

(Unis) sfz

(Unis) sfz

Musical score for strings: Violin (VLN), Viola (VLA), Violoncello (Vc), and Double Bass (DB). Includes instructions like *(Div.) Pizz*, *ARCO*, and *(Unis) sfz*. Shows measures 32-34.

Poco Accel.

42

FL

DB

EH

CLAR

B♭

BASS

BSW

C-BSN

HN

TPT

TRON

TIMP

PERC

PIANO

CELESTE

PEAL

a niente

HP

Poco Accel.

VLA

VLA

VC

DB

SORDINI

SORDINI

SORDINI

SORDINI

SORDINI

♩ = 84

49

FL

OB

E#

E♭

B♭

BASS

BSW

C-BSW

AN

TPT

TROM

TIMP

PERC

PIANO

HP

mf poco MARCATO

♩ = 84

VLN

VLA

VC

DB

SENZA SORD.

SENZA SORD.

SENZA SORD.

SENZA SORD.

SENZA SORD.

54

FL.

OB

E.H.

CLAR. (E♭)

CLAR. (B♭)

BASS

BSN

C-BSN

pp

pp

pp

pp

HN.

TPT.

TROM.

TIMP

PERC

BASS DRUM

sfz

2.

fp

fp

PIANO

HARP

A* B C E G

mf

5

VLN

VLA

VC

DB

Pizz

mf

Pizz

mf

Pizz (Div.)

sfz

Pizz

sfz

STRINGENDO

♩ = 10

61

FL

OB

E.N.

CLAR [E^b B^b]

BASS

Bsn

C-Bsn

HN

TPT

Trom

Timp

PERC (BS. DR.)

VLN

VLA

VC

DB

mf 3

mp #

fp

f

sfz

ARCO

Col legno-batt.

Unis

3

♩ = 90

STRINGENDO

74

FL

OB

EH

CLAR

BASS

BSN

G-BSN

TPT

TRON

TIMP

PERC

MUTE OFF

sfz

VLN

VLA

VC

DB

ARCO

ARCO

Solo D

(1)

(2)

(1)

(1)

79

FL

OB

EH

E♭

CLARIN

B♭

BASS

BSN

C-BSN

HN

TPT

TRUM

TIMP

PERC

VLN

VLA

VL

VB

83

FL

OB

EH

CLAR

E♭

B♭

BASS

BSN

C-BSN

HN

TPT

Trom

TIMP

PERC

VLN

VLA

VC

DB

BB

FL

OB

E.H.

E^b

B^b

CLAR

BASS

B.S.N.

C-B.S.N.

H.N.

MUTE (ST.)

T.D.T.

TROM.

TIMP.

PERC.

HP.

V.L.N.

V.L.A.

V.C.

D.B.

95

FL
OB
E.H.
CLAR
E♭
B♭
BASS
PSN
C-BSN

HN
TPT
Trom

MUTE OFF

TIMP
PERC
HARP

e♭f#g♯

VLN
VLA
VC
DB

accelerando a tremolo

crescendo

crescendo

crescendo

crescendo

crescendo

f p v p v p accelerando a tremolo

POCO MENDO ♩ = 72 (POCO MARCATO)

Handwritten musical score for POCO MENDO, marked POCO MARCATO with a tempo of ♩ = 72. The score is arranged for a full orchestra and includes the following parts:

- FL (Flute)
- OB (Oboe)
- EH (English Horn)
- CLAR (Clarinet in Bb)
- BASS (Bassoon)
- BSN (Bassoon)
- C-BSN (Contrabassoon)
- HN (Horn)
- TPT (Trumpet)
- TADM (Trombone)
- TIMP (Timpani)
- PERC (Percussion)
- PIANO (Piano)
- HARP (Harp)
- VLN (Violin)
- VLA (Viola)
- VC (Violoncello)
- DB (Double Bass)

The score features complex rhythmic patterns, including triplets and sixteenth-note runs, with dynamic markings such as *sfz*, *pp*, and *ff*. A key signature change to E-flat major (E4 Ab) is indicated in the Harp part. The page number - 19 - is visible at the bottom.

RITENUTO ♩ = 60

106

FL

OB

E.H.

CLAR

BASS

BSN

C-BSN

HN

TRT

TROM

TIMP

PERC

RITENUTO ♩ = 60

PIANO

HARP

VLN

VLA

VC

DB

FL

OB

E.H.

CLARET

E^b

B^b

BASS

BSN

C-BSN

HIN

TPT

TROM

TIMP

PERC.

HARP

Tam Tam

ppp

pp

mp

(G#A#B)

VLN

Viola

VC

DB

S.T.

p

mf

FL

DB

EH

CLAR

E^b

B^b

BASS

BSX

C-BSX

3
4

2
4

HN

TPT

TROM

tr

tr

4

3

2

4

PERC

HP

3
4

2
4

VLN

VLA

VC

DB

p

mp

p

mp

p

mp

3
4

2
4

p

mp

p

mp

131

FL

OB

EH

CLAR

CLAR

Bb

Bass

BSN

C-BSN

#N

TPT

Trom

Timp

PERC

PIANO

VLN

VLA

VC

VB

FL
OB
EH
CLAR $\begin{cases} E^b \\ B^b \end{cases}$
BASS
BSA
C.BSA

HN
TRP
TRON

TIMP
PERC
PIANO

Tam Tam
Toms
Bass Dr.

p
fz
crescendo molto
sfz

VLN
VLA
VC
DB

(Poco STRING.)
MUTTI ARCO Div.

UNIS.
pp
f

2
4

DD

111

FL

OB

EH

CLAR

CLAR Bb

BASS

BASS

C-BASS

HN

TPT

TRON

TIMP

PERC

PIANO

HP

VW

VLA

VC

DB

172

FL

OB

EH

CLAR

E^b

B^b

BASS

BSW

C-BSW

GP.

Hr

TPT

Trom

Timp

PERC

Pi

HP

MOLTO CRESC.

GP.

V₁

V₂

V₃

V₄

V₅

DB

MOLTO CRESC.

ff

193

FL
OB
EH
CLAR Eb
CLAR Bb
BASS
BSN
C-BSN

HN
TPT
TRON

TIMP
PERC
PIANO

CHIMES (M) (I) L.V.

vel. sempre

f

VLN
VLA
VC
DB

197

FL

OB

EH

CLAR

CLAR Eb

CLAR Bb

BASS

BSN

C-BSN

HN

TPT

Trom

TIMP

Perc

Toms

f

p

mf

(TUTTI)

VLN

VLA

VC

DB

f

f

f

f

f

f

(TUTTI)

210

FL

OB

EH

CLAR

EB

Bb

BASS

BSW

C-BSW

HN

TPT

Trom

TIMP

PERC

PIANO

VLN

VLA

VC

DB

f *f* *b^b* *f* *b^b* *f*

SALD *3* *p* *mf* *CRASC.* *f* *MP*

216

FL

OB

EA

CLAR

BASS

BSN

G-BIN

HN

TPT

TROM

TIMP

TELL

PIANO

VLN

VLA

V

DB.

pp

mp

f

LEGATO

X4L.

TUTTI

C.L.

3

5

7

8

9

10

11

12

13

14

15

16

17

18

19

20

21

22

23

24

25

26

27

28

29

30

31

32

33

34

35

36

37

38

39

40

41

42

43

44

45

46

47

48

49

50

51

52

53

54

55

56

57

58

59

60

61

62

63

64

65

66

67

68

69

70

71

72

73

74

75

76

77

78

79

80

81

82

83

84

85

86

87

88

89

90

91

92

93

94

95

96

97

98

99

100

POCO MENDO $\text{♩} = 52$

222

FL

OB

EH

CLAR E^b

CLAR B^b

BASS

BSN

C-BSN

HN

TPT

TRON

TIMP

ERC

POCO MENDO $\text{♩} = 52$

VLN

VLA

VC

BASS CLAR. *pp*

C-BSN *pp*

HN

TRP

Trom

TIMP

PERC

SNARE DR.

PNO

HP

ped. a niente

C# Db

VLA

VK

DB

241

OB

EH

CLAR E^b

CLAR B^b

BASS

BSN

C-BSN

HN

TRPT

Trom

TIMP

PERC

YARN

BASS DRUM

SUPER

VLA

VC

DB

ARCO

(mp)

FL

OB

EA

CLAR
 Eb
 Bb

BASS

BSN

C-BWN

HN

TPT

TRom

Temp

PERC

PNO

HP

VLN

VLA

VC

DB

(TUTTI ARCO)

DIV.

♩ = 120 ALLEGRO

Handwritten musical score for a symphony orchestra. The score includes staves for Flute (FL), Oboe (OB), English Horn (EH), Clarinet in E-flat (CLAR Eb), Clarinet in B-flat (CLAR Bb), Bassoon (BASS), Bassoon in C (C-BASS), Horns (HN), Trumpets (TPT), Trombones (TRON), Timpani (TIMP), Percussion (PERC), Piano (PNO), Harp (HP), Violins (VLN), Viola (VLA), Violoncello (VC), and Double Bass (DB).

Key markings and annotations include:

- 254**: Measure number at the top left.
- mf (SEMPE)**: Dynamic marking for Horns and Trumpets.
- ST. MUTE**: Staccato marking for Horns.
- DIMINUENDO**: Large handwritten word across the Timpani and Percussion staves.
- SUPER**: Marking for Timpani and Percussion.
- TOMS SUPER**: Marking for Percussion.
- GHAD**: Marking for Harp.
- SIMILE**: Marking for Violins, Viola, and Violoncello.
- pp**: Pianissimo marking for Viola.
- (SUL C)**: Sul C marking for Viola.
- fz**: Forzando marking for Double Bass.
- sfz**: Sforzando marking at the bottom right.

The score features complex rhythmic patterns, including triplets and sixteenth-note runs, and dynamic changes throughout the piece.

263

FL

OB

EH

CLAR Eb

CLAR Bb

BASS

BSN

C-BSN

HN

POLO GLISSANDO

p

TIMP

PERC

sfz

PNO

sfz

HP

CRESCENDO

3

ff

VLN

SIMILE

3

ff

p

VLA

SIMILE

3

p

ff

p

VC

SIMILE

3

ff

p

DB

CRESCENDO

3

ff

HN

TPT

Trom

TimP

PERC

BASS DR.

XYLOPHONE

(GP) (GP)

PND

HP

VLN

VLA

VL

DB

2B5

FL

OB

EH

CLAR

E♭

B♭

BASS

BSN

C-BSN

1

6

-3°-

Poco MARCATO

HN

Trom

Timp

PERC

BASS DR.

p

f

3

5

6

mf

VLN

VLA

VC

DB

p

f

3

6

Handwritten musical score for a symphony orchestra. The score is written on multiple staves, with the following instruments labeled on the left side:

- FL (Flute)
- OB (Oboe)
- EH (English Horn)
- CLAR (Clarinet) - includes Eb, Bb, and Bs staves
- BSN (Bassoon)
- C-BSN (Contrabassoon)
- HN (Horn)
- TPT (Trumpet)
- TRON (Trombone)
- TIMP (Timpani)
- PERC (Percussion)
- PNO (Piano)
- HP (Harp)
- VLN (Violin) - includes VLA (Viola) and VK (Violoncello)
- VB (Violoncello)
- JB (Double Bass)

The score includes handwritten musical notation, including notes, rests, and dynamic markings such as *mf*. There are several boxed sections of music, and a double bar line is present in the upper right section. The notation is in a standard staff format with clefs and key signatures.

-(3")-

2

3

4

5"

5

-(1")-

Handwritten musical notation for a horn section, featuring notes for Eb, Bb, and other instruments. The notation includes a treble clef and various note values.

Main musical score for various instruments including FL, DB, EA, CLAR, BASS, BSN, C-BSN, HN, TPT, Trom, TIMP, PEAC, PNO, HP, YLW, YLA, VC, and DB. The score includes dynamic markings such as *f*, *mp*, and *p*, and performance instructions like *SOLD* and *RIZZ*. A box labeled '4' is present in the YLW part.

-(13")-

Handwritten musical score for a symphony orchestra. The score includes staves for Flute (FL), Oboe (OB), Clarinet in E-flat (CLAR Eb), Clarinet in B-flat (CLAR Bb), Bassoon (BSN), Contrabassoon (C-BSN), Horns (HN), Trumpets (TRT), Trombones (TROM), Timpani (TIMP), Percussion (PERC), Piano (PNO), Harp (HP), Violins (VLN), Viola (VLA), Violoncello (VCL), and Double Bass (DB).

Key features of the score include:

- Flute (FL):** Starts with a key signature change to one sharp (F#) and a dynamic marking of mf . The first staff contains a melodic line with notes: $f, a, b, e, b, e, b, e, a, b, a, a$.
- Oboe (OB):** Contains a melodic line with notes: $b, a, b, a, \sharp a, \sharp a$.
- Clarinet in E-flat (CLAR Eb):** Contains a melodic line with notes: $\sharp a, b, a, b, a, b, a$.
- Clarinet in B-flat (CLAR Bb):** Contains a melodic line with notes: $b, a, b, a, b, a, b, a, b, a, b, a$.
- Bassoon (BSN):** Contains a melodic line with notes: $b, a, b, a, \sharp a, \sharp a$.
- Contrabassoon (C-BSN):** Contains a melodic line with notes: $b, a, b, a, \sharp a, \sharp a$.
- Bass (BASS):** Features a bass line with notes: $\sharp a, b, a, b, a, b, a, b, a, b, a, b, a$. Includes a dynamic marking of f and a fermata over the final notes.
- Percussion (PERC):** A box containing the number "6" is positioned above the staff, with an upward-pointing arrow indicating a specific event.

$\text{♩} = 50$

Poco

ACCELERANDO

292

FL

DP

EH

CLAR
E^b
B^b

BASS

BSN

C-BSN

Detailed description: This system contains staves for Flute (FL), Dore (DP), English Horn (EH), Clarinet in E-flat (CLAR E^b), Clarinet in B-flat (CLAR B^b), Bass (BASS), Bassoon (BSN), and Contrabassoon (C-BSN). The music features melodic lines with slurs and dynamic markings of *p* (piano) and *pp* (pianissimo). The key signature has one flat, and the time signature is 2/2.

HN

TPT

TROM

Detailed description: This system contains staves for Horn (HN), Trumpet (TPT), and Trombone (TROM). The music includes melodic lines with slurs and dynamic markings of *p* (piano) and *pp* (pianissimo). There are also triplet markings (indicated by '3' over groups of notes) and some complex rhythmic patterns. The key signature has one flat, and the time signature is 2/2.

TIMP

PERC

Detailed description: This system contains staves for Timpani (TIMP) and Percussion (PERC). The timpani part has a melodic line with a dynamic marking of *p* (piano). The percussion part includes a snare drum (sn⁺) and a bass drum (BASS DR.) with a dynamic marking of *p* (piano).

PNO

Detailed description: This system contains the piano (PNO) staff, which is currently blank.

HP

Detailed description: This system contains the harp (HP) staff, which is currently blank.

$\text{♩} = 50$

Poco

ACCELERANDO

VLN

VLA

VC

DB

Detailed description: This system contains staves for Violin I (VLN), Violin II (VLA), Viola (VC), and Double Bass (DB). These staves are currently blank.

FL

DB

EH

CLAR. Eb

Bb

BASS

BSW

C-BSW

HN

TPT

TRON

TIMP

PELL

PNO

HP

VLN

VLA

VC

VB

FL

OB

EH

CLAR

CLAR Eb

CLAR Bb

BASS

BSW

C-BSN

HN

TPT

Trom

TIMP

PERC

PHO

HP

VLN

VLA

VC

DB

305

FL

DB

LN

CLAR

E♭

B♭

BASS

BSN

C-BSN

HN

TPT

TROM

TIMP

PERC

PNO

HP

VLN

VLA

VC

DB

mp

3

mp

3

mp

3

mp

313

OB

B^b

CLAR.

BASS

BSN

C-BSN

TIMP

PERC

PNO

(Can. Basses of 49)

49

ped.

VLN

VLA

VC

DB

332

OB

BS. CLAR.

BSN

C-BSN

HN 1.

TROM 2.

PERC

PNO

2 SOLI

2 SOLI

VLN

GLI ALTRI

2 SOLI

2 SOLI

VLA

GLI ALTRI

2 SOLI

2 SOLI

VC

GLI ALTRI

Solo

Solo

DB

GLI ALTRI

SORDINI

SORDINI

SORDINI

SORDINI

SORDINI

SORDINI

SORDINI

SORDINO

SORDINO

$(-^3)$ $\text{♩} = 84$ RITARD. $\text{♩} = 70$

3/4

FL

OB

EH

E♭

B♭

BASS

BSN

C-BSN

HN

TPT

TRDN

TIMP

PERC

CELESTE

HP

Solo L.

pp

ppp

mp

ppp

(VIBE)

(METAL Mallet)

p

RED.

L.V.

B♭

C♯

$(-^3)$ $\text{♩} = 84$ RITARD. $\text{♩} = 70$

VLN

VLA

VC

DB

34B

FL

OB

EH

COR

CLAR

BASS

BSN

C-BSN

HORN 1.

TIMP

PERC

CELESTE

HP

VLN

VLA

Violin

Viola

FL

OB

EH

CLAR $\left\{ \begin{array}{l} E^b \\ B^b \end{array} \right.$

BASS

BSN

C-BSN

TIMP

PERC

PPPP

PNO

HP

GLI ALTRI $\left\{ \begin{array}{l} VLN \\ VLA \\ VC \\ DB \end{array} \right.$

(Last desk)

GLI ALTRI $\left\{ \begin{array}{l} VLA \\ VC \\ DB \end{array} \right.$

(Last desk)

GLI ALTRI $\left\{ \begin{array}{l} VLA \\ VC \\ DB \end{array} \right.$

(Last desk)

GLI ALTRI $\left\{ \begin{array}{l} VLA \\ VC \\ DB \end{array} \right.$

(Last desk)

GLI ALTRI $\left\{ \begin{array}{l} VLA \\ VC \\ DB \end{array} \right.$

(Last desk)

366

FL

OB

EH

E♭

B♭

BASS

BON

C-BON

HN

TPT

TRON

TIMP

PERC

VLN

VLA

VC

DB

detaché

ff

detaché

ff

(Pizz)

f

RALLENTANDO - - - - -

$\text{♩} = 60$

329

HN

TRDM

TRMP

PERC

PNd

HP

YAN CHINESE GONG (Hi) *ppp*

pp

RALLENTANDO - - - - -

$\text{♩} = 60$

VLN

VLA

VC

DB

Solo

p

Poco Meno ♩ = 56

RITARD. ♩ = 52

396

FL

OB

B^b CLAR.

HN

TIMP

PERC

PNO

HP

Poco Meno ♩ = 56

RITARD. ♩ = 52

VLN

VLA

VL

DB

TUTTI

Div.

pp

RITENUTO ♩=48

(CALANDO)

Meno Mosso ♩=42

404

FL

OB

B♭ CLAR

TimP

PERC

PND

HR

TAM

pp

p

CELESTE mf

PED. (SEMPRE)

N.B.

C[♯]F[♯]G[♯]A[♯]

p

ppp

RITENUTO ♩=48

(CALANDO)

Meno Mosso ♩=42

Solo

pp

3 SOLI

p

3 SOLI

p

(2 PLAYS)

(2 PLAYS)

Solo p

Solo p

p

N.B. - IF POSSIBLE SUSTAIN PIANO PED. WHILE