

Pdli 1947.



Akron.

White; ♂; 13 yrs.

Onset: 8/24/47.

History: mother states that on 8/24/47 there was sudden onset of fever and general headache and pt. felt weak + tired all over. - On 8/25/47 - pt. said both legs hurt "all over". - (Previously the child has had vague headache + vague abdominal discomfort all thru the summer - for the past 2 months.) - - - No other symptoms.

Admission: T. 101° F.

Exam: Marked nuchal rigidity; poster-spinal with marked tenderness; moderate hamstring tenderness. There is questionable weakness of both sternomastoids vs. opposition. - Definite paresis of left leg; and a left foot drop. - Cremasteric reflexes not obtainable - nor is the left K.T. elicited.

C&F :- 8/26/ 

cells	lymphs	polys	globuli
154	95%	5%	+

Notes: 8/27. Temp. 101°. Spasm of neck: back and hamstring contrive. - weakness of left lower leg, and left foot drop are present. 98°

8/28. T. 100°. - Rather marked spasm of neck back + hamstrings contrive. - Has had splint for left foot drop. -

8/29. Temp. 98°. Less back + hamstring spasm. 100°

8/30 Temp. 98°. Still slight back + hamstring spasm

	<u>OPSwal-</u>	<u>Stool</u>
8/27	✓	✓ small ✓ formed.
8/28	✓	✓ brownish sm. volume.
8/29	✓	✓ formed.
8/30		

20  
NOV 19 1947

### A. Stools: -

Estimated Solids Present	12 gms
Liquid Present	30 c.c.
Distilled water Added	90 cc.

Blended for one minute low speed -

For Centrifugation	± 100 cc.
For storage	± 25 cc. (Box 'C')

First supernatant	=	70 c.c.
ETHER Added	=	14 c.c.

Untreated Sediment	=	30 cc. (for intranasal)
--------------------	---	-------------------------

11/21/47. - Final Amount of Treated Suspension = 59 cc.  
Cult. (Before Final Centrifugation) = ✓✓✓  
Cult. (After Final Centrifugation) = ✓✓✓

B. Pharyngeal Swab Material -

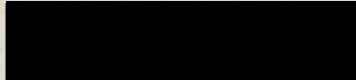
Fluid Expressed = 2.0 cc  
Distilled Water Added = 2.0 cc

4.0 cc  
Ether Added = 1.5 cc

11/21/47. After Removal Top Layer = 3.7 cc

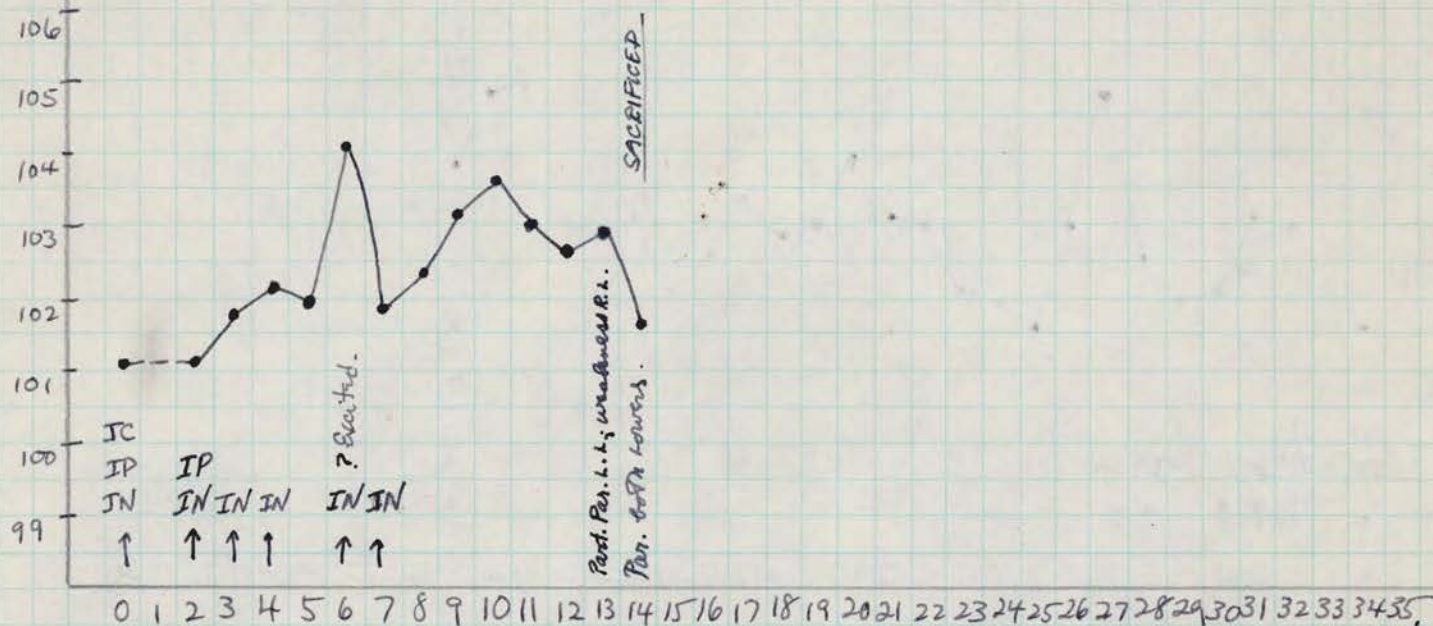
11/21/47. After Final Centrifugation = 3.5 cc  
Culture: ✓✓✓

NOV 22 1947



Treated pharyngeal swabs - IC. Cult: ✓✓  
 Treated stools - IP. ✓✓  
 Untreated stools - IN.

Rhesus # 11



11/22/47. Inoculated 1.5 cc. IC; 20 cc IP; and 1 cc IN per nostril.

11/24/47. The IP dose was 10.0 cc.

12/5/47. - AM. - Partial paralysis L.L; weakness R.L.

P.M. - Temp. 102.6; part. par. both lowers. (AES suggested waiting for temp. dropped. - West R. Macintosh)

12/6/47. Paralysis both lowers; upper, back and cranial nerves seem O.K. Sacrificed with chloroform; Autopsy: - no evidence of tuberculosis.

COLON CONTENTS: Frozen in large test-tube. (Storage box # 2)

POSTMORTEM: cord, brain; medulla, Thalamus (ZA)

TISSUE FOR VIRUS: Cord and medulla made up as 20% suspension in saline and frozen in 2 ampoules (B-2-4) Cult: ✓✓

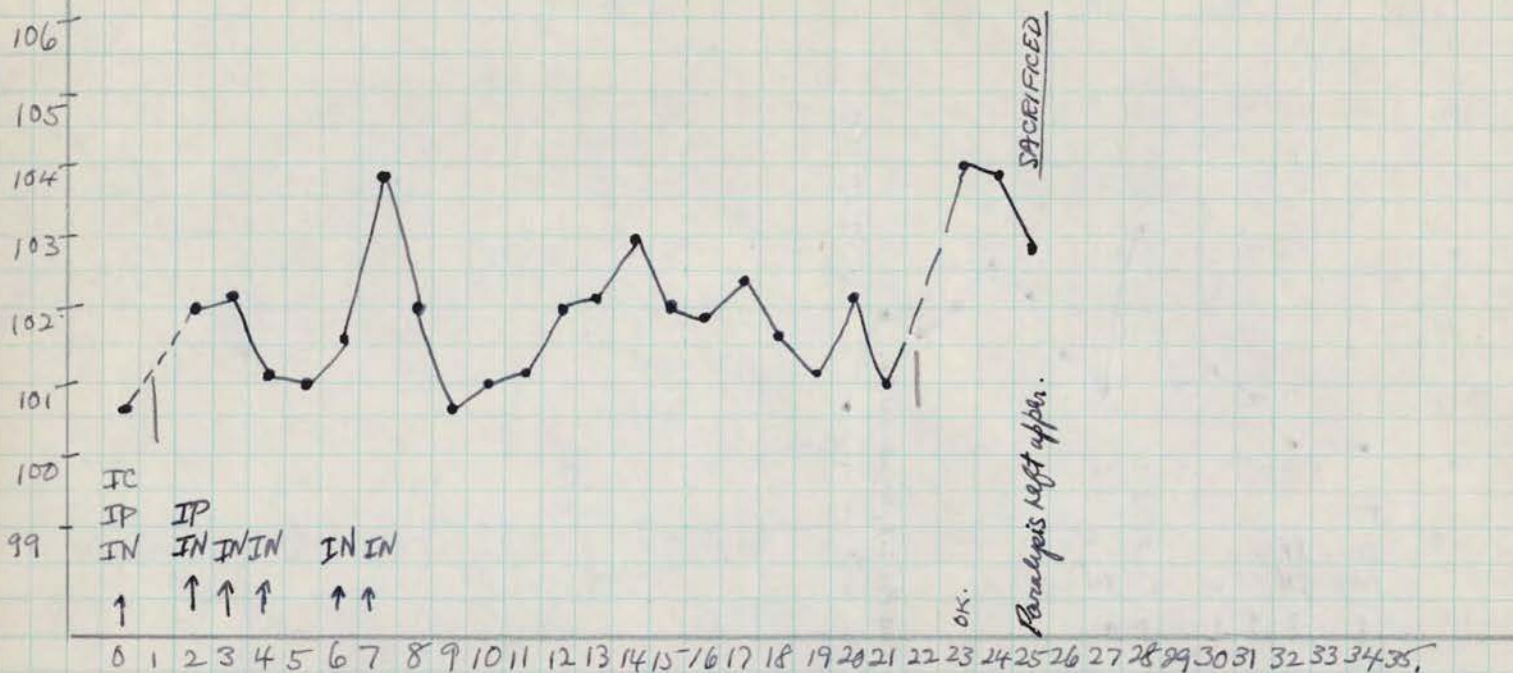
3-3-48. One amp of susp (now designated as #1) thawed and 2.0 cc removed for passage to Rhesus # 158 & Rh # 157. Remainder refrozen and stored (B-2-4)

Histology - Polio

NOV 22 1947

Phosust # 818 - splenectomized

Theated pharyngeal Swabs - IC.  
 treated stools - IP.  
 untreated stools - IN.



11/22/47. Inoculated 1.5 cc IC; 20 cc IP and 1 cc IN per nostril.

11/24/47. The IP dose was 10.0 c.c.

12/17/47. Flaccid paralysis left upper; otherwise OK. - Sacrificed with chloroform

Autopsy: - Gross evidence of pulmonary TB; no accessory spleens.

COLON CONTENTS: - frozen in histroid tube. (storage box #2)

HISTOPATHOLOGY: cord levels; medulla; Thalamus; olfactory bulbs (ZA)

TISSUE FOR VIRUS: cord and medulla frozen on dry ice until 12/19/47, then made up as 20% susp. in saline and frozen in a 20 cc amp. and a 10 cc ampoule (B-1-2), cord-medulla wt = 4.6 gms; saline = 18.4 cc. Cult: ✓✓

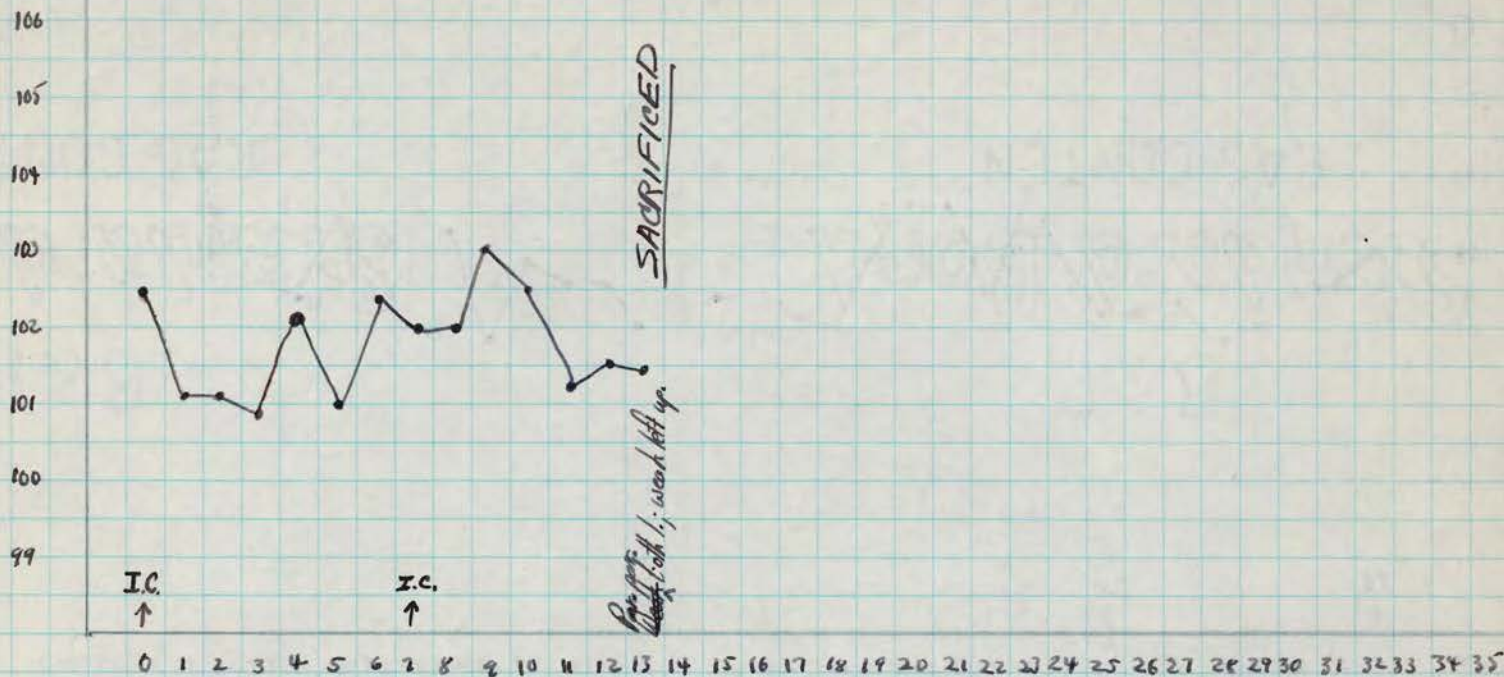
Histology - Polio

MAR

3 1948

Generation II

Rhesus # 157 (normal)



3-3-48 - Inoc. I.C. with 1.0 cc of 20% in [redacted] virus - Gen I.

3-10-48: Re-inoculated with 1.0 cc of 20% in saline, [redacted] virus - Gen I.

3-16-48: Weakness both lowers; weakness left upper (part. par. left upper) A.S.

Sacrificed: (chloroform - exsanguination) Autopsy: no gross lcs.

TISSUE FOR SECTION: Sections of cervical & lumbar cord (Z-A.)

TISSUE FOR VIRUS: Remainder of cord-medulla made into a 20% sus frozen in a Listeroid tube (B-2)

Culture: ✓✓✓

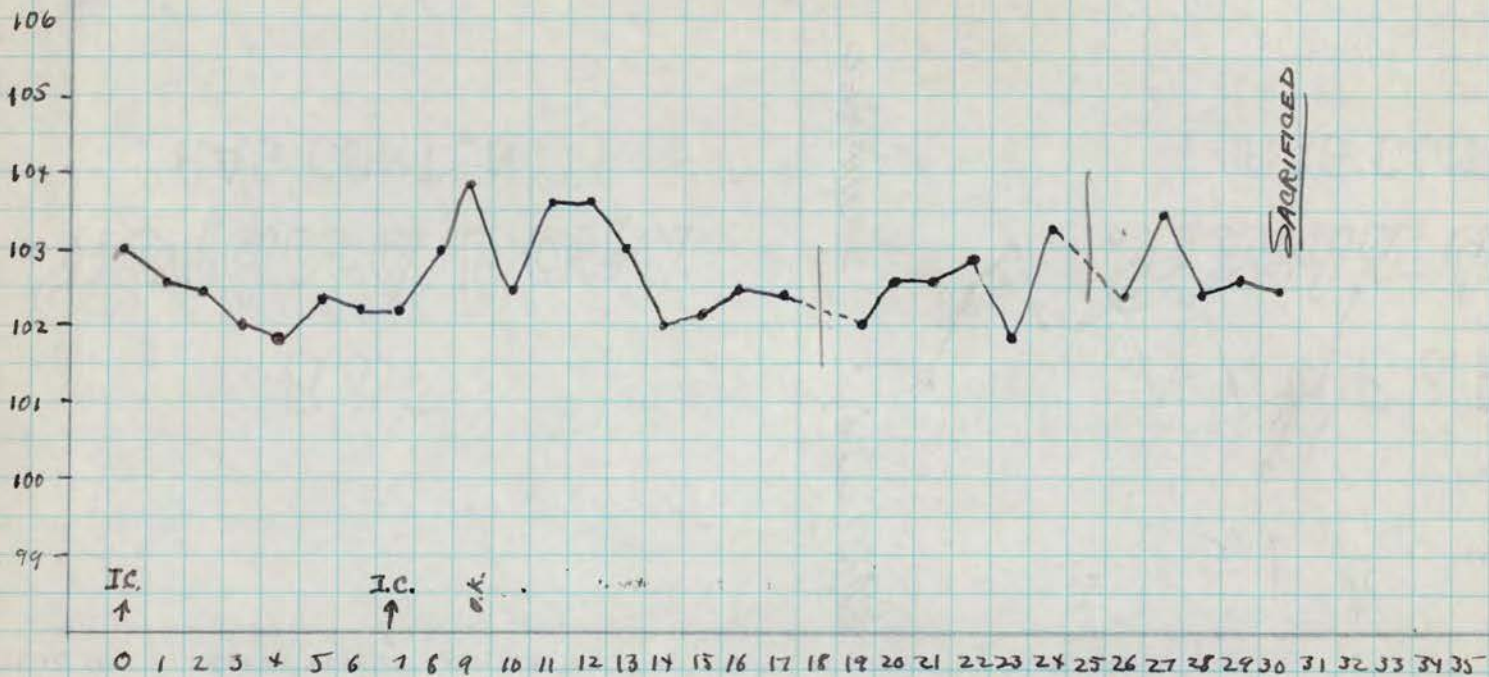
3-29-48: Cord-medulla thawed and made into a 20% suspension in (18cc.) sterile saline. Wt. of cord = 4.5 gms. #14 cc. frozen in 1-20cc amp. and 4-10cc amp and stored, (B-1-9)

Culture: ✓✓✓

MAR 3 1948

Generation II

Rhesus # 158 (normal)



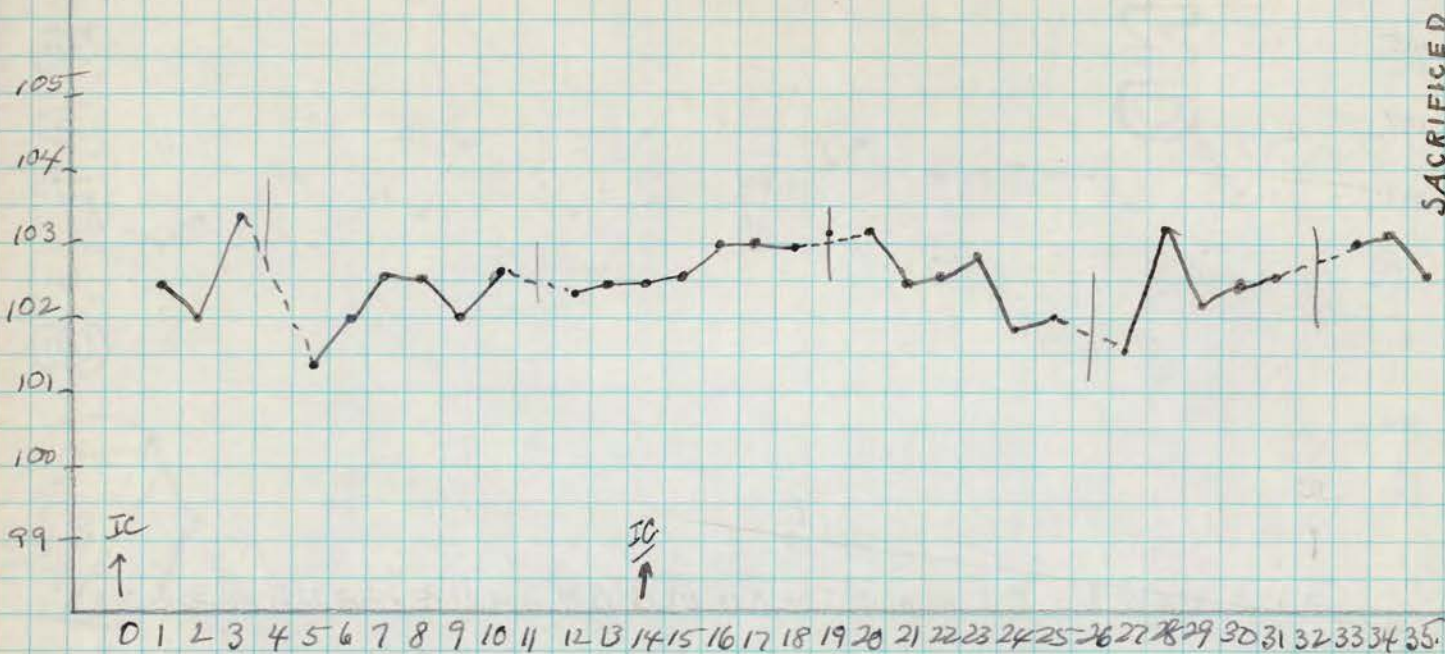
3-3-48 Inoc w.I.C. with 1.0 cc of 20% in [redacted] virus - Gen. I  
 3-10-48: Revivoc. with 1.0 cc of 20% in saline, [redacted] virus - Gen. I  
 4-2-48: Sacrificed: (chloroform-earsanguination) Autopsy: No gross les.  
TISSUE FOR SECTION: Hypothalamus, thalamus, midbrain, pons,  
 medulla, and cord levels. (Z-A).



MAY 12 1948

STRAIN Generation III

Rh. #434



5-12-48. Inoc. IC with 1.0 cc of 20% in saline [redacted] Virus - Gen II

5-26-48: Re-inoc " " " " " " " " " " " "

6-16-48: SACRIFICED (chloroform - exsanguination)

AUTOPSY: No gross obs.

TISSUE FOR SECTION: Single segments of lumbar, thoracic and cervical cord; medulla, midbrain & thalamus m. (2 A)

HISTOLOGY: Above segments show no pathological changes!

DIAGNOSIS: NO POLIO.

POLIO - 1947. - MONKEY HISTOLOGY.

<u>M.K. #.</u>	<u>Lumbor.</u>	<u>Thoraci-</u>	<u>Cervical.</u>	<u>Medulla.</u>	<u>Midbrain.</u>	<u>Thalamus.</u>	<u>Hypothal.</u>	<u>Opt. Bulb.</u>	<u>Dienceph.</u>
Rh. 11	NH; PH.	NH.	NH; PH.	NH	-	NH; PH.	-	-	POLLO
Rh. 818	NH; PH.	NH; PH.	NH; PH.	NH; PH.	-	NH; PH.	-	NH; NH.	POLLO
Rh. 157	NH, P +	-	NH; PH.	-	-	-	-	-	POLLO, <sup>eye</sup>
Rh. 158	{ PH; R.P. } Neuronal reaction; glial reaction.	{ PH } glial neuro-	{ PH; PH. } neuroglial reaction.	{ PH } neuroglial reaction.	{ PH }	{ PH } neuroglial reaction.	{ PH } neuroglial reaction.	{ PH } neuroglial reaction.	{ PH } neuroglial reaction.

PRIMARY ISOLATION.

Generation II

Generation III

Rh. 433  
Rh. 434