

HETEROD

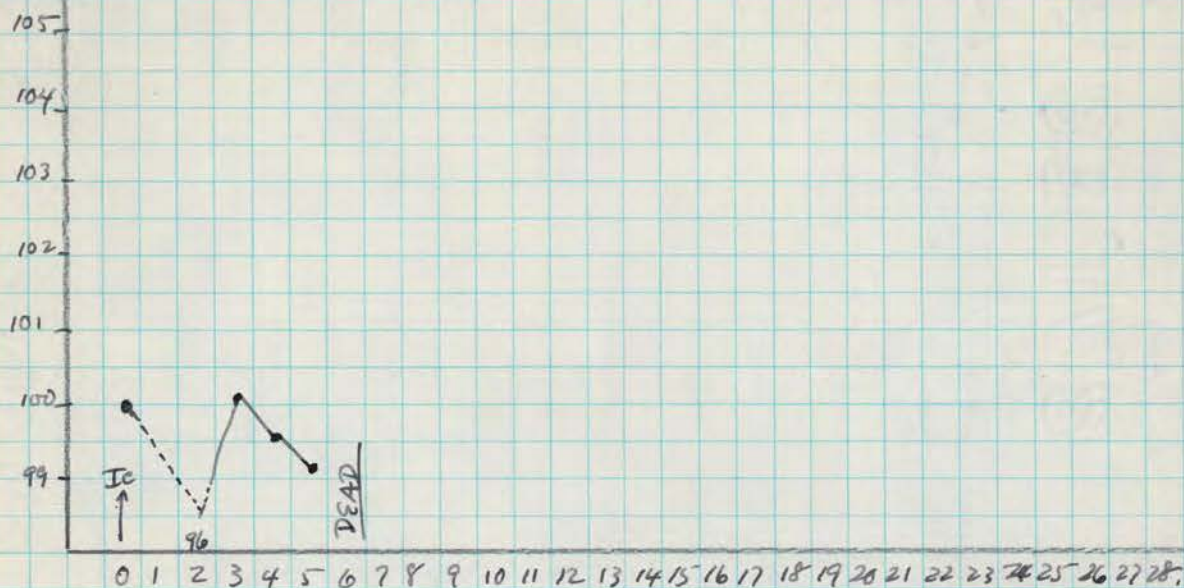
OCT 2 1948 Heterologous Challenge of Polio Convalescent Monkey

Ph. 482-

convalescent

challenged with

virul.



OCT 2 1948 - Challenged by i.c. i.v. of 0.5 cc of 1:200 [redacted] strain polio (Gen II),
(Simultaneous control is Ph. 778X - OBSLEAF).

CLINICAL CONDITION AT CHALLENGE: Both lowers almost completely paralyzed a little less marked on right, with severe atrophy L > R. Uppers are not at all paralyzed but are quite atrophic. Back muscles atrophic, hence monkey is very thin, but gets around by use of uppers. Head and neck OK.

DEAD 10-8-48 (6 days) - Autopsy: Emaciated; marked muscular atrophy; no gross l.c.

TISSUES: Thalamus; midbrain; 3 Medulla; 8 Cervical; 7 Thoracic; 5 Lumbar (2A)

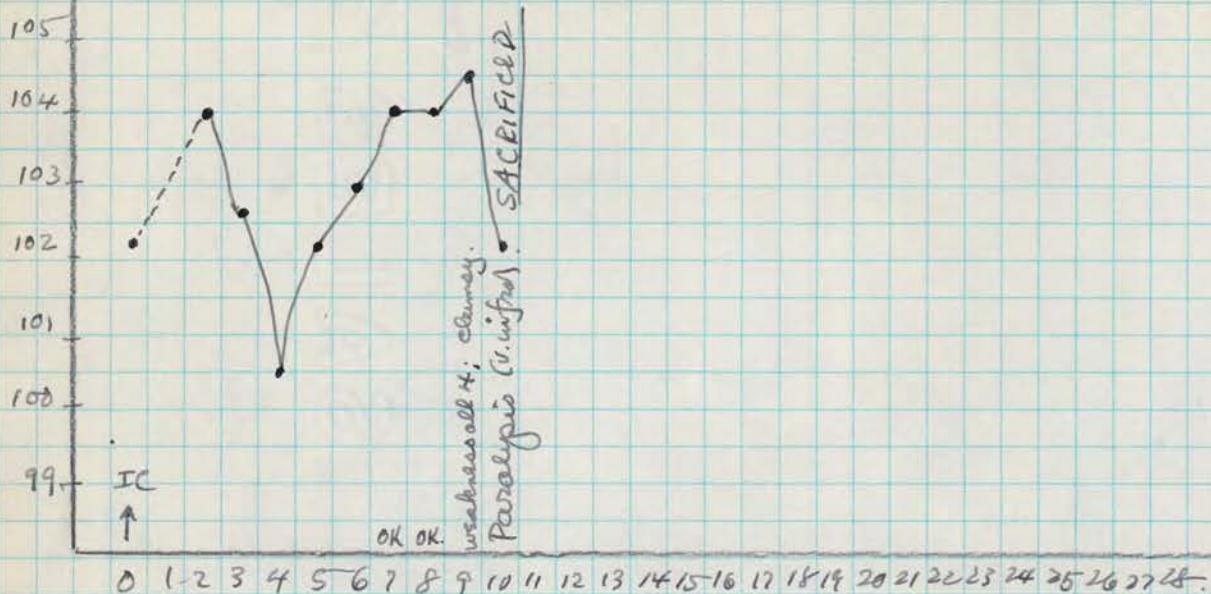
HISTOLOGY: Spinal cord segments show neuronal overfall, root degeneration and mild PV infiltration. Three cross of medulla show PV cuffing and much glial, interstitial infiltration. Midbrain and Thalamus show ext. glial infiltration and PV cuffing.

DIAGNOSIS: POLIO ("old")

OCT 2 1948

Control Mockley - [redacted] virus - used for Histology
Challenge of [redacted] virus - Ph. # 482 (overleaf).

Ph. 778 X (Ex-Tenant g.v.)



OCT 2 1948 Inoc. IC with 0.5 cc 1:200 [redacted] strain folio (Gen II) at same time as Ph. 482 (overleaf).

10-11-48 T=104°. Weakness all 4 Extremities - clumsy.

10-12-48 Partial paralysis all 4 extr. weak neck. back: worse. Sacrificed (chloroform - exsanguination). Autopsy: no gross lcs.

TISSUES: segments of lumbar and cervical cord (2-A).

11-19-48 tissues discarded